

UPS  
Division

# The availability of high quality energy



Switch to *Green Power* energy

 **socomec**  
Innovative Power Solutions **UPS**

# An independent manufacturer the benefit of a specialist

Created in 1922, SOCOMEC is an industrial group with a workforce of 2000 people. Our vocation: the control and protection of your low voltage electrical networks. Our independence allows us to have long-term vision and complete control of any decisions affecting our development.

## Two specialist industrial Divisions

Focusing on target customers and applications, our organisation is split into two separate manufacturing Divisions: SOCOMEC SCP, expert in protection and switching solutions and SOCOMEC UPS, the secure power supply specialists.

## A worldwide presence

With a strong international presence, including bases in more than 70 countries, 17 of which are subsidiaries, the SOCOMEC group is a major player in the global low voltage power distribution market.

## A flexible manufacturing structure

Built on two European centres of excellence (France and Italy), the Group benefits from competitive production sites (Tunisia) and those located in the major emerging markets (India and China). A new European distribution centre, located in France, is indicative of our determination to control its logistics chain so as to respond to the need for a reduced lead-time.



SITE 149 A A

## Direct contact

Our specialists work directly with customers. Their attentiveness and advice actively contribute to an optimised definition of requirements and to ensure that all engagements undertaken are fulfilled. Their technical knowledge, and ability to adapt and to get involved give the SOCOMEC Group its distinctive approach and are the power behind its efficiency.

## Continuing innovation

By reinvesting more than 10 % of its sales in R&D, SOCOMEC is providing the means behind its ambition: to always be at the cutting-edge of technology. This drive to be innovative has nothing to do with luck. It impacts on the company's continuing profitability and its ability to stand apart from other market players, as well as meeting our customers' expectations and constraints.

## Human values

SOCOMECC is a company open to all cultures and fosters a respectful approach to individuals. It also encourages initiative and commitment from personnel by favouring "contract based" working relationships.

## Durable and stable development

As part of its determination to have lasting and stable development the SOCOMEC Group subscribes to the "Global Compact", the UN international agreement that covers the social and environmental impacts of globalisation. As firm believers in corporate social responsibility we are determined to maintain jobs in our historic European production sites. As job-creators in emerging countries we are actively contributing to our social and economic development in full respect of human and labour rights and the environment.



# For a high quality power supply innovative power solutions

Marketed under the SOCOMEC UPS trademark, our range of products and services fulfils all needs for a high quality, continuous electrical power supply. Our UPS, as well as our secure power supplies, static transfer systems, harmonic equalizers, rectifiers and DC/AC and AC/DC converters, comprise the most complete ranges in the world and cover a very wide range of applications for every sector of the market.

## A key requirement

High quality energy supply at any moment is vital in many fields such as telecommunications, data processing or certain industrial processes. It is even mission-critical for many medical applications. In all these sectors SOCOMEC UPS has over 40 years of experience at your disposal.

## Product solutions that meet requirements

Underpinned by significant R&D resources, our product offer continually evolves as a consequence of our contact with customers. Our products have the approval of some of the most stringently demanding users: Telecom companies worldwide, Ministries of Defence, nuclear industry operators...

## Recognised expertise

After receiving the award for "Excellence in Customer service" from Frost & Sullivan, SOCOMEC UPS has once again excelled by winning the "Innovative Product award 2006". The award was given in recognition of our company's dedication to integrating innovative technologies and applications in new products.

## Continuing innovation

The facts speak for themselves : first French manufacturer to offer static power supplies (1968), designer of the first UPS with PWM technology (1980), first to integrate IGBT technology into major power sources (1996), designer of the first UPS in a modular rack system (2000), first to integrate hybrid components (2001), first 200 kVA UPS with IGBT rectifier (2003), new battery charging design (2004), dynamic energy storage system (flywheel) replacing the more traditional battery-based solution (2006)...

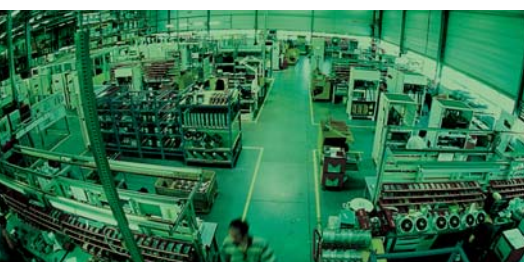
## Always focused on customer needs

Our sales and after-sales network means we are always there for you. Our partner-customers recognise the quality of our products, our availability, our flexibility in meeting requirements and commitment.

## An organisation "hard-wired" for customer satisfaction

Design and production in each UPS factory is certified to ISO 9001. Together with quality service and maintenance, the UPS are your guarantee of a fail-safe electrical power supply.

- > Uninterruptible Power Supplies
- > Central power Supply Systems
- > Modular solutions
- > Rectifiers and inverters
- > Harmonic compensators
- > Static Transfer Systems



# Excellent growth sustained returns

Showing double digit growth for the second year running, the Socomec Group has, for the first time in its history, produced a consolidated turnover in excess of 300 million Euros.

## Balanced development

This growth is evenly distributed across our two divisions, Switching & Protection and UPS, thanks largely to the maturity of our commercial activities in Europe and the strong growth in Asia from which we are reaping the benefits due to our long-term presence. The company's development is accompanied by operating profits comparable to those of the previous year, almost 11 % of sales. This figure includes a marked increase in our R&D investments destined to renew all our product ranges. It also includes the costs linked to our new commercial and industrial ventures in Europe and Asia.

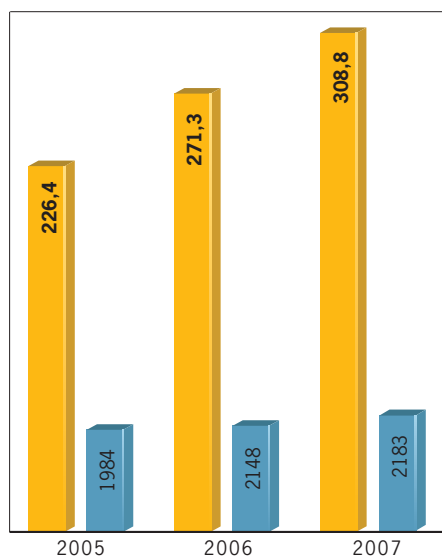
While the group's level of consolidated debt has increased in comparison to that of the previous financial year, it remains largely compatible with our annual capacity for repayment, without impeding our development. Our debt ratio is well within the average for companies in our sector.

## Favourable outlook for 2008

In the context of a global situation requiring prudence, the Socomec Group is looking healthy and its store of reserves allows it to look to the future with confidence and ambition.

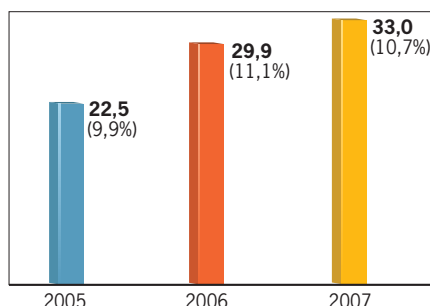
## A healthy financial situation

The group's high level of operating profits allowed a capital restructuring in the middle of the year, which, by concentrating the capital around the founder's family, reinforces the group's independence. Our good results have allowed us to compensate for the financial costs incurred by this capital restructuring.

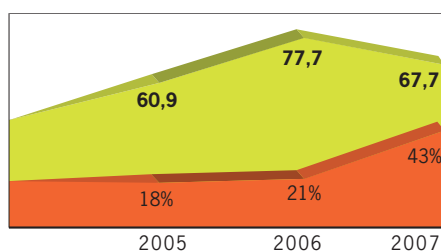


### Sales figures

- Sales figures (M€)
- Employees

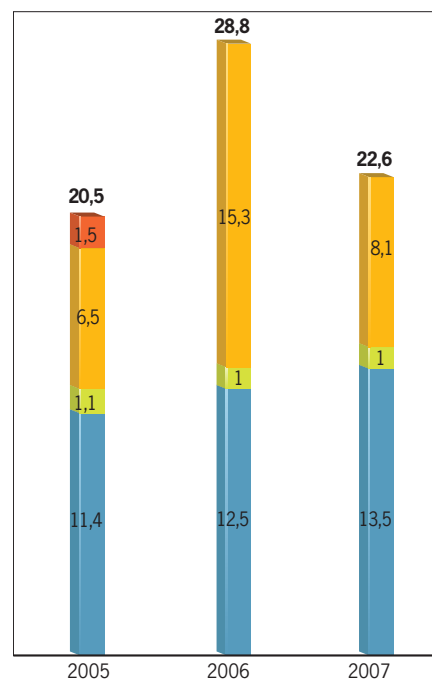


### Operating result (EBIT) (M€) (% of turn-over)



### Financing of the company (M€)

- Shareholders' equity (M€)
- % of debt on shareholders' equity



### Future investments (M€)

- R&D
- training
- material investment
- other



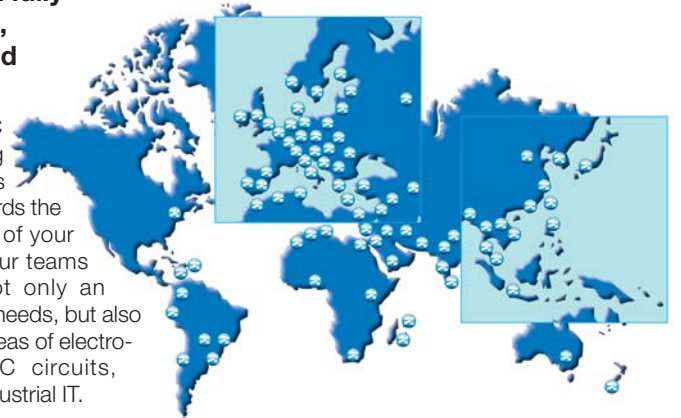
# Commissioning Inspection and Maintenance the manufacturer's guarantee

Given the impact on the availability of your electrical energy, the quality of the service is just as important as the quality of the product. As a designer, manufacturer and service provider, SOCOMEC UPS offers you specialist knowledge of your operating environment that allows absolutely no interruption of power supply.

Our maintenance engineers are there for all your requirements in terms of commissioning, servicing and technical support.

## The expertise of a fully integrated design, manufacturing and service supplier

Since 1968, SOCOMEC has been developing solutions and services which are geared towards the quality and continuity of your high quality energy. Our teams provide you with not only an understanding of your needs, but also their expertise in the areas of electronic components, DC circuits, operating logic and industrial IT.



CARTE 018 E

## A reassuring proximity

Our European and worldwide presence ensures that you will always have specialists close to your site, for a fast and efficient response.

## Specialists at your service

More than 200 maintenance engineers and technicians are available to you for:

- installing and commissioning of equipment,
- preventive maintenance,
- remedial maintenance
- 24-hour availability,
- consultancy, design and implementation of installation modifications and updates.

## Services on request

We offer you a wide range of complementary services, in addition to your contractual benefits, that respond to your evolving requirements throughout your installation's service life :

- replacing worn parts (battery, fans, capacitors),
- moving your equipment,
- industrial emission control,
- UPS leasing,
- implementing ready-to-run installations,
- supplying communication software,
- training users.

## Respect for your environment

As an environmentally-aware manufacturer we actively participate in the development of legislation and standards. This guarantees that we will always respond to the demands of legislation concerning the disposal of used components and respect recycling procedures.



APPLI 142A



# NeTYS PL

Your protection for

- > PC: LCD or CRT monitors, scanners, printers, etc.
- > Cash registers
- > Interactive terminals

Models	<b>550</b>	<b>750</b>
VA	550	750
W	330	450
Input / output: 1/1	●	●



# NeTYS PE

Your protection for

- > CAD, graphic workstations
- > Multimedia workstations and peripherals
- > LCD or CRT monitors

Models	<b>400</b>	<b>600</b>	<b>800</b>	<b>1000</b>
VA	400	600	800	1000
W	240	360	480	600
Input / output: 1/1	●	●	●	●



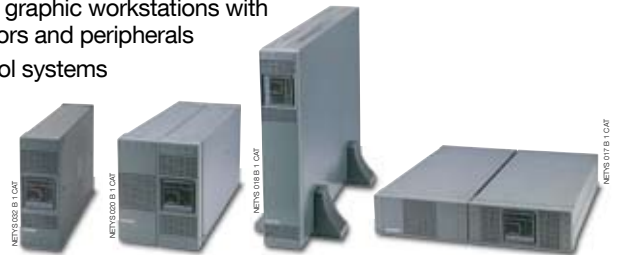
NeTYS PE 400 / 600 / 800 VA      NeTYS PE 1 000 VA

# NeTYS PR

Your protection for

- > Professional and IT equipment
- > Servers and Networking devices
- > CAD / graphic workstations with monitors and peripherals
- > Control systems

Models	<b>1000</b>	<b>1500</b>	<b>2000</b>	<b>3000</b>
VA	1000	1500	2000	3000
W	700	1000	1340	2100
Input / output: 1/1	●	●	●	●



NeTYS PR 1 000 VA      NeTYS PR 1 500 / 2 000 VA      NeTYS PR 3 000 VA      NeTYS PR 1 500 / 2 000 VA Rack

# NeTYS RT

Your protection for

- > Switching
- > Storage
- > Servers and networking devices
- > VoIP communication systems
- > Structured cabling systems
- > Control systems
- > Video surveillance systems

Models	<b>1100</b>	<b>1700</b>	<b>2200</b>	<b>3000</b>	<b>5000</b>	<b>7000</b>	<b>9000</b>	<b>11000</b>
VA	1100	1700	2200	3000	5000	7000	9000	11000
W	800	1200	1600	2100	3500	4900	6400	8000
Input / output: 1/1	●	●	●	●	●	●	●	●

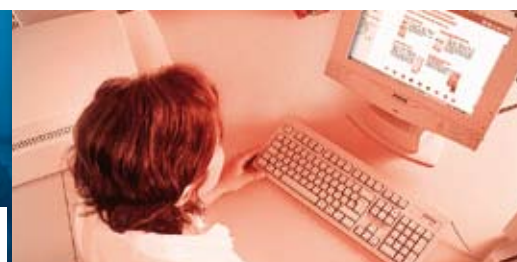


# ITYS

Your protection for

- > Professional workstations
- > Server and corporate networks
- > Storage systems
- > Industrial automation
- > Security systems
- > Telecom systems

Models	<b>1000</b>	<b>2000</b>	<b>3000</b>	<b>6000</b>	<b>10000</b>
LB Models			<b>3000</b>	<b>6000</b>	<b>10000</b>
VA	1000	2000	3000	6000	10000
W	700	1400	2100	4200	7000
Input / output: 1/1	●	●	●	●	●



# MODULYS RM

Your protection for

- > Computer networks
- > Telecommunications
- > LAN/WAN networks

Models	315	330
VA	1500	3000
W	1050	2100
Input / output: 1/1	●	●



# MODULYS MC

Your protection for

- > Information processing centres
- > Telecommunications
- > Medical

Models	415	430	645	660
VA	1500	3000	4500	6000
W	1050	2100	3150	4200
Input / output: 1/1	●	●	●	●



# MODULYS EB

Your protection for

- > e.business
- > Server farms
- > Telecommunications
- > Medical

Models	1290	1212
VA	4500	6000
W	3150	4200
Input / output: 1/1	●	●



# MODULYS TC

Your protection for

- > e.business
- > Computer networks
- > Telecommunications

Models	230	245	260	360	390
VA	3000	4500	6000	6000	9000
W	2100	3150	4200	4200	6300
Input / output: 1/1	●	●	●	●	●
Input / output: 1/3		●	●	●	●



# MASTERYS BC

Your protection for

- > Industrial networks
- > Servers
- > Telecommunications
- > Medical and laboratories

Models	8	10	12	15	20	30	40
kVA	8	10	12	15	20	30	40
kW	5.6	7	8.4	12	16	24	32
Input / output: 1/1	●	●					
Input / output: 3/1	●	●	●	●	●		
Input / output: 3/3		●	●	●	●	●	●



# MASTERYS MC

- Your protection for
- > Industrial networks
  - > Servers
  - > Telecommunications
  - > Medical and laboratories



MASTERYS MC  
from 60 to 80 kVA

MASTERYS MC  
from 100 to 120 kVA

Models	60	80	100	120
VA	60	80	100	120
W	48	64	90	108
Input / output: 3/3	●	●	●	●

# MASTERYS IP Green Power

- Your protection for
- > Data centers
  - > Telecommunications
  - > Service Sector



MASTERYS IP GREEN POWER

Models	10	15	20	30	40
kVA	10	15	20	30	40
kW	8	12	16	24	32
Input / output: 3/1	●	●	●		
Input / output: 3/3	●	●	●	●	●

# MASTERYS EB

- Your protection for
- > Datacentres
  - > e.business
  - > Medical



MASTERYS EB

Models	330	345	360	390
VA	2 x 15	3 x 15	2 x 30	3 x 30
W	2 x 12	3 x 12	2 x 24	3 x 24
Input / output: 3/3	●	●	●	●

# Green Power

- Your protection for
- > Datacentres
  - > Telecommunications
  - > Service sector
  - > IT-Networks/  
Infrastructures



GREEN POWER

Green Power  
from 10 to 40 kVA

GREEN POWER

Green Power  
from 100 to 200 kVA

Models	10	15	20	30	40	100	120	160	200
kVA	10	15	20	30	40	100	120	160	200
kW	8	12	16	24	32	90	108	144	180
Input / output: 3/1	●	●	●	●	●				
Input / output: 3/3	●	●	●	●	●	●	●	●	●

# DELPHYS DS

- Your protection for
- > Petrochemicals industry
  - > Industry
  - > Service industries



DELPHYS DS

Models	20	30	40	60
kVA	20	30	40	60
kW	16	24	32	48
Input / output: 3/1	●	●	●	●
Input / output: 3/3	●	●	●	●





# DELPHYS MP elite

Your protection for

- > Data centre
- > Industry
- > Telecommunications
- > Processes

Models	60	80	100	120	160	200
kVA	60	80	100	120	160	200
kW	48	64	80	96	128	160
Input / output: 3/3	●	●	●	●	●	●



# DELPHYS MX

Your protection for

- > Data centre
- > Industry
- > Telecommunications
- > Processes

Models	250	300	400	500
kVA	250	300	400	500
kW	200	240	320	400
Input / output: 3/3	●	●	●	●



# DELPHYS DS

Your protection for

- > Data centre
- > Industry
- > Telecommunications
- > Processes

Models	600	800
kVA	600	800
kW	480	640
Input / output: 3/3	●	●



# CPSS EMergency

Your protection for

- > Services buildings
- > Industrial sites
- > Businesses
- > Museums, hospitals

Models	MOD EL 130	MOD EL 145	MOD EL 100
kVA	3	4.5	6
kW	2.1	3.15	4.2
Input / output: 1/1	●	●	●



Models	EL 110	EL 115	EL 120	EL 310	EL 315	EL 320	EL 330	EL 340	EL 360	EL 380
kVA	10	15	20	10	15	20	30	40	60	80
kW	9	13.5	18	9	13.5	18	27	36	48	64
Input / output: 3/1	●	●	●							
Input / output: 3/3				●	●	●	●	●	●	●



Models	DEL EL 100	DEL EL 120	DEL EL 160	DEL EL 200
kVA	100	120	160	200
kW	80	96	128	160
Input / output: 3/3	●	●	●	●



# VSS<sup>+</sup>DC

from 60 to 500 kVA

- Your protection for
- > Data center
  - > Service sectors
  - > Industry
  - > Telecommunications
  - > Medical applications

## Dynamic Energy Storage System

Green alternative to batteries  
up to 190 kW for 12.5 seconds



# STATYS

- Your protection for
- > Finance, Banking and Insurance
  - > Healthcare sector
  - > Telecom & Broadcasting
  - > Industry
  - > Power generation plants
  - > Transport

Models (19" rack)	32	63	100
A	32	63	100
Single-phase voltage	●	●	
Three-phase voltage		●	●

Models (cabinet)	200	300	400	600	800	1200	1500	1800
A	200	300	400	600	800	1200	1500	1800
Three-phase voltage	●	●	●	●	●	●	●	●
Cabinet	●	●	●	●	●	●	●	●
Integrable	●	●	●	●	●	●	●	●



# IT SWITCH

- Your protection for
- > Data centre
  - > Processes
  - > Telecommunications
  - > Air traffic control

Models (19" rack)	16	20	32	40
A	16	20	32	40
Single-phase voltage	●	●	●	●



# LTM

- Your protection for
- > Data centre
  - > Industry
  - > Telecommunications
  - > Medical

Models	2000	2400	2500	2600	3000	3500	4000	4200	4500	4800
A	2000	2400	2500	2600	3000	3500	4000	4200	4500	4800
Three-phase voltage	●	●	●	●	●	●	●	●	●	●
Cabinet	●	●	●	●	●	●	●	●	●	●
Integrable	●	●	●	●	●	●	●	●	●	●



# ATRYs

- Your protection for
- > Service industries
  - > Telecommunications
  - > Businesses

Models	15 A	27 A	54 A	82 A	180 A	240 A
kVA	15	30	60	90	200	280
Input / output: 3/3	●	●	●	●	●	●



# SHARYS IP Enclosure

Your protection for

- > Process industry
- > Heavy industry
- > Contactors



Models	ENCLOSURE ES - SINGLE MODULE						ENCLOSURE ED - DOUBLE MODULE					
Input voltage	230 V						230 V					
Output voltage	24	48	108	120	24	48	108	120	24	48	108	120
Nominal output current (A)	50	15	30	50	20	20	100	30	60	100	40	40

# SHARYS IP System

Your protection for

- > Process industry
- > Heavy industry
- > Drives



Models	SYSTEM IS - 4 MODULES				SYSTEM IX - 3 MODULES WITH TX			
Input voltage (V)	230 V - 400 V				400 V			
Output voltage (V)	24	48	108	120	24	48	108	120
Nominal output current (A)	200	200	80	80	150	150	60	60

# SHARYS MICRO and MINI

Your protection for

- > Data networking
- > Transmission systems
- > Telecommunications
- > Industries



Models	SHARYS 400	SHARYS 800	SHARYS 1600	SHARYS 2700
Input voltage (V AC)	230	230	230	230
Output voltage (V DC)	48	48	48	48
Nominal output current (A)	7.5	15	30	50

# SHARYS ELITE

Your protection for

- > Telecommunications Centres
- > Internet Service Providers
- > Data networking
- > Industries



Models	SHARYS 400	SHARYS 800	SHARYS 1600	SHARYS 2700
Input voltage (V AC)	230	230	230	230
Output voltage (V DC)	48	48	48	48
Nominal output current (A)	7.5	15	30	50

# PHASYS S.A. and PHASYS ELITE

Your protection for

- > Modem, PC, router
- > Fibre optic systems
- > New energy sources : wind and solar



Models	1500	3000	4500
Input voltage (V DC)	48	48	48
Output voltage (V AC)	230	230	230



PHASYS from 1 500 to 4 500 VA



PHASYS ELITE from 1.5 to 18 kVA



# Socomec UPS worldwide

## IN EUROPE

### BELGIUM

Schaatsstraat, 30 rue du Patinage  
B - 1190 Bruxelles  
Tel. +32 (0)2 340 02 34  
Fax +32 (0)2 346 16 69  
be.ups.sales@socomec.com

### FRANCE

95, rue Pierre Grange  
F - 94132 Fontenay-sous-Bois Cedex  
Tel. +33 (0)1 45 14 63 90  
Fax +33 (0)1 48 77 31 12  
ups.paris.dcm@socomec.com

### GERMANY

Heppenheimerstraße 57  
D - 68309 Mannheim  
Tel. +49 (0) 621 71 68 40  
Fax +49 (0) 621 71 68 44 4  
de.ups.all@socomec.com

### ITALY

Via Leone Tolstoj, 73 - Zivido  
20098 San Giuliano Milanese (MI)  
Tel. +39 02 98 242 942  
Fax +39 02 98 240 723  
siconmi@socomec.com

### NETHERLANDS

Bergveste 2F  
NL - 3992DE Houten  
Tel. +31 (0)30 63 71 504  
Fax +31 (0)30 63 72 166  
info@socomec.nl

### POLAND

Nowowiejska St 21/25  
00-665 Warszawa  
Tel. +48 (0)22 2345 223  
Fax +48 (0)22 2345 223  
ups.poland@socomec.com

### PORTUGAL

Rua Moinho do Cuco  
Bloco A  
Lj. Dta. - Paz  
2640-566 MAFRA  
Tel. +351 261 812 599  
Fax +351 261 812 570  
portugal@socomec.com

### RUSSIA

Kutuzovsky pr. 13, 44-45  
121248 - Moscow  
Tel. +7 495 775 19 85  
Fax +7 495 775 19 85  
ups.russia@socomec.com

### SLOVENIA

Savlje 89  
SI - 1000 Ljubljana  
Tel. +386 1 5807 860  
Fax +386 1 5611 173  
si.ups.info@socomec.com

### SPAIN

C/Nord, 22 Pol. Ind. Buvisa  
E - 08329 Teià (Barcelona)  
Tel. +34 935 407 575  
Fax +34 935 407 576  
info@socomec-aron.com

### UNITED KINGDOM

Units 7-9 Lakeside Business Park  
Broadway Lane - South Cerney  
Cirencester - GL7 5XL  
Tel. +44 (0)1285 863300  
Fax +44 (0)1285 862304  
uk.ups.sales@socomec.com

## IN ASIA

### CHINA

Universal Business Park  
B33, 3rd Fl, 10 Jiuxiangqiao Rd.,  
Chaoyang, Beijing 100016 P.R., China  
Tel. +86 10 59756108  
Fax. +86 10 59756109  
socomec@socomec.com.cn

### INDIA

B1, 11nd Floor, Thiru-Vi-Ka-Industrial Estate  
Guindy  
Chennai - 600 032  
Tel. +91 44 3921 5400  
Fax +91 44 3921 5450 - 51  
sales@socomec-ups.co.in

### MALAYSIA

31 Jalan SS 25/41 - Mayang Industrial Park  
47301 Petaling Jaya - Selangor, Malaysia  
Tel. +603 7804 1153  
Fax +603 7803 8901  
sales@cspm.com.my

### SINGAPORE

31 Ubi Road 1, Aztech Building  
# 01-00 (Annex) - SG - Singapore 408694  
Tel. +65 6745 7555  
Fax +65 6458 7377  
sg.ups.sales@socomec.com

### THAILAND

No.9 Soi Vibhavadirangsit 42  
Vibhavadirangsit Rd, Ladyao  
Chatujak Bangkok 10900  
Tel. +66 2 941-1644-7  
Fax. +66 2 941-1650  
info@socomec-th.com

### VIETNAM

539/23 Luy Ban Bich St.,  
Phu Thanh Ward, Tan Phu Dist  
Ho Chi Minh City  
Tel. +84-839734.990  
Fax +84-839735.088  
info@socomec-vn.com

## HEAD OFFICE

### SOCOMECS GROUP

S.A. SOCOMECS capital 11 302 300 € - R.C.S. Strasbourg B 548 500 149  
B.P. 60010 - 1, rue de Westhouse - F-67235 Benfeld Cedex

### SOCOMECS UPS Strasbourg

11, route de Strasbourg - B.P. 10050 - F-67235 Huttenheim Cedex- FRANCE  
Tel. +33 (0)3 88 57 45 45 - Fax +33 (0)3 88 74 07 90  
ups.benfeld.admin@socomec.com

### SOCOMECS UPS Isola Vicentina

Via Sila, 1/3 - I - 36033 Isola Vicentina (VI) - ITALY  
Tel. +39 0444 598611 - Fax +39 0444 598622  
info.it.ups@socomec.com

## SALES, MARKETING AND SERVICE MANAGEMENT

### SOCOMECS UPS Paris

95, rue Pierre Grange  
F-94132 Fontenay-sous-Bois Cedex - FRANCE  
Tel. +33 (0)1 45 14 63 90 - Fax +33 (0)1 48 77 31 12  
ups.paris.dcm@socomec.com

[www.socomec.com](http://www.socomec.com)

Non contractual document. © 2009, Socomec SA. All rights reserved.



  
Innovative Power Solutions UPS