

SECURING WHAT MATTERS
**SUSTAINABLE
DEVELOPMENT**



4 elements of sustainable development:



The Betafence tagline says it all:
Securing What Matters

In these often troubled times, the **need to feel safe** has become fundamental and people wish to protect what they cherish.

While respecting the **desire for freedom**, we offer the **protection** of everything that people **value**.

- › Product
- › Production
- › Environment
- › People



Environmental responsibility

An important aspect of Securing What Matters is being **environmentally responsible** in the products we manufacture, and the processes we use in production.

Betafence today is the world leader in physical perimeter fencing systems, access control and detection systems. It has been producing and exporting uniqueness and innovation throughout the world for more than 135 years, guaranteeing the highest standards of product & project quality.

We aim to use the **best technologies** available to guarantee a sustainable development. From emission control to lowering our energy, water and gas consumption and managing our waste, we monitor all production processes with **care, transparency and reliability**.

Table of Contents

1. Product	4
2. Production	5
3. Environment	6
4. People	7

1. Product



Durable products, the start for a sustainable development

Betafence integrates **environmental criteria** in **design & manufacturing** of product
Betafence continuously puts efforts in **improving** the processing efficiency and **reducing** the number of steps in the production process as much as feasible.

Long product lifespan

The **lifetime** of the product is a very **important** aspect in the environmental assessment of products. It should be clear that the **lifetime** of Betafence **plastic** coated products is considerably **higher** than the lifetime of galvanised products without plastic coating. The longer lifetime of Betafence plastic coated products is guaranteed by careful selection of the plastics based on their UV resistance and on their adhesion performance and by **state of the art coating technology** combined with stringent process control.

At the end of its lifetime, the Betafence products can be **recycled** through steel recycling processes. Therefore we can **guarantee** a **lower amount of waste material**.

Environmental aspects of Betafence plastic coated products

With regard to raw materials for plastics coatings, Betafence guarantees that only “green” plastic coatings are used which **do not contain harmful or toxic compounds** such as:

- lead
- cadmium
- hexavalent chromium
- toxic plasticisers



2. Production

Continuous efforts to lower the energy consumption

Reduction of energy consumption in our production processes

We put a lot of efforts in **reducing** our **energy consumption** in all our plants by analyzing, **improving** and using **energy friendly** lighting, as much as possible. We aim to **reduce our energy waste** to an absolute minimum with the automatisations of different energy consuming processes and the **insulation** of heat losing processes.

Reduction of CO² emission

Betafence continuously makes **efforts to lower** the CO₂ emission. Compared to 2010, the emission of CO₂ is **reduced** by 50%, this equals the CO₂ emission of 4000 families (gas & electricity) or the CO₂ emission of a car after 300 000 000 km.

Heat recuperation

Another example of **heat recuperation** in our Zwevegem plant is where the hot flue gasses from the drying oven are used to heat the water.

Efficient use of raw materials & natural resources

All Betafence steel fences, posts, rails and security mesh panels are manufactured using **recycled content material**. The steel we use in our production originates steel processes which incorporate **recycled raw material**. The result is steel components utilizing **between 20% and 95% recycled content material**, depending on the product.

LED technology

Use of **LED technology** for lighting of the warehouse & production plant.

Modern heating technology

Replacement of the steam heating by more **energy efficient heating technologies** for processes, as well as heating of the production buildings.



3. Environment

Water, a valuable component in our production process

Locally and globally, the **importance of water** as a resource for agriculture, manufacturing and sustaining life has become a prominent issue. Betafence considers water as a **valuable component** for its production process and **limits** its water **consumption** as much as possible.

Green power & alternative energy

In 2011 **photovoltaic cells** were installed on Betafence distribution Centre in Belgium and later also in our plant in Tortoreto, Italy. The photovoltaic cells deliver a power of 2,3 MWp and yearly 2GWh of **green power**, this equals the energy consumption of 600 families. Thanks to this we avoid a CO₂ emission of 3.150 tons/year.

We also invest in reducing our paper consumption, in order to cut back our footprint on the environment

- **reduction** of paper consumption
- use of **FSC paper** for commercial documentation
- limited printout of mails
- use of **documentation** in **electronic** format
- we try to **minimise** the **packaging**/labelling of products
- we use **pallets** with the **EPAL** (European Pallet Association e.V.) recovery system



Respect of local environment

- Betafence takes its responsibility to cope with the historical pollution of its locations by the means of **soil remediation & earthworks**.
- Investment of **afterburners** on PVC coating lines in Betafence Zwevegem, Belgium (**no escape of flue gasses**)

Other initiatives to lower our energy consumption

- Policy for corporate vehicles (rgd. carbon dioxide emissions)
- Betafence encourages its employees to **come to work by bike**. Personalized Betafence bikes are available for the employees of the plant in Belgium who decide to come to work by bike.

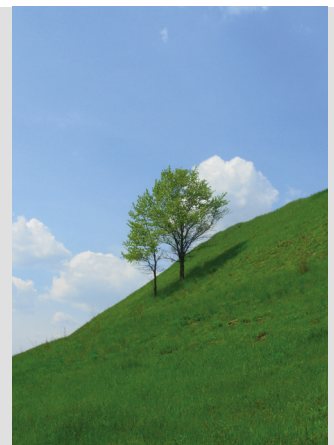
4. People

The right people with the right training

- Offer a **stimulating working environment** to our employees
- **Quality & environmental managers** in the factories and on group level
- **Train** and **stimulate** employees (stimulate employees to come with ideas to improve production process)

Certificates:

- Belgium: Charter “**Duurzaam ondernemen**” (Sustainable development):
Yearly audit by an independent external organization on the **commitment to sustainable business** regard to people, planet and profit.
- ISO 14001 Sheffield & Italy



Betafence

3Square Village | Rijvisschestraat 126

B-9052 Gent

Belgium

Tel. + 32 (0) 9 248 17 00

info@betafence.com

www.betafence.com

Betafence is world leader in physical perimeter fencing systems,
access control and detection systems.

Betafence companies and product names are trademarks owned by
Betafence Holding NV.

Modifications in assortment and products reserved.

2018