



# **POWER EDGER / TRENCHER**

## **PARTS CATALOG**

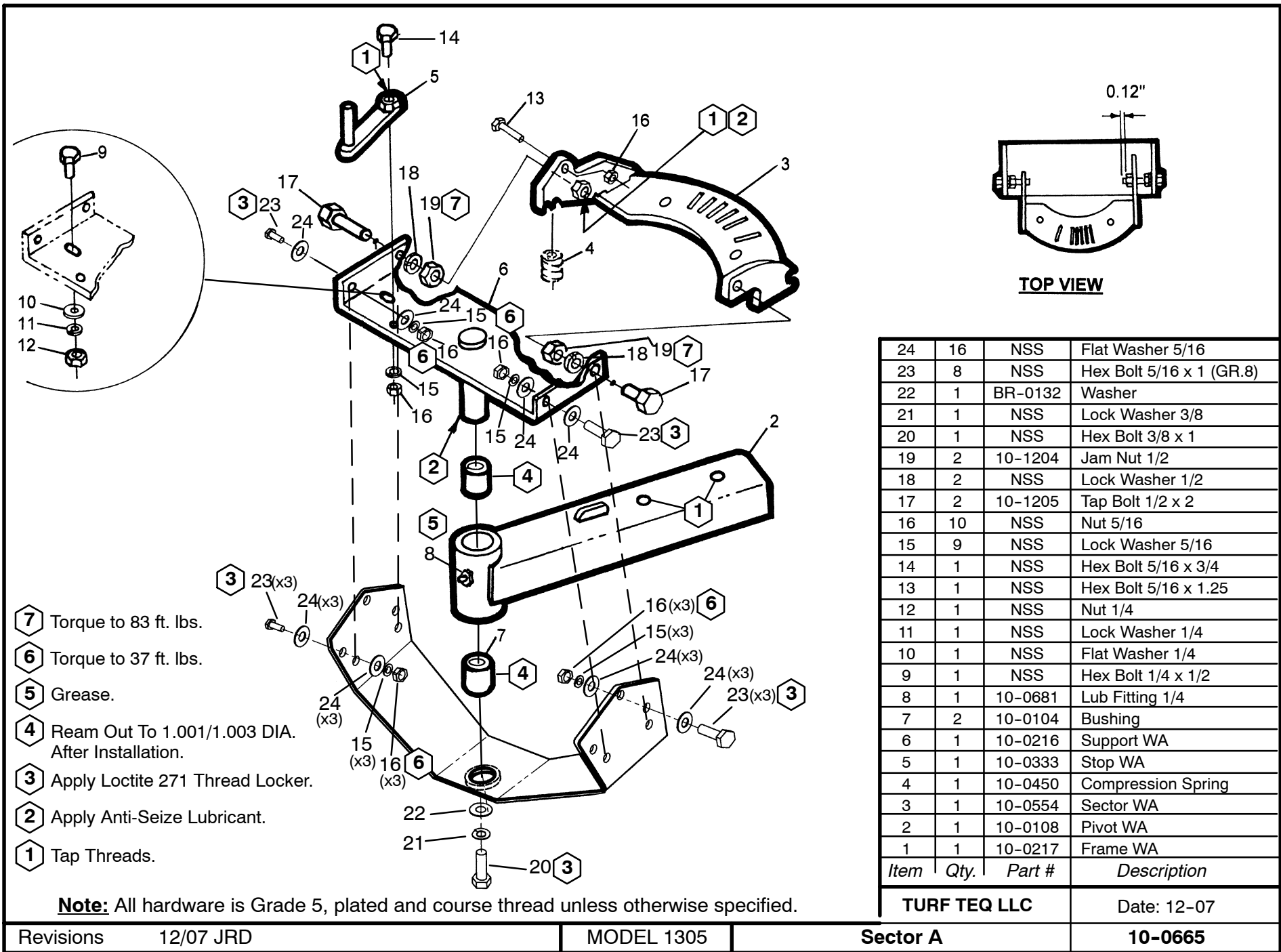
**MODEL 1305**  
**MODEL 1305SP**  
**MODEL 1305SP1**

**SERIAL NUMBER 00301 AND ABOVE**

**Turf Teq LLC**  
**PC1305SP-04-1207**

# Contents

<u>Part Number</u>	<u>Description</u>	<u>Page Number</u>
10-0665	Sector A	1
10-0667	Engine A	2
10-0668	Arm A	3
10-0669	SP Idler Arm A	4
10-0671	Cover Clamp A	5
G1/10-0672	Groomer Shield A	6
G2/10-0673	Open/Trench Shield A	7
10-0676	Gearbox A	8
10-0677	Guage Wheel A	9
10-0679	Idler Arm A	10
10-0680	Lift Arm A	11
10-0682	Hydro Handle A	12
10-0697	Super Pivot Front A	13
10-0698	Fixed Front A	14
10-0699	Opener Blade/Cover A	15
10-0700	Groomer Blade/Cover A	16
10-0935	K62 Transmission A	17
10-0939	Tractor Frame/Trans A	18
10-0940	Tractor Controls A	19
1305TR/10-0941	Tractor Only A	20
1305TR1/10-0942	Tractor with Diff-Loc A	21
A1300E/10-0943	Edger Groomer Attachment	22
A1300E1/10-0944	Edger Groomer & Op. Attachment	23
1305SP/10-0945	Super Pivot A	24
1305SP1/10-0946	Super Pivot A	25
1305/10-0947	Fixed Frame A	26
K1305PB/10-0934	Park Brake Kit A (Optional Equipment)	27
K1305WL/10-0936	Wheel-Loc Kit A (Optional Equipment)	28
K1305DL/10-0937	Differential-Loc Kit A (Optional Equipment)	29
K1305LK/10-0938	Broom/Edger Lift Kit A	30



- 7** Torque to 83 ft. lbs.
- 6** Torque to 37 ft. lbs.
- 5** Grease.
- 4** Ream Out To 1.001/1.003 DIA. After Installation.
- 3** Apply Loctite 271 Thread Locker.
- 2** Apply Anti-Seize Lubricant.
- 1** Tap Threads.

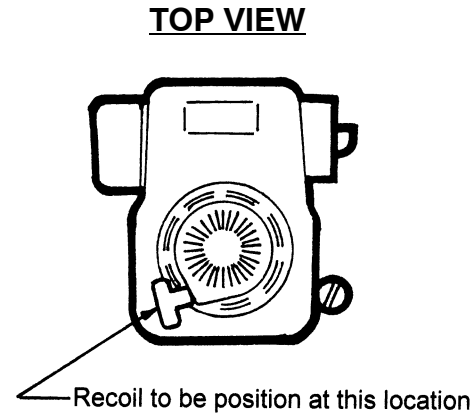
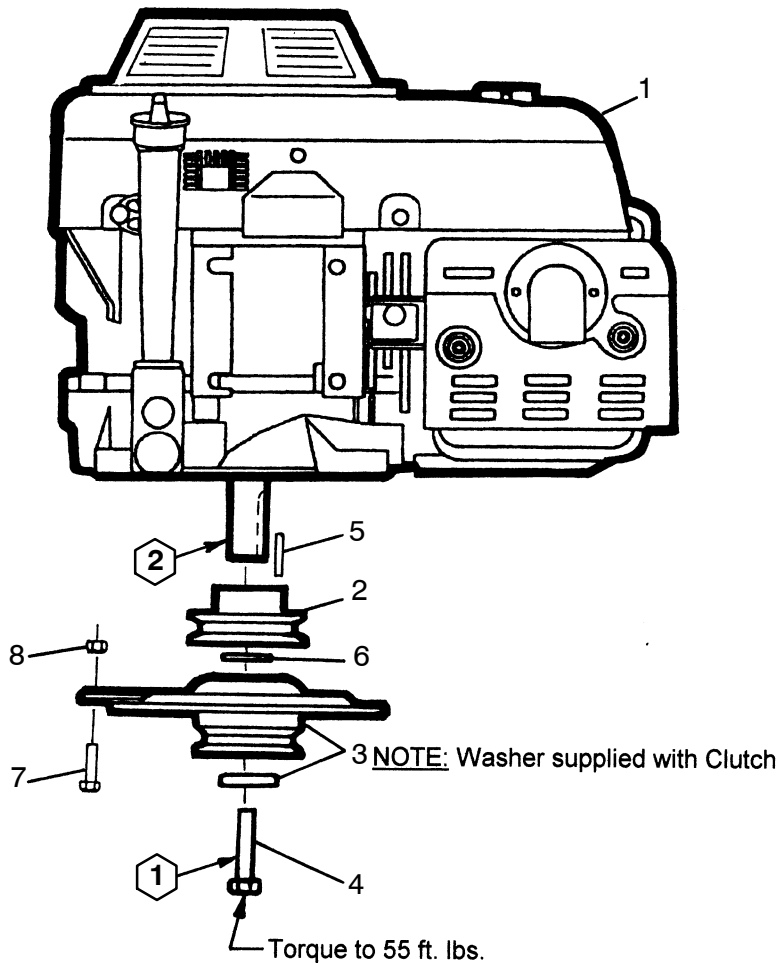
**Note:** All hardware is Grade 5, plated and course thread unless otherwise specified.

24	16	NSS	Flat Washer 5/16
23	8	NSS	Hex Bolt 5/16 x 1 (GR.8)
22	1	BR-0132	Washer
21	1	NSS	Lock Washer 3/8
20	1	NSS	Hex Bolt 3/8 x 1
19	2	10-1204	Jam Nut 1/2
18	2	NSS	Lock Washer 1/2
17	2	10-1205	Tap Bolt 1/2 x 2
16	10	NSS	Nut 5/16
15	9	NSS	Lock Washer 5/16
14	1	NSS	Hex Bolt 5/16 x 3/4
13	1	NSS	Hex Bolt 5/16 x 1.25
12	1	NSS	Nut 1/4
11	1	NSS	Lock Washer 1/4
10	1	NSS	Flat Washer 1/4
9	1	NSS	Hex Bolt 1/4 x 1/2
8	1	10-0681	Lub Fitting 1/4
7	2	10-0104	Bushing
6	1	10-0216	Support WA
5	1	10-0333	Stop WA
4	1	10-0450	Compression Spring
3	1	10-0554	Sector WA
2	1	10-0108	Pivot WA
1	1	10-0217	Frame WA
Item	Qty.	Part #	Description

<b>TURF TEQ LLC</b>		Date: 12-07
Revisions	12/07 JRD	<b>10-0665</b>

MODEL 1305

Sector A



② Apply Anti-Seize Lubricant.

① Apply Loctite 271 Threadlocker.

**Note:** All hardware is Grade 5, plated and course thread unless otherwise specified.

8	1	NSS	Nut 5/16
7	1	NSS	Hex Bolt 5/16 x 1.0
6	1	10-1110	Washer 1" Machine 1.03 x 1.5 x .07
5	1	10-1121	Keyway 1/4 x .75
4	1	10-1206	Hex Bolt .43 x 2.50 (Gr.8) Fine Thread
3	1	10-0036	Clutch A with Washer
2	1	10-0112	Sheave (3 dia.)
1	1	10-0394	Honda Engine GXV390DA23
<i>Item</i>	<i>Qty.</i>	<i>Part #</i>	<i>Description</i>

**TURF TEQ LLC**

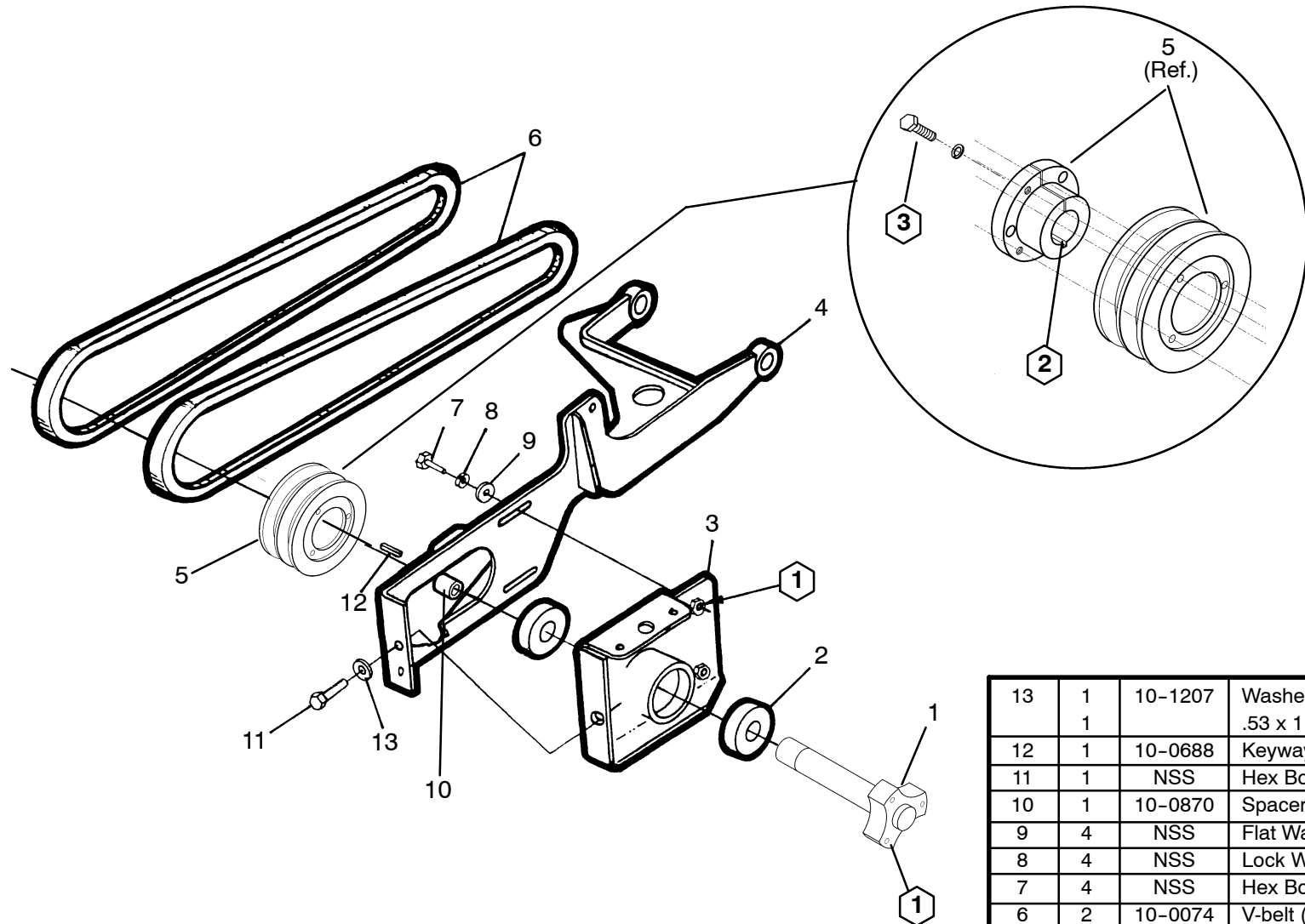
Date: 07-07

Revisions 7/07 JRD

MODEL 1305

**Engine A**

**10-0667**



**3** Torque 8 ft. lbs.

**2** Apply Anti-Seize Lubricant.

**1** Tap Threads.

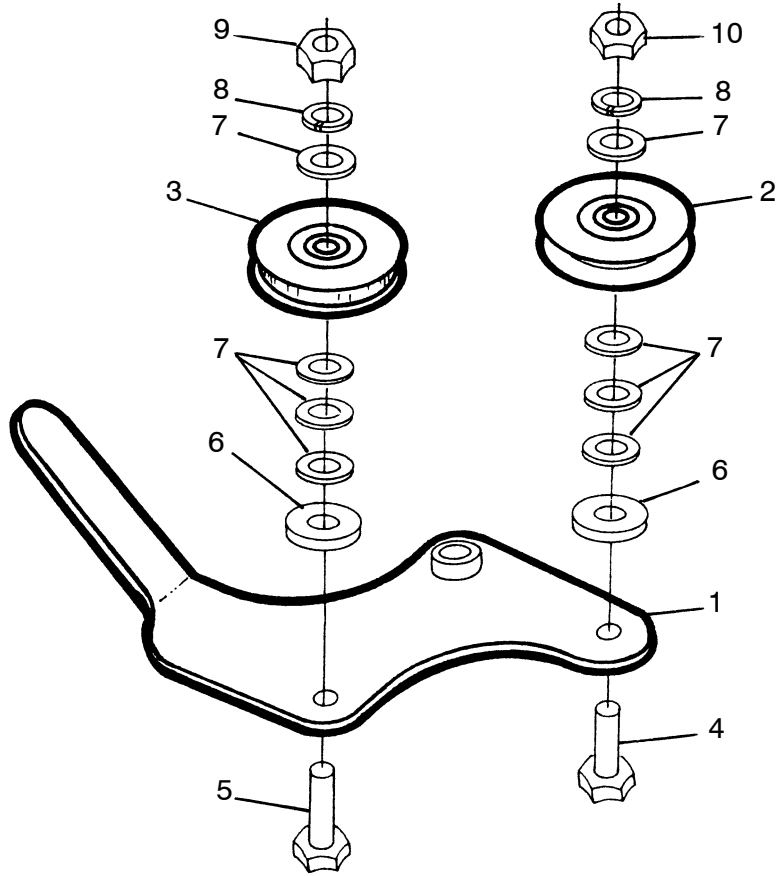
**Note:** All hardware is Grade 5, plated and course thread unless otherwise specified.

13	1	10-1207	Washer 1/2 SAE
	1		.53 x 1.06 x .09
12	1	10-0688	Keyway (7mm x 8mm)
11	1	NSS	Hex Bolt 1/2 x 3
10	1	10-0870	Spacer
9	4	NSS	Flat Washer 5/16
8	4	NSS	Lock Washer 5/16
7	4	NSS	Hex Bolt 5/16 x 1
6	2	10-0074	V-belt (BX-54)
5	1	10-0863	Sheave (6" dia.)
4	1	10-0039	Arm WA
3	1	10-0184	Adjustment Hub WA
2	2	10-0008	Bearing
1	1	10-0891	Shaft WA
<i>Item</i>	<i>Qty.</i>	<i>Part #</i>	<i>Description</i>

<b>TURF TEQ LLC</b>		Date: 08-07
<b>Arm A</b>		<b>10-0668</b>

Revisions 8/07 JRD

MODEL 1305



10	1	10-1204	Jam Nut 5/8
9	1	NSS	Nut 5/8
8	2	NSS	Lock Washer 5/8
7	8	10-1108	Washer 5/8 Machine 5/8 x 1.0 x .07
6	2	10-0693	Washer .65 x 1.25 x .25
5	1	NSS	Hex Bolt 5/8 x 3.5
4	1	NSS	Hex Bolt 5/8 x 2.0
3	1	10-0501	Flat Idler 5/8 x 3.75
2	1	10-0433	Flanged Idler 5/8 x 4
1	1	10-0586	Handle WA
<i>Item</i>	<i>Qty.</i>	<i>Part #</i>	<i>Description</i>

**Note:** All hardware is Grade 5, plated and course thread unless otherwise specified.

**TURF TEQ LLC**

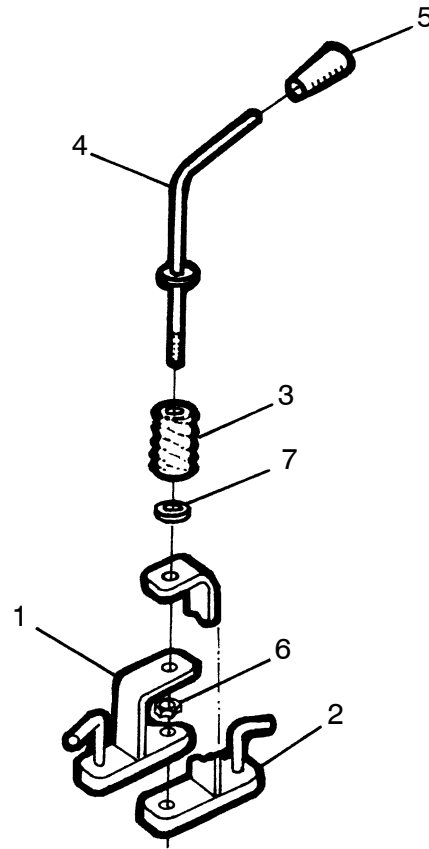
Date: 07-07

Revisions 7/07 JRD

MODEL 1305

SP Idler Arm A

**10-0669**



7	1	10-1207	Washer 1/2 SAE .53 x 7/8 x .09
6	1	NSS	Nut 1/2
5	1	10-0332	Handlegrip
4	1	10-0483	Crank WA
3	1	10-0484	Spring
2	1	10-0549	Angle WA
1	1	10-0550	Tab WA
<i>Item</i>	<i>Qty.</i>	<i>Part #</i>	<i>Description</i>

**Note:** All hardware is Grade 5, plated and course thread unless otherwise specified.

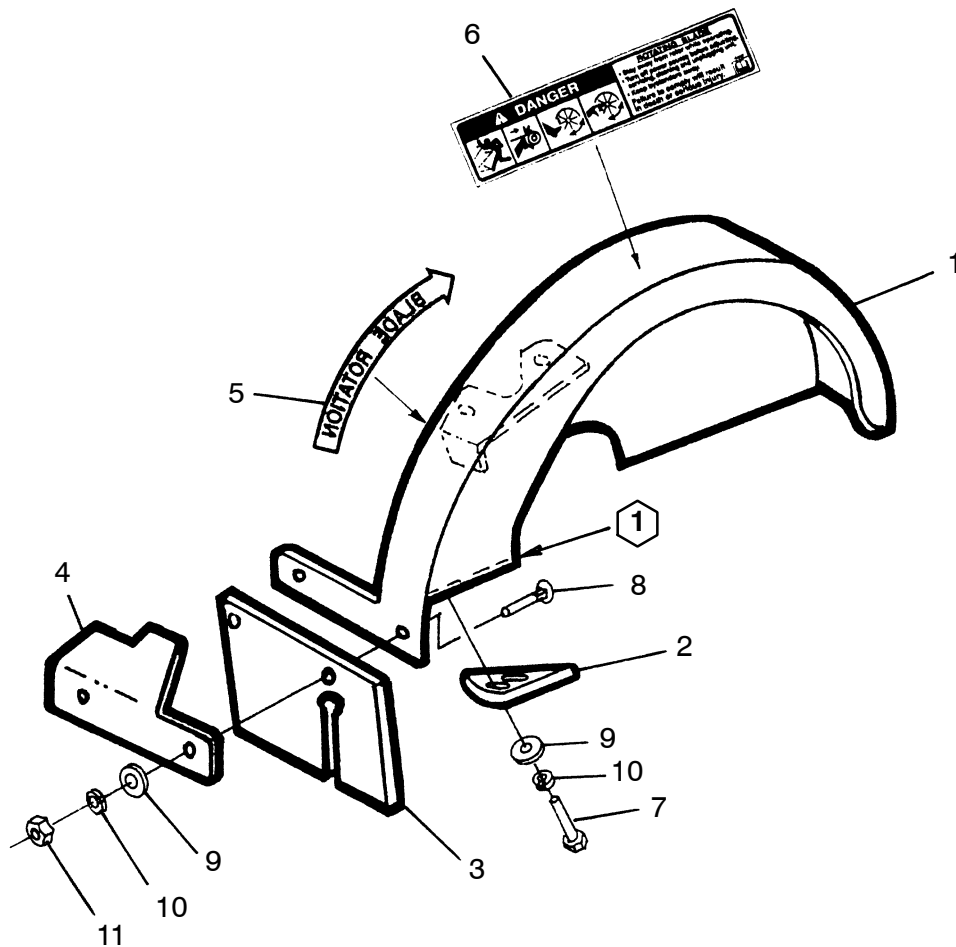
<b>TURF TEQ LLC</b>	Date: 07-07
<b>Cover Clamp A</b>	<b>10-0671</b>

Revisions 7/07 JRD

MODEL 1305

Cover Clamp A

10-0671



1 Tap Threads.

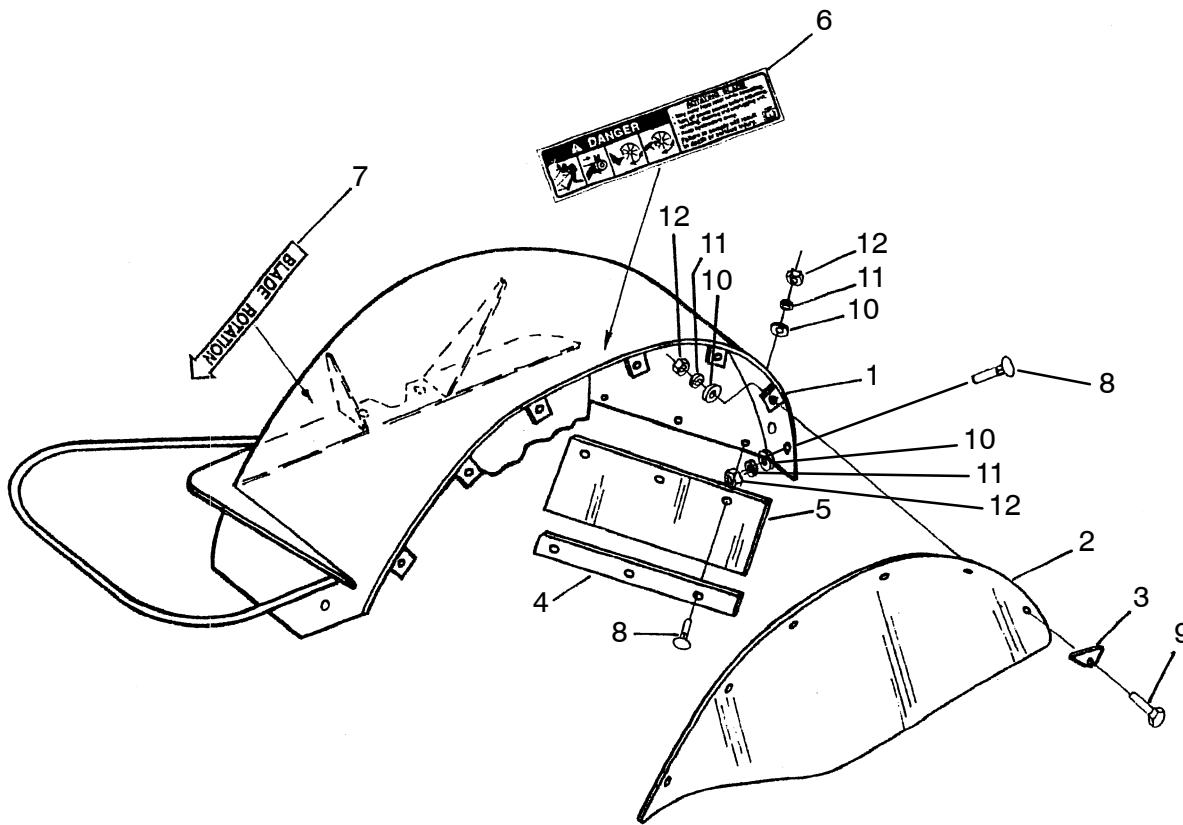
**Note:** All hardware is Grade 5, plated and course thread unless otherwise specified.

11	2	NSS	Nut 5/16
10	4	NSS	Lock Washer 5/16
9	4	10-1214	Washer 5/16 SAE
8	2	NSS	Carr. Bolt 5/16 x 3/4
7	2	NSS	Hex Bolt 5/16 x 3/4
6	1	10-0437	Decal - Danger
5	1	10-0443	Decal - Blade Rotation
4	1	10-0294	Guard
3	1	10-0285	Flap
2	1	10-0292	Disc Scraper
1	1	10-0180	Groomer Shield WA
<i>Item</i>	<i>Qty.</i>	<i>Part #</i>	<i>Description</i>

<b>TURF TEQ LLC</b>		Date: 07-07
---------------------	--	-------------

Revisions	7/07 JRD	MODEL 1305	<b>Groomer Shield A</b>	<b>G1/10-0672</b>
-----------	----------	------------	-------------------------	-------------------





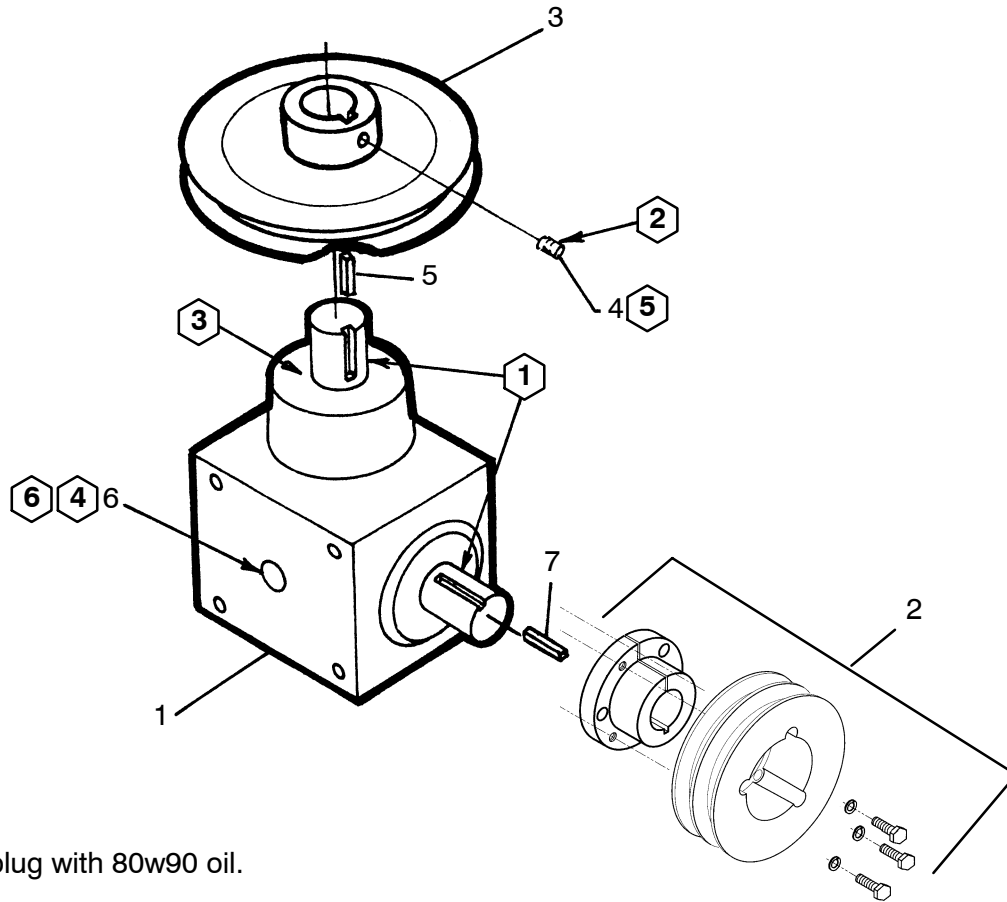
12	11	NSS	Nut 5/16
11	11	NSS	Lock Washer 5/16
10	11	10-1214	Washer 5/16 SAE
9	6	NSS	Hex Bolt 5/16 x 1
8	5	NSS	Carr. Bolt 5/16 x 3/4
7	1	10-0445	Decal - Blade Rotation
6	1	10-0437	Decal - Danger
5	1	10-0380	Flap
4	1	10-0388	Strap
3	6	10-0646	Clip
2	1	10-0491	Cover
1	1	10-0424	Open/Trench Shield WA
<i>Item</i>	<i>Qty.</i>	<i>Part #</i>	<i>Description</i>

**Note:** All hardware is Grade 5, plated and course thread unless otherwise specified.

<b>TURF TEQ LLC</b>	Date: 07-07
<b>Open/Trench Shield A</b>	<b>G2/10-0673</b>

Revisions	7/07 JRD
-----------	----------

MODEL 1305
------------



- 6** Fill to plug with 80w90 oil.
- 5** Set screws are supplied by sheave vendor.
- 4** Apply teflon tape or teflon sealant after plug removal.
- 3** If vendor shipped gearbox with an aluminum dust shield, remove it and discard.
- 2** Apply Loctite 271 Threadlocker to all set screws.
- 1** Apply Anti-Seize Lubricant.

**Note:** All hardware is Grade 5, plated and course thread unless otherwise specified.

7	1	10-1117	Key 1/4 x 1.5
6	3	10-1208	Oil Fill Plug
5	1	10-1115	Key 1/4 x 1
4	4	ref.	Set Screw (5/16 dia. x 3/8) included with 10-0225
3	1	10-0225	Sheave (6" dia.)
2	1	10-0648	Sheave (4" dia.), Includes Hub and Screws
1	1	10-0565	Gearbox
<i>Item</i>	<i>Qty.</i>	<i>Part #</i>	<i>Description</i>

**TURF TEQ LLC**

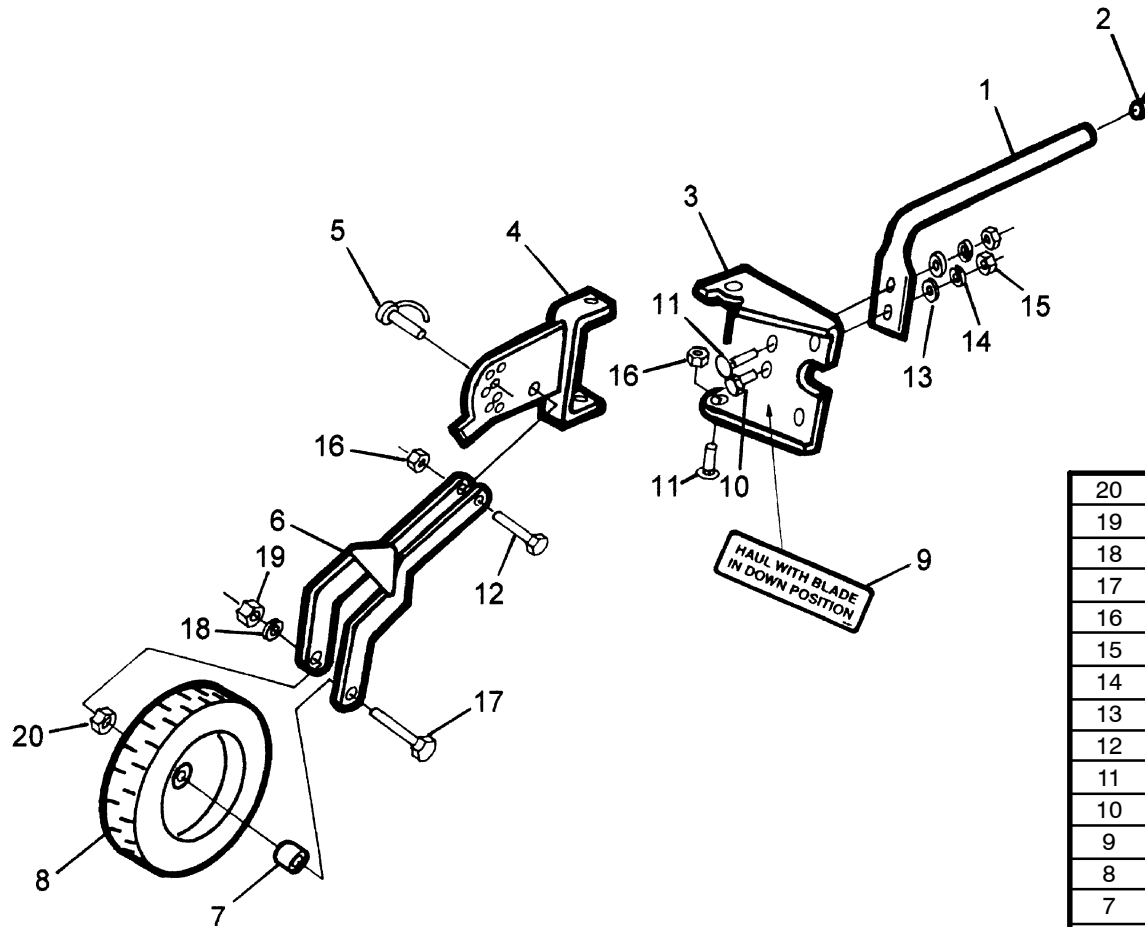
Date: 08-07

Revisions 8/07 JRD

MODEL 1305

**Gearbox A**

**10-0676**



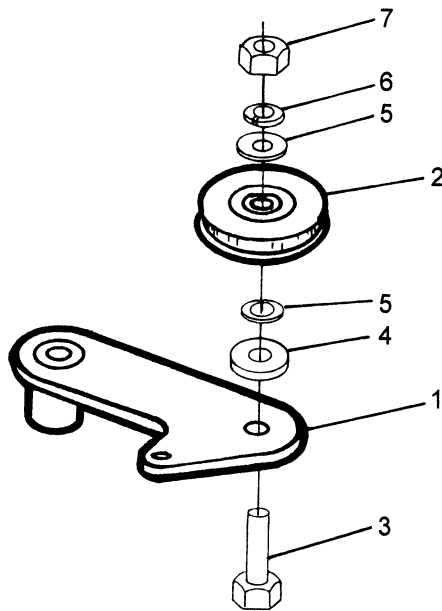
20	1	10-1204	Jam Nut 1/2
19	1	NSS	Nut 1/2
18	1	NSS	Lock Washer 1/2
17	1	NSS	Hex Bolt 1/2 x 4
16	3	NSS	Lock Nut 3/8
15	4	NSS	Nut 3/8
14	2	NSS	Lock Washer 3/8
13	6	NSS	Washer 3/8
12	1	NSS	Hex Bolt 3/8 x 1-1/4
11	3	NSS	Carr. Bolt 3/8 x 1
10	1	NSS	Hex Bolt 3/8 x 1
9	1	10-0611	Decal
8	1	10-0430	Depth Control Tire
7	1	10-0663	Spacer
6	1	10-0601	Dolly Arm WA
5	1	10-0574	Snap Pin 3/8 x 1.37
4	1	10-0603	Pivot Plate WA
3	1	10-0597	Pivot Mount
2	1	10-0354	End Plug
1	1	10-0604	Guard
<i>Item</i>	<i>Qty.</i>	<i>Part #</i>	<i>Description</i>

**Note:** All hardware is Grade 5, plated and course thread unless otherwise specified.

<b>TURF TEQ LLC</b>		Date: 07-07
Revisions	7/07 JRD	<b>10-0677</b>

MODEL 1305

**Guage Wheel A**



7	1	NSS	Nut 5/8
6	1	NSS	Lock Washer 5/8
5	2	10-1108	Washer 5/8 Machine .62 x 1.0 x .07
4	1	10-0693	Washer .65 x 1.25 x .25
3	1	NSS	Hex Bolt 5/8 x 1.75
2	1	10-0501	Flat Idler 5/8 x 3.75
1	1	10-0584	Idler Arm WA
<i>Item</i>	<i>Qty.</i>	<i>Part #</i>	<i>Description</i>

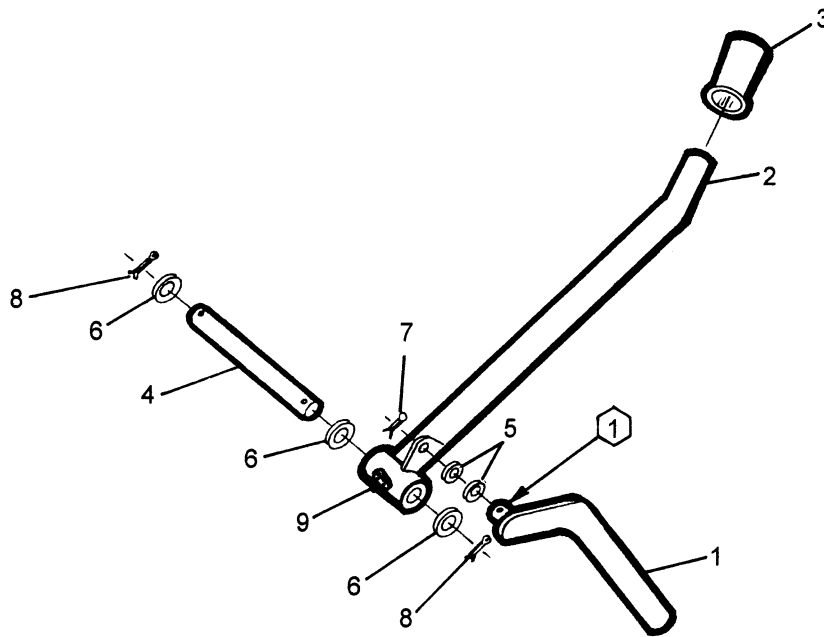
**Note:** All hardware is Grade 5, plated and course thread unless otherwise specified.

<b>TURF TEQ LLC</b>	Date: 03-01-06
<b>Revisions</b>	<b>10-0679</b>

3/1/06 KRU

MODEL 1305

Idler Arm A



① Apply Anti-Seize Lubricant.

**Note:** All hardware is Grade 5, plated and course thread unless otherwise specified.

9	1	10-1120	Lub Fitting
8	2	10-1209	Cotter Pin 1/8 x 1
7	1	10-1210	Cotter Pin 3/32 x 3/4
6	3	10-1109	Washer 3/4 Machine .762 x 1.25 x .07
5	2	10-1207	Washer 1/2 SAE .53 x 1.06 x .09
4	1	10-0351	Rod
3	1	10-0190	Handlegrip (1" dia.)
2	1	10-0348	Handle WA
1	1	10-0346	Lift Link WA
<i>Item</i>	<i>Qty.</i>	<i>Part #</i>	<i>Description</i>

**TURF TEQ LLC**

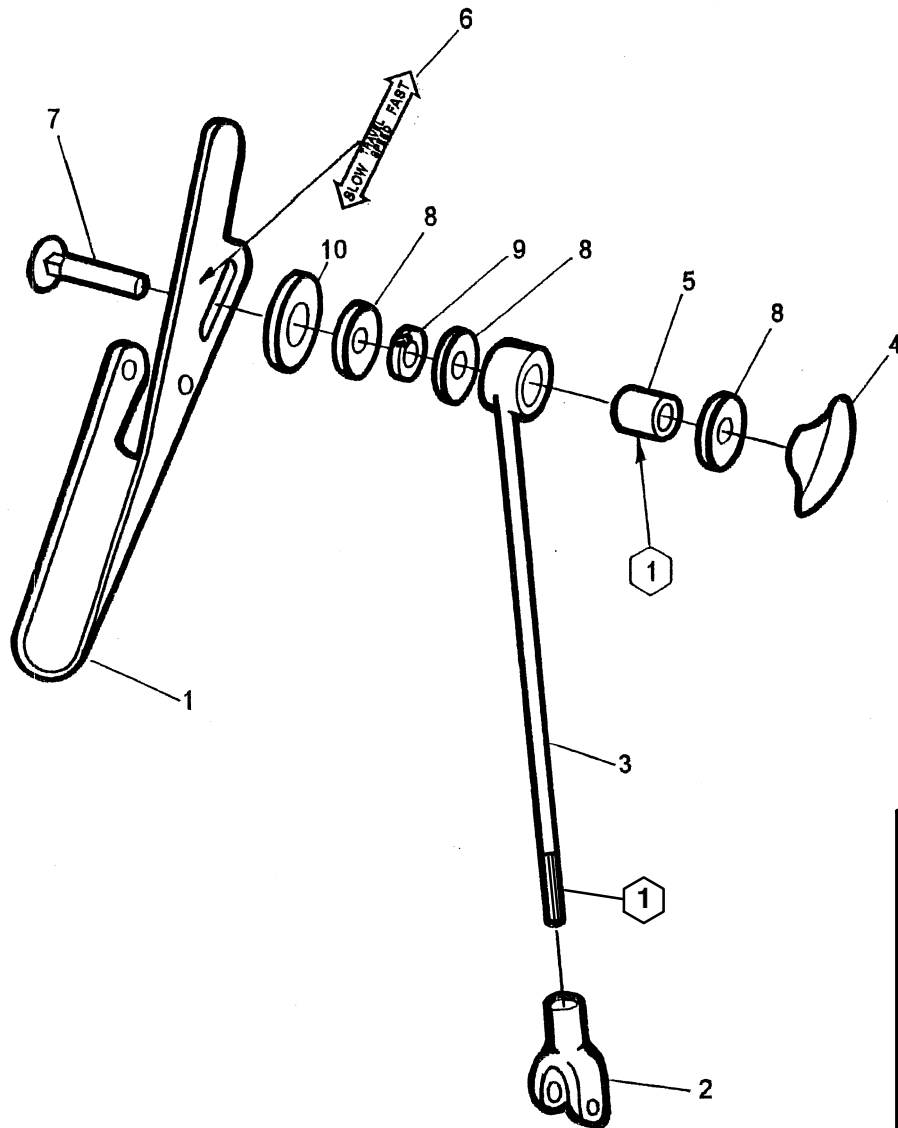
Date: 07-07

Revisions 7/07 JRD

MODEL 1305

Lift Arm A

**10-0680**



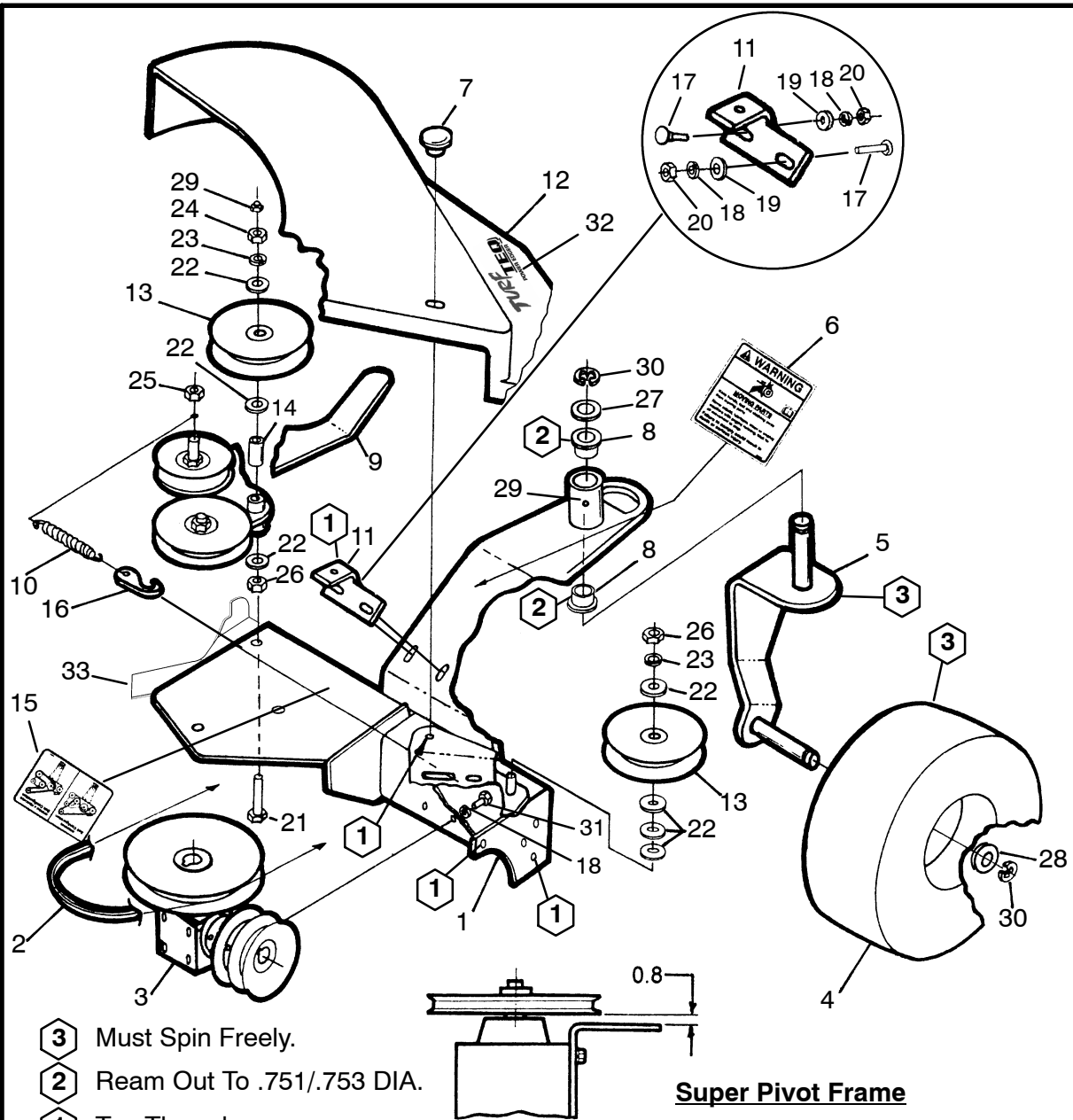
① Apply Anti-Seize Lubricant.

**Note:** All hardware is Grade 5, plated and course thread unless otherwise specified.

10	1	10-1107	Washer 1/2 USS 9/16 x 1-3/8 x .10
9	1	NSS	Lock Washer 3/8
8	3	10-1105	Washer 5/16 USS 3/8 x 7/8 x .07
7	1	NSS	Carr. Bolt 3/8 x 2
6	1	10-0447	Decal - Travel Speed
5	1	10-0619	Spacer
4	1	10-0664	T-Knob
3	1	10-0881	Rod WA
2	1	10-0449	Yoke End
1	1	10-0254	Handle
<i>Item</i>	<i>Qty.</i>	<i>Part #</i>	<i>Description</i>

<b>TURF TEQ LLC</b>	Date: 08-07
---------------------	-------------

Revisions	8/07 JRD	MODEL 1305	Hydro Handle A	<b>10-0682</b>
-----------	----------	------------	----------------	----------------



- 3** Must Spin Freely.
- 2** Ream Out To .751/.753 DIA.
- 1** Tap Threads.

**Note:** All hardware is Grade 5, plated and course thread unless otherwise specified.

33	1	10-1008	Bracket
32	1	10-1184	Turf Teq Power Edger Decal
31	4	NSS	Hex Bolt 5/16 x 3/4
30	2	10-1112	E-clip 3/4 Shaft 1.1 O.D.x.05 Tk.
29	2	10-1120	Lub Fitting 1/4
28	1	10-1211	Washer 3/4 SAE .81x1.5x.13
27	1	10-1109	Washer 3/4 Machine 3/4x1.25x.07
26	2	10-1212	Jam Nut 5/8
25	1	10-1213	Lock Nut 5/8
24	1	NSS	Nut 5/8
23	2	NSS	Lock Washer 5/8
22	7	10-1108	Washer 5/8 Machine 5/8x1.0x.07
21	1	10-0587	Drilled Tap Bolt 5/8 x 3.5
20	2	NSS	Nut 5/16
19	2	10-1214	Washer 5/16 SAE .34x.68x.06
18	6	NSS	Lock Washer 5/16
17	2	NSS	Carr. Bolt 5/16 x 1
16	1	10-0363	Spring Hook
15	1	10-0440	Decal - Belt Configuration
14	1	10-0659	Spacer
13	2	10-0433	Idler 5/8 x 4
12	1	10-0387	Shield WA
11	1	10-0431	Support WA
10	1	10-0625	Ext. Spring C-329 7/8x8.5x.10
9	1	10-0669	Idler Arm A
8	2	10-0084	Bushing
7	2	10-0618	Shield Knob
6	1	10-0438	Warning Decal
5	1	10-0116	Dolly WA
4	1	10-0006	Dolly Wheel
3	1	10-0676	Gearbox A
2	1	10-0075	Double Sided Belt (BB-62)
1	1	10-0032	Frame WA
Item	Qty.	Part #	Description

**TURF TEQ LLC**

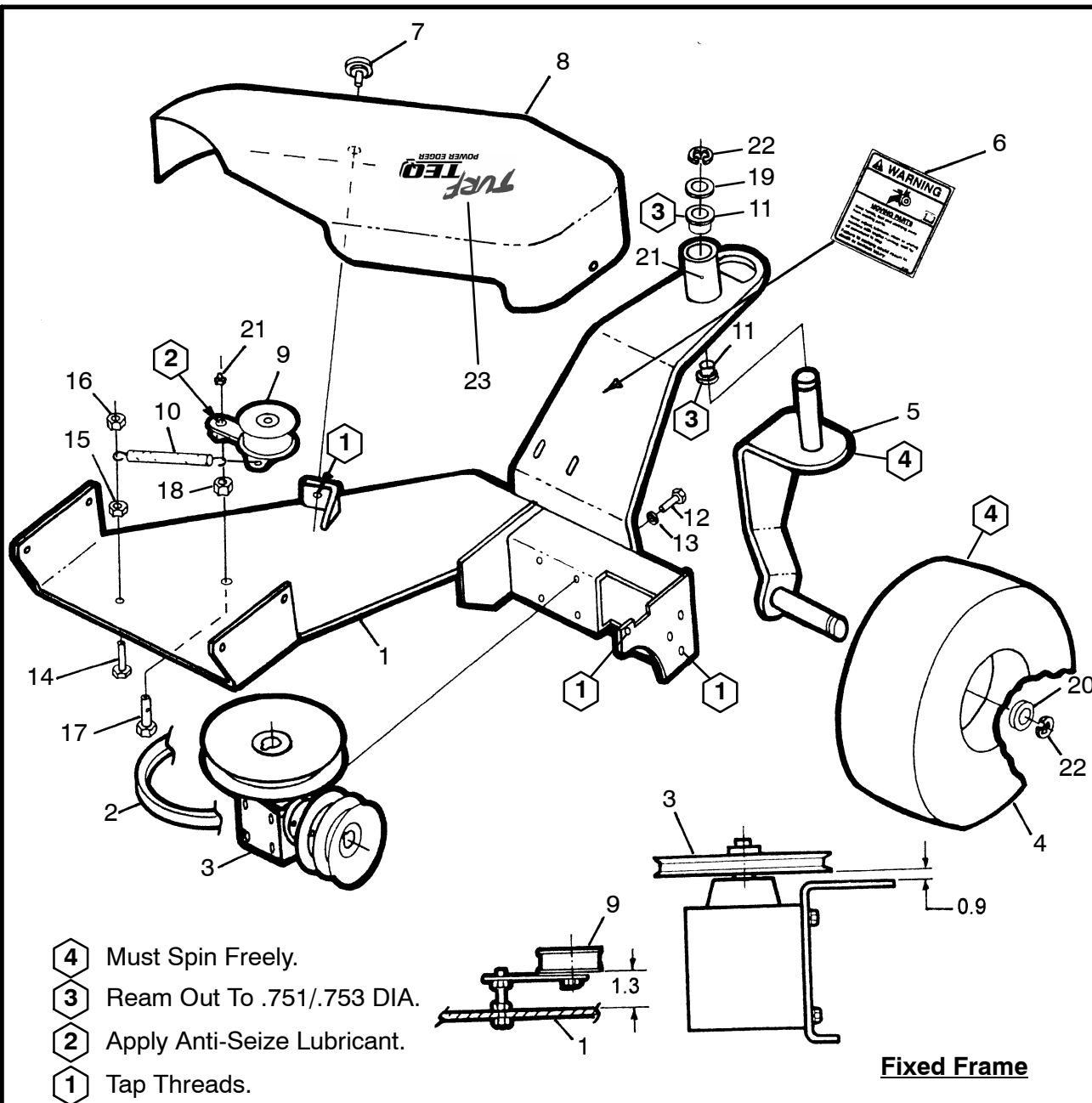
Date: 08-07

Revisions 8/07 JRD

MODEL 1305

**Super Pivot Front A**

**10-0697**



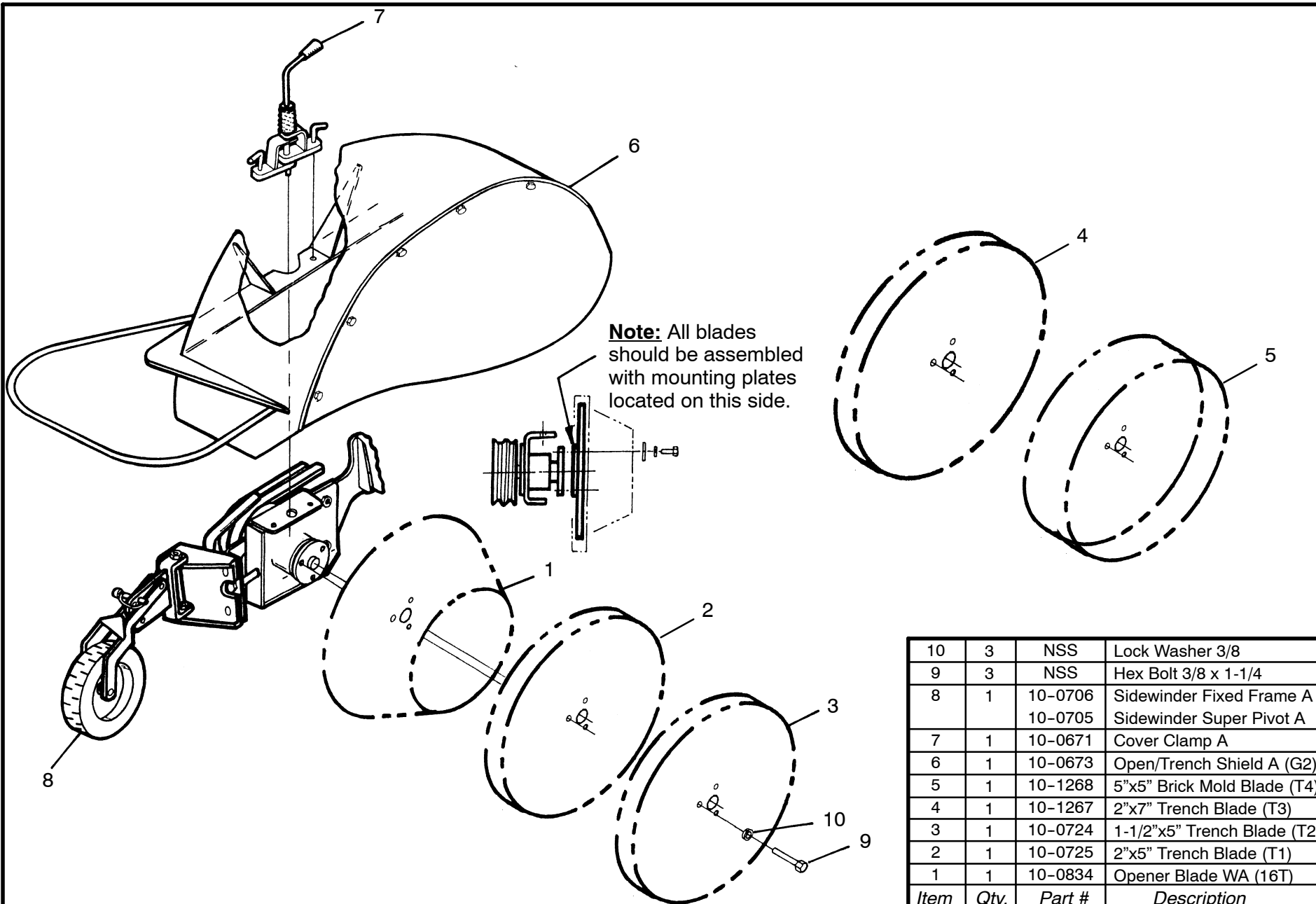
- 4** Must Spin Freely.
- 3** Ream Out To .751/.753 DIA.
- 2** Apply Anti-Seize Lubricant.
- 1** Tap Threads.

**Note:** All hardware is Grade 5, plated and course thread unless otherwise specified.

23	1	10-1184	Turf Teq Power Edger Decal
22	2	10-1112	E-clip 3/4 Shaft 1.1 O.D.x.05tk.
21	2	10-1120	Lub Fitting 1/4
20	1	10-1211	Washer 3/4 SAE .81x1.5x.13
19	1	10-1109	Washer 3/4 Machine 3/4x1.2x.07
18	1	10-1212	Jam Nut 5/8
17	1	10-0585	Drilled Tap Bolt 5/8 x 1-3/4
16	1	10-1215	Lock Nut 3/8
15	1	NSS	Nut 3/8
14	1	NSS	Hex Bolt 3/8 x 1-1/4
13	4	NSS	Lock Washer 5/16
12	4	NSS	Hex Bolt 5/16 x 3/4
11	2	10-0084	Bushing
10	1	10-0662	Ext Spring C-257 .81x4.5
9	1	10-0679	Idler Arm A
8	1	10-0610	Guard WA
7	2	10-0618	Shield Knob
6	1	10-0438	Warning Decal
5	1	10-0116	Dolly WA
4	1	10-0006	Dolly Wheel
3	1	10-0676	Gearbox A
2	1	10-0480	V-belt (B-44)
1	1	10-0470	Fixed Frame WA
Item	Qty.	Part #	Description

<b>TURF TEQ LLC</b>		Date: 08-07	
Revisions		MODEL 1305	<b>Fixed Front A</b>
8/07 JRD		<b>10-0698</b>	





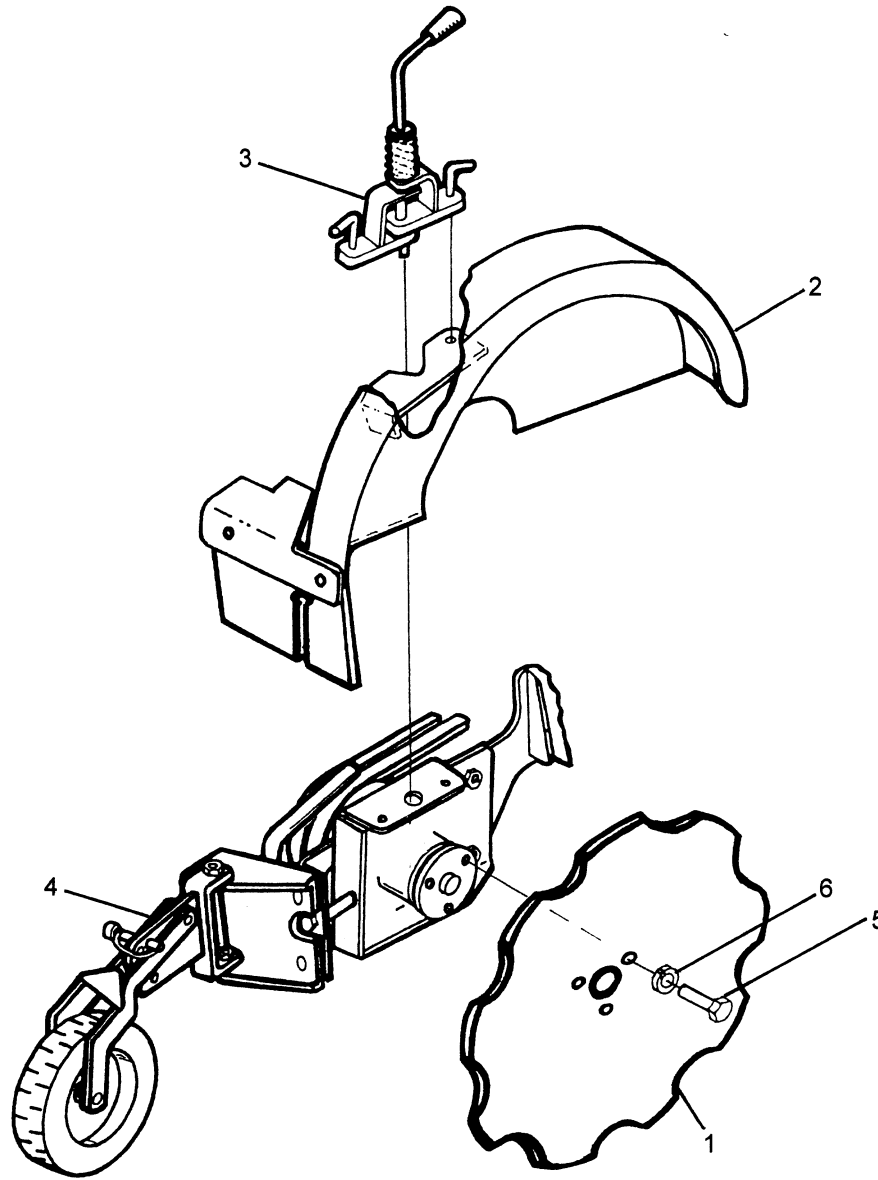
10	3	NSS	Lock Washer 3/8
9	3	NSS	Hex Bolt 3/8 x 1-1/4
8	1	10-0706	Sidewinder Fixed Frame A
		10-0705	Sidewinder Super Pivot A
7	1	10-0671	Cover Clamp A
6	1	10-0673	Open/Trench Shield A (G2)
5	1	10-1268	5"x5" Brick Mold Blade (T4)
4	1	10-1267	2"x7" Trench Blade (T3)
3	1	10-0724	1-1/2"x5" Trench Blade (T2)
2	1	10-0725	2"x5" Trench Blade (T1)
1	1	10-0834	Opener Blade WA (16T)
<i>Item</i>	<i>Qty.</i>	<i>Part #</i>	<i>Description</i>

**Note:** All hardware is Grade 5, plated and course thread unless otherwise specified.

<b>TURF TEQ LLC</b>		Date: 08-07
Revisions	8/07 JRD	<b>10-0699</b>

MODEL 1300

Opener Blade/Cover A



6	3	NSS	Lock Washer 3/8
5	3	NSS	Hex Bolt 3/8 x 1-1/4
4	1	10-0705	Sidewinder Super Pivot A
3	1	10-0671	Cover Clamp A
2	1	10-0672	Groomer Shield A
1	1	10-0007	Disc
<i>Item</i>	<i>Qty.</i>	<i>Part #</i>	<i>Description</i>

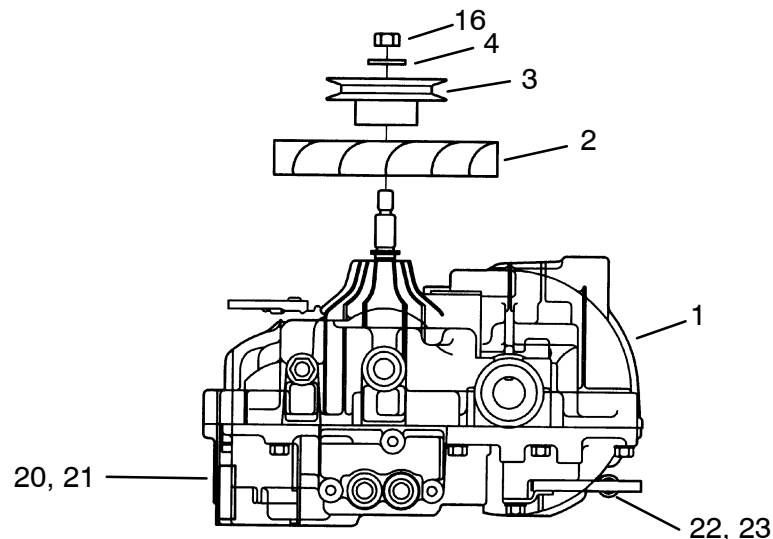
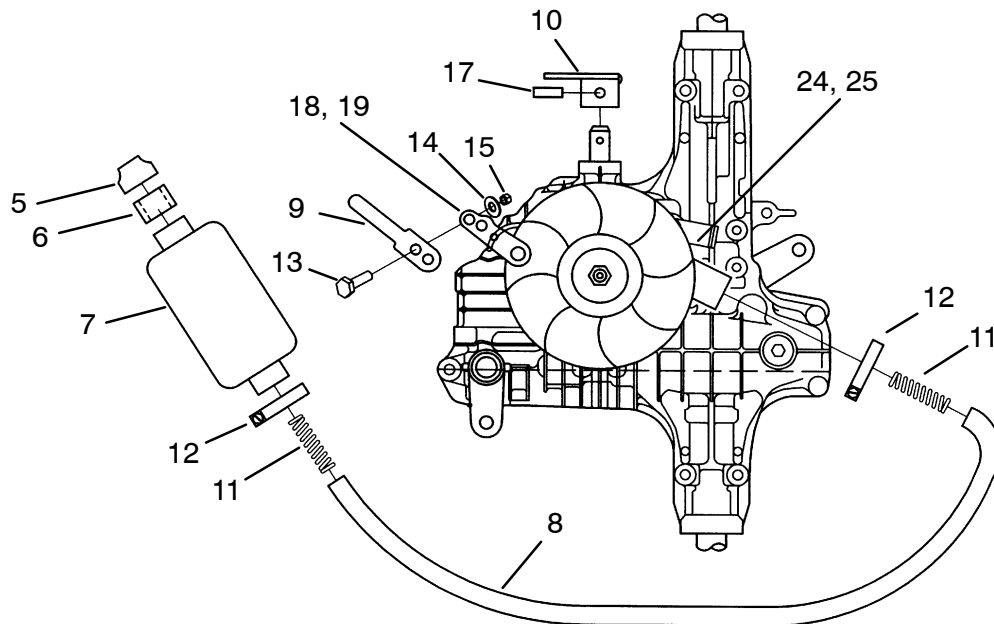
**Note:** All hardware is Grade 5, plated and course thread unless otherwise specified.

<b>TURF TEQ LLC</b>		Date: 07-07
Revisions	7/07 JRD	<b>10-0700</b>

MODEL 1300

Groomer Blade/Cover A

**10-0700**



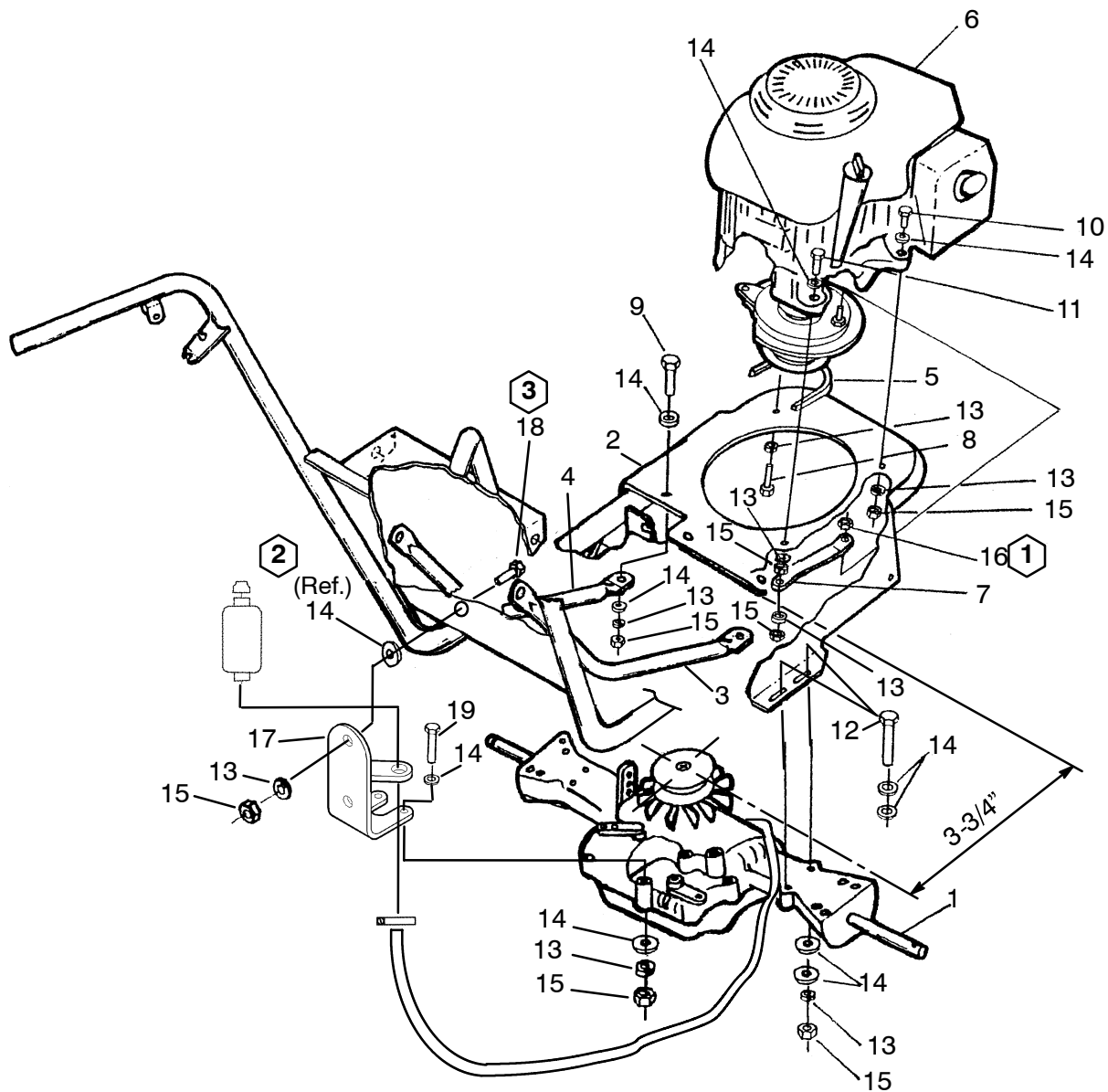
25	1	10-1256	Oil Inlet O-Ring
24	1	10-1255	Oil Inlet
23	2	10-1254	O-Ring
22	1	10-1253	Differential Lock Lever
21	1	10-1252	O-Ring
20	1	10-1251	Drain Plug
19	1	10-1247	Spring Lock Retaining Pin
18	1	10-1245	Hydro Release Lever
17	1	10-1119	Metric Spring Pin 6m x 34m
16	1	10-1216	Lock Nut M10 x 1.50
15	1	NSS	Nut 1/4
14	1	NSS	Lock Washer 1/4
13	1	NSS	Hex Bolt 1/4 x 3/4
12	2	10-0859	3/4 Worm Gear Clamp
11	2	10-1037	Spring 3/4 dia. x 5.62
10	1	10-0755	Arm WA
9	1	10-0824	Arm WA
8	1	10-1038	Rubber Hose 1.06 x 19
7	1	10-0838	400 CC Reservoir
6	1	10-0842	Reservoir Filter
5	1	10-0841	Reservoir Cap
4	1	BR-0132	Washer .4 x 1.5 x .40
3	1	10-0840	Pully (3.12 dia.)
2	1	10-0839	Fan (7" dia.)
1	1	10-0899	K62 Transmission
<i>Item</i>	<i>Qty.</i>	<i>Part #</i>	<i>Description</i>

**Note:** All hardware is Grade 5, plated and course thread unless otherwise specified.

<b>TURF TEQ LLC</b>		Date: 08-07
Revisions	8/07 JRD	<b>10-0935</b>

MODEL 1305

**K62 Transmission A**



- 1 Apply Loctite 271 Thread Locker
- 2 "If needed" install #14 washer (as many as required after #5 v-belt has been installed and tightened.)
- 3 Tighten #18 carr. bolt after #5 v-belt has been installed and tightened.

19	2	NSS	Hex Bolt 5/16 x 2-1/4
18	1	NSS	Carr. Bolt 5/6 x 1
17	1	10-0818	Mount
16	1	10-1225	Lock Nut 5/16
15	12	NSS	Nut 5/16
14	26	10-1214	Washer 5/16 SAE
13	13	NSS	Lock Washer 5/16
12	4	NSS	Hex Bolt 5/16 x 3
11	1	NSS	Hex Bolt 5/16 x 2
10	1	NSS	Hex Bolt 5/16 x 1-1/2
9	2	NSS	Hex Bolt 5/16 x 1
8	2	10-1226	Hex Bolt 5/16 x 3/4 Fine Thread
7	1	10-0247	Link
6	1	10-0667	Engine A
5	1	10-0902	V-Belt (A-28)
4	1	10-0616	Stiffener LH
3	1	10-0352	Stiffener RH
2	1	10-0191	Handlebar WA
1	1	10-0935	K62 Transmission A
<i>Item</i>	<i>Qty.</i>	<i>Part #</i>	<i>Description</i>

**Note:** All hardware is Grade 5, plated and course thread unless otherwise specified.

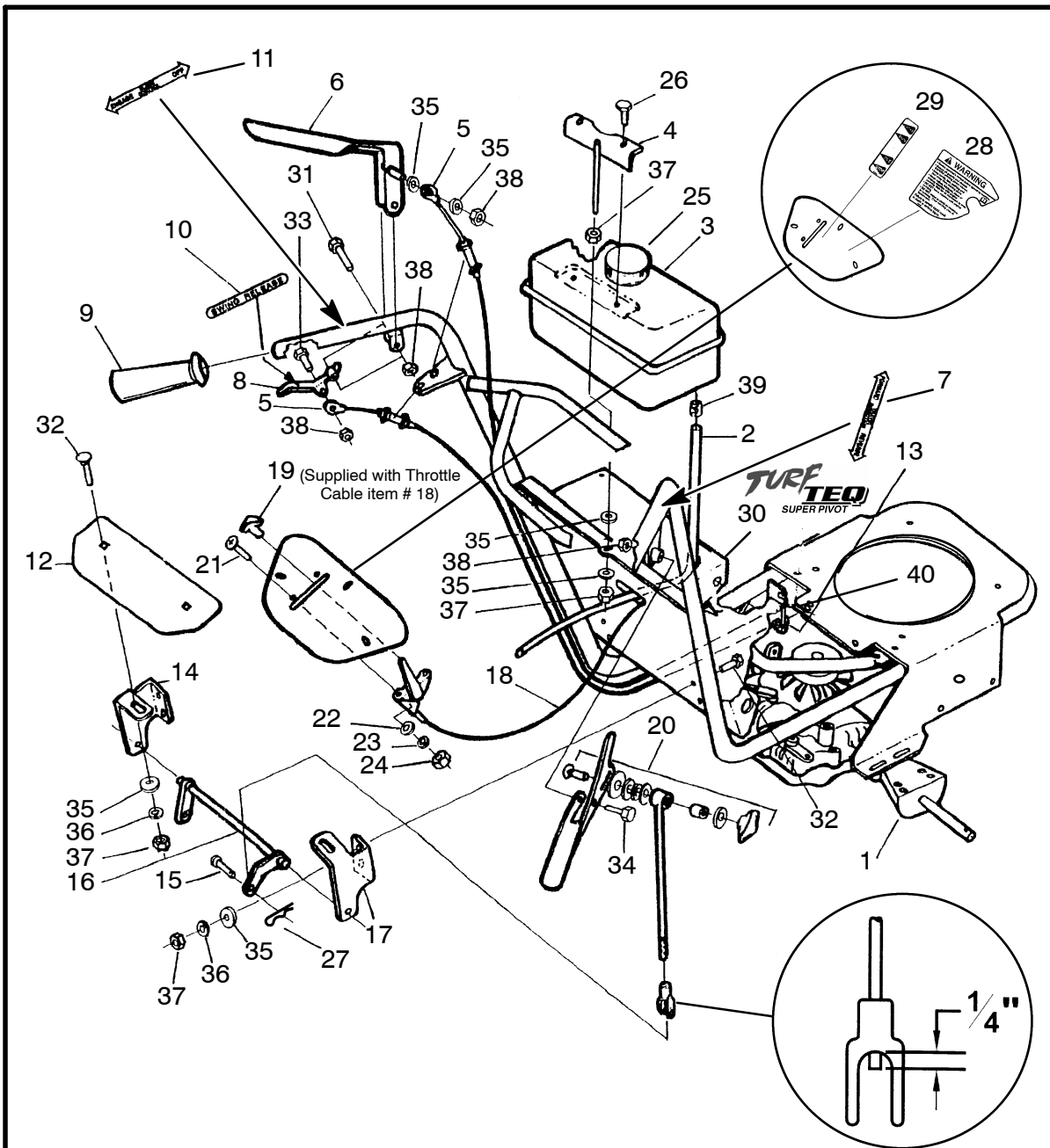
Revisions 11/07 JRD

MODEL 1305

Tractor Frame/Trans A

Date: 11-07

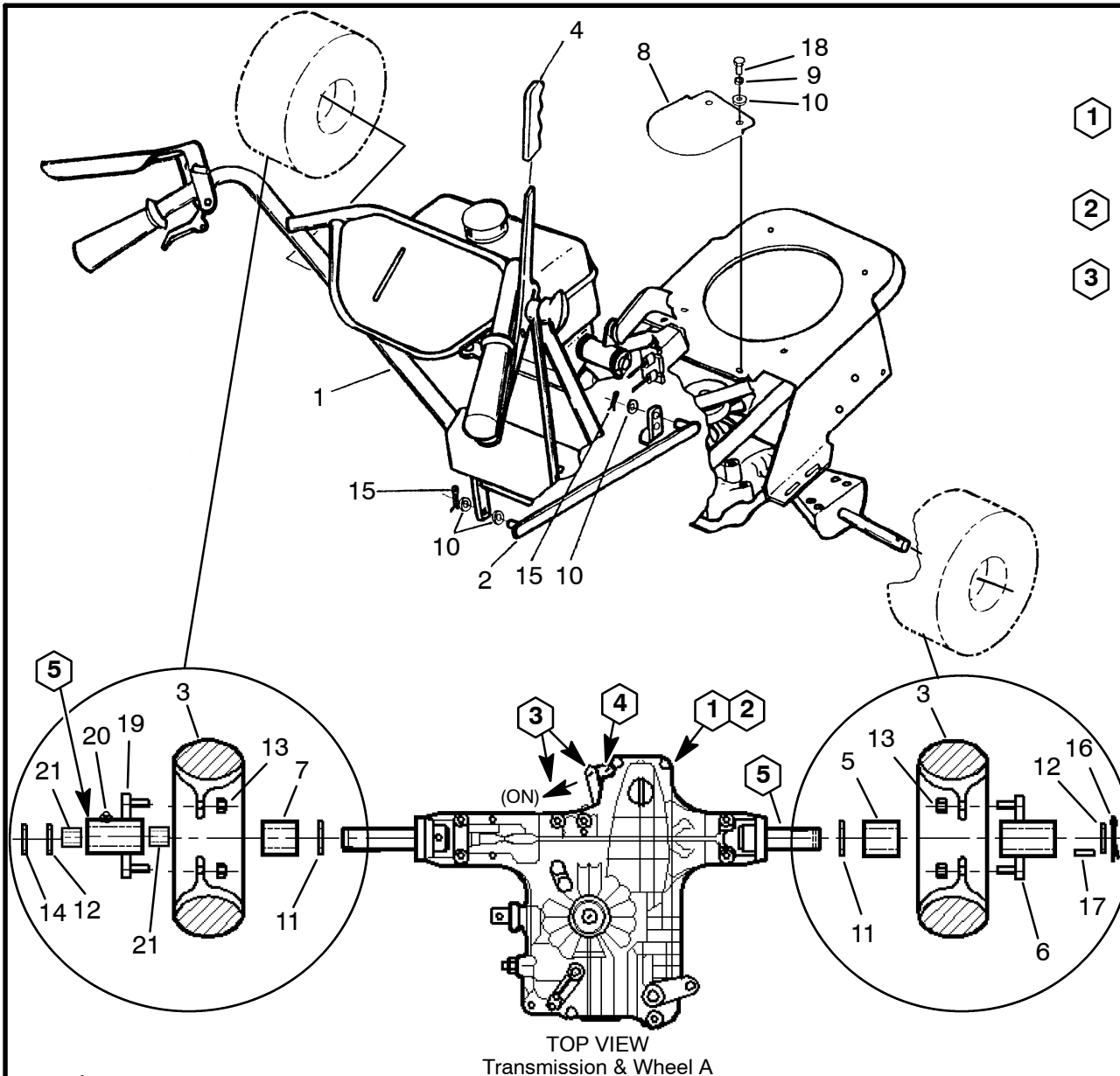
10-0939




40	1	10-1271	Clutch Cable Spring
39	1	10-1230	Hose Clamp - Screw
38	4	10-1225	Lock Nut 5/16
37	8	NSS	Nut 5/16
36	6	NSS	Lock Washer 5/16
35	10	10-1214	Washer 5/16 SAE .34 x .68 x .06
34	1	NSS	Hex Bolt 5/16 x 1-3/4
33	1	NSS	Hex Bolt 5/16 x 1-1/4
32	6	NSS	Carr. Bolt 5/16 x 3/4
31	1	NSS	Hex Bolt 5/16 x 2
30	1	10-1185	Turf Teq Super Pivot Decal
29	1	10-0441	Decal - Throttle
28	1	10-0439	Decal - Warning
27	1	10-1122	Hairpin .06 x 1.31
26	2	10-1229	Self Tapping Hex Screw 3/16 x 3/4
25	1	10-0729	Gas Cap
24	2	NSS	Nut #10
23	2	NSS	Lock Washer #10
22	2	NSS	Washer #10 SAE .21 x .5 x .04
21	2	NSS	Pan Head Machine Screw #10 x 3/4
20	1	10-0682	Hydro Handle A
19	1	10-1227	Throttle Control Handle
18	1	10-0135	Throttle Control Lever A
17	1	10-0340	Bracket RH
16	1	10-0855	Link WA
15	1	10-0615	Clevis Pin 5/16 x 1
14	1	10-0339	Bracket LH
13	2	10-1111	E-clip (1/4 shaft)
12	1	10-0900	Plate
11	1	10-0446	Decal - Blade Control
10	1	10-0444	Decal - Swing Release
9	2	10-0190	Handle Grip
8	1	10-0253	Trigger WA
7	1	10-0448	Decal - Forward / Reverse
6	1	10-0257	Clutch Handle WA
5	2	10-0434	Control Cable A
4	1	10-0395	Hold Down WA
3	1	10-0264	Fuel Tank A
2	1	10-0452	Fuel Hose
1	1	10-0939	Tractor Frame/Trans. A
Item	Qty.	Part #	Description

**Note:** All hardware is Grade 5, plated and course thread unless otherwise specified.

Revisions	11/07 JRD	MODEL 1305	<b>TURF TEQ LLC</b>	Date:11-07
			<b>Tractor Controls A</b>	<b>10-0940</b>



### DIFF-LOC ARM POSITIONING

- 1 Remove spring & spring mounting bracket from transmission. Reinstall hardware with a additional 5/16 washer.
- 2 Bend spring mounting bracket from 90° to 108°. 
- 3 Pivot diff-loc control arm completely out (as shown) then reinstall spring mounting bracket at position 4 to hold diff-loc arm out in the "ON" position.

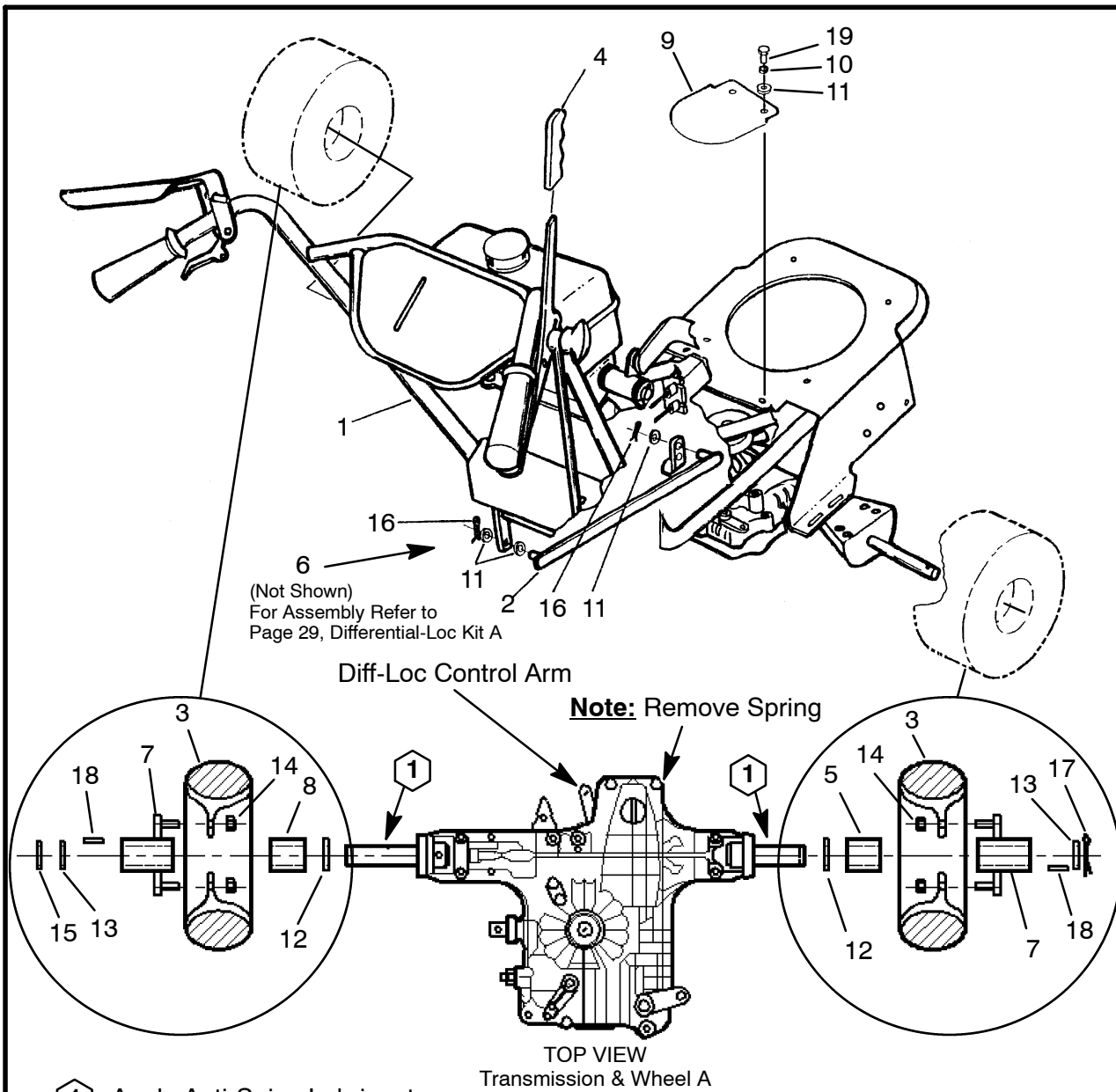
**NOTE:** Transmission axle may have to rotate a little for diff-loc to snap into the on position.

21	2	10-0104	Bushing
20	1	10-1120	Grease Fitting
19	1	10-1097	Wheel Hub (Bushing)
18	2	NSS	Hex Bolt 5/16 x 3/4
17	2	10-1116	Key 1/4 x 1.25
16	1	10-1222	Cotter Pin 1/8 x 1-3/4
15	2	10-1210	Cotter Pin 3/32 x 3/4
14	1	10-1113	E-Clip 1
13	8	10-1219	Lug Nut 1/2 Fine Thread
12	2	10-1110	Washer 1 Machine
11	2	10-1217	Washer 1 SAE
10	5	10-1214	Washer 5/16 SAE
9	2	NSS	Lock Washer 5/16
8	1	10-0848	Shield
7	1	10-0892	Spacer (2.75 Length)
6	1	10-0847	Wheel Hub
5	1	10-0875	Spacer
4	1	10-0474	Handle
3	2	10-0846	Tire & Rim A
2	1	10-0764	Link WA
1	1	10-0940	Tractor Controls A
Item	Qty.	Part #	Description

5 Apply Anti-Seize Lubricant.

**Notes:** Does Not Include Diff-Loc or Wheel-Loc Kits. All hardware is Grade 5, plated and course thread unless otherwise specified.

TURF TEQ LLC		Date: 07-07
Revisions	7/07 JRD	MODEL 1305
Tractor Only A		1305TR/10-0941



(Not Shown)  
For Assembly Refer to  
Page 29, Differential-Loc Kit A

Diff-Loc Control Arm

**Note:** Remove Spring

TOP VIEW  
Transmission & Wheel A

① Apply Anti-Seize Lubricant.

**Notes:** Includes Diff-Loc Kit. Does Not Include Wheel-Loc Kit.  
All hardware is Grade 5, plated and course thread unless otherwise specified.

19	2	NSS	Hex Bolt 5/16 x 3/4
18	2	10-1116	Key 1/4 x 1.25
17	1	10-1222	Cotter Pin 1/8 x 1-3/4
16	2	10-1210	Cotter Pin 3/32 x 3/4
15	1	10-1113	E-Clip 1
14	8	10-1219	Lug Nut 1/2 Fine Thread
13	2	10-1110	Washer 1 Machine
12	2	10-1217	Washer 1 SAE
11	5	10-1214	Washer 5/16 SAE
10	2	NSS	Lock Washer 5/16
9	1	10-0848	Shield
8	1	10-0892	Spacer
7	2	10-0847	Wheel Hub
6	1	10-0937	K1305DL Diff-Loc Kit
5	1	10-0875	Spacer
4	1	10-0474	Handle
3	2	10-0846	Tire & Rim A
2	1	10-0764	Link WA
1	1	10-0940	Tractor Controls A
Item	Qty.	Part #	Description

TURF TEQ LLC

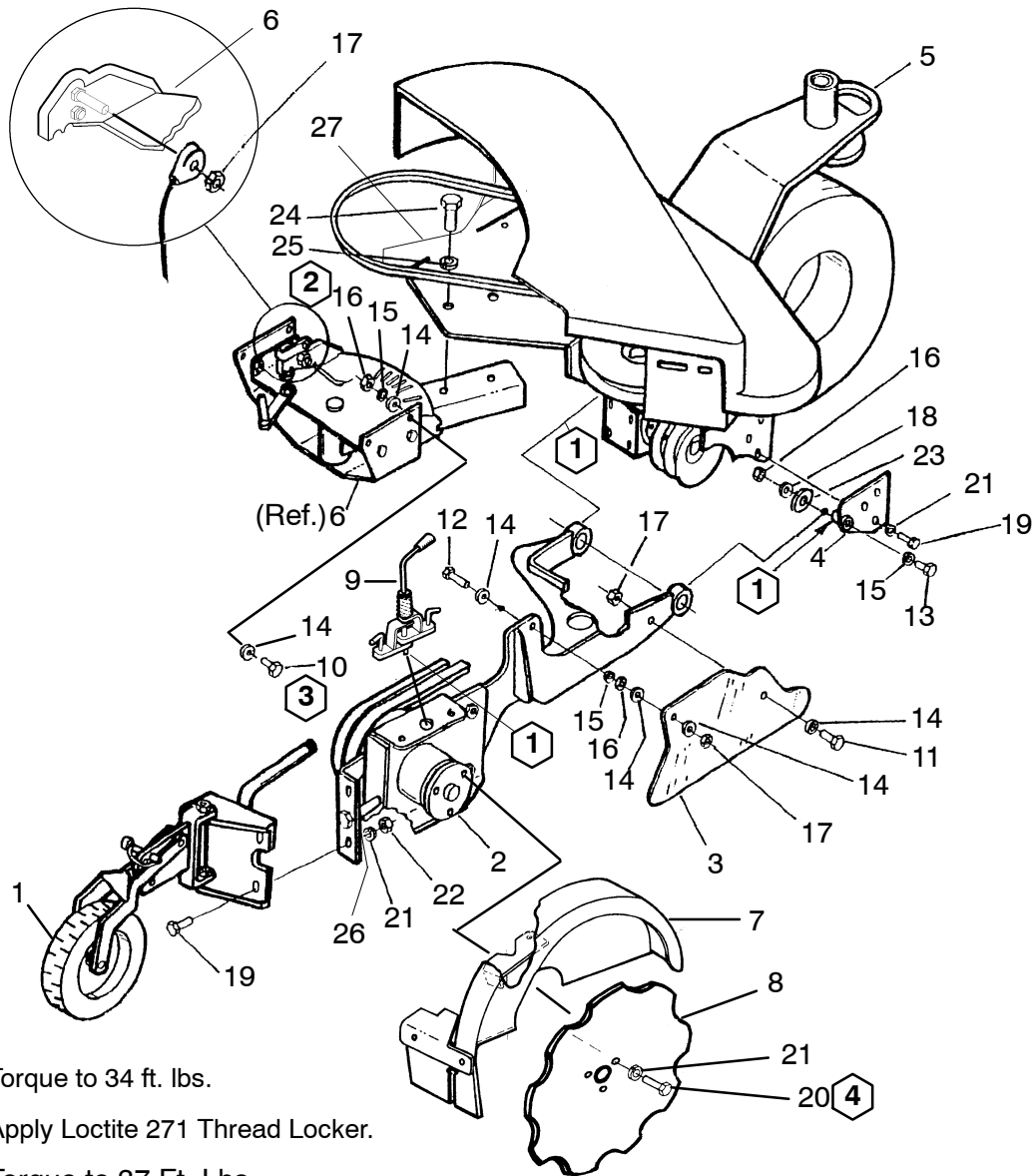
Date: 08-07

Revisions 8/07 JRD

MODEL 1305

Tractor with Diff-Loc A

1305TR1/10-0942



**4** Torque to 34 ft. lbs.

**3** Apply Loctite 271 Thread Locker.

**2** Torque to 37 Ft. Lbs.

**1** Apply Anti-Seize Lubricant.

**Notes:** Mounts to Super Pivot Frame only. All hardware is Grade 5, plated and course thread unless otherwise specified.

27	1	10-1008	Bracket
26	2	10-1221	Washer 3/8 SAE
25	2	NSS	Lock Washer 1/2
24	2	NSS	Hex Bolt 1/2 x 1-1/4
23	1	10-1211	Washer 3/4 SAE .81 x 1.5 x .13
22	2	NSS	Nut 3/8
21	8	NSS	Lock Washer 3/8
20	3	NSS	Hex Bolt 3/8 x 1.25
19	5	NSS	Hex Bolt 3/8 x 1
18	1	10-1104	Washer 5/16 Fender 1-1/4 x .34
17	3	10-1225	Lock Nut 5/16
16	6	NSS	Nut 5/16
15	6	NSS	Lock Washer 5/16
14	12	10-1105	Washer 5/16 USS .37 x .87 x .07
13	1	NSS	Hex Bolt 5/16 x 2
12	1	NSS	Hex Bolt 5/16 x 1-1/2
11	1	NSS	Hex Bolt 5/16 x 1
10	4	NSS	Hex Bolt 5/16 x 1 (GR.8)
9	1	10-0671	Cover Clamp A
8	1	10-0007	16G Disc
7	1	10-0672	G1 Groomer Shield A
6	Ref	10-0665	Sector A
5	1	10-0697	Super Pivot Front A
4	1	10-0563	Support WA
3	1	10-0691	Debris Flap
2	1	10-0668	Arm A
1	1	10-0677	Guage Wheel A
<i>Item</i>	<i>Qty.</i>	<i>Part #</i>	<i>Description</i>

TURF TEQ LLC

Date:12-07

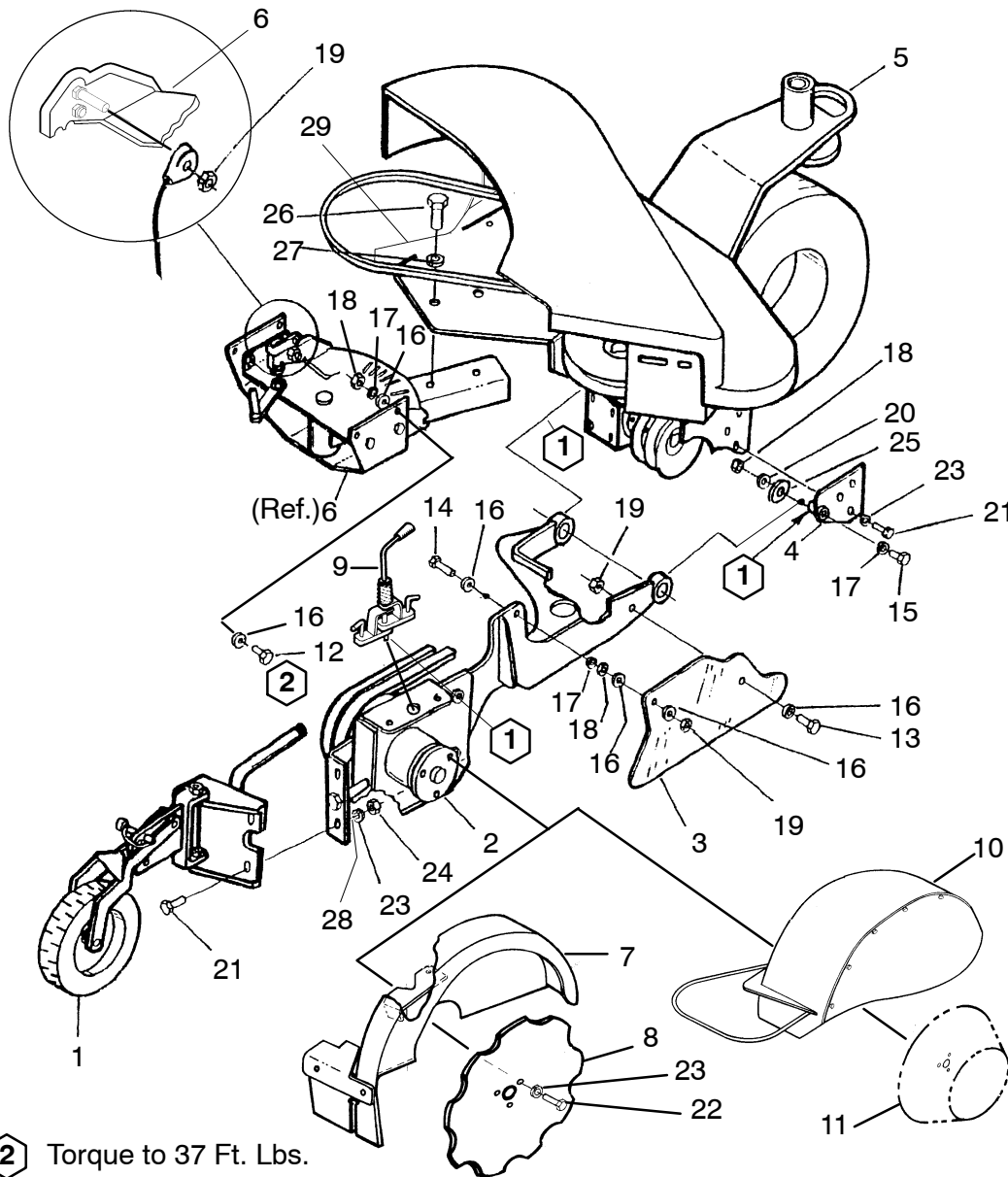
Revisions 12/07 JRD

MODEL 1305

Edger Groomer Attachment

A1300E/10-0943





**2** Torque to 37 Ft. Lbs.

**1** Apply Anti-Seize Lubricant.

**Notes:** Mounts to Super Pivot Frame only. All hardware is Grade 5, plated and course thread unless otherwise specified.

29	1	10-1008	Bracket
28	2	10-1221	Washer 3/8 SAE
27	2	NSS	Lock Washer 1/2
26	2	NSS	Hex Bolt 1/2 x 1-1/4
25	1	10-1211	Washer 3/4 SAE .81 x 1.5 x .13
24	2	NSS	Nut 3/8
23	8	NSS	Lock Washer 3/8
22	3	NSS	Hex Bolt 3/8 x 1.25
21	5	NSS	Hex Bolt 3/8 x 1
20	1	10-1104	Washer 5/16 Fender 1-1/4 x .34
19	3	10-1225	Lock Nut 5/16
18	6	NSS	Nut 5/16
17	6	NSS	Lock Washer 5/16
16	12	10-1105	Washer 5/16 USS .37 x .87 x .07
15	1	NSS	Hex Bolt 5/16 x 2
14	1	NSS	Hex Bolt 5/16 x 1-1/2
13	1	NSS	Hex Bolt 5/16 x 1
12	4	NSS	Hex Bolt 5/16 x 1 (GR.8)
11	1	10-0834	16T Opener Blade WA
10	1	10-0673	G2 Opener Guard A
9	1	10-0671	Cover Clamp A
8	1	10-0007	16G Disc
7	1	10-0672	G1 Groomer Guard A
6	Ref	10-0665	Sector A
5	1	10-0697	Super Pivot Front A
4	1	10-0563	Support WA
3	1	10-0691	Debrui Flap
2	1	10-0668	Arm A
1	1	10-0677	Guage Wheel A
Item	Qty.	Part #	Description

TURF TEQ LLC

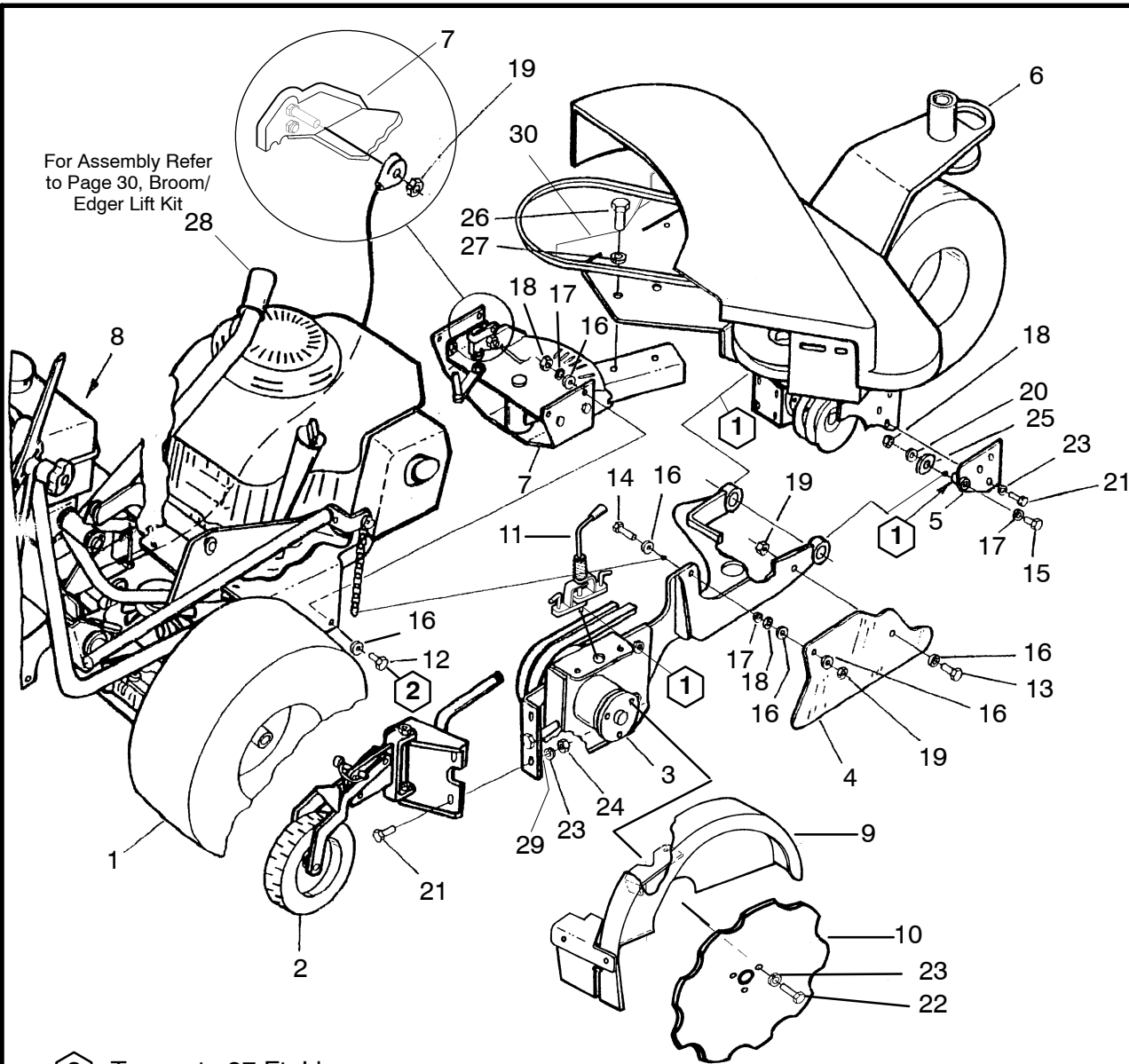
Date: 08-07

Revisions 8/07 JRD

MODEL 1305

Edger Groomer & Op. Attachment

A1300E1/10-0944



2 Torque to 37 Ft. Lbs.

1 Apply Anti-Seize Lubricant.

**Note:** All hardware is Grade 5, plated and course thread unless otherwise specified.

**Super Pivot Frame**

30	1	10-1008	Bracket
29	2	10-1221	Washer 3/8 SAE
28	1	10-0938	Broom/Edger Lift Kit A
27	2	NSS	Lock Washer 1/2
26	2	NSS	Hex Bolt 1/2 x 1-1/4
25	1	10-1211	Washer 3/4 SAE .81 x 1.5 x .13
24	2	NSS	Nut 3/8
23	8	NSS	Lock Washer 3/8
22	3	NSS	Hex Bolt 3/8 x 1.25
21	5	NSS	Hex Bolt 3/8 x 1
20	1	10-1104	Washer 5/16 Fender 1-1/4 x .34
19	3	10-1225	Lock Nut 5/16
18	8	NSS	Nut 5/16
17	8	NSS	Lock Washer 5/16
16	14	10-1105	Washer 5/16 USS .37 x .87 x .07
15	1	NSS	Hex Bolt 5/16 x 2
14	1	NSS	Hex Bolt 5/16 x 1-1/2
13	1	NSS	Hex Bolt 5/16 x 1
12	6	NSS	Hex Bolt 5/16 x 1 (GR.8)
11	1	10-0671	Cover Clamp A
10	1	10-0007	16G Disc
9	1	10-0672	G1 Groomer Guard A
8	1	10-0593	Sidewinder SP Decal
7	1	10-0665	Sector A
6	1	10-0697	Super Pivot Front A
5	1	10-0563	Support WA
4	1	10-0691	Debri Flap
3	1	10-0668	Arm A
2	1	10-0677	Guage Wheel A
1	1	10-0941	1305TR Tractor Only
<i>Item</i>	<i>Qty.</i>	<i>Part #</i>	<i>Description</i>

TURF TEQ LLC

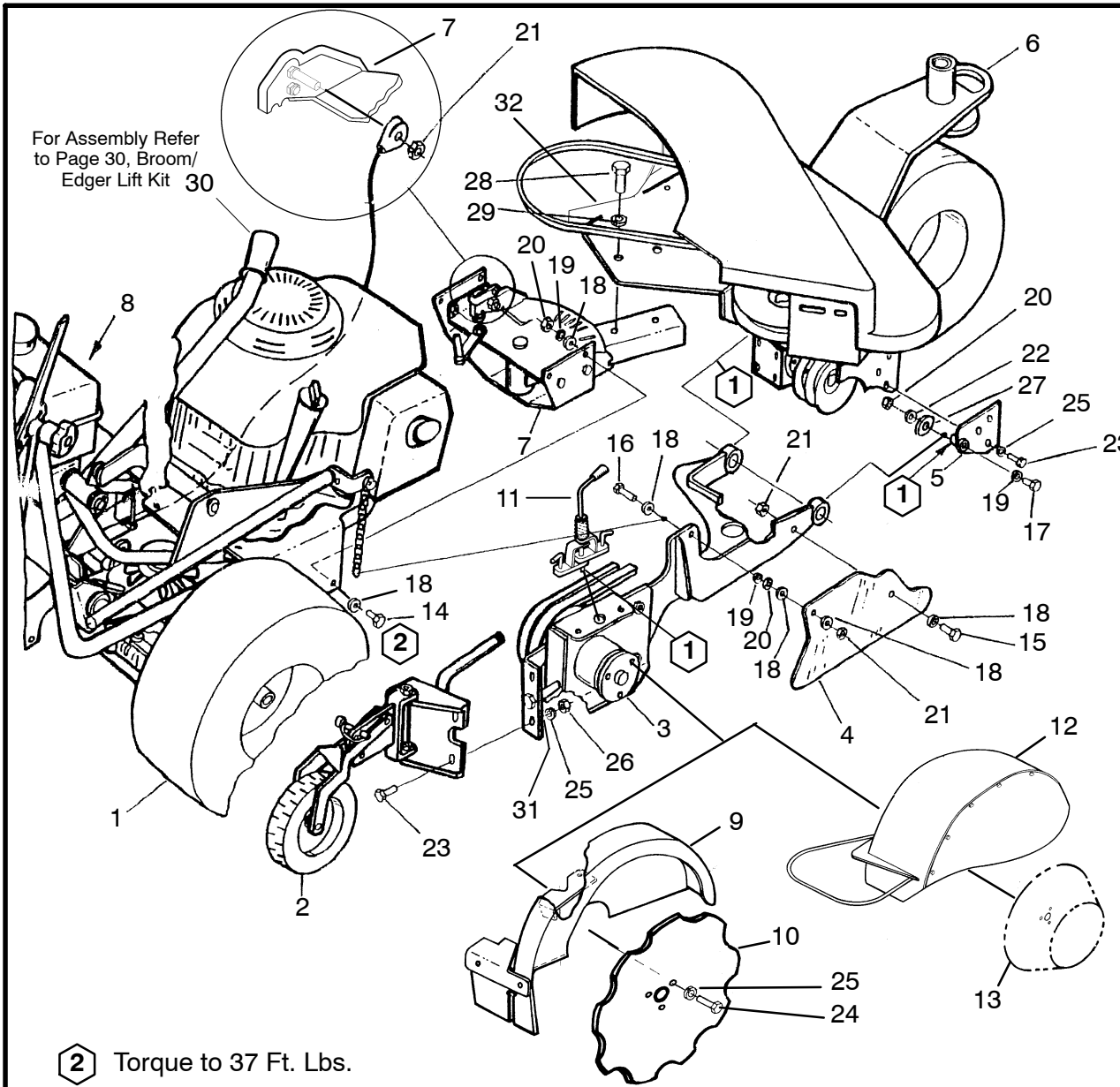
Date: 08-07

Revisions 8/07 JRD

MODEL 1305

Super Pivot A

1305SP/10-0945



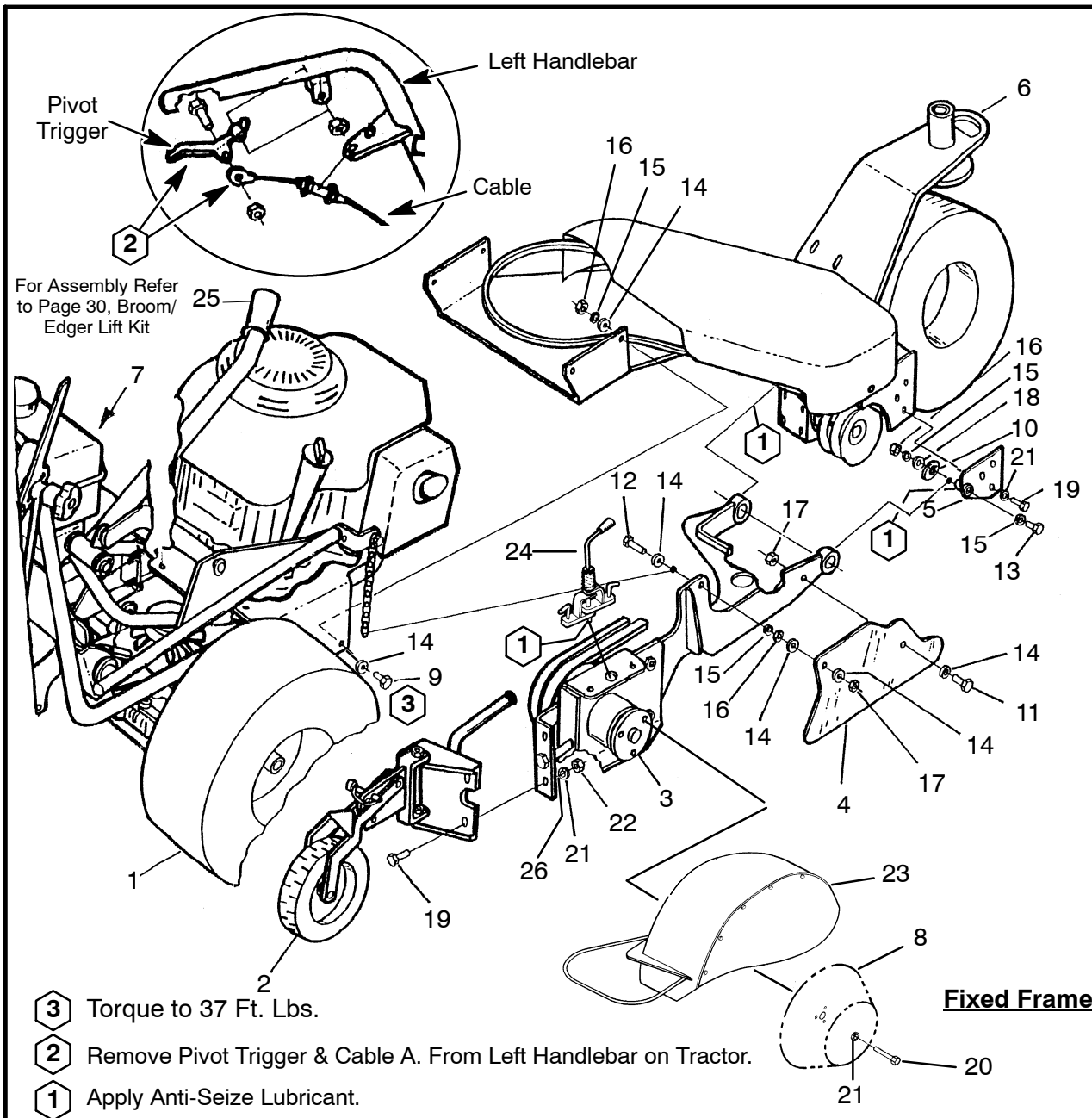
32	1	10-1008	Bracket
31	2	10-1221	Washer 3/8 SAE
30	1	10-0938	Broom/Edger Lift Kit A
29	2	NSS	Lock Washer 1/2
28	2	NSS	Hex Bolt 1/2 x 1-1/4
27	1	10-1211	Washer 3/4 SAE .81 x 1.5 x .13
26	2	NSS	Nut 3/8
25	8	NSS	Lock Washer 3/8
24	3	NSS	Hex Bolt 3/8 x 1.25
23	5	NSS	Hex Bolt 3/8 x 1
22	1	10-1104	Washer 5/16 Fender 1-1/4 x .34
21	3	10-1225	Lock Nut 5/16
20	8	NSS	Nut 5/16
19	8	NSS	Lock Washer 5/16
18	14	10-1105	Washer 5/16 USS .37 x .87 x .07
17	1	NSS	Hex Bolt 5/16 x 2
16	1	NSS	Hex Bolt 5/16 x 1-1/2
15	1	NSS	Hex Bolt 5/16 x 1
14	6	NSS	Hex Bolt 5/16 x 1 (GR.8)
13	1	10-0834	16T Opener Blade WA
12	1	10-0673	G2 Opener Guard A
11	1	10-0671	Cover Clamp A
10	1	10-0007	16G Disc
9	1	10-0672	G1 Groomer Guard A
8	1	10-0593	Sidewinder Decal
7	1	10-0665	Sector A
6	1	10-0697	Super Pivot Front A
5	1	10-0563	Support WA
4	1	10-0691	Debris Flap
3	1	10-0668	Arm A
2	1	10-0677	Gauge Wheel A
1	1	10-0941	1305TR Tractor Only
<i>Item</i>	<i>Qty.</i>	<i>Part #</i>	<i>Description</i>

- 2** Torque to 37 Ft. Lbs.
- 1** Apply Anti-Seize Lubricant.

**Super Pivot Frame**

**Note:** All hardware is Grade 5, plated and course thread unless otherwise specified.

Revisions	8/07 JRD	MODEL 1305	Super Pivot A	TURF TEQ LLC	Date: 08-07
					<b>1305SP1/10-0946</b>



For Assembly Refer to Page 30, Broom/Edger Lift Kit

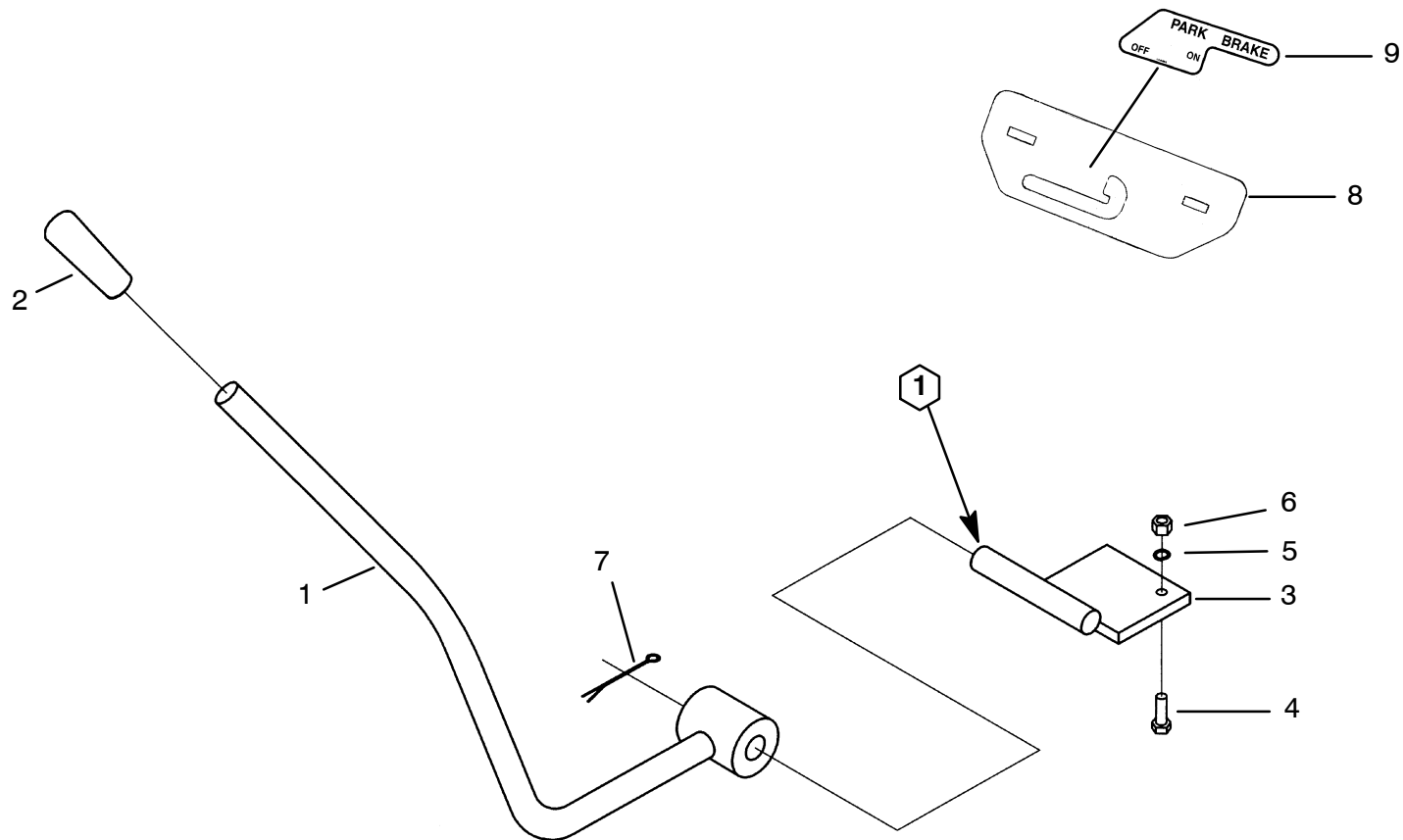
- 3** Torque to 37 Ft. Lbs.
- 2** Remove Pivot Trigger & Cable A. From Left Handlebar on Tractor.
- 1** Apply Anti-Seize Lubricant.

**Note:** All hardware is Grade 5, plated and course thread unless otherwise specified.

26	2	10-1221	Washer 3/8 SAE
25	1	10-0938	Broom/Edger Lift Kit A
24	1	10-0671	Cover Clamp A
23	1	10-0673	G2 Opener Guard A
22	2	NSS	Nut 3/8
21	8	NSS	Lock Washer 3/8
20	3	NSS	Hex Bolt 3/8 x 1.25
19	5	NSS	Hex Bolt 3/8 x 1
18	1	10-1104	Washer 5/16 Fender 1-1/4 x .34
17	2	10-1225	Lock Nut 5/16
16	8	NSS	Nut 5/16
15	8	NSS	Lock Washer 5/16
14	14	10-1105	Washer 5/16 USS .37 x .87 x .07
13	1	NSS	Hex Bolt 5/16 x 2
12	1	NSS	Hex Bolt 5/16 x 1-1/2
11	1	NSS	Hex Bolt 5/16 x 1-1/4
10	1	10-1211	Washer 3/4 SAE .81 x 1.5 x .13
9	6	10-1228	Hex Bolt 5/16 x 1 (GR.8)
8	1	10-0834	16T Opener Blade WA
7	1	10-0436	Sidewinder Decal
6	1	10-0698	Sidewinder Fixed Front A
5	1	10-0563	Support WA
4	1	10-0691	Debri Flap
3	1	10-0668	Arm A
2	1	10-0677	Guage Wheel A
1	1	10-0941	1305TR Tractor Only
<i>Item</i>	<i>Qty.</i>	<i>Part #</i>	<i>Description</i>

**TURF TEQ LLC** Date: 08-07

Revisions	8/07 JRD	MODEL 1305	Fixed Frame A	1305/10-0947
-----------	----------	------------	---------------	--------------



**Optional Equipment**

① Apply Anti-Seize Lubricant.

**Note:** All hardware is Grade 5, plated and course thread unless otherwise specified.

9	1	10-0888	Decal
8	1	10-0803	Plate
7	1	10-1210	Cotter Pin 3/32 x 3/4
6	1	NSS	Nut 3/8
5	1	NSS	Lock Washer 3/8
4	1	NSS	Hex Bolt 3/8 x 1
3	1	10-0760	Base WA
2	1	10-0332	Handle Grip
1	1	10-0758	Lever WA
<i>Item</i>	<i>Qty.</i>	<i>Part #</i>	<i>Description</i>

**TURF TEQ LLC**

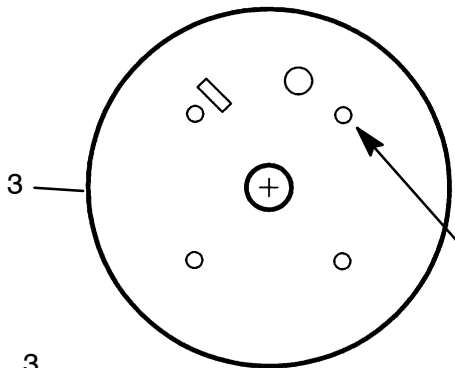
Date: 07-07

Revisions 7/07 JRD

MODEL 1305

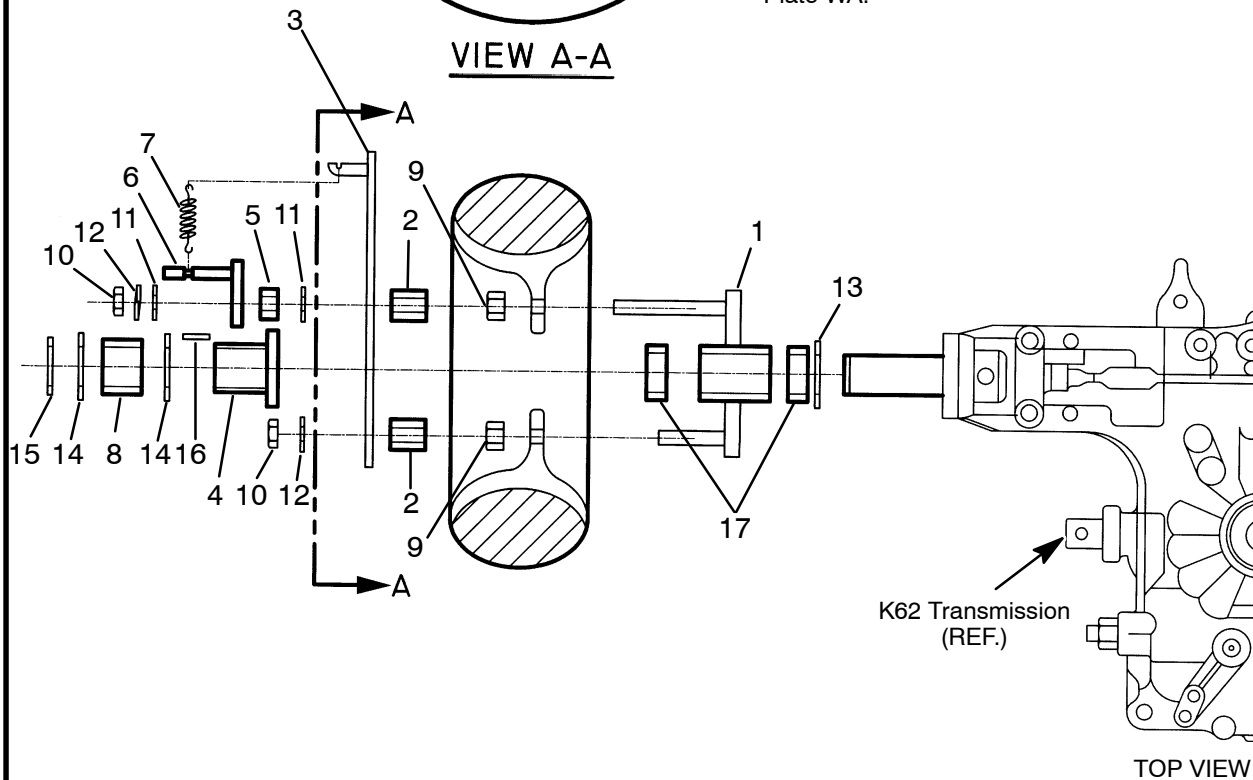
**Park Brake Kit A**

**K1305PB/10-0934**



**NOTE:** The longest threaded rod on Item #1 Wheel-Loc Hub, goes through this hole on Item #3 Plate WA.

**VIEW A-A**



**Optional Equipment**

17	2	10-0104	Bushing 1 x 1.25 x 1
16	1	10-1116	Key 1/4 x 1.25
15	1	10-1113	E-Clip 1"
14	2	10-1110	Washer 1" Machine 1 x 1.5 x .07
13	1	10-1217	Washer 1 SAE
12	4	NSS	Lock Washer 1/2
11	2	10-1106	Washer 1/2 Machine 1/2 x 7/8 x .07
10	4	10-1218	Jam Nut 1/2" Fine Thread
9	4	10-1219	Lug Nut 1/2" Fine Thread
8	1	10-0875	Spacer
7	1	10-0877	Spring C-137
6	1	10-0879	Engagement WA
5	1	10-0843	Spacer
4	1	10-0871	Wheel Engagement Hub WA
3	1	10-0921	Plate WA
2	4	10-0876	Spacer
1	1	10-0874	Wheel-Loc Hub
<i>Item</i>	<i>Qty.</i>	<i>Part #</i>	<i>Description</i>

**Note:** All hardware is Grade 5, plated and course thread unless otherwise specified.

**TURF TEQ LLC**

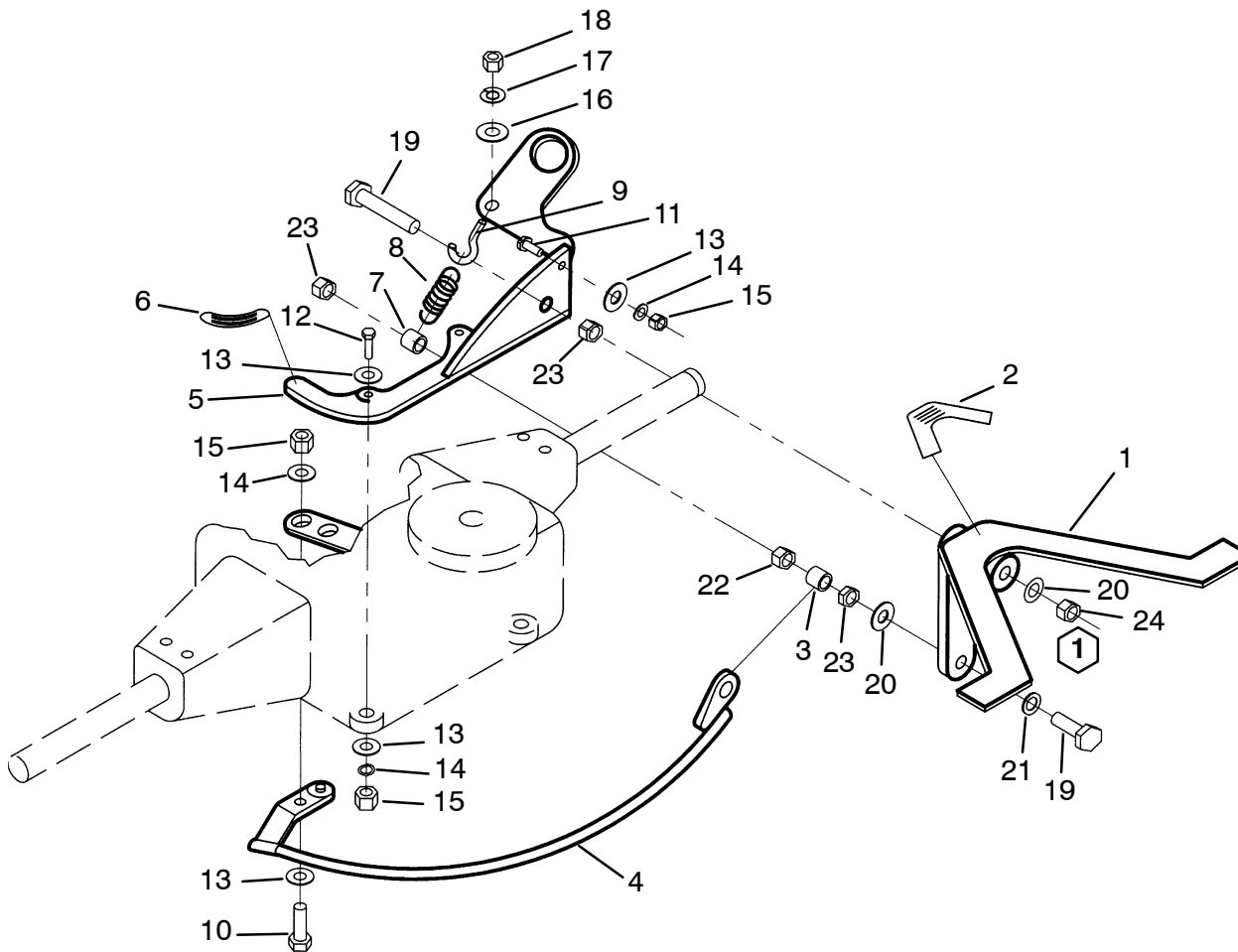
Date: 07-07

Revisions 7/07 JRD

MODEL 1305

**Wheel-Loc Kit A**

**K1305WL/10-0936**



**Note:** Items 5, 6, 11, 12, 13, 14, and 15 are standard on all machines and are not part of the optional kit.

24	1	10-1220	Lock Nut 1/2
23	3	10-1204	Jam Nut 1/2
22	1	NSS	Nut 1/2
21	1	NSS	Lock Washer 1/2
20	2	10-1106	Washer 1/2 Machine 1/2 x 7/8 x .07
19	2	NSS	Hex Tap Bolt 1/2 x 3
18	1	NSS	Nut 3/8
17	1	NSS	Lock Washer 3/8
16	1	10-1221	Washer 3/8 SAE
15	4	NSS	Nut 5/16
14	5	NSS	Lock Washer 5/16
13	5	10-1214	Washer 5/16 SAE
12	2	NSS	Hex Bolt 5/16 x 2.25
11	1	NSS	Carr Bolt 5/16 x 1
10	1	NSS	Hex Bolt 5/16 x 1
9	1	10-0757	Eyebolt 3/8 x 4
8	1	10-0756	Spring
7	1	10-0843	Spacer
6	1	10-0884	Decal
5	1	10-0818	Mount WA
4	1	10-0867	Arm WA
3	1	10-0883	Bushing
2	1	10-0885	Decal
1	1	10-0817	Arm WA
<i>Item</i>	<i>Qty.</i>	<i>Part #</i>	<i>Description</i>

**1** Install nut so there is 1/16" gap between 20 and 24.

### Optional Equipment

**Note:** All hardware is Grade 5, plated and course thread unless otherwise specified.

TURF TEQ LLC

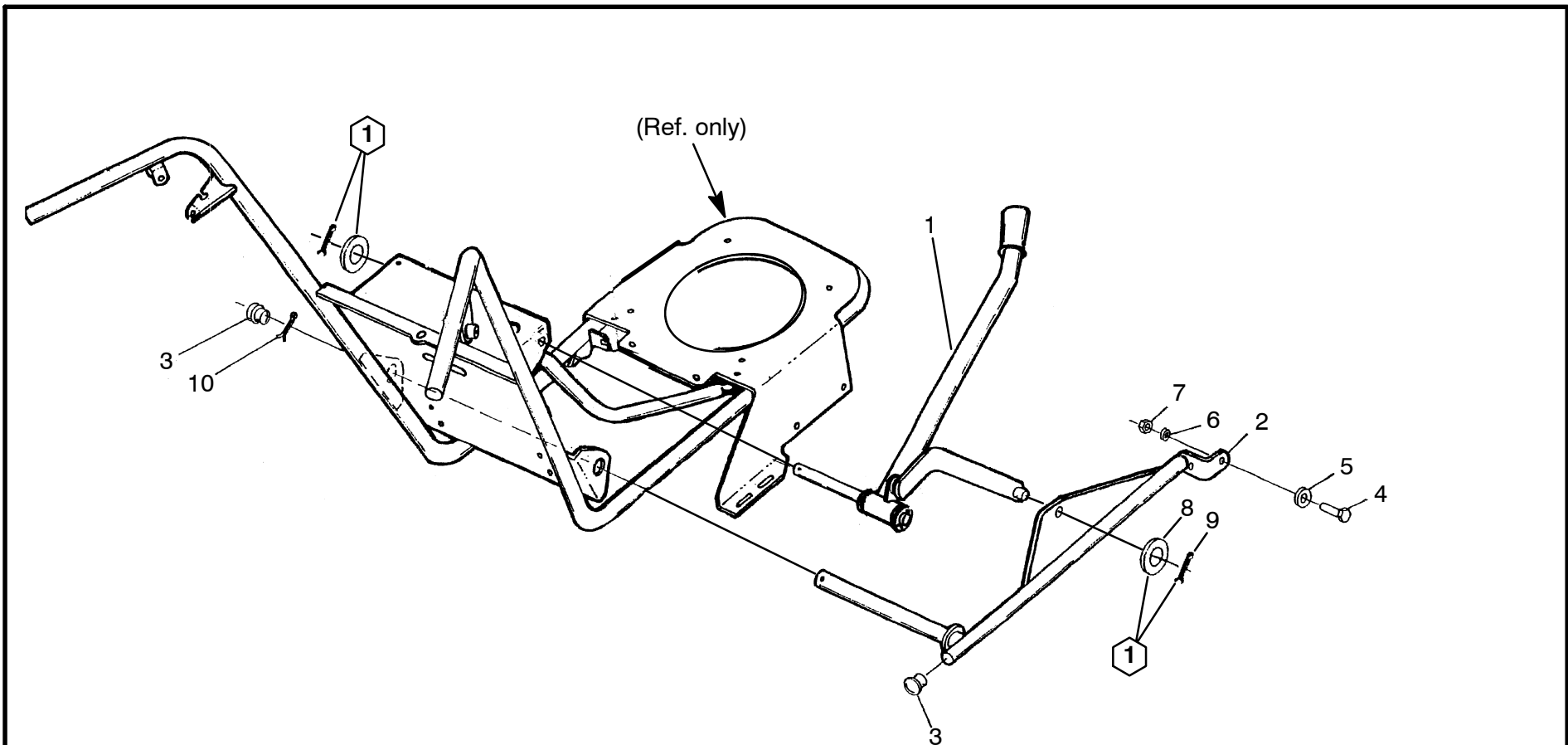
Date:12-07

Revisions 12/07 JRD

MODEL 1305

Differential-Loc Kit A

K1305DL/10-0937



**1** Supplied With Lift Arm (Item #1).

**Note:** All hardware is Grade 5, plated and course thread unless otherwise specified.

10	1	10-1222	Cotter Pin 1/8 x 1-3/4
9	1	10-1223	Cotter Pin 1/8 x 3/4
8	1	10-1224	Washer 5/8 SAE 1.31 x .65 x .09
7	1	NSS	Nut 5/16
6	1	NSS	Lock Washer 5/16
5	1	10-1214	Washer 5/16 SAE
4	1	NSS	Hex Bolt 5/16 x 1
3	2	10-0354	End Plug
2	1	10-0341	Lift Arm WA
1	1	10-0680	Lift Arm A
<i>Item</i>	<i>Qty.</i>	<i>Part #</i>	<i>Description</i>

<b>TURF TEQ LLC</b>		Date: 07-07
Revisions	7/07 JRD	MODEL 1305
<b>Broom/Edger Lift Kit A</b>		<b>K1305LK/10-0938</b>