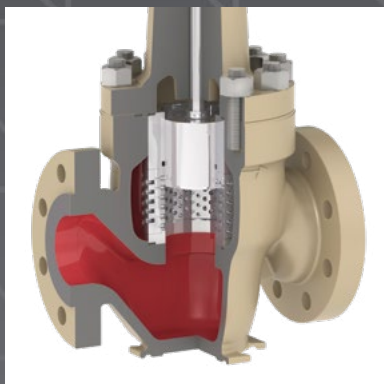


SAMSON SOLUTIONS



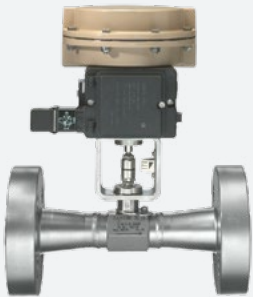
Intelligent Valve Engineering from a Single Source

LINEAR VALVES



Top Guided Globe Control (240, 250, 290 Series)

Top guided linear globe valves are the most common type of valve used for control due to their superior control performance. SAMSON offers a compact, modular design for practically any application.



Microflow Control Valves

Microflow valves are designed to perform precise control at extremely low flow rates.



Axial Flow Valves

Axial flow valves combine the benefits of a quarter-turn actuation and axial flow path with the excellent control of a linear stroke motion. These valves have an increased flow capacity compared with a traditional globe and are typically employed in larger, high-flow applications.



Cage Guided Globe Control (590 Series)

Cage guided globe valves are used for high pressure control applications, utilizing a robust guiding system to provide maximum stability of internal components, even under the most extreme conditions.



Severe Service Solutions

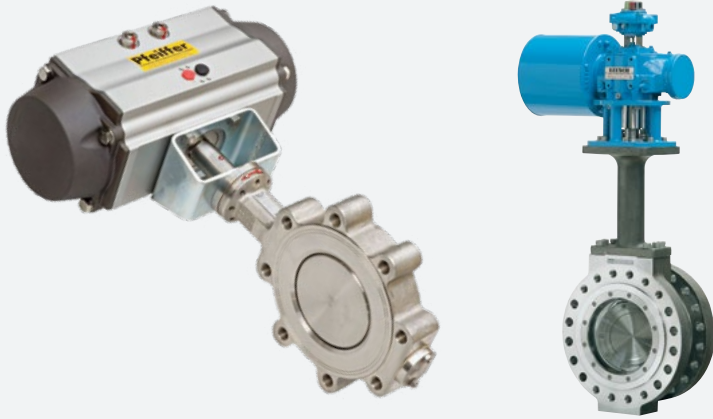
Severe service refers to challenging control valve applications such as critical cavitation, flashing, and two-phase flows. SAMSON offers a variety of different solutions to mitigate the negative effects of these phenomena to maximize valve life.



Self-Operated Regulators

Regulators utilize a direct connection to the process to control flow without the requirement for any external signal. SAMSON offers a wide range of regulators to control pressure, temperature, or process differential pressure.

QUARTER-TURN VALVES

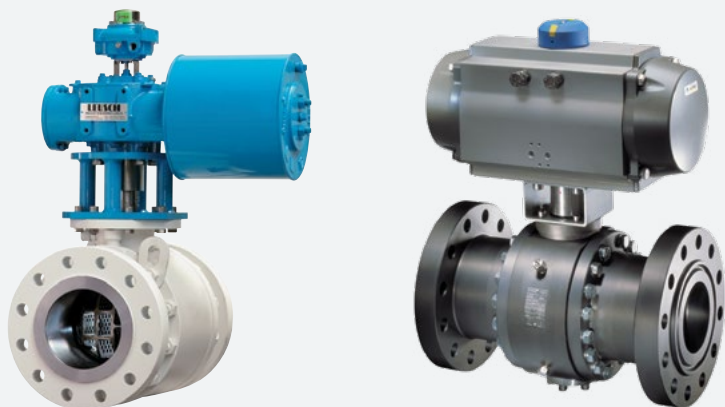
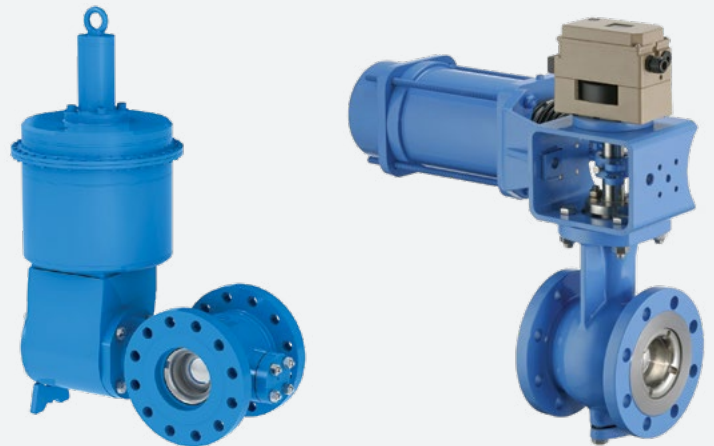


Butterfly Valves

Butterfly valves, known for their high flow capacity and compact design, are commonly used for both control and isolation applications. SAMSON offers a variety of double and triple offset designs, as well as special low noise reduction options.

Eccentric Rotary Plug Valves

Also commonly referred to as a rotary globe valve, the eccentric rotary plug valve employs a double offset design to provide superior control, while also offering a much higher flow capacity than a traditional globe valve. The SAMSON rotary plug valves are available with various trim designs, noise attenuation options, and tungsten carbide or ceramic liners for aggressive slurries.



Ball Valves

Our line of high quality ball valves include designs for both control and on/off applications. The segmented ball valve is used for standard applications where a high flow capacity is desired. Valves for on/off applications are available with cast or forged bodies, and in floating or trunnion mounted designs to meet the demands of a variety of service conditions.

APPLICATION SPECIFIC VALVES



Top Entry Control Valves

Top entry valves are used in cryogenic applications to allow direct access to valve trim while also offering a fully welded design.



Steam Conditioning Valves

Steam conditioning valves combine traditional water injection desuperheating for steam temperature reduction with a pressure reducing control valve to provide superior performance in a compact design.



Hygienic/Aseptic Valves

Angle seated globe control valves for precise process control in both hygienic and aseptic systems. Compliant with FDA, 3A, EHEDG, and USP CL VI specifications for a wide variety of applications.



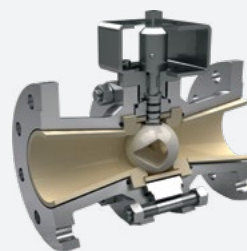
PTFE/PFA Lined Valves

SAMSON offers PTFE/PFA lined globe, butterfly, ball, and eccentric plug valves used for control and isolation of extremely corrosive media.



Diaphragm Valves

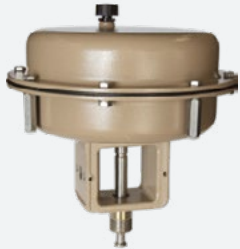
Our diaphragm valves are manufactured to current industry standards and meet the demanding process requirements of the food and beverage, pharmaceutical, bio-processing, and cosmetics industries where contamination risks pose a serious problem to the final product.



Ceramic Lined Valves

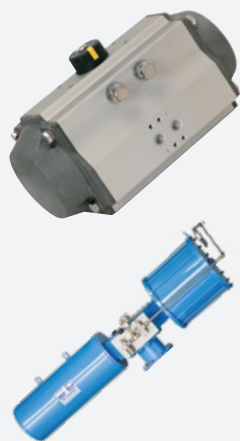
Ceramics are very hard materials that generally provide very good resistance to both abrasion and corrosion. SAMSON offers ceramic lined ball and sliding disc valves for extreme applications where traditional metallic valves cannot hold up to the application.

ACTUATORS & ACCESSORIES



Linear Pneumatic Actuators

Our multi-spring actuator provides a lightweight and compact design, the unique rolling diaphragm offers precise control and an exceptionally long life even through high cycle counts.



Quarter-turn Pneumatic Actuators

SAMSON is a leader in pneumatic rotary actuators which convert a linear motion into a smooth rotary movement for all kinds of rotary or quarter-turn valves.

Technical highlights include actuators with external travel stop adjustment, the robust gearing of rack and pinion actuators, rolling diaphragms for precise control, and scotch yoke designs for large valve sizes.



Electric/Electro-Hydraulic

Powered by 24V AC/DC or 120VAC, electric actuators are frequently used when a pneumatic source is unavailable or undesirable (HVAC, clean rooms, etc.).

Configurable with limit switches, diagnostics, manual override, and three-step or integrated 4-20mA positioners.



Positioners

Our positioners are designed to enhance the performance and reliability of any valve in process control applications. Available in pneumatic, electro-pneumatic (4-20mA), HART, Foundation Fieldbus, and Profibus.



Solenoid Valves

SAMSON's line of solenoid valves offers a reliable option for pneumatic switching applications with the added benefit of minimal power consumption.

Available in a wide variety of configurations including 3/2, 5/2, 5/3 or 6/2-way to suit any application.



Other Accessories

When combined with our extensive line of control and on/off valves, limit switches, volume boosters, lock-up valves, and other accessories enhance the operation and functionality of process control equipment. The end result is an engineered solution designed to maximize uptime and reduce operating costs, allowing plants to continue running effectively with minimal interruption.

INTELLIGENT VALVE ENGINEERING

SAMSON

AIR TORQUE · CERA SYSTEM · KTELEKTRONIK · LEUSCH
PFEIFFER · RINGO · SAMSOMATIC · SED · STARLINE · VETEC

SAMSON's technology has proven its value worldwide in a variety of industries. We are trusted in many of the world's most challenging applications to achieve precise control with a high level of safety and reliability.

We offer engineered solutions from a single source. With our extensive range of valves, actuators, and accessories we have the right products to suit your requirements. Our linear and rotary control valves equipped with

SAMSON positioners allow seamless integration into process control systems.

Continuous investment in research and development allows us to stay at the cutting edge of technology. With over 100 years of experience and expertise, you can count on SAMSON to provide a robust solution for your application.

SAMSON

AIR TORQUE · CERA SYSTEM · KTELEKTRONIK · LEUSCH
PFEIFFER · RINGO · SAMSOMATIC · SED · STARLINE · VETEC

4111 Cedar Blvd.
Baytown, TX 77523 USA
Phone: 877-762-7668

1-105 Riviera Drive
Markham, ON L3R 5J7 Canada
Phone: 800-772-6766



www.samsoncontrols.com



contactus@samsongroupna.com