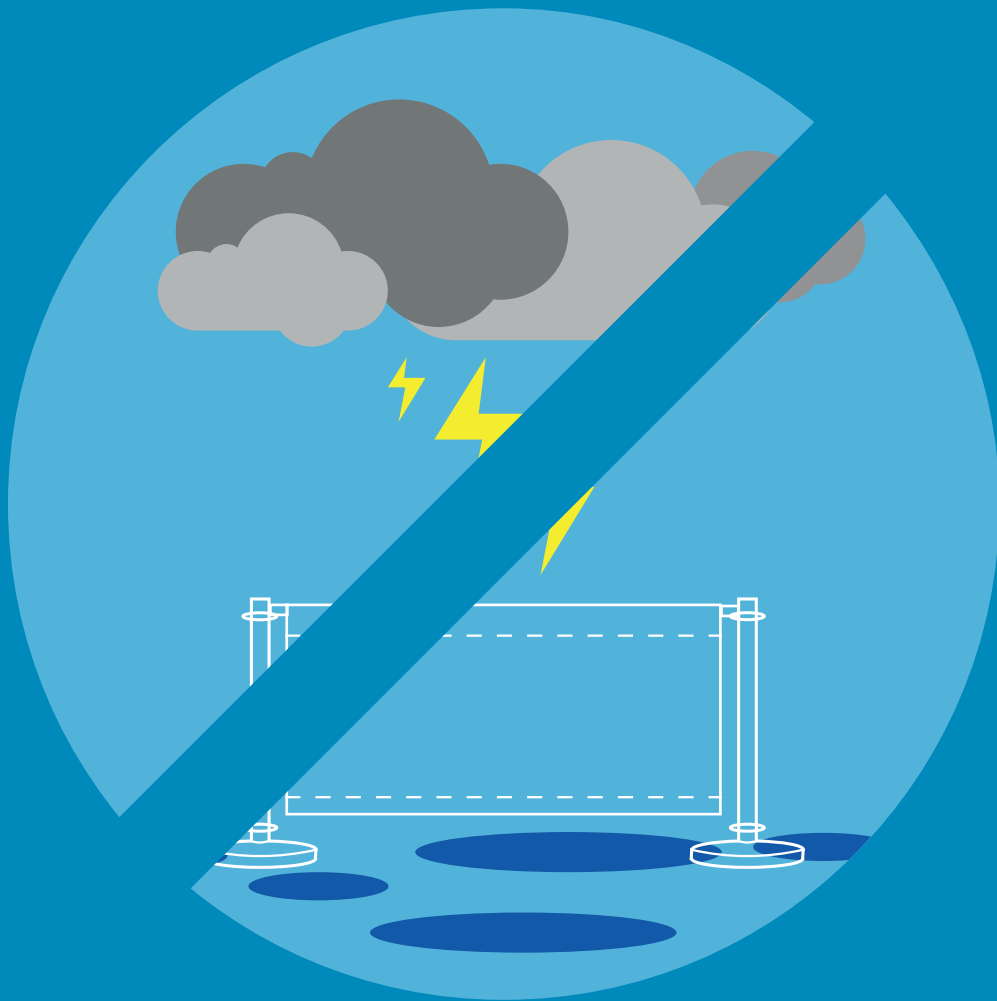


Outdoor
Display.



DO NOT leave your cafe barriers out during periods of inclement weather as this could result in damage.

**Outdoor
Display.**



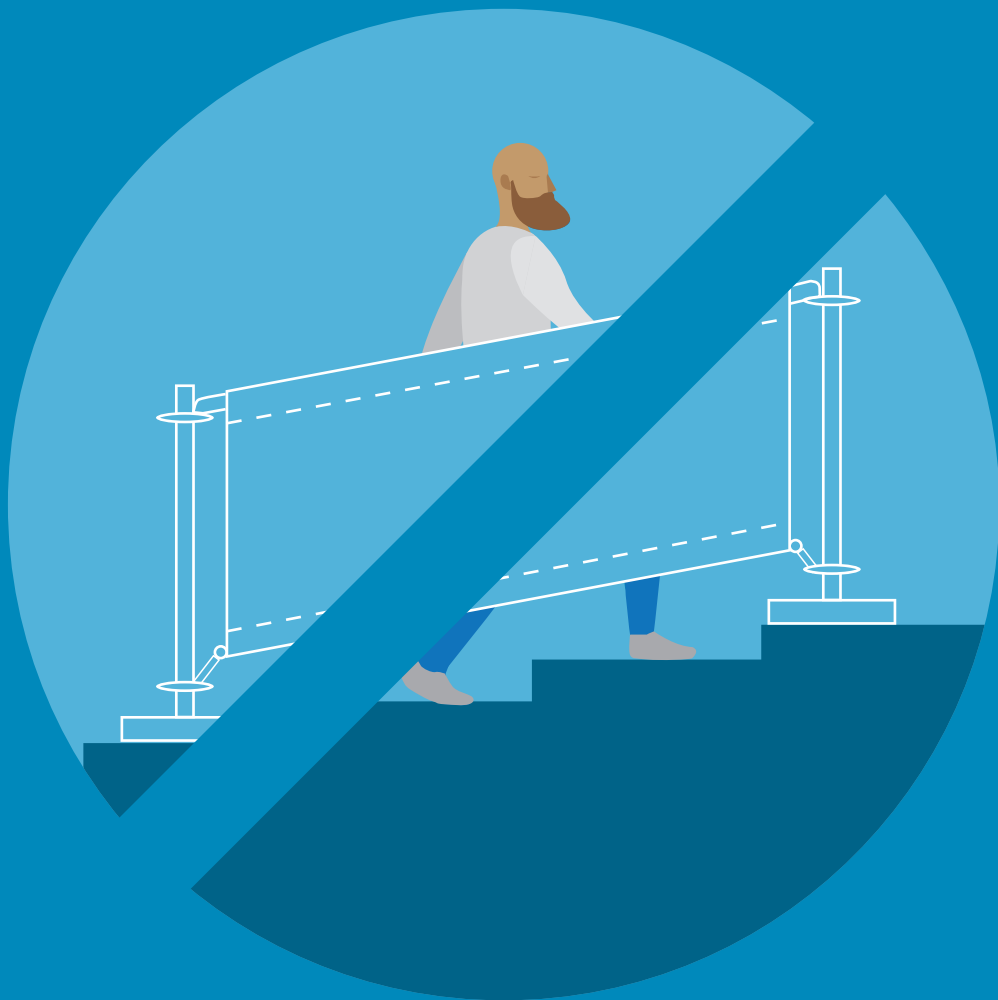
DO NOT use your café barriers in windy conditions as this could result in injury or damage to the barriers.

Outdoor
Display.



DO NOT lean, sit or stand on the café barriers, this could result in damage to the barriers and injury to yourself or others.

Outdoor
Display.



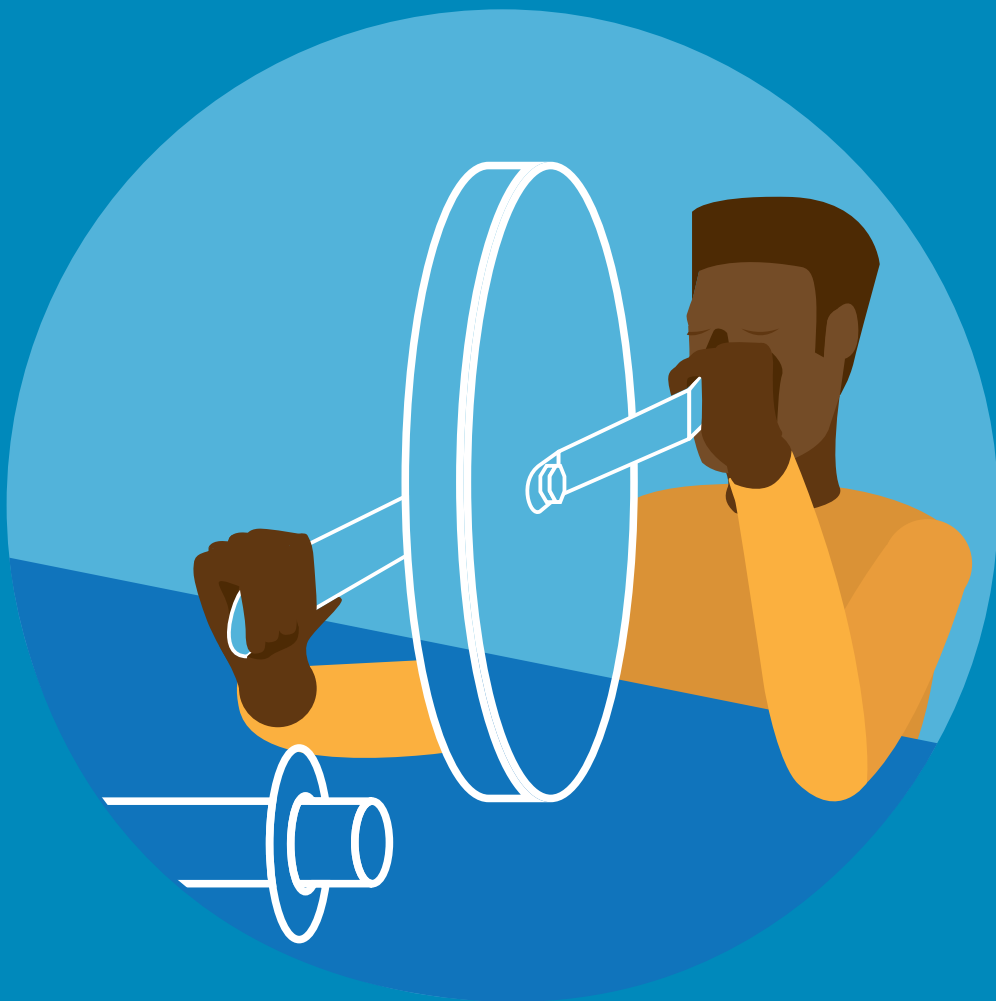
DO NOT position your cafe barriers on uneven, loose or multi-levelled surfaces.

Outdoor
Display.



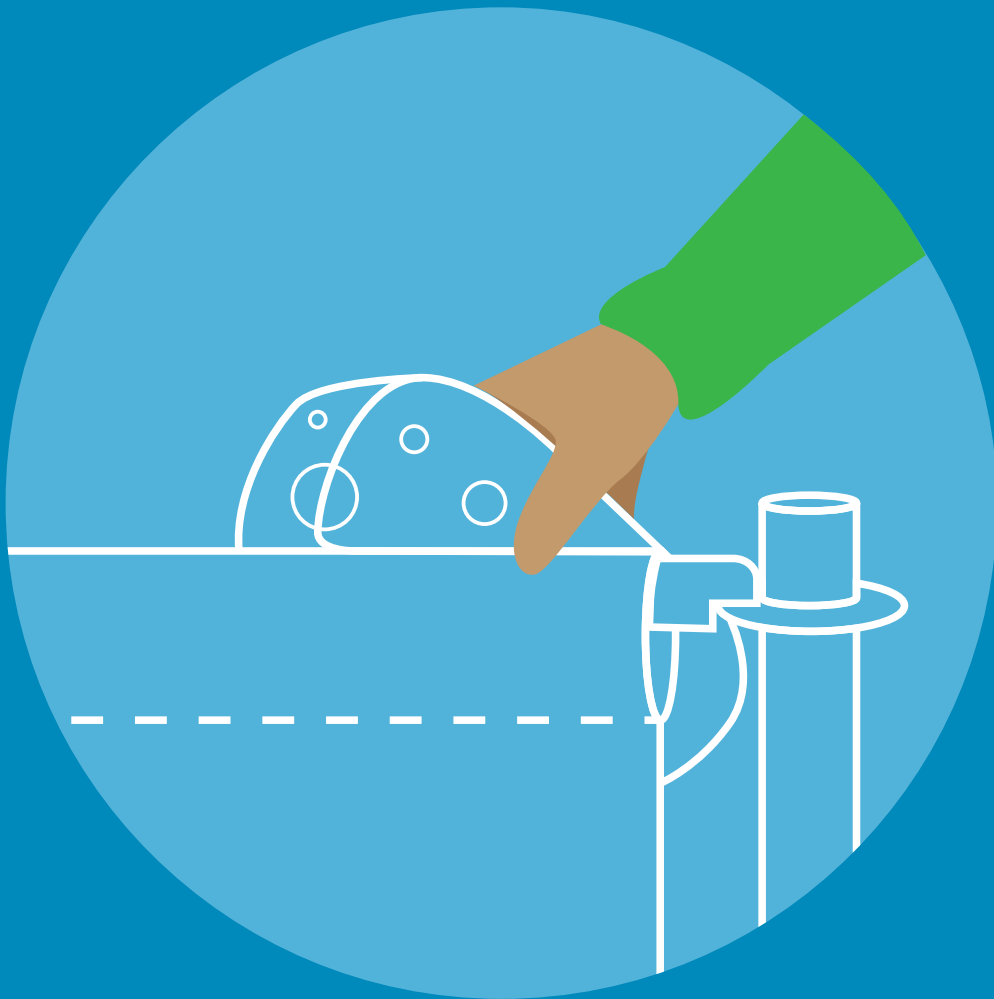
DO NOT use abrasive agents or solvent as they may harm the finish of the barriers.

Outdoor
Display.



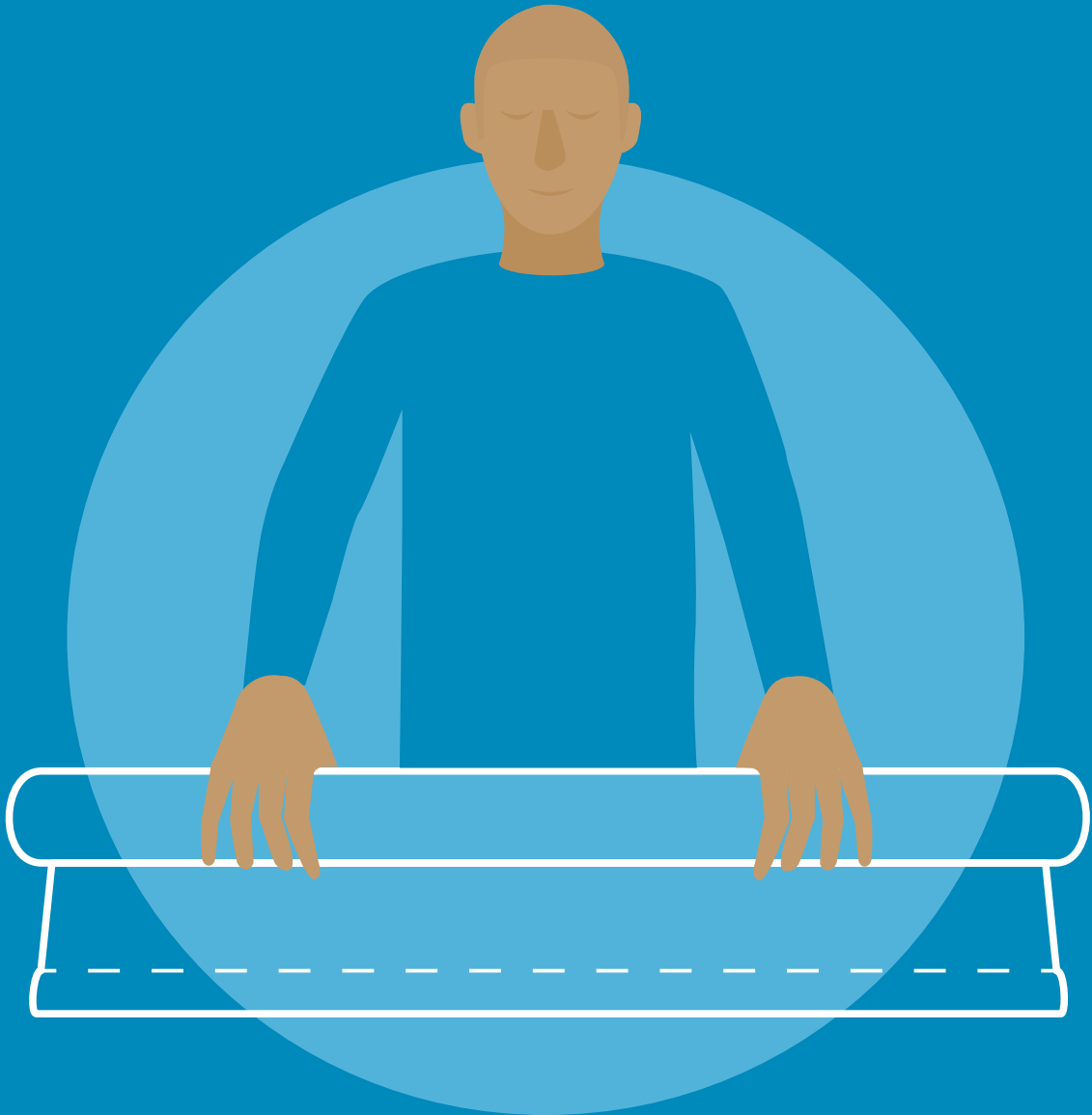
When tightening the posts, please refer to the instructions and use the tools provided to avoid damage.

Outdoor
Display.



DO use a soft cloth or sponge with warm water and where necessary a mild detergent to clean your café barriers.

Outdoor
Display.



Always roll the banners from top to bottom
and ensure that they are fully dry before
storing them.