

Creating the perfect image for OKI Printing Solutions



Boardroom table:
24 person maple veneer top with contrasting oak veneer centre inlay and oak hardwood edge lipping with 10 suited cable access panels concealing extensive integrated power and data comms.

"With Clarke Rendall, the quality of product is excellent, but for me it's the quality of service that sets them apart - to them, nothing is a problem."

CBS

"The successful partnership between CBS and Clarke Rendall has created for OKI a boardroom with an extremely productive atmosphere.

People are looking forward to the opportunity of using this excellent new resource"

OKI



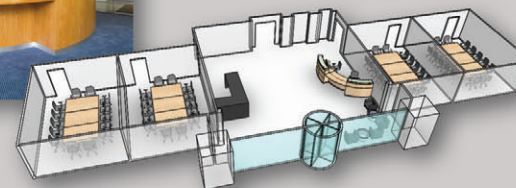
Training room tables:
Maple veneer tops with contrasting oak hardwood edge lipping and power docks.



Break-out area tables:
Maple laminate tops with oak PVC edging on chrome trumpet bases



Reception Desk:
Colour matched oak veneer evolution® eclipse special (based on the YBP-2DDA-FP standard product)



Boardroom suited meeting room tables: Maple veneer tops with contrasting oak veneer centre inlay and oak hardwood edge lipping and suited cable access panels

Download all images from this case study

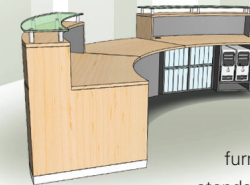
A major aspect of **OKI Printing Solutions'** business revolves around producing a consistently high quality image for its customers, and when **OKI** needed to create a fresh new image for its own new **European Head Offices** in Egham, they turned to Ascot based **CBS** for inspiration.

With **over 11,000 sq ft spread over 2 floors**, this was a substantial project by any standard and CBS were confident from the outset that they wanted **Clarke Rendall** to handle the bespoke furniture element.

A free flow of information based on mutual trust and respect ensured CBS could take advantage of **Clarke Rendall's** design development expertise and high quality 3d presentation materials. This assistance was fundamental in ensuring that both CBS and OKI would be totally comfortable with how things would shape up before the work started in earnest.

"We have a long standing relationship with Clarke Rendall, but this time they really excelled themselves". As with any project of this scale, there were a host of challenges to overcome, and CBS were highly impressed by **Clarke Rendall's** commitment, flexibility and capacity to *"think way outside the box"* in trying to resolve

last minute issues. *"To them, nothing was a problem, I can't praise them enough in all aspects".*



For more information on **Clarke Rendall** bespoke business furniture and also the **evolution®** range of standard products, call today on **01908 391600** or visit our comprehensive website.

Clarke Rendall's contribution to the project

- Boardroom Table
- 4 Training Rooms Tables
- Reception Desk
- Break-Out Area Tables
- 2 Meeting Rooms Tables

