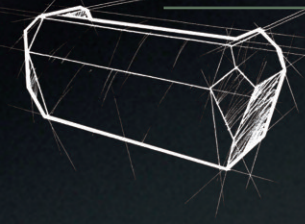
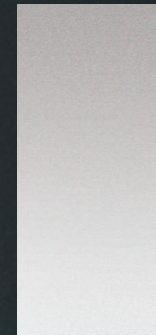
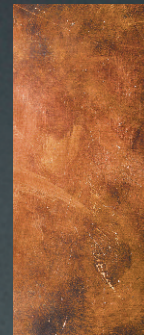
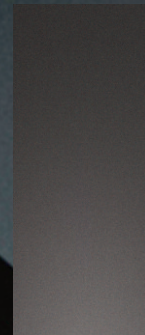


invite



share



Clarke Rendall STUDIO

Designs in DuPont™ CORIAN®

# invite

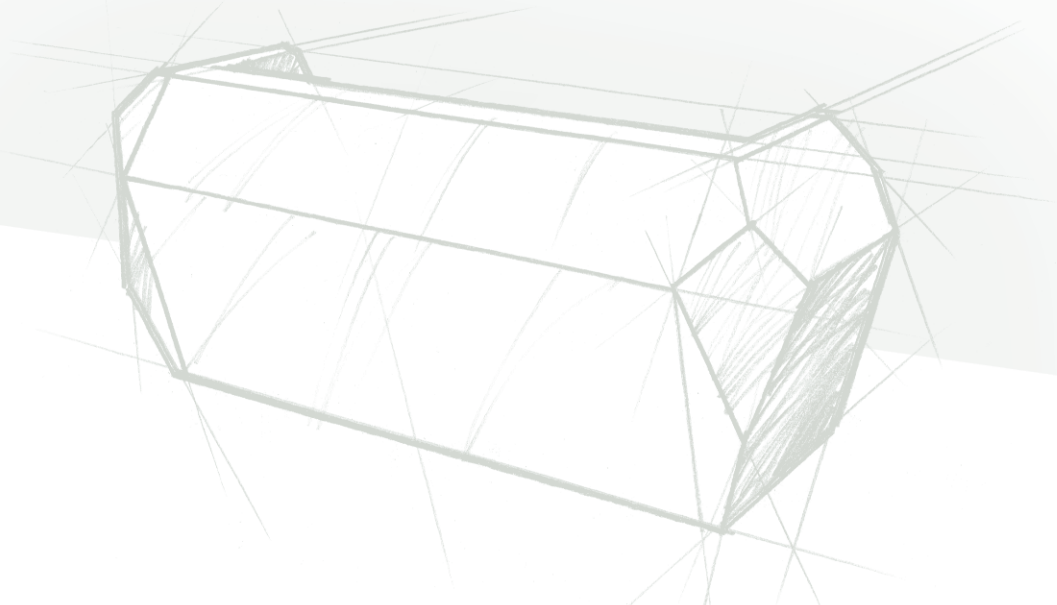
---

At Clarke Rendall STUDIO, our design focused creative hub, we have created the future in Corian® reception desk specification. Exclusive products to complement a huge range of interiors.

invite is a cutting edge, faceted, standard product reception desk like no other. The bold innovative geometric styling offers a truly unique aesthetic with echoes of a crystalline formation and the purity and appeal of a cut diamond.

The clarity of thinking extends to the finishes, with invite available as standard across the board in the sheer unbroken lustre of Corian® including the very latest in DeepColour™ technology.

Each model is constructed from a number of reconfigurable sections selected to achieve the ideal desk design and size for your space, without incurring the additional costs of a bespoke solution.



invite

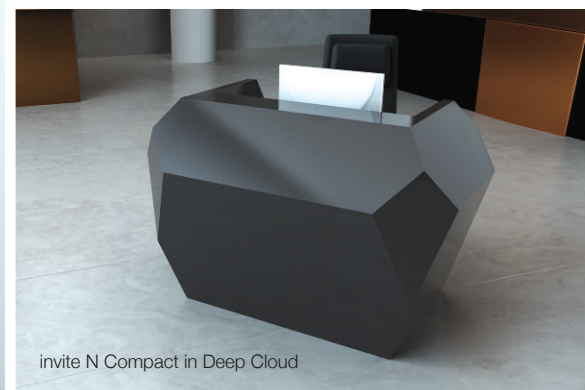


Clarke Rendall STUDIO

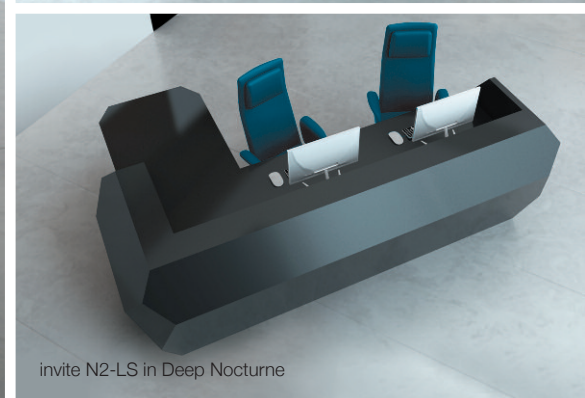
Designs in DuPont™ CORIAN®



invite N2 in Glacier White



invite N Compact in Deep Cloud



invite N2-LS in Deep Nocturne



invite N1-L in Glacier White

invite N1 in Glacier White

# share

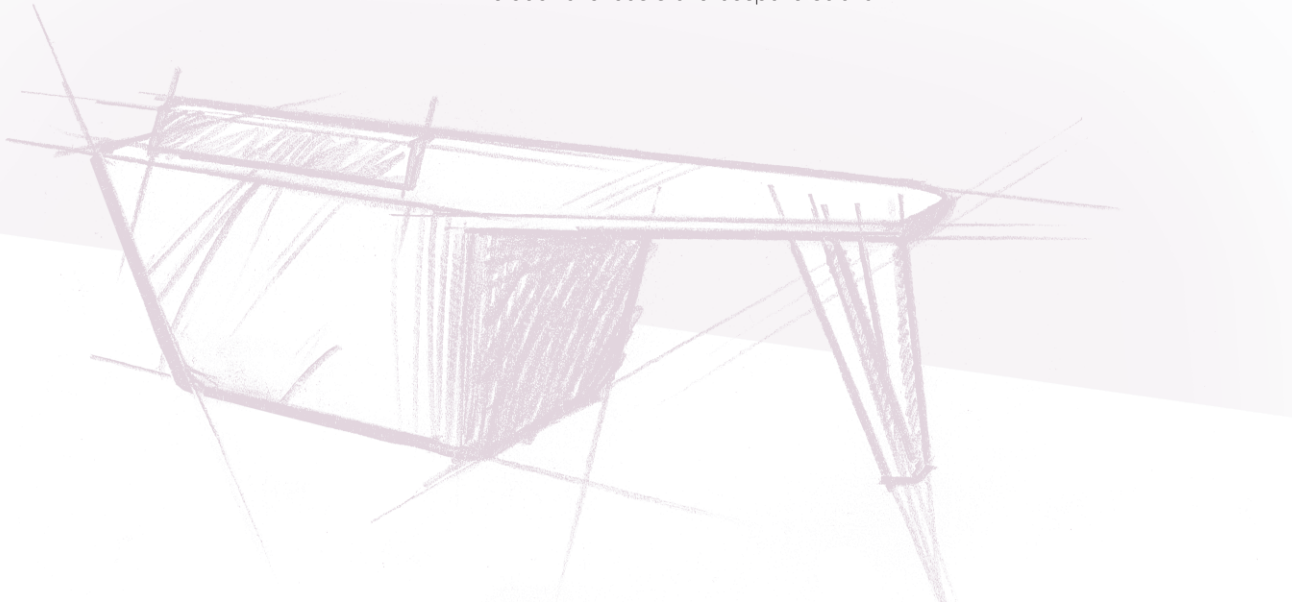
---

At Clarke Rendall STUDIO, the design focused creative hub of Clarke Rendall, we have taken several years experience in creating conical Corian® reception desks and architectural metalwork features to bring you share, a revolutionary standard product.

The pristine simplicity in the shape and style of share is complemented by a bold, dynamic choice of Brass, Steel and Copper to the feature metalwork up-stands and iconic leg frame.

See the potential of the share reception desk and Clarke Rendall STUDIO will work with you to find the ideal combination of Corian® colours and premium metals to deliver a stunning design relevant to your design scheme from a standard product.

Each model is constructed from a number of reconfigurable sections selected to achieve the ideal desk design and size for your space, without incurring the additional costs of a bespoke solution.





Clarke Rendall STUDIO

Designs in DuPont™ CORIAN®



share H2 in Deep Nocturne and Brushed Brass



share H2-LS in Deep Cloud and Brushed Steel



share H1 in Glacier White and RAL 7024 Graphite Grey

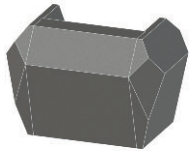


share H2-R in Deep Nocturne and Patinated Copper

share H1-L in Deep Nocturne and Brushed Steel

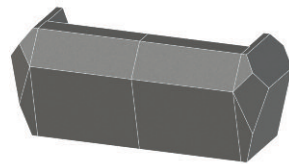


**N Compact** W: 1540 x D: 1050 x H: 1050



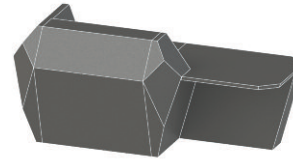
£10,800

**N1** W: 2540 x D: 1050 x H: 1050



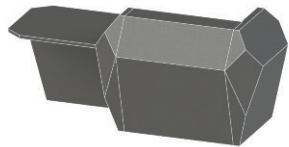
£14,415

**N1-L** W: 2395 x D: 1050 x H: 1050



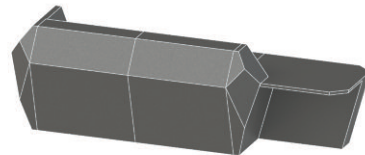
£12,510

**N1-R** W: 2395 x D: 1050 x H: 1050



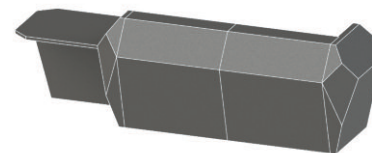
£12,510

**N2-L** W: 3395 x D: 1050 x H: 1050



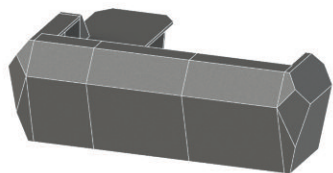
£16,125

**N2-R** W: 3395 x D: 1050 x H: 1050



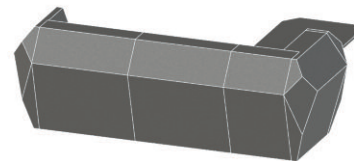
£16,125

**N2-LS** W: 3320 x D: 2175 x H: 1050



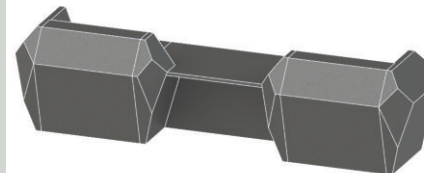
£21,525

**N2-RS** W: 3320 x D: 2175 x H: 1050



£21,525

**N2** W: 4040 x D: 1050 x H: 1050



£20,400

Prices shown exclude VAT, delivery, installation and on site Corian® seaming.

All dimensions in mm. Other configurations available on request. Clarke Rendall reserve the right to alter specifications and prices without prior notice.

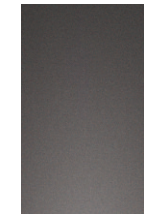
invite & share  
finishes

All Clarke Rendall STUDIO reception desks are available in a choice of three Corian® finishes as standard, and can also be specified as specials in any Corian® finish.

Corian® finishes - invite & share



Deep Nocturne



Deep Cloud



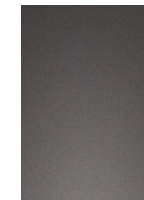
Glacier White

share reception desks feature distinctive metalwork available in a choice of three powder coat finishes, or three specialist real metal finishes. Call our support team on 01908 391600 to find out about POA custom metalwork finishes.

Powder coat metalwork finishes - share



RAL 9005  
Jet Black



RAL 7024  
Graphite Grey



RAL 9003  
Signal White

Specialist metalwork finishes - share



Patinated  
Copper



Brushed  
Steel



Brushed  
Brass

# invite & share

optional extras

## Backlit logo lettering - invite & share



## CNC engraved logo lettering - invite & share



## Recessed plinth lighting - invite & share



Call our support team on 01908 391600 for pricing on all optional extras.

share

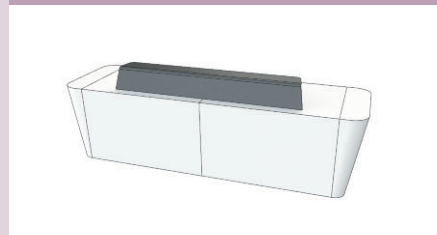
configurations, dimensions and retail prices

### H Compact W: 1440 x D: 950 x H: 960



METALWORK FINISH		
Powder coat	Brushed brass/steel	Patinated copper
£7,360	£8,020	£8,815

### H1 W: 2440 x D: 950 x H: 960



METALWORK FINISH		
Powder coat	Brushed brass/steel	Patinated copper
£9,930	£11,355	£12,945

### H1-L W: 2420 x D: 950 x H: 960



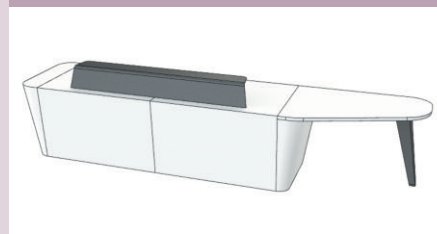
METALWORK FINISH		
Powder coat	Brushed brass/steel	Patinated copper
£9,225	£10,320	£11,700

### H1-R W: 2420 x D: 950 x H: 960



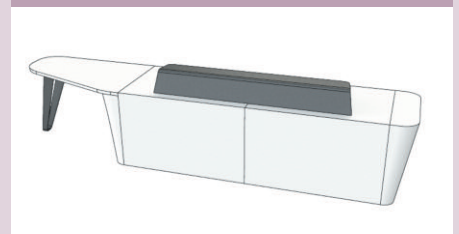
METALWORK FINISH		
Powder coat	Brushed brass/steel	Patinated copper
£9,225	£10,320	£11,700

### H2-L W: 3420 x D: 950 x H: 960



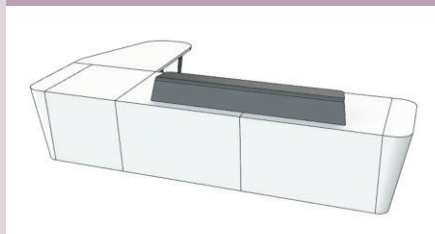
METALWORK FINISH		
Powder coat	Brushed brass/steel	Patinated copper
£11,795	£13,655	£15,830

### H2-R W: 3420 x D: 950 x H: 960



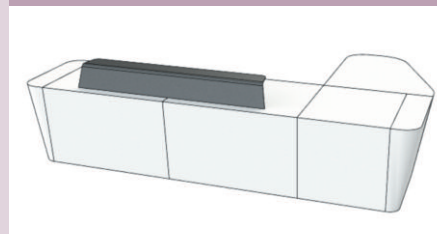
METALWORK FINISH		
Powder coat	Brushed brass/steel	Patinated copper
£11,795	£13,655	£15,830

### H2-LS W: 3170 x D: 2150 x H: 960



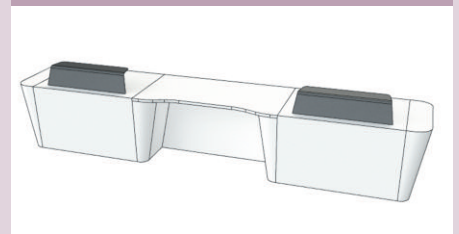
METALWORK FINISH		
Powder coat	Brushed brass/steel	Patinated copper
£12,465	£14,325	£16,495

### H2-RS W: 3170 x D: 2150 x H: 960



METALWORK FINISH		
Powder coat	Brushed brass/steel	Patinated copper
£12,465	£14,325	£16,495

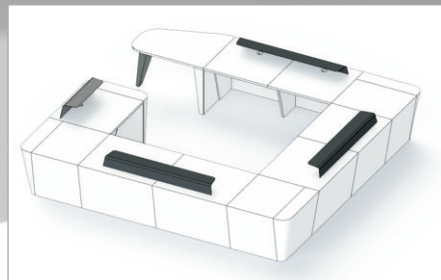
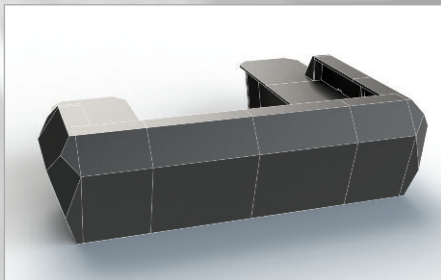
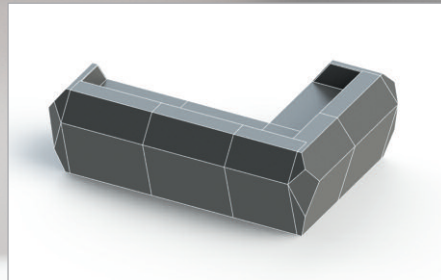
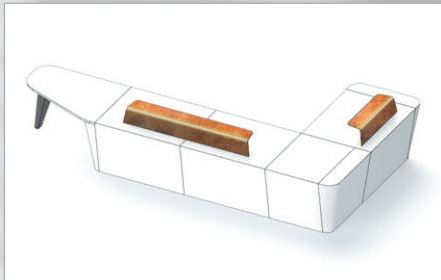
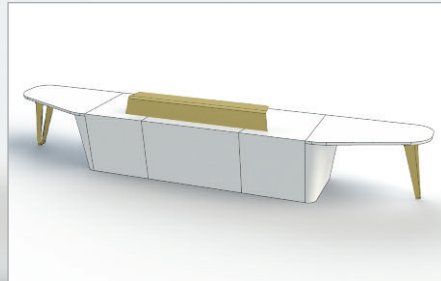
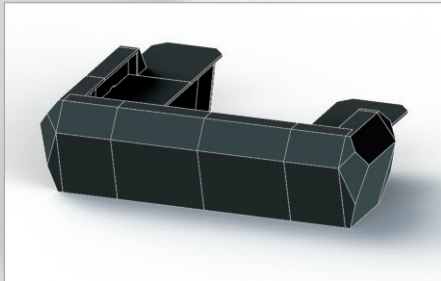
### H2 W: 3940 x D: 950 x H: 960



METALWORK FINISH		
Powder coat	Brushed brass/steel	Patinated copper
£15,065	£16,385	£17,975

Prices shown exclude VAT, delivery, installation and on site Corian® seaming.

All dimensions in mm. Other configurations available on request. Clarke Rendall reserve the right to alter specifications and prices without prior notice.



Non standard configurations

**Head Office:**

Unit 12, Denbigh Hall Industrial Estate, Denbigh Hall Drive,  
Bletchley, Milton Keynes MK3 7QT | Tel: 01908 391600

**London Showroom:**

104 - 110 Goswell Road, Clerkenwell, London EC1V 7DH | Tel: 020 7781 2162

Email: [salessupport@clarkerendall.com](mailto:salessupport@clarkerendall.com) | Web: [clarkerendall.com](http://clarkerendall.com)



Designs in **DuPont™ CORIAN®**