

# Fibre Termination Components



## Ferrules

- 2.5 & 1.25mm and custom ferrules
- Zirconia, glass, metal, Invar and custom ferrules
- Flat, pre-domed and funnelled PC ferrules
- Flat and pre-angled conical APC ferrules
- Flat and pre-angled stepped APC ferrules
- Single and multi-mode fibre



## Connectors

- SC, ST, MU, LC and FC
- PC and APC
- With (plug) and without (housing) ferrules
- Normal (N-type wide) and reduced (R-type narrow) FC key widths
- Long and short boots
- 0.9, 2, 2.4 & 3mm cables
- Normal and 360° tuning FC connectors

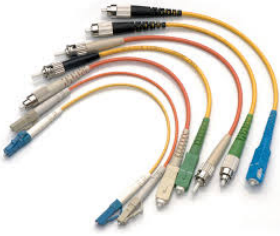
## Seikoh Giken Connector Buyers Guide

- SC, ST, MU, LC and FC
- PC and APC
- With (plug) and without (housing) ferrules
- Normal (N-type wide) and reduced (R-type narrow) FC key widths
- Long and short boots
- 0.9, 2, 2.4 & 3mm cables
- Normal and 360° tuning FC connectors



## Adaptors

- SC, FC, LC & MPO
- PC & APC
- bare fibre & hybrid
- bulkhead round, rectangular, oval
- with & without flange



## Optical Patch Cords

- Single mode
- Multi-mode
- V-groove array
- Polarisation maintaining
- Hybrid
- Pigtails
- Ribbon
- Mode conditioning
- Armoured cables
- Launch leads
- Master jumpers
- Short wavelength
- RGB



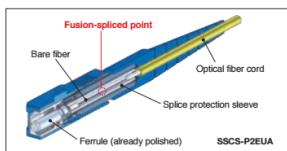
## Fixed Attenuators

- Fixed plug-type & in-line attenuators



## Gold Standard Series Connectors

The GS Series fibre optic connectors are designed to exceed industry standards while maximising end-user value. Integrating Seikoh Giken's precision moulding/manufacturing processes guarantee low loss optical performance and consistently high yields. The connectors utilise Seikoh Giken's globally recognised, injection moulded precision ferrules and feature a pre-assembled, one-piece construction with push-pull coupling. The GS Series optical connectors are available in both single mode and multi-mode ferrule formats and can be ordered with a wide range of strain relief boots for multiple cable formats. Duplex configurations are achieved with a simple, low-cost clip.



## Splice On Connectors

- Field termination with epoxy or polishing required
- Applicable for high reliability



## Fibre Optic Cables

- Outdoor, indoor
- Metal and non-metallic strength members
- Single and multi-fibre
- Armoured and non-armoured
- Multi-fibre cables



## High Power Connectors

- Beam expanded connectors
- Safety connectors with shutters and interlocks