



Creating Inspiring
Workplaces

Creating Inspiring Workplaces

For over 50 years, The Green Office Solutions has been a trusted provider of bespoke planting schemes, delivering innovative greenery that enhances the aesthetics, functionality, and well-being of workspaces.

Whether you're looking to add a single impactful feature or transform your entire office with a full-scale corporate design, we specialize in bringing the beauty of nature into both indoor and outdoor environments. Our custom solutions are carefully designed to fit the unique needs of each client, improving the atmosphere of your office and creating a more inviting, vibrant space.

We believe that incorporating greenery into the workplace goes beyond just visual appeal—it fosters a healthier, more productive environment. Our team works closely with businesses to provide tailored plant designs that support employee well-being, enhance creativity, and improve air quality. From sustainable plant installations to ongoing maintenance, The Green Office Solutions ensures that your workspace remains green, vibrant, and thriving all year round.



Why Choose The Green Office Solutions?

At The Green Office Solutions, we offer expert plant solutions that transform your workspace into a vibrant, healthy environment, enhancing both its look and function for a space where employees thrive and clients are impressed.

Expertise You Can Trust

We start with a free site survey to understand your needs, followed by bespoke plant recommendations—whether live or low-maintenance artificial plants. Our wide range of stylish planters ensures your greenery complements your branding and design.

Comprehensive Services

Choose from flexible packages, including rental with maintenance, purchase with maintenance, or standalone purchases, all designed to fit your budget. We also offer live plant hire for events like exhibitions and conferences, adding a touch of greenery to make your occasion memorable.

Unparalleled Quality & Service

Our plants are sustainably sourced from trusted growers, and we are ISO-accredited for quality, environmental responsibility, and safety. With our experienced team handling design, installation, and maintenance, you can trust us to deliver seamless, top-quality service every time.



The Benefits of Indoor Planting

Plants in your workspace boost health, happiness, and productivity.

Improve Health and Well-being

Plants naturally purify the air by reducing toxins and increasing oxygen levels. They also help alleviate stress, improve mood, and create a calming atmosphere that supports overall well-being.

Eco-Friendly Solutions

Living walls and moss displays are sustainable, biophilic designs that bring nature indoors, while promoting environmental responsibility and a greener workplace.

Boost Workplace Performance

Studies show that employees are up to 65% more productive and 58% happier in spaces with plants. A green environment encourages focus, boosts creativity, and inspires innovative thinking.

Improve Acoustics

Plants absorb sound, reducing noise levels and creating a quieter, more tranquil workspace that enhances concentration.





Our Services

[VIEW OUR SERVICES](#)

Interior Planting

Enhance your indoor spaces with custom planting solutions that reflect your brand. We offer bespoke planters in a variety of colours and styles, living walls that purify air and reduce noise, and preserved moss walls that provide a low-maintenance, natural focal point.

Exterior Planting

Brighten your outdoor areas with year-round greenery. From hanging baskets to architectural planters, we create eye-catching designs that are both practical and well-maintained, ensuring your exterior spaces always look their best.

Seasonal Christmas Displays

Make the Festive Season Magical

Transform your space this holiday season with our professionally designed Christmas trees and decorations. We offer both real and artificial tree options, ensuring you can find the perfect fit for your style. Our expert team will deliver and fully decorate your tree, creating a stunning focal point for your space. Once the season is over, we take care of the hassle by providing removal and storage services, so you can enjoy a stress-free holiday experience from start to finish.



Health & Green Living

Health Benefits of Plants

Plants improve air quality by removing toxins and carbon dioxide. They also reduce stress, enhance mental well-being, and lower sickness rates, contributing to a healthier and more productive environment.

Environmental Benefits

Living walls absorb 2.3kg of carbon dioxide and generate 1.7kg of oxygen per square meter each year. Biophilic designs not only enhance aesthetics but also support sustainable practices, promoting an eco-friendly workplace.

Did You Know?

Workplaces with plants experience a 30% increase in focus, a 58% rise in happiness, and a 65% boost in productivity.





Our Projects

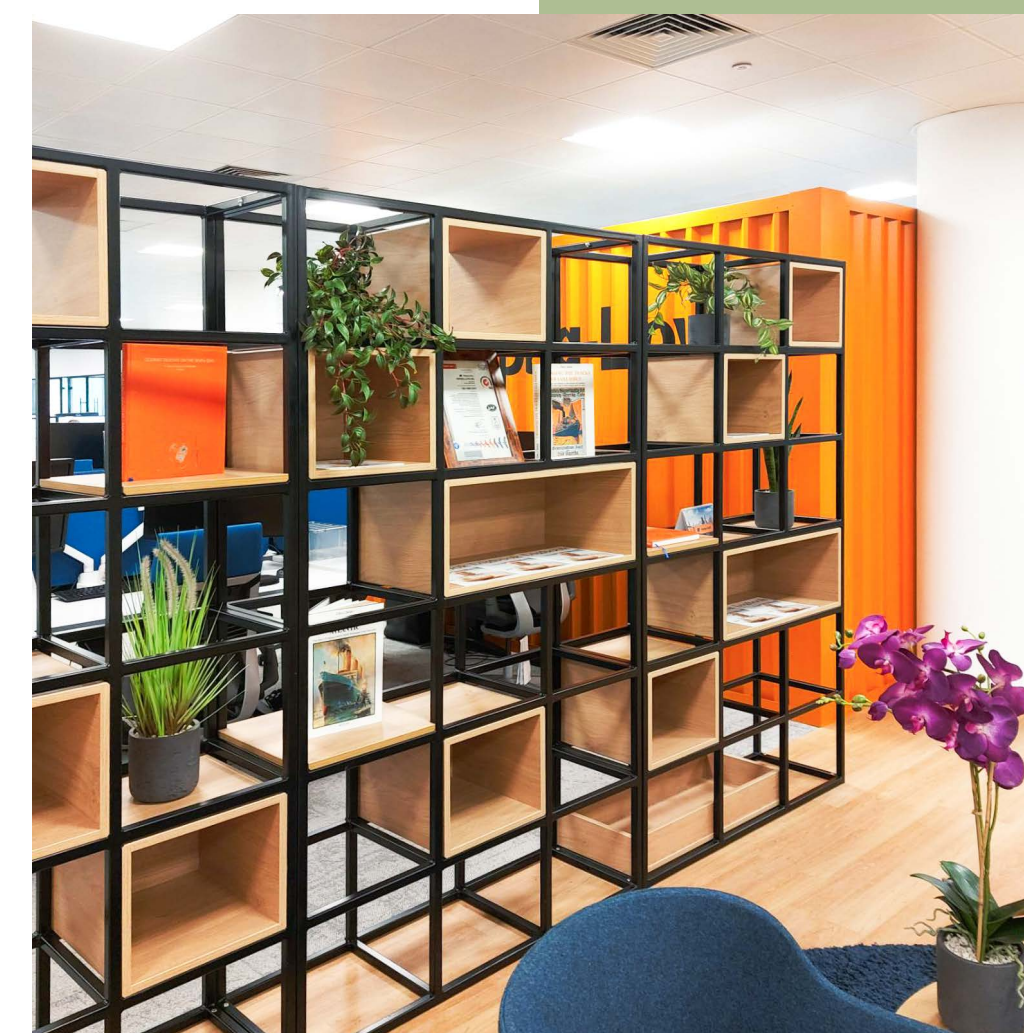


Liverpool Office

Description

On this project in Liverpool was fantastic to get involved in we worked with the client to provide an on-trend scheme for their office space. The scheme comprises matt and concrete-effect planters a mix of luscious greenery and succulents. This brings in the green vibrancy that the space was lacking previously, giving the staff a healthier, happier place to work.

[VIEW OUR PROJECTS](#)

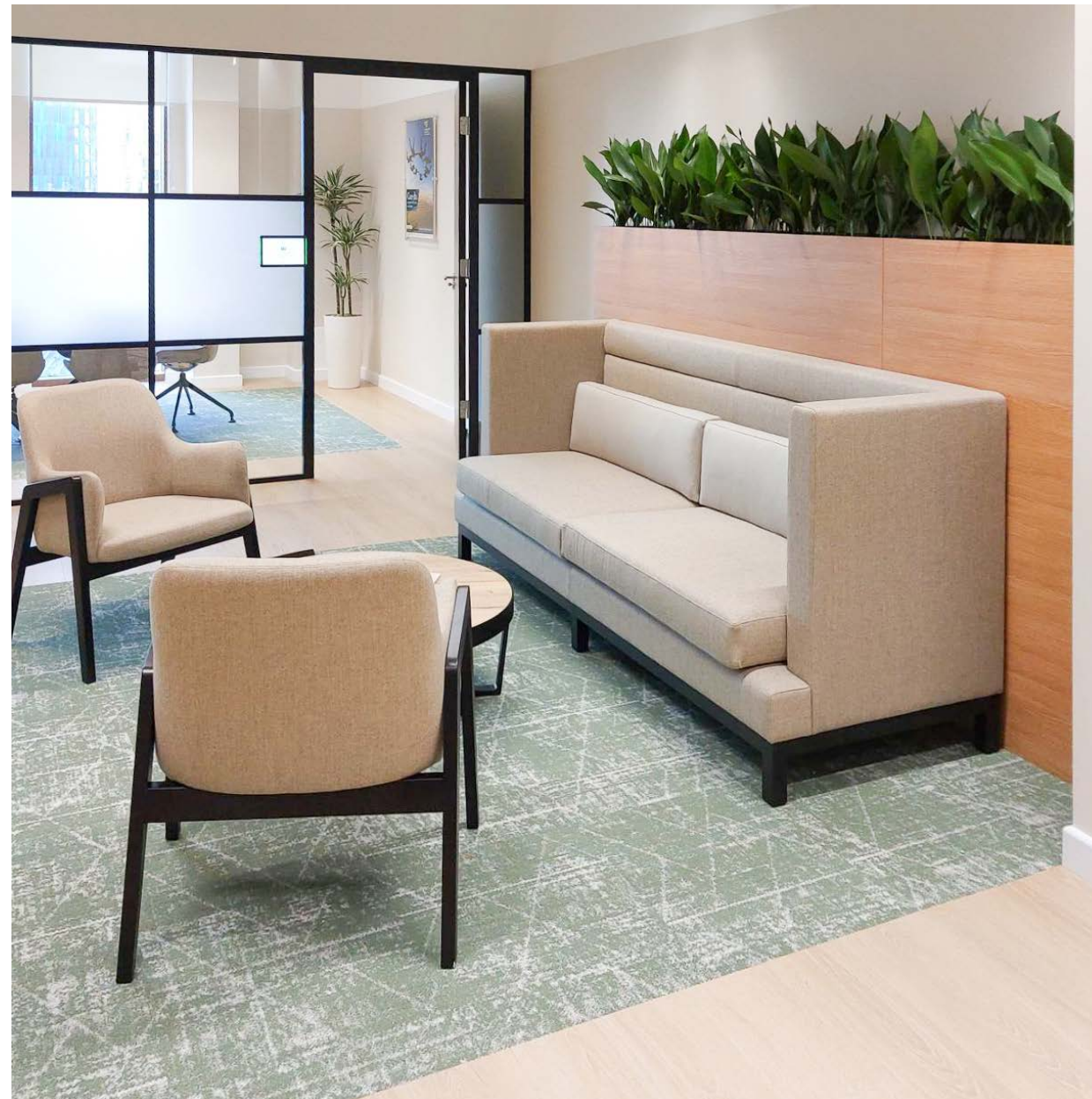


Newcastle Office

Description

On this project we completed for this office in Newcastle, we provided a full planting scheme in free-standing pots and inbuilt troughs and shelving units. We also developed custom trough liners for the units to house our planting system and provide optimal conditions for the planting to thrive.

[VIEW OUR PROJECTS](#)



Manchester Office

Description

On this project, we were tasked with adding planting to enhance the office space, well-being, and comfort on the 3rd floor office space of the Tootal building in Manchester.

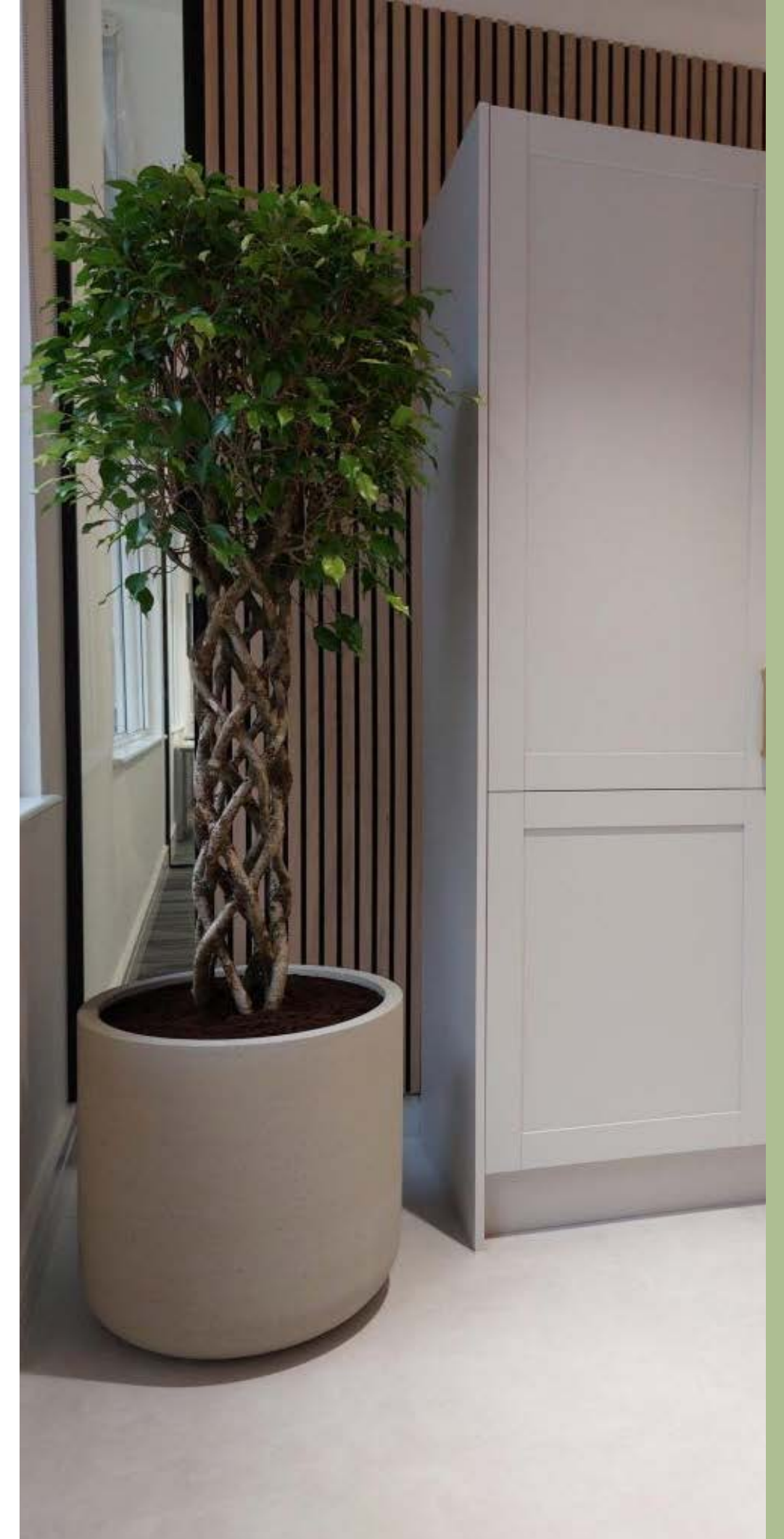
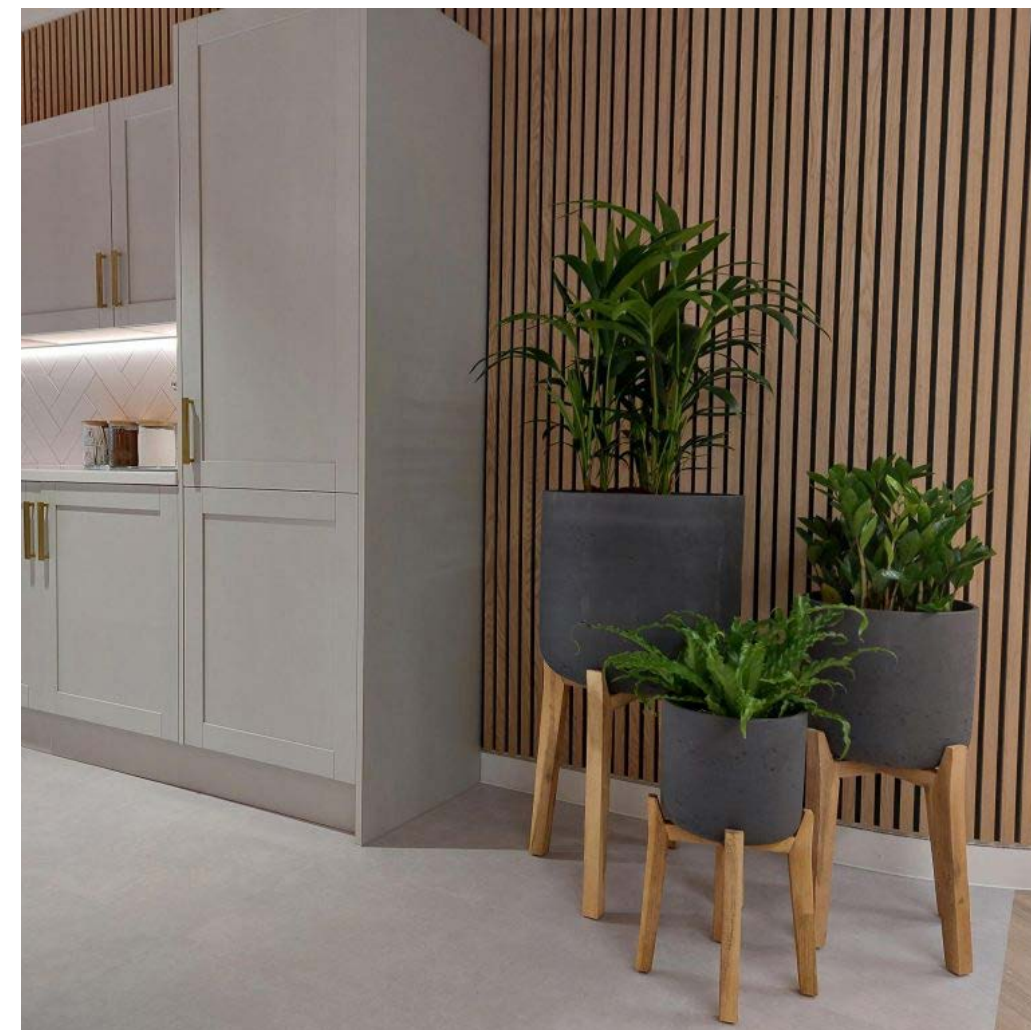
The client wanted a 'scandi' look and feel to the space, and the plants had to reflect that also. We collaborated with them to bring in a planting scheme consisting of neutral and natural toned planters that complimented the overall design of the space, adding vibrancy and life.

For maximum interest, we included a variety of planting, such as:

- Open Braid Fig trees
- Calathea Triostar
- Chamaedorea Palms
- Kentia Palms
- Asplenium Osaka
- Zamioculcas plants

We love the way all the elements came together to fully enhance this space, and the client was thrilled.

[VIEW OUR PROJECTS](#)



Blue Fin Building London

What did we do?

- Cabinet top planters filled with lush Aglaonema Maria and elegant Silver Queen.
- Floor-standing plants like Strelitzia, Ficus Lyrata, and Dracaena, nestled in modern concrete-look pots.
- The showstopper? A Para Vert plant divider, artfully filled with Zamioculcas, Sansevieria, Calathea, and Chamaedorea Palms—perfect for separating spaces while maintaining an open, airy feel.

[VIEW OUR PROJECTS](#)





Contact Us

Discover how The Green Office Solutions can transform your workplace with innovative planting schemes tailored to your needs.

T: 01772 620099

E: admin@thegreenofficesolutions.co.uk

thegreenofficesolutions.co.uk

bringing the outside in...

