

logitech®

Microsoft

from... **vangis**
presenting the right image

LOGITECH ROOM SOLUTIONS FOR MICROSOFT TEAMS



Tel: 0845 869 4421 info@vangis.com

Microsoft® Teams Rooms transforms any space to a Teams meeting place with one-touch join, easy content sharing, and center of room control for Microsoft Teams and Skype® for Business meetings. Now, Logitech® makes it easy for IT to deploy these benefits to meeting rooms of all shapes and sizes with pre-configured systems and expert support resources.

Logitech Room Solutions for Microsoft Teams include everything you need to build out conference rooms with one or two displays. Available in small, medium, and large configurations, Logitech Room Solutions for Microsoft come pre-configured with a Microsoft-approved mini PC, a Logitech conferencecam with RightSense technologies, a PC mount with cable retention, and the Logitech Tap touch controller.

Systems arrive neatly packaged and ready for installation. A setup guide shows how components fit together, while an online wizard guides you through configuration step-by-step. If you need assistance with initial configuration and integration with your Microsoft infrastructure, Logitech JumpStart service provides access to additional resources and deployment experts.

With quality components, commercial-grade cabling, and innovations that automate a better user experience, Logitech Room Solutions for Microsoft Teams make it easy to deploy Microsoft Teams Rooms throughout the workplace.

SMALL ROOMS



Designed for focus rooms and smaller conference rooms, the small configuration minimizes cabling and saves space with Logitech MeetUp, a marvel of miniaturization that mounts neatly above or below a display. Place Logitech Tap on the table, or add a wall mount to save even more space.

MEDIUM ROOMS



As rooms get bigger, tables grow longer and people sit farther from the camera. That's why the medium configuration features Logitech Rally, a premium conferencecam that pairs an advanced ultra-HD camera with modular audio that scales to support a wide range of room sizes and layouts.

LARGE ROOMS



The large configuration upgrades to Rally Plus with two speakers for clear audio throughout the room. Dual mic pods expand coverage for up to 16 people, and the system supports up to 7 mic pods for rooms with up to 46 seats.



FEATURED COMPONENTS



Logitech Tap
Touch controller for workplace collaboration

Responsive 10.1" touch screen
Fan-free for silent operation
Commercial-grade cabling and cable management
HDMI input for instant content sharing



Logitech MeetUp

All-in-One conferencecam with an extra-wide field of view and integrated audio

See everyone, even those close to the camera

RightSense™ technologies with automatic framing

Compact design minimizes cabling and clutter



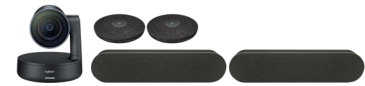
Logitech Rally

Premium Ultra-HD conferencecam system for mid-size rooms

RightSense technologies with automatic framing

Front-mounting speaker and tabletop mic pod for natural, directional audio

Premium components and sleek industrial design



Logitech Rally Plus

Premium Ultra-HD conferencecam system for larger rooms

Adds a second speaker and second mic pod for expanded coverage

Expand with additional mic pods (up to 7 total) for rooms with up to 46 people

Large configurations add a Rally Mic Pod Hub for under-table cable routing

FEATURED COMPONENTS

Logitech Strong USB

SuperSpeed USB 10 Gbps cable



10m Included



25m Optional

The Logitech Tap touch controller connects to the meeting room PC via Logitech Strong USB, a plenum-rated cable that offers 10 meters (32.8 feet) of reach. Even in larger rooms, you can position Tap for convenient operation while hiding the PC in a credenza or behind display.

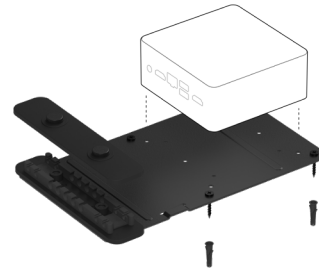
Aramid-reinforced for a durable connection between Tap and the PC

Plenum-rated and Eca certified for runs in walls, raceways, and conduit

25 meter cable also available

PC Mount

Mounting bracket with integrated cable retention



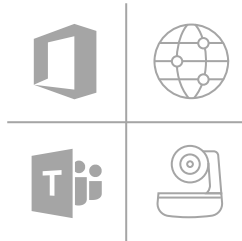
Compatible with Intel® NUC and other SFF PCs with a 100mm VESA pattern

Integrated cable retention keeps connections tight

Secures computers and cables to walls and beneath tables

Logitech JumpStart

Initial integration support for Logitech Room Solutions for Microsoft Teams



Includes 90 days of access to expert resources

Staffed by dedicated personnel with full system expertise

Complements the support and warranty services included with individual components

Services delivered in English only

Rally Mic Pod

Modular microphones with RightSound™ for Logitech Rally



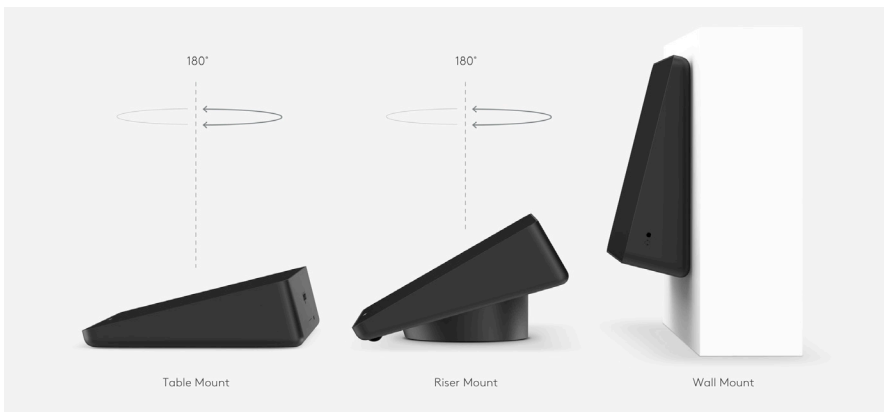
Auto-levels voices and suppresses noise for clear audio

Convenient mute control and indicator light

Connect up to seven Mic Pods for U-shaped tables and large rooms




Large room configurations include a Rally Mic Pod Hub to simplify under-table cable routing

MOUNTS FOR LOGITECH TAP



Place the Logitech Tap touch controller on the tabletop, or add a mount for better security, convenience and cable management. The Table and Riser mounts fit in standard grommet holes and swivel 180° for operation from both sides of the table. The Wall mount saves space in smaller rooms.

TECH SPECS

	SMALL ROOM	MEDIUM ROOM	LARGE ROOM
			
Conference Camera	Logitech MeetUp	Logitech Rally (1 speaker, 1 mic pod)	Logitech Rally Plus (2 speakers, 2 mic pods)
Logitech Tap Touch Controller	✓	✓	✓
Logitech Strong USB 10m	✓	✓	✓
PC Mount	✓	✓	✓
Microsoft-Approved Mini PC	✓	✓	✓
Windows 10 IOT Enterprise	✓	✓	✓
Rally Mounting Kit	-	✓	✓
Rally Mic Pod Hub	-	-	✓
Optional Accessories	Tap Table Mount Tap Riser Mount Tap Wall Mount Logitech Strong USB 25m Expansion Mic for MeetUp TV Mount for MeetUp	Tap Table Mount Tap Riser Mount Tap Wall Mount Logitech Strong USB 25m Rally Mic Pod (up to 7 total) Rally Speaker (up to 2 total) Rally Mic Pod Hub	Tap Table Mount Tap Riser Mount Tap Wall Mount Logitech Strong USB 25m Rally Mic Pod (up to 7 total) Rally Mic Pod Hub
Support Resources	Printed Setup Guide Online Configuration Wizard Logitech JumpStart (90 days) Logitech Support Services	Printed Setup Guide Online Configuration Wizard Logitech JumpStart (90 days) Logitech Support Services	Printed Setup Guide Online Configuration Wizard Logitech JumpStart (90 days) Logitech Support Services
Warranty	2 year limited hardware warranty	2 year limited hardware warranty	2 year limited hardware warranty

PRODUCT INFORMATION

Logitech Tap - www.logitech.com/tap

Logitech MeetUp - www.logitech.com/meetup

Logitech Rally and Rally Plus - www.logitech.com/rally

RightSense Technologies - www.logitech.com/rightsense

Logitech JumpStart - www.logitech.com/jumpstart

for more info contact Vangis. Tel 0845 869 4421 info@vangis.com

www.logitech.com/microsoft/rooms

Logitech Inc. 7700 Gateway Blvd., Newark, CA 94560
Published October 2019

© 2019 Logitech. Logitech, the Logitech logo and other Logitech marks are owned by Logitech and may be registered. All other trademarks are the properties of their respective owners. Logitech assumes no responsibility for any errors that may appear in this publication. Product, pricing and feature information contained herein is subject to change without notice.