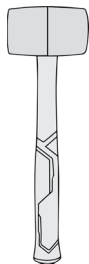




TOOLS REQUIRED



Rubber Mallet



Chalk Line
(optional)

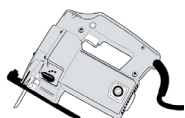


Metal 1m Ruler

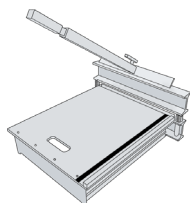
CUTTING TOOLS (Choice)



Concave Blade
(Utility Knife)



Jigsaw/Bandsaw
Medium Blade



Guillotine
Available for Hire

TOOL TIPS

✦ A Concave blade is curved, which makes cutting through tiles easier and safer. Avoid using a standard utility blade.

✦ If using an electrical saw, use a rough/medium wood blade.

✦ Always wear cutproof gloves.

✦ When using a utility knife, score the cutting line several times and then bend/fold the tile back and forth until it breaks away.

BEFORE YOU START

Heat Expansion

Tiles can expand and contract with changes in temperature. Areas of tile that are exposed to a heat source* may expand causing tiles to lift. It is advisable to glue the tiles in these areas. We recommend using Uzin – MK 92 S, following the manufacturer's instructions.

*Heat sources include but not limited to:

Direct sunlight (for example south facing shutters), ovens, furnaces, catalytic converters.

Outdoor Usage

The E500 range is not suitable for outdoor use.

Heavy Trucks and/or Tight Turning Circles

Some vehicle designs present problems for Ecotile for example heavy trucks with small wheels or electric trucks with a battery located over the drive wheel. We strongly advise you to test the tiles with these types of vehicles before making a decision on which thickness to use. You should also consider using an adhesive.

Surface/Witness Marks

The method of manufacture may result in a witness mark* being visible on the tile at the injection moulding point (centre) and around the edge of the tile. Please check the tiles before installation. If any markings are unacceptable, do not continue with installation as we will not accept responsibility for replacing or refunding the cost of any goods after 10m² or more have been installed.

*A witness mark is an unavoidable alignment mark essential to the manufacturing process.

Staining From Rubber Tyres

It is possible for tyres and wheels to stain Ecotile. This is caused by a chemical reaction between the anti-oxidant used in some rubbers and the plasticizer used in vinyl. We strongly advise that you use darker tiles (black & graphite) to reduce the visibility of any stains. You should also consider the application of our anti-colour sealer. Please contact us for further information.

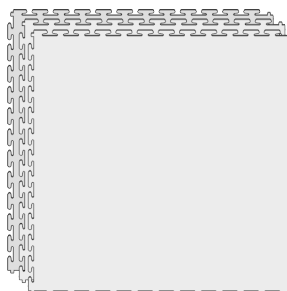
PREPARATION

Allow tiles to acclimatise in the room for 24 hours. The minimum installation temperature is 15°C. If time is short, we recommend you split the tiles into smaller stacks (as seen in step 2) to speed up acclimatisation.

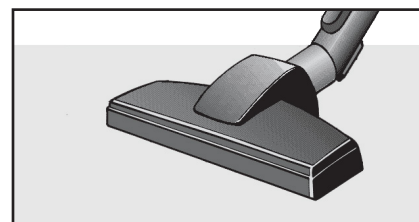
Please Note: We are unable to honour our warranty terms for installations that have taken place at temperatures below 15°C.

If installation **has** to take place at a temperature below 15°C, ensure the tiles acclimatise to the ambient temperature of the room before starting. Leave a larger expansion gap (than the recommended 5mm) between the tiles and any fixed point.

15 °C



Step 1: Sweep or vacuum the floor to remove any loose impediments. Remove any high points in the floor and fill any holes with a suitable floor repair compound.



Step 2: Split the pallet into several stacks and place them around the area. They will acclimatise quicker, and will be easier to access during installation.

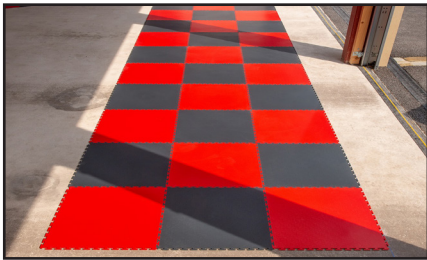


STARTING OUT

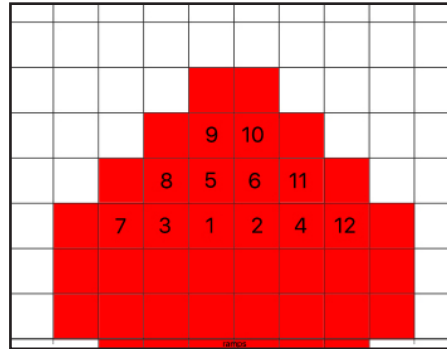
Step 1: It's extremely important that tiles are kept square during installation. Every room has a different starting point. If you can, identify a straight wall or edge to work from. Snap a **straight** chalk or laser line 1-1.5m away from the wall.

Step 2: Begin fitting the tiles together creating one row of Ecotile against the straight line. Adjust the position of the row carefully along the line considering the cuts to be made on either side.

Step 3: Add two more rows and shuffle the tiles ensuring they are as straight as possible and flush against the chalk/laser line.



Step 4: Continue to add tiles forming a pyramid (Refer to the numbering system below).



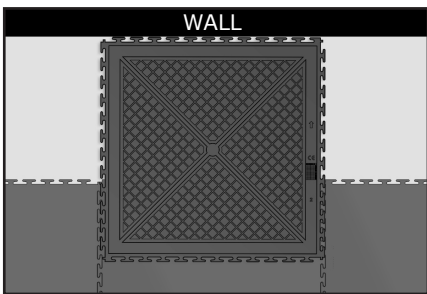
Step 5: Continue to build the pyramid adding one full size tile to the end of each row until the room is covered.

When you can no longer lay any more full sized tiles, cut the remaining tiles to fit using our cutting instructions below.

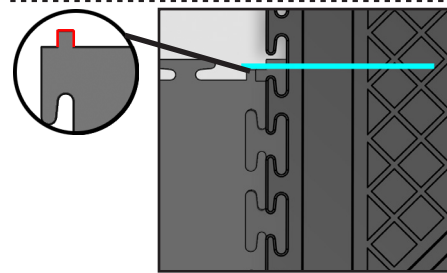


CUTTING TILES

To make a cut, turn a tile over and place it on top of an installed tile. Push it against the wall or object as shown below.



Every tile has a small **square marker** in each corner. Using the edge of this marker **as a guide**, mark the tile you are cutting with a pen. Do the same on both sides.



Join the two marks together with a metal ruler to create a cutting line. Cut the tile using your preferred method. When the tile is flipped, it should fit leaving a 5mm gap between the edge of the tile and the wall.

Continue until you have completed the remaining cuts.

We recommend you finish the edges with caulk and/or skirting boards.

If you have any concerns about fitting your floor, you can contact us here: **+44 (0)1582 788 232 or info@ecotileflooring.com**

FOR THE PERFECT FINISH

- + Leave an expansion gap (minimum of 5mm) between the tiles and any fixed point
- + Don't force tiles together - if they don't fit together easily, something is wrong
- + Undercut wooden doorjamb and slip the tiles underneath
- + Use ramps to create safe transitions into the room
- + Glue the tiles if they are exposed to direct sunlight (refer to Page 1 - Heat Expansion)

Cleaning & Maintenance

Vacuum or sweep your floor regularly. Use a rotary scrubber dryer or flat head mop. In partnership with Dr Schutz, we have created a comprehensive and professional floor cleaning pack to help you get the best out of your new floor:

- 1 x 750ml bottle of Clean & Strip Heavy Duty Floor Cleaner
- 1 x 750ml bottle of Matt Floor Sealer
- 1 x 750ml bottle of R1000 Floor Cleaner for day to day cleaning
- 1 x Padmaster blue for use with Cleaning Pad and Microfibre Pad White
- 1 x Heavy Duty Green Cleaning Pad for use with the Clean & Strip
- 1 x Furniture Glider Pads.

Contact us for more information on cleaning kits and adhesives.

Dr. Schutz®

