

Greenbergs est 1903

G A R M E N T S

4

Healthcare

Leading UK healthcare supplier offering a vast range of durable uniforms, designed to meet the needs of health and care professionals.

26

Simki

Premium brand, Simki, offers scrubs that feel like activewear to healthcare professionals. Made to perform better & go further.

32

Beauty & Wellness

Industry leader, La Beeby, offers feel-good uniforms for every-body. Specially designed for beauty, health, and wellness professionals.

60

Chefswear

Bringing quality to the kitchen, with crisp and straightforward garments to bring the back of house to life.

66

Eco Tech Range

Made from premium recycled technical fabrics, Eco Tech raises the bar in sustainable teamwear.

80

Sports & Leisurewear

Extensive stock offering of colour coordinated styles of unbranded, performance sports & leisurewear.

104

Size Guides

Easy to follow size charts for all product ranges.

Healthcare Collection

A leading UK healthcare supplier offering durable and practical products. Explore our vast range of uniforms, now made from recycled polyester*. Each piece is designed to withstand job role demands and launder easily.

6-9	LADIES TUNIC
10-11	GARMENTS WITH EPPS LOOPS - DENTAL MEN'S TUNIC / LADIES DRESS / MEN'S TUNIC / LADIES TUNIC / EPAULETTES
12-13	LADIES DRESS
14-15	LADIES TROUSER / MEN'S TROUSER
16-17	MATERNITY TUNIC / MATERNITY TROUSER
18-21	MEN'S TUNIC
22-24	SCRUB TOP & TROUSER
25	TABARD

*Whilst we transition to recycled polyester, some older stock will be non-recycled.





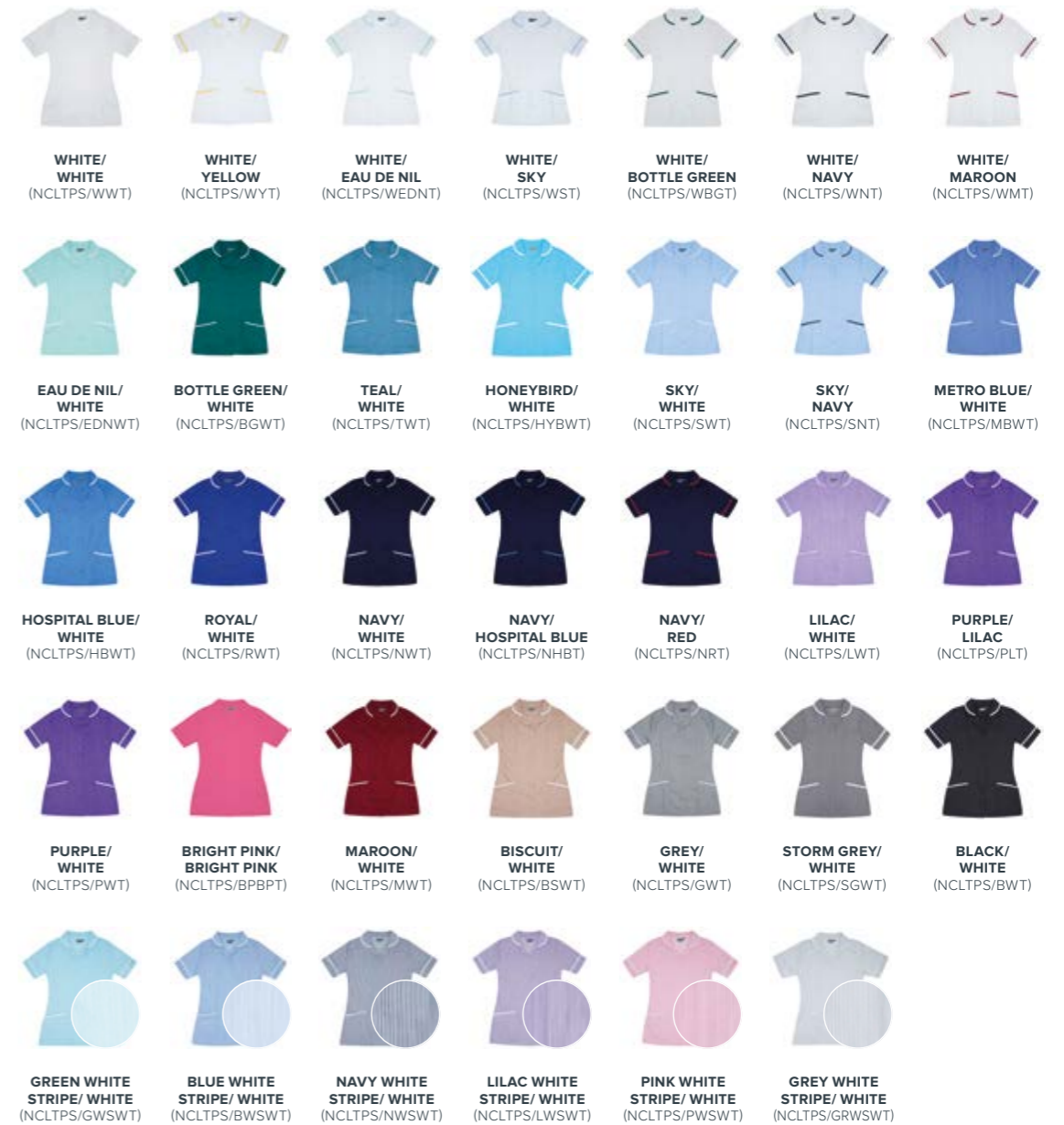
Ladies Tunic

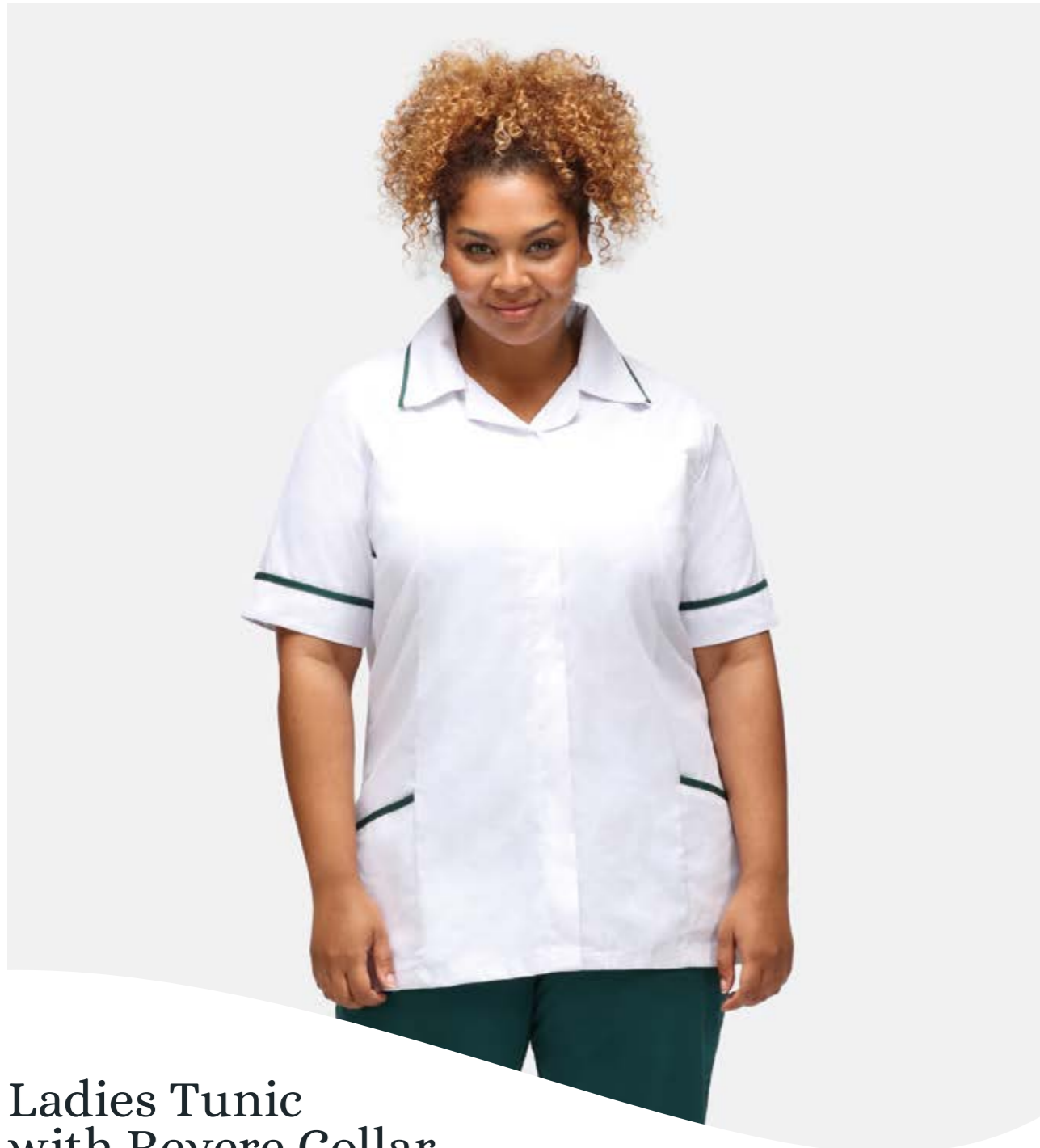
LADIES SIZES: 6-30
 PRODUCT CODE: NCLTPS

- 195 gsm
- Princess seam detail
- Round collar
- Two chest pockets with waterproof lining in left pocket
- Chest pockets feature a loose pocket bag for easy embroidery access
- Two lower hip pockets with key loop in the right pocket
- Concealed open ended zip, with press stud
- Action back and vents for ease of movement
- Trim to collar, sleeves and lower pockets

MATERIAL: Colours: 65% Recycled Polyester*, 35% Cotton
 White & Stripes: 65% Polyester, 35% Cotton

WASHING INSTRUCTIONS: 65° wash





Ladies Tunic with Revere Collar

LADIES SIZES: 6-30
PRODUCT CODE: NCLTPSR

- 195 gsm
- Princess seam detail
- Revere collar
- Two chest pockets with waterproof lining in left pocket
- Chest pockets feature a loose pocket bag for easy embroidery access
- Two lower hip pockets with key loop in the right pocket
- Concealed open ended zip, with press stud
- Action back and vents for ease of movement
- Trim to collar, sleeves and lower pockets

MATERIAL: Colours: 65% Recycled Polyester*, 35% Cotton
White: 65% Polyester, 35% Cotton

WASHING INSTRUCTIONS: 65° wash



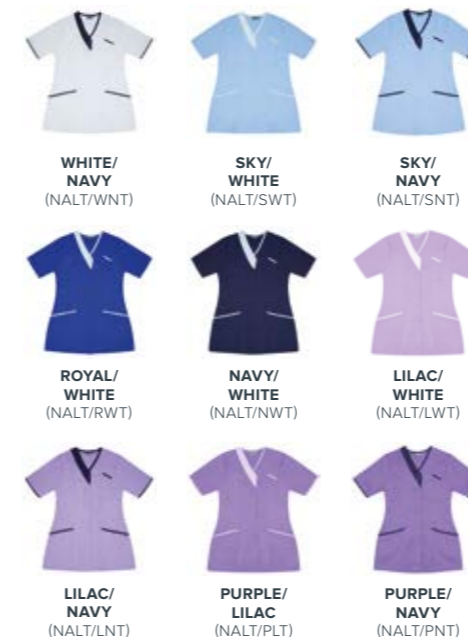
Ladies Asymmetric Tunic

LADIES SIZES: 6-30
PRODUCT CODE: NALT

- 195 gsm
- Princess seam detail
- Asymmetrical neckline detail
- One left chest pocket with waterproof lining
- Two lower hip pockets
- Concealed open ended zip, with press stud
- Action back for ease of movement
- Trim to neckline, sleeves and pockets

MATERIAL: Colours: 65% Recycled Polyester*, 35% Cotton
White: 65% Polyester, 35% Cotton

WASHING INSTRUCTIONS: 65° wash



Men's Dental Tunic with Epaulette Loops

MEN'S SIZES: 32"-54"
PRODUCT CODE: NDMTE

- 195 gsm
- Stand collar
- With epaulette loops
- Asymmetrical front with press stud fastening
- One left chest pocket with waterproof lining
- One lower left hip pocket
- Mock back belt
- Action back and vents for ease of movement

MATERIAL: 65% Polyester, 35% Cotton

WASHING INSTRUCTIONS: 65° wash

○ WHITE (NDMTE/W)



- | | |
|-------------------------|--------------------------------|
| ○ WHITE (NE/W) | ● LILAC (NE/L) |
| ● YELLOW (NE/Y) | ● PURPLE (NE/P) |
| ● GREY (NE/G) | ● MAROON (NE/M) |
| ● EAU DE NIL (NE/EDN) | ● RED (NE/RD) |
| ● BOTTLE GREEN (NE/BG) | ● BLACK (NE/B) |
| ● TEAL (NE/T) | ● GREY/ WHITE STRIPE (NE/GRWS) |
| ● SKY (NE/S) | ● GREEN/ WHITE STRIPE (NE/GWS) |
| ● METRO BLUE (NE/MB) | ● PINK/ WHITE STRIPE (NE/PWS) |
| ● HOSPITAL BLUE (NE/HB) | ● LILAC/ WHITE STRIPE (NE/LWS) |
| ● ROYAL BLUE (NE/R) | ● BLUE/ WHITE STRIPE (NE/BWS) |
| ● NAVY (NE/N) | ● NAVY/ WHITE STRIPE (NE/NWS) |

Epaulettes

ONE SIZE
PRODUCT CODE: NE

- 195 gsm
- Epaulettes with press studs
- Sold in pairs
- Easy way to identify distinct roles within your workplace

MATERIAL:
Colours: 65% Recycled Polyester*, 35% Cotton
White & Stripes: 65% Polyester, 35% Cotton

WASHING INSTRUCTIONS: 65° wash

Ladies Dress with Epaulette Loops

LADIES SIZES: 6-30
PRODUCT CODE: NCLDE

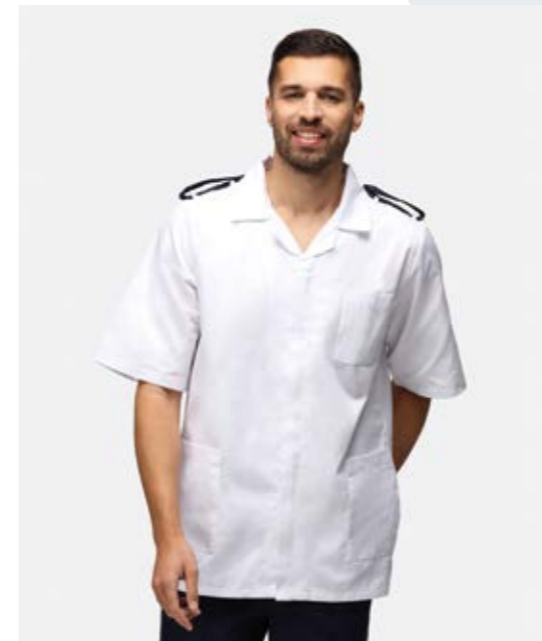
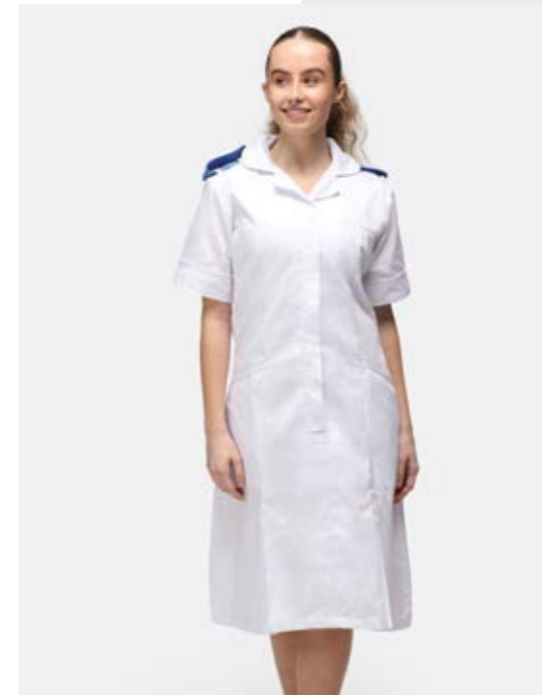
- 195 gsm • Princess seam detail • Round collar
- With epaulette loops • Two chest pockets, with a waterproof lining in the left pocket • Chest pockets feature a loose pocket bag for easy embroidery access • Two lower pockets, with a key loop in the right pocket • Concealed zip fastening, with press stud • Action back, front and back kick pleats for ease of movement • Self coloured trim to collar, sleeves and lower pockets

LENGTHS: Short (100cm), Regular (106cm), Tall (112cm)

MATERIAL: 65% Polyester, 35% Cotton

WASHING INSTRUCTIONS: 65° wash

○ WHITE (NCLDE/W)



Men's Classic Tunic with Epaulette Loops

MEN'S SIZES: 32"-54"
PRODUCT CODE: NCMTE

- 195 gsm • Revere collar • With epaulette loops
- One left chest pocket with waterproof lining
- Two lower hip pockets with waterproof lining in the left pocket and key loop in the right pocket
- Concealed zip fastening, with press stud
- Action back and vents for ease of movement

MATERIAL: 65% Polyester, 35% Cotton

WASHING INSTRUCTIONS: 65° wash

○ WHITE (NCMTE/W)

Ladies Tunic with Epaulette Loops

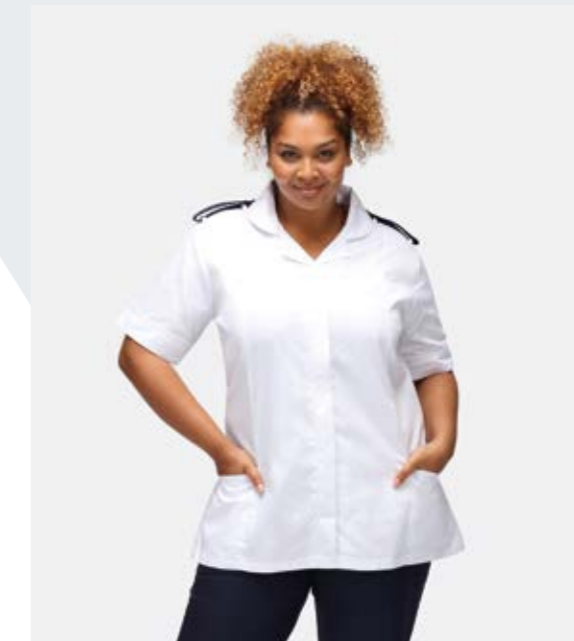
LADIES SIZES: 6-30
PRODUCT CODE: NCLTPSE

- 195 gsm • Princess seam detail • Round collar • With epaulette loops • Two chest pockets, with a waterproof lining in the left pocket • Chest pockets feature a loose pocket bag for easy embroidery access
- Two lower pockets, with a key loop in the right pocket • Concealed open ended zip fastening, with press stud
- Action back and vents for ease of movement • Self coloured trim to collar, sleeves and lower pockets

MATERIAL: 65% Polyester, 35% Cotton

WASHING INSTRUCTIONS: 65° wash

○ WHITE (NCLTPSE/W)



Ladies Dress

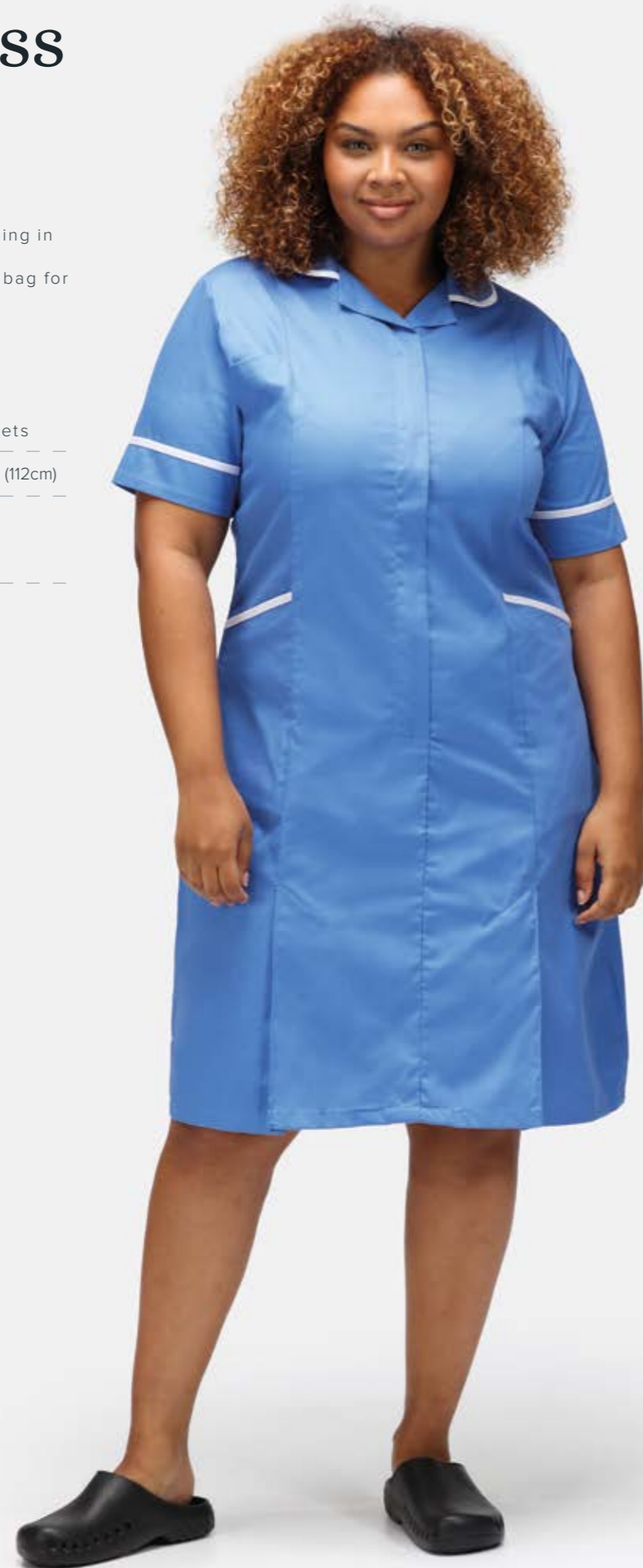
LADIES SIZES: 6-30
 PRODUCT CODE: NCLD

- 195 gsm
- Princess seam detail
- Round collar
- Two chest pockets with waterproof lining in left pocket
- Chest pockets feature a loose pocket bag for easy embroidery access
- Two lower hip pockets with key loop in the right pocket
- Concealed zip, with press stud
- Action back and front and back kick pleats for ease of movement
- Trim to collar, sleeves and lower pockets

LENGTHS: Short (100cm), Regular (106cm), Tall (112cm)

MATERIAL:
 Colours: 65% Recycled Polyester*, 35% Cotton
 Stripes: 65% Polyester, 35% Cotton

WASHING INSTRUCTIONS: 65° wash



EAU DE NIL/ WHITE
(NCLD/EDNWT)



TEAL/ WHITE
(NCLD/TWT)



SKY/ WHITE
(NCLD/SWT)



METRO BLUE/ WHITE
(NCLD/MBWT)



HOSPITAL BLUE/ WHITE
(NCLD/HBWT)



ROYAL/ WHITE
(NCLD/RWT)



NAVY/ WHITE
(NCLD/NWT)



NAVY/ HOSPITAL BLUE
(NCLD/NHBT)



NAVY/ RED
(NCLD/NRT)



LILAC/ WHITE
(NCLD/LWT)



PURPLE/ WHITE
(NCLD/PWT)



BISCUIT/ WHITE
(NCLD/BSWT)



GREY/ WHITE
(NCLD/GWT)



GREEN WHITE STRIPE/
WHITE
(NCLD/GWSWT)



BLUE WHITE STRIPE/
WHITE
(NCLD/BWSWT)



LILAC WHITE STRIPE/
WHITE
(NCLD/LWSWT)



PINK WHITE STRIPE/
WHITE
(NCLD/PWSWT)



GREY WHITE STRIPE/
WHITE
(NCLD/GRWSWT)



Ladies Trouser

LADIES SIZES: 6-30
PRODUCT CODE: NLSPCT

- 195 gsm
- Side elasticsation for comfort
- Belt loops
- Two side swing pockets
- Zip front fastening with button closure
- Available in four lengths

LENGTHS: Short - 27", Regular - 29", Tall - 31", Unhemmed - 35"

MATERIAL: 65% Recycled Polyester*, 35% Cotton

WASHING INSTRUCTIONS: 65° wash

- **NAVY** (NLSPCT/N)
- **BOTTLE GREEN** (NLSPCT/BG)
- **BLACK** (NLSPCT/B)
- **MAROON** (NLSPCT/M)
- **BROWN** (NLSPCT/BR) - REGULAR AND UNHEMMED LENGTHS ONLY
- **STORM GREY** (NLSPCT/SG) - REGULAR AND UNHEMMED LENGTHS ONLY

Men's Trouser

MEN'S SIZES: 28"-54"
PRODUCT CODE: NMPCTP

- 195 gsm
- Sewn in front pleats
- Belt loops
- Two front side pockets and one back pocket
- Zip front fastening with hook and bar closure
- Available in four lengths

LENGTHS: Short - 29", Regular - 31", Tall - 33", Unhemmed - 35"

MATERIAL: 65% Recycled Polyester*, 35% Cotton

WASHING INSTRUCTIONS: 65° wash

- **NAVY** (NMPCTP/N)
- **BOTTLE GREEN** (NMPCTP/BG)
- **BLACK** (NMPCTP/B)
- **BROWN** (NMPCTP/BR) - REGULAR AND UNHEMMED LENGTHS ONLY
- **STORM GREY** (NMPCTP/SG) - REGULAR AND UNHEMMED LENGTHS ONLY





Ladies Maternity Tunic

LADIES SIZES: 6-30
PRODUCT CODE: NCLTPSM

- 195 gsm
- Princess seam detail
- Round collar
- Two chest pockets and two lower pockets
- Chest pockets feature a loose pocket bag for easy embroidery access
- Concealed zip fastening, with press stud
- Action back and vents for ease of movement
- Trim to collar, sleeves and lower pockets

MATERIAL:
Colours: 65% Recycled Polyester*, 35% Cotton
Stripes: 65% Polyester, 35% Cotton

WASHING INSTRUCTIONS: 65° wash



Ladies Maternity Tunic with Epaulette Loops

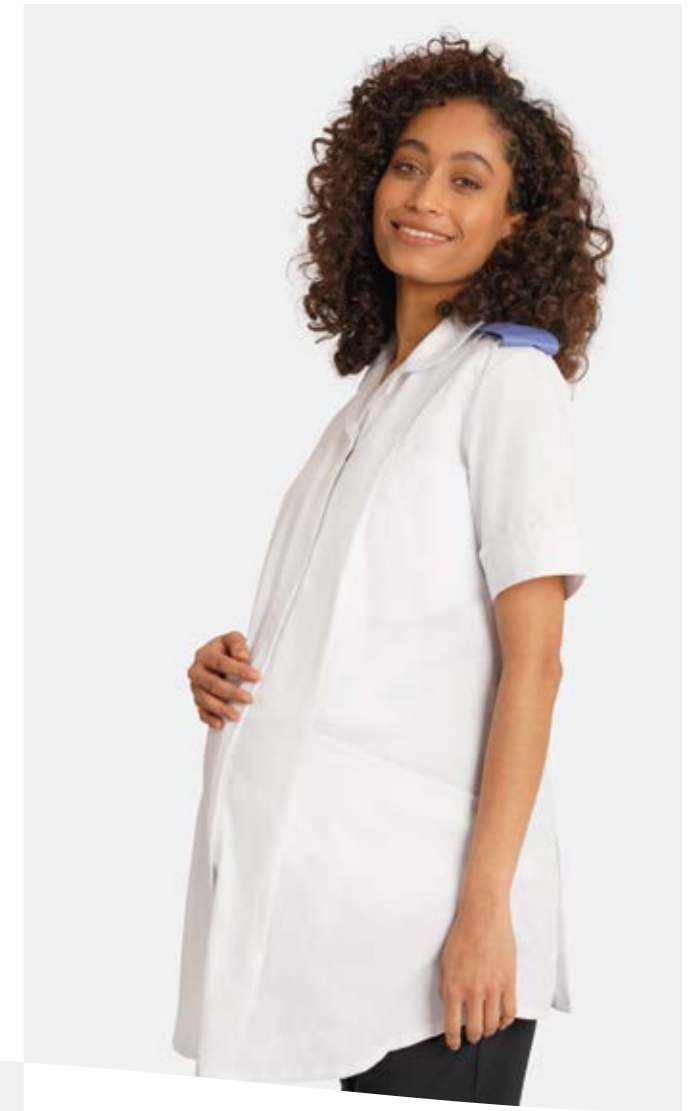
LADIES SIZES: 6-30
PRODUCT CODE: NCLTPSME

- 195 gsm
- Princess seam detail
- Round collar
- With epaulette loops. See the full range of epaulettes on pages 10-11
- Two chest pockets and two lower pockets
- Chest pockets feature a loose pocket bag for easy embroidery access
- Concealed zip fastening, with press stud
- Action back and vents for ease of movement
- Self coloured trim to collar, sleeves and lower pockets

MATERIAL: 65% Polyester, 35% Cotton

WASHING INSTRUCTIONS: 65° wash

● **WHITE** (NCLTPSME/W)



Ladies Maternity Trouser

LADIES SIZES: 6-30
PRODUCT CODE: NLMT

- 195 gsm
- Soft jersey front panel
- Elasticated waistband with adjustable button mechanism for flexibility

LENGTHS: Unhemmed - 35"

MATERIAL: 65% Recycled Polyester*, 35% Cotton

WASHING INSTRUCTIONS: 65° wash

- **NAVY** (NLMT/N)
- **BLACK** (NLMT/B)
- **BROWN** (NLMT/BR)



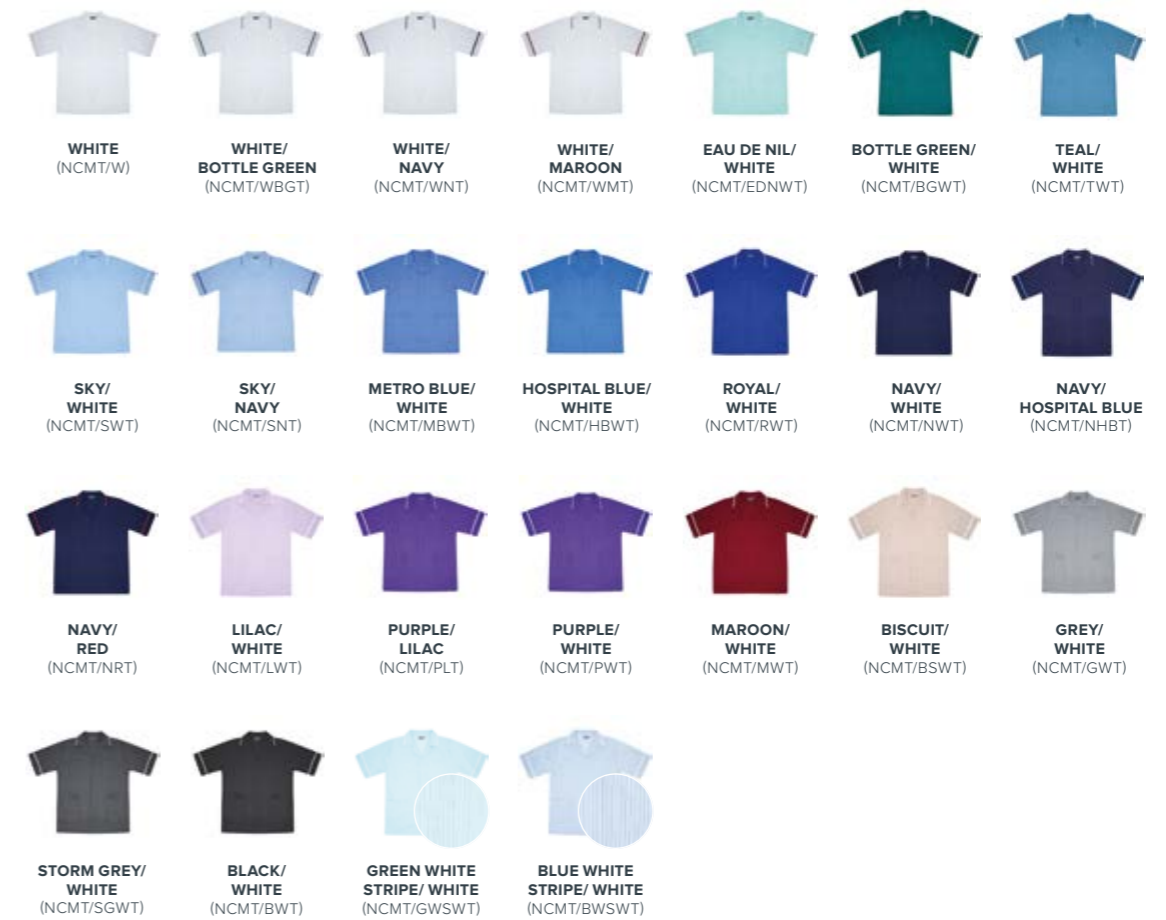
Men's Classic Tunic

MEN'S SIZES: 32"-54"
PRODUCT CODE: NCMT

- 195 gsm
- Revere collar
- Two chest pockets with waterproof lining in left pocket
- Two lower hip pockets with waterproof lining in the left pocket and key loop in the right pocket
- Concealed open ended zip, with press stud
- Action back and vents for ease of movement
- Trim to collar and sleeves

MATERIAL: Colours: 65% Recycled Polyester*, 35% Cotton
 White & Stripes: 65% Polyester, 35% Cotton

WASHING INSTRUCTIONS: 65° wash





Men's Dental Tunic

MEN'S SIZES: 32"-54"
PRODUCT CODE: NDMT

- 195 gsm
- Stand collar
- Asymmetrical front with press stud fastening
- One left chest pocket with waterproof lining
- One lower left hip pocket
- Mock back belt
- Action back and vents for ease of movement

MATERIAL: 65% Recycled Polyester*, 35% Cotton

WASHING INSTRUCTIONS: 65° wash

- GREY (NDMT/G)
- SKY (NDMT/S)
- METRO BLUE (NDMT/MB)
- HOSPITAL BLUE (NDMT/HB)
- NAVY (NDMT/N)
- BOTTLE GREEN (NDMT/BG)
- BLACK (NDMT/B)



Men's Mandarin Tunic

MEN'S SIZES: 32"-54"
PRODUCT CODE: NMT

- 195 gsm
- Mandarin collar
- With epaulette loops. See the full range of epaulettes on pages 10-11
- Zip fastening with press stud
- One left sleeve pocket, with waterproof lining and pen division
- Two lower hip pockets with internal key loop and additional bleeper pocket in right pocket
- Action back and vents for ease of movement

MATERIAL:
Colours: 65% Recycled Polyester*, 35% Cotton
White: 65% Polyester, 35% Cotton

WASHING INSTRUCTIONS: 65° wash

- WHITE (NMT/W)
- SKY (NMT/S)
- HOSPITAL BLUE (NMT/HB)
- ROYAL (NMT/R)
- NAVY (NMT/N)

Contrast Trim Smart Scrub Top

UNISEX SIZES: XS-3XL
PRODUCT CODE: NSTT

- 195 gsm
- Crossover neckline for modesty
- One left chest pocket and two lower hip pockets, all with waterproof lining
- Action back and side vents for ease of movement
- Trim to neckline and sleeves

MATERIAL:
Colours: 65% Recycled Polyester*, 35% Cotton
White: 65% Polyester, 35% Cotton

WASHING INSTRUCTIONS: 65° wash



Plain Smart Scrub Top

UNISEX SIZES: XS-3XL
PRODUCT CODE: NSTP

- 195 gsm
- Crossover neckline for modesty
- One left chest pocket and two lower hip pockets, all with waterproof lining
- Action back and side vents for ease of movement
- Self coloured trim to neckline and sleeves

MATERIAL:
Colours: 65% Recycled Polyester*, 35% Cotton
White: 65% Polyester, 35% Cotton

WASHING INSTRUCTIONS: 65° wash

- WHITE (NSTP/W)
- EAU DE NIL (NSTP/EDN)
- BOTTLE GREEN (NSTP/BG)
- TEAL (NSTP/T)
- SKY (NSTP/S)
- METRO BLUE (NSTP/MB)
- HOSPITAL BLUE (NSTP/HB)
- ROYAL (NSTP/R)
- RED (NSTP/RD)
- NAVY (NSTP/N)
- LILAC (NSTP/L)
- MAROON (NSTP/M)
- GREY (NSTP/G)
- STORM GREY (NSTP/SG)
- BLACK (NSTP/B)



Smart Scrub Trouser

UNISEX SIZES: XS-3XL
PRODUCT CODE: NSTR

- 195 gsm
- Fully elasticated waist with drawstring
- Two side pockets
- Available in three lengths

LENGTHS: Short - 29", Regular - 31", Tall - 33"

MATERIAL: 65% Recycled Polyester*, 35% Cotton

WASHING INSTRUCTIONS: 65° wash



- EAU DE NIL (NSTR/EDN)
- BOTTLE GREEN (NSTR/BG)
- TEAL (NSTR/T)
- SKY (NSTR/S)
- METRO BLUE (NSTR/MB)
- HOSPITAL BLUE (NSTR/HB)
- ROYAL (NSTR/R)
- NAVY (NSTR/N)
- PURPLE (NSTR/P)
- MAROON (NSTR/M)
- GREY (NSTR/G)
- STORM GREY (NSTR/SG)
- BLACK (NSTR/B)



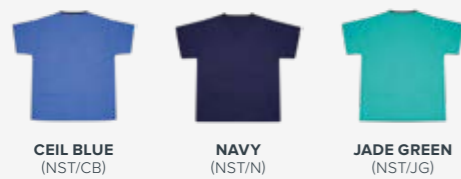
Reversible Scrub Top

UNISEX SIZES: XS-3XL
PRODUCT CODE: NST

- 145 gsm
- Reversible scrub top
- Coloured back neckline for size identification
- One hip pocket (inside and out)

MATERIAL: 65% Polyester, 35% Cotton

WASHING INSTRUCTIONS: 65° wash



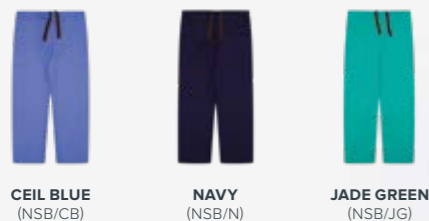
Reversible Scrub Trouser

UNISEX SIZES: XS-3XL
PRODUCT CODE: NSB

- 145 gsm
- Adjustable drawstring tie waist
- Colour coded drawstring for size identification
- One rear patch pocket

MATERIAL: 65% Polyester, 35% Cotton

WASHING INSTRUCTIONS: 65° wash



Tabard

UNISEX SIZES: XS-3XL
PRODUCT CODE: NT

- 195 gsm
- Adjustable side tabs with press stud fastening
- Large front patch pocket with two compartments

MATERIAL:
Colours: 65% Recycled Polyester*, 35% Cotton
White: 65% Polyester, 35% Cotton

WASHING INSTRUCTIONS: 65° wash

simki.

Setting a new standard in the health & wellness industry by providing comfortable and functional medical apparel, made using advanced fabrics, perfect for the modern healthcare professional.

Our innovative fabrics & design results in a unique uniform that transcends sectors whilst offering the performance, style & comfort traditionally associated with athletic garments.

-
- 28 NOVA SCRUB TOP /
NEO SCRUB JOGGER
 - 29 ARI SCRUB TOP /
ARLO SCRUB TROUSER
 - 30 MILES SCRUB TOP /
MAXWELL SCRUB JOGGER
 - 31 OSCAR SCRUB TOP /
OTTO SCRUB TROUSER



Nova Scrub Top

WOMEN'S SIZES: XS-3XL
PRODUCT CODE: BEH-4957

- V-neckline
- Functional front patch pocket
- Side seam hem vents for ease of movement

MATERIAL: 81% Poly, 15% Viscose, 4% Spandex

WASHING INSTRUCTIONS: 60° wash

- BLACK (BLK)
- NAVY (NVY)
- CHARCOAL (CHA)
- BURGUNDY (BUR)
- TEAL (TEL)
- CEIL BLUE (CBL)
- WHITE (WHT)



Neo Scrub Jogger

WOMEN'S SIZES: XS-3XL
PRODUCT CODE: BEH-4958

- Slim non-restrictive fit
- One back patch pocket
- Comfortable stretch ankle cuffs
- Stretch waistband with adjustable inner drawcord

MATERIAL: 81% Poly, 15% Viscose, 4% Spandex

WASHING INSTRUCTIONS: 60° wash

- BLACK (BLK)
- NAVY (NVY)
- CHARCOAL (CHA)
- BURGUNDY (BUR)
- TEAL (TEL)
- CEIL BLUE (CBL)
- WHITE (WHT)

Ari Scrub Top

WOMEN'S SIZES: XS-3XL
PRODUCT CODE: BEH-4955

- V-neckline
- 2 Functional welt pockets, with hidden inner pocket on right hand side
- Side seam hem vents for ease of movement

MATERIAL: 81% Poly, 15% Viscose, 4% Spandex

WASHING INSTRUCTIONS: 60° wash

- BLACK (BLK)
- NAVY (NVY)
- CHARCOAL (CHA)
- BURGUNDY (BUR)
- TEAL (TEL)
- CEIL BLUE (CBL)



Arlo Scrub Trouser

WOMEN'S SIZES: XS-3XL
PRODUCT CODE: BEH-4956

- Straight leg trouser
- 3 functional pockets
- Stretch waistband with drawcord

MATERIAL: 81% Poly, 15% Viscose, 4% Spandex

WASHING INSTRUCTIONS: 60° wash

- BLACK (BLK)
- NAVY (NVY)
- CHARCOAL (CHA)
- BURGUNDY (BUR)
- TEAL (TEL)
- CEIL BLUE (CBL)
- WHITE (WHT)

Miles Scrub Top

MEN'S SIZES: XS-2XL
PRODUCT CODE: BEH-4951

- Crew neck
- Functional front patch pocket at chest and welt pockets at side seams

MATERIAL: 81% Poly, 15% Viscose, 4% Spandex

WASHING INSTRUCTIONS: 60° wash

- BLACK (BLK)
- NAVY (NVY)
- CHARCOAL (CHA)
- BURGUNDY (BUR)
- TEAL (TEL)
- CEIL BLUE (CBL)



Maxwell Scrub Jogger

MEN'S SIZES: XS-2XL
PRODUCT CODE: BEH-4953

- 3 functional pockets
- Comfortable stretch ankle cuffs
- Elasticated waistband with drawcord

MATERIAL: 81% Poly, 15% Viscose, 4% Spandex

WASHING INSTRUCTIONS: 60° wash

- BLACK (BLK)
- NAVY (NVY)
- CHARCOAL (CHA)
- BURGUNDY (BUR)
- TEAL (TEL)
- CEIL BLUE (CBL)

Oscar Scrub Top

MEN'S SIZES: XS-2XL
PRODUCT CODE: BEH-4950

- V-neckline
- Functional welt pockets at side seams

MATERIAL: 81% Poly, 15% Viscose, 4% Spandex

WASHING INSTRUCTIONS: 60° wash

- BLACK (BLK)
- NAVY (NVY)
- CHARCOAL (CHA)
- BURGUNDY (BUR)
- TEAL (TEL)
- CEIL BLUE (CBL)



Otto Scrub Trouser

MEN'S SIZES: XS-2XL
PRODUCT CODE: BEH-4952

- Straight leg trouser
- 3 functional pockets
- Stretch waistband with drawcord

MATERIAL: 81% Poly, 15% Viscose, 4% Spandex

WASHING INSTRUCTIONS: 60° wash

- BLACK (BLK)
- NAVY (NVY)
- CHARCOAL (CHA)
- BURGUNDY (BUR)
- TEAL (TEL)
- CEIL BLUE (CBL)

Beauty & Wellness

After decades of working for the health & beauty industry, we offer feel-good uniforms for every-body. Specially designed for salons, spas & independent therapists. Choose from our range of comfortable, figure-inclusive styles.

34-35 CLARA / LOUISE
 36-37 CELESTE / NINA
 38-39 ELIZA / MADELEINE
 40-41 GISELE / ELENA
 42-43 SARA / LENA
 44-45 EMMA / DIAMANTE
 46-47 HAYLEY / JULIETTE
 48-49 MANON / MAYA
 50-51 BEAU / COCO
 52-53 EVE / LEA
 54-55 AMIE / CHLOE
 56-57 ILA / IVY / LILI / ETTA
 58-59 STEPHANE / LEROY / FOB WATCH





Clara

WOMEN'S SIZES: 6-24
PRODUCT CODE: LBCLARA

- Modern take on collar and lapel neckline
- Functional wrap design with adjustable buttonhole elastic at waist
- Notch sleeves for movement
- Side vents

MATERIAL: 100% Polyester

WASHING INSTRUCTIONS:
Easy care, wash up to 60°, cool iron if necessary

- BLACK (BK)
- GREY (GR)
- NAVY (NX)
- SAGE (SGE)

Louise

WOMEN'S SIZES: 6-24
PRODUCT CODE: LBLOUISE

- Flattering wrap over V-neckline
- Wrap over sleeve design for movement
- Back zip fastening
- Side vents

MATERIAL: 100% Polyester

WASHING INSTRUCTIONS:
Easy care, wash up to 60°, cool iron if necessary

- BLACK (BK)
- GREY (GR)
- NAVY (NX)
- SAGE (SGE)



Celeste

WOMEN'S SIZES: 4-32
PRODUCT CODE: LBCELESTE

- Fitted tunic
- Flattering V-neckline
- Notch sleeves for movement
- Side vents
- Back zip fastening
- Co-ordinates with Nina, Sara, Lena, Manon & Maya

MATERIAL: 100% Soft Twill Polyester

WASHING INSTRUCTIONS:
Easy care, wash up to 60°, cool iron if necessary



Nina

WOMEN'S SIZES: 4-32
PRODUCT CODE: LBNINA

- Fitted tunic
- Flattering V-neckline
- Notch sleeves for movement
- Side vents
- Back zip fastening
- 2 Side pockets
- Co-ordinates with Celeste, Sara, Lena, Manon & Maya

MATERIAL: 100% Soft Twill Polyester

WASHING INSTRUCTIONS:
Easy care, wash up to 60°, cool iron if necessary





Eliza

WOMEN'S SIZES: 4-32
PRODUCT CODE: LBELIZA

- Fitted tunic
- Longer length
- Faux crystal detail
- Side vents
- Back zip fastening
- Matches with Madeleine dress

MATERIAL: 100% Soft Twill Polyester

WASHING INSTRUCTIONS:
Easy care, wash up to 60°, cool iron if necessary



BLACK (BK)



PLUM (PM)



NAVY (NX)



GREY (GR)

Madeleine

WOMEN'S SIZES: 6-32
PRODUCT CODE: LBMADEL

- Fitted dress
- Faux crystal detail
- Kick pleat for movement
- Back zip fastening
- Matches with Eliza tunic

MATERIAL: 100% Soft Twill Polyester

WASHING INSTRUCTIONS:
Easy care, wash up to 60°, cool iron if necessary



BLACK (BK)



PLUM (PM)



WHITE (WH)



GREY (GR)



NAVY (NX)





Gisele

WOMEN'S SIZES: 4-32
PRODUCT CODE: LBGISELE
*Sage available in sizes 6-26

- Faux wrap detail with side tie
- Pleat detail on sleeve
- Back zip fastening

MATERIAL: 100% Soft Twill Polyester

WASHING INSTRUCTIONS:
Easy care, wash up to 60°, cool iron if necessary



Elena

WOMEN'S SIZES: 4-32
PRODUCT CODE: LBELENA
*Sage available in sizes 6-26

- Faux wrap detail with side tie
- Pleat detail on sleeve
- Back zip fastening
- Back vent for ease of movement

MATERIAL: 100% Soft Twill Polyester

WASHING INSTRUCTIONS:
Easy care, wash up to 60°, cool iron if necessary





Sara

WOMEN'S SIZES: 4-32
PRODUCT CODE: LBSARA

- Fitted tunic
- Flattering V-neckline
- Longer length
- Notch sleeves for movement
- Side vents
- Back zip fastening
- Co-ordinates with Celeste, Nina, Lena, Manon & Maya

MATERIAL: 100% Soft Twill Polyester

WASHING INSTRUCTIONS:
Easy care, wash up to 60°, cool iron if necessary



BLACK (BK)



PLUM (PM)



NAVY (NX)



GREY (GR)



Lena

WOMEN'S SIZES: 4-32
PRODUCT CODE: LBLENA

- Fitted tunic
- Flattering V-neckline
- Longer length
- Notch sleeves for movement
- Side vents
- Back zip fastening
- 2 side pockets
- Co-ordinates with Celeste, Nina, Sara, Manon & Maya

MATERIAL: 100% Soft Twill Polyester

WASHING INSTRUCTIONS:
Easy care, wash up to 60°, cool iron if necessary



BLACK (BK)



PLUM (PM)



NAVY (NX)



GREY (GR)

Emma

WOMEN'S SIZES: 4-32
PRODUCT CODE: LBEMMA

- Asymmetrical neckline
- Pleat detail
- Side vents
- Back zip fastening

MATERIAL: 100% Soft Twill Polyester

WASHING INSTRUCTIONS:
Easy care, wash up to 60°, cool iron if necessary



Diamante

WOMEN'S SIZES: 4-32
PRODUCT CODE: LBDIAMANTE

- Diamante detail
- Front zip fastening
- Side vents

MATERIAL: 100% Soft Twill Polyester

WASHING INSTRUCTIONS:
Easy care, wash up to 60°, cool iron if necessary



Hayley

WOMEN'S SIZES: 4-32
PRODUCT CODE: LBHAYLEY

- Flattering V-neckline
- Front seam detail
- Side vents for ease of movement
- Back zip fastening

MATERIAL: 100% Soft Twill Polyester

WASHING INSTRUCTIONS:
Easy care, wash up to 60°, cool iron if necessary



BLACK (BK)



GREY (GR)



Juliette

WOMEN'S SIZES: 6-32
PRODUCT CODE: LBJUL

- Classic square neck design
- Princess seams
- Back zip fastening

MATERIAL: 100% Soft Twill Polyester

WASHING INSTRUCTIONS:
Easy care, wash up to 60°, cool iron if necessary



BLACK (BK)



NAVY (NX)



GREY (GR)



Manon

WOMEN'S SIZES: 6-32
PRODUCT CODE: LBMANON

- Fitted dress
- Flattering V-neckline
- Notch sleeves for movement
- Kick pleat
- Back zip fastening
- Co-ordinates with Celeste, Nina, Sara, Lena & Maya

MATERIAL: 100% Soft Twill Polyester

WASHING INSTRUCTIONS:
Easy care, wash up to 60°, cool iron if necessary



BLACK (BK)



NAVY (NX)



GREY (GR)



Maya

WOMEN'S SIZES: 6-32
PRODUCT CODE: LBMAYA

- Fitted dress
- Flattering V-neckline
- Notch sleeves for movement
- Kick pleat
- Back zip fastening
- Co-ordinates with Celeste, Nina, Sara, Lena & Manon

MATERIAL: 100% Soft Twill Polyester

WASHING INSTRUCTIONS:
Easy care, wash up to 60°, cool iron if necessary



BLACK (BK)



PLUM (PM)



NAVY (NX)



GREY (GR)



BLACK (BK)



PLUM (PM)



NAVY (NX)



GREY (GR)



Beau

WOMEN'S SIZES: 4-32
PRODUCT CODE: LBBEAU

- Asymmetrical neckline
- Crystal detail
- Concealed front zip fastening
- Side vents

MATERIAL: 100% Soft Twill Polyester

WASHING INSTRUCTIONS:
Easy care, wash up to 60°, cool iron if necessary



Coco

WOMEN'S SIZES: 6-32
PRODUCT CODE: LBCOCO

- Angled neckline
- Peplum waist detail
- Back zip fastening

MATERIAL: 100% Soft Twill Polyester

WASHING INSTRUCTIONS:
Easy care, wash up to 60°, cool iron if necessary



BLACK (BK)



PLUM (PM)



NAVY (NX)



GREY (GR)



Eve

WOMEN'S SIZES: 4-32
PRODUCT CODE: LBEVEZ

- V-neckline
- Contrasting trim
- Front zip fastening

MATERIAL: 100% Polyester

WASHING INSTRUCTIONS:
Easy care, wash up to 60°, cool iron if necessary



BLACK (BK)



BLACK/RED (BR)



BLACK/BLUE (BB)



BLACK/PURPLE (BP)



BLACK/CERISE (BC)



Lea

WOMEN'S SIZES: 4-32
PRODUCT CODE: LBLEA

- Mandarin collar
- Asymmetric design
- Concealed zip fastening at front with stud closure
- Side vents for ease of movement

MATERIAL: 100% Soft Twill Polyester

WASHING INSTRUCTIONS:
Easy care, wash up to 60°, cool iron if necessary



BLACK (BK)



PLUM (PM)



NAVY (NX)



GREY (GR)

Amie

WOMEN'S SIZES: 4-32
PRODUCT CODE: LBAMIE

- Sleeveless wrap tunic
- Perfect for layering, as worn in image over a long sleeve t-shirt
- Side tie fastening
- Side vents for movement

MATERIAL: 100% Soft Twill Polyester

WASHING INSTRUCTIONS:
 Easy care, wash up to 60°, cool iron if necessary

● **BLACK (BK)**



Chloe

WOMEN'S SIZES: S-XL
PRODUCT CODE: LBCHLOE

- Maternity tunic
- Square neckline
- Faux button fastening
- Back tie to allow the wearer to adjust the tunic sizing

MATERIAL: 100% Soft Twill Polyester

WASHING INSTRUCTIONS:
 Easy care, wash up to 60°, cool iron if necessary



BLACK (BK)

WHITE (WH)

GREY (GR)

Ila

WOMEN'S SIZES: 4-32
PRODUCT CODE: LBILA
*Sage available in sizes 6-26

- Concealed elasticated waistband
- Slim leg trouser
- High waist
- Front zip fastening

LENGTHS:
Size 6-24 – Available in 28" Hemmed, 30" Hemmed, 33" Unhemmed
Sizes 26-32 – Available in 33" Unhemmed only

MATERIAL: 100% Soft Twill Polyester

WASHING INSTRUCTIONS:
Easy care, wash up to 60°, cool iron if necessary



BLACK (BK) NAVY (NX) GREY (GR) PLUM (PM) SAGE (SGE)*



Etta

WOMEN'S SIZES: 6-32
PRODUCT CODE: LBETTA

- Slim leg crop trouser
- High waist
- Notch ankle detail
- Front zip fastening

MATERIAL: 100% Soft Twill Polyester

WASHING INSTRUCTIONS:
Easy care, wash up to 60°, cool iron if necessary



BLACK (BK) NAVY (NX)



Ivy

WOMEN'S SIZES: 6-24
PRODUCT CODE: LBIVY

- Culotte style trouser
- Concealed elasticated waistband
- Breezy loose leg design
- High waist
- Invisible front zip fastening
- Pockets at side seam

MATERIAL: 100% Soft Twill Polyester

WASHING INSTRUCTIONS:
Easy care, wash up to 60°, cool iron if necessary

- BLACK (BK)
- GREY (GR)
- NAVY (NX)
- SAGE (SGE)



Lili

WOMEN'S SIZES: 4-32
PRODUCT CODE: LBLILI

- Straight leg trouser
- High waist
- Side zip fastening

LENGTHS:
Size 6-24 – Available in 29" Hemmed, 31" Hemmed, 34" Unhemmed
Sizes 26-32 – Available in 34" Unhemmed only

MATERIAL: 100% Soft Twill Polyester

WASHING INSTRUCTIONS:
Easy care, wash up to 60°, cool iron if necessary



GREY (GR) PLUM (PM) BLACK (BK) WHITE (WH) NAVY (NX)



Stephane

MEN'S SIZES: S-XL
PRODUCT CODE: LBSTEP

- Fitted shirt
- Grandad collar
- Front button fastening
- Turn up sleeve detail

MATERIAL: 100% Soft Twill Polyester

WASHING INSTRUCTIONS:
Easy care, wash up to 60°, cool iron if necessary



BLACK (BK)



WHITE (WH)



NAVY (NX)



GREY (GR)

Leroy

MEN'S SIZES: S-XL
PRODUCT CODE: LBLEROY

- Straight leg trouser
- Elasticated waistband
- Front button fastening
- Available in 34" leg

MATERIAL: 100% Soft Twill Polyester

WASHING INSTRUCTIONS:
Easy care, wash up to 60°, cool iron if necessary



BLACK (BK)



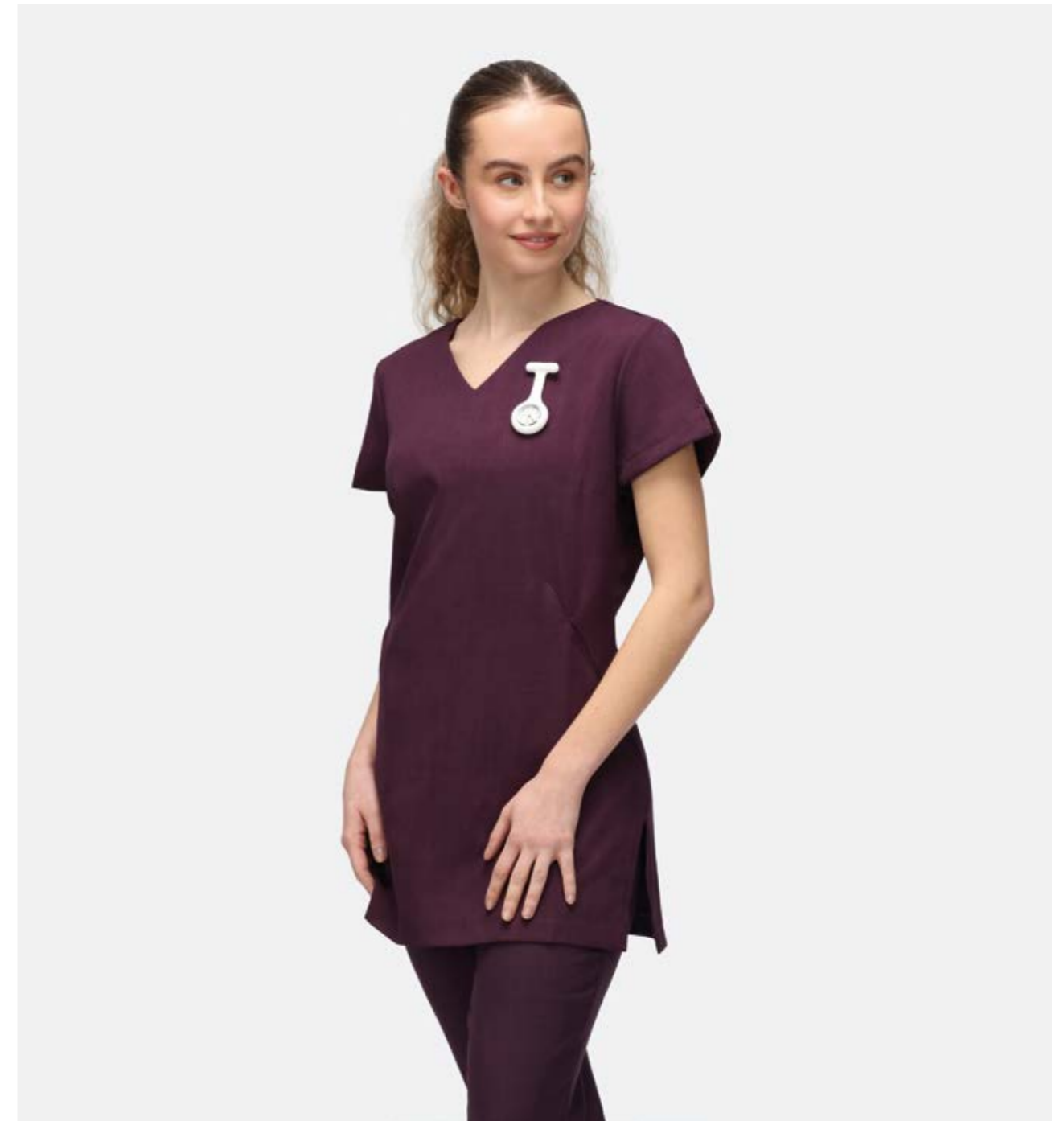
WHITE (WH)



NAVY (NX)



GREY (GR)



Fob Watch

PRODUCT CODE: LFSILFOB (SILICON)
BTAR1101 (SILVER)

- Silicon or silver fob watch

SILICON FOB WATCH AVAILABLE IN THE BELOW COLOURS:

- BLACK (BK)
- PURPLE (PU)
- WHITE (WH)
- CERISE (CE)
- NAVY (NV)

Chef's Wear Collection

Bringing quality to the kitchen. High quality fabrics, designed to last, alongside practical and wearable designs to make the team look great. Offering a straightforward and value for money option to the table.

-
- 62 LONG SLEEVE CHEF'S JACKET
 - 63 SHORT SLEEVE CHEF'S JACKET / CHEF'S TROUSER
 - 64 SKULL CAP
 - 65 ADJUSTABLE APRON

*Whilst we transition to recycled polyester some older stock will be non-recycled.





Long Sleeve Jacket

UNISEX SIZES: 2XS-4XL
PRODUCT CODE: HHCJLS

- 195 gsm
- Long sleeve with pen pocket
- Concealed stud fastening
- Underarm vent

MATERIAL: Black: 65% Recycled Polyester*, 35% Cotton
White: 65% Polyester, 35% Cotton

WASHING INSTRUCTIONS: 65° wash



BLACK (BLK)



WHITE (WHT)

Short Sleeve Jacket

UNISEX SIZES: 2XS-4XL
PRODUCT CODE: HHCJSS

- 195 gsm
- Short sleeve with pen pocket
- Concealed stud fastening
- Underarm vent

MATERIAL: Black: 65% Recycled Polyester*, 35% Cotton
White: 65% Polyester, 35% Cotton

WASHING INSTRUCTIONS: 65° wash



BLACK (BLK)



WHITE (WHT)

Chef's Wear Trouser

UNISEX SIZES: 2XS-4XL
PRODUCT CODE: HHCT

- 195 gsm
- Elasticated drawstring waist
- 2 side pockets and 1 back patch pocket

MATERIAL: Black: 65% Recycled Polyester*, 35% Cotton
Check: 65% Polyester, 35% Cotton

WASHING INSTRUCTIONS: 65° wash



BLACK (BLK)



BLUE/WHITE CHECK (CHK)





Skull Cap

UNISEX SIZES: ONE SIZE
 PRODUCT CODE: HHCS

• 195 gsm

MATERIAL: Black 65% Recycled Polyester*, 35% Cotton
 White & Check: 65% Polyester, 35% Cotton

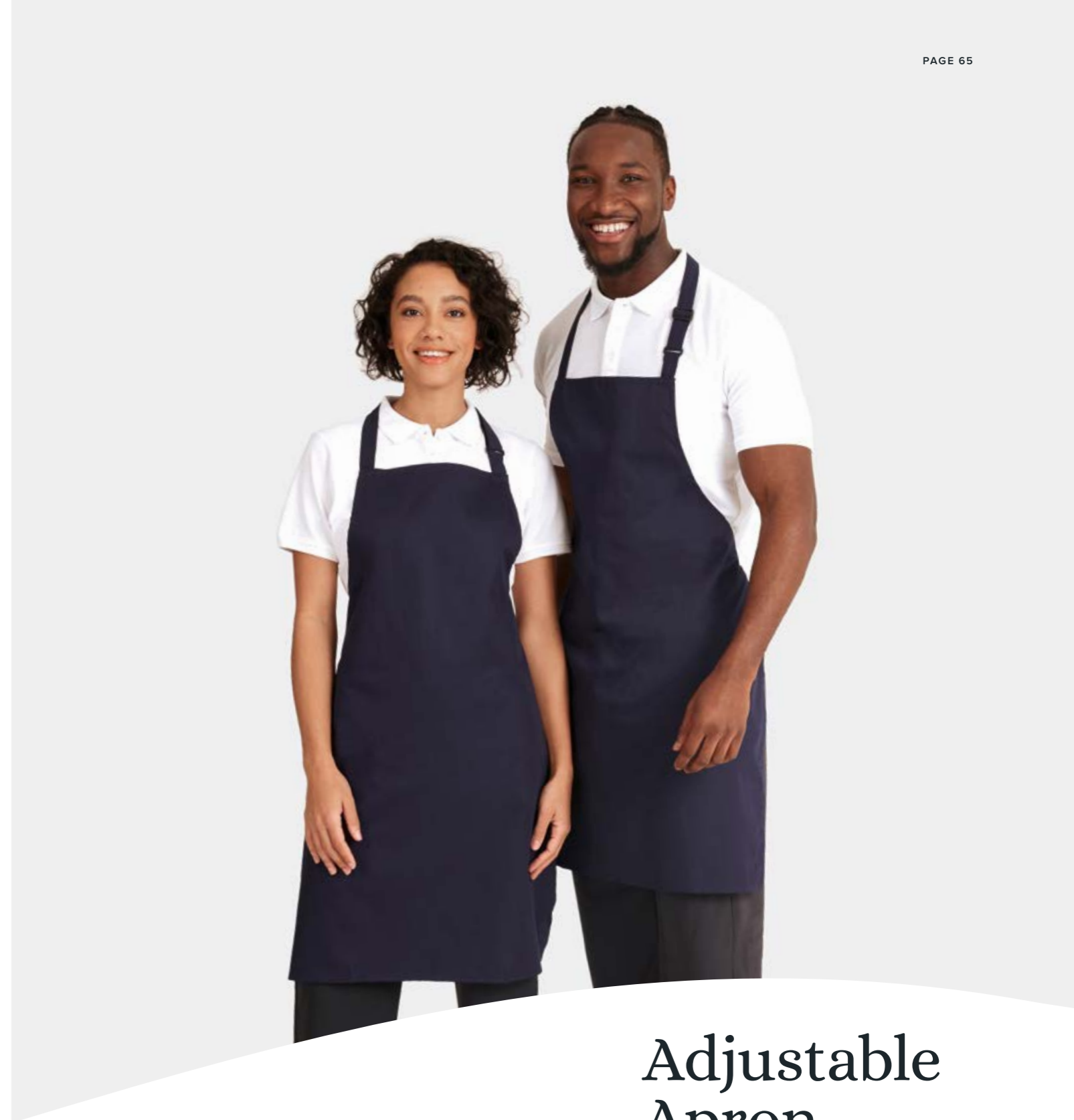
WASHING INSTRUCTIONS: 65° wash



BLACK (BLK)

WHITE (WHT)

BLUE/ WHITE CHECK (CHECK)



Adjustable Apron

UNISEX SIZES: ONE SIZE
 PRODUCT CODE: HHAA

- 195 gsm
- Adjustable neckband

MATERIAL: 65% Recycled Polyester*, 35% Cotton

WASHING INSTRUCTIONS: 65° wash

- COLOURS:
- BLACK (BLK)
 - NAVY (NVY)
 - NATURAL (NAT)

Eco Tech Collection

Behrens' first sustainably produced teamwear range, Eco Tech is made from recycled premium technical fabrics. Available in men's, women's, unisex, and youth sizes to prioritise comfort and fit both on and off the field.

68-69 MEN'S ECO TECH TEE / WOMEN'S ECO TECH TEE
70-71 UNISEX ECO TECH POLO / UNISEX ECO TECH HOODIE
72-73 MEN'S ECO TECH MIDLAYER / WOMEN'S ECO TECH MIDLAYER
74-75 MEN'S ECO TECH SHORT / WOMEN'S ECO TECH 2-IN-1 SHORT
76-77 MEN'S ECO TECH PANT / WOMEN'S ECO TECH LEGGING
78-79 MEN'S ECO TECH GILET / WOMEN'S ECO TECH GILET



MEN'S
**Eco Tech
Tee**

YOUTH SIZES: SY, MY, LY, XLY
ADULT SIZES: S, M, L, XL, 2XL, 3XL
PRODUCT CODE: ECO-TECH-TEE

- 160 gsm
- Tailored fit giving the perfect balance between relaxed and athletic fit
- Fully-recycled, lightweight, moisture wicking fabric
- Versatile for both on and off-field use

MATERIAL: 100% Recycled Polyester

- BLACK** (ECO-TECH-TEE-BLK)
- NAVY** (ECO-TECH-TEE-NVY)



WOMEN'S
**Eco Tech
Tee**

WOMEN'S SIZES: 6, 8, 10, 12, 14, 16, 18
PRODUCT CODE: ECO-TECH-TEE-F

- 160 gsm
- Tailored fit giving the perfect balance between relaxed and athletic fit
- Fully-recycled, lightweight, moisture wicking fabric
- Versatile for both on and off-field use

MATERIAL: 100% Recycled Polyester

- BLACK** (ECO-TECH-TEE-F-BLK)
- NAVY** (ECO-TECH-TEE-F-NVY)



UNISEX

Eco Tech Polo

YOUTH SIZES: SY, MY, LY, XLY
ADULT SIZES: S, M, L, XL, 2XL, 3XL
PRODUCT CODE: ECO-TECH-POLO

- 160 gsm
- Tailored fit giving the perfect balance between relaxed and athletic fit
- Fully-recycled, lightweight, moisture wicking fabric
- Versatile for both on and off-field use
- Low profile sports polo collar with 3-point snap fastening for maximum efficiency

MATERIAL: 100% Recycled Polyester

- BLACK** (ECO-TECH-POLO-BLK)
- NAVY** (ECO-TECH-POLO-NVY)

UNISEX

Eco Tech Hoodie

YOUTH SIZES: SY, MY, LY, XLY
ADULT SIZES: S, M, L, XL, 2XL, 3XL
PRODUCT CODE: ECO-TECH-HOODIE

- 250 gsm
- Quick dry, technical hoodie
- Lightweight, high-stretch, brushback material
- Relaxed fit for the ultimate comfort
- Perfect pre or post match layer or a leisurewear must-have

MATERIAL: 77% Recycled Polyester, 23% Elastane

- BLACK** (ECO-TECH-HOODIE-BLK)
- NAVY** (ECO-TECH-HOODIE-NVY)



MEN'S

Eco Tech Midlayer

YOUTH SIZES: SY, MY, LY, XLY
ADULT SIZES: S, M, L, XL, 2XL, 3XL
PRODUCT CODE: ECO-TECH-MIDLAYER

- 250 gsm
- Brushed back fabric for comfort
- Tailored fit giving the perfect balance between relaxed and athletic fit
- Moisture-wicking performance fabric
- Ergonomic 1/4 zip collar with raglan sleeve for maximum comfort and fit
- Quick-dry, 4-way stretch material to support full range of body movement

MATERIAL: 77% Recycled Polyester, 23% Elastane

- **BLACK** (ECO-TECH-MIDLAYER-BLK)
- **NAVY** (ECO-TECH-MIDLAYER-NVY)



WOMEN'S

Eco Tech Midlayer

WOMEN'S SIZES: 6, 8, 10, 12, 14, 16, 18
PRODUCT CODE: ECO-TECH-MIDLAYER-F

- 250 gsm
- Brushed back fabric for comfort
- Tailored fit giving the perfect balance between relaxed and athletic fit
- Moisture-wicking performance fabric
- Ergonomic 1/4 zip collar with raglan sleeve for maximum comfort and fit
- Quick-dry, 4-way stretch material to support full range of body movement

MATERIAL: 77% Recycled Polyester, 23% Elastane

- **BLACK** (ECO-TECH-MIDLAYER-F-BLK)
- **NAVY** (ECO-TECH-MIDLAYER-F-NVY)





MEN'S

Eco Tech Short

YOUTH SIZES: SY, MY, LY, XLY
 ADULT SIZES: S, M, L, XL, 2XL, 3XL
 PRODUCT CODE: ECO-TECH-SHORT

- 160 gsm
- Lightweight, high stretch fabric for perfect fit and comfort
- Rear mesh panel to enhance breathability
- Diamond gusset for maximum comfort
- Quick-dry, soft touch material

MATERIAL: 90% Recycled Polyester, 10% Elastane

- BLACK (ECO-TECH-SHORT-BLK)
- NAVY (ECO-TECH-SHORT-NVY)



WOMEN'S

Eco Tech 2-in-1 Short

WOMEN'S SIZES: 6, 8, 10, 12, 14, 16, 18
 PRODUCT CODE: ECO-TECH-2IN1SHORT

- 160 gsm outer layer, 200gsm inner short
- Lightweight, high stretch fabric for perfect fit
- Rear mesh panel to enhance breathability
- Built-in lycra undershorts for modesty and comfort
- Quick-dry, soft touch material

MATERIAL: Outer layer: 90% Recycled Polyester, 10% Elastane
 Inner Short: 88% Recycled Polyester, 12% Elastane

- BLACK (ECO-TECH-2IN1SHORT-BLK)
- NAVY (ECO-TECH-2IN1SHORT-NVY)



MEN'S
**Eco Tech
Pant**

YOUTH SIZES: SY, MY, LY, XLY
ADULT SIZES: S, M, L, XL, 2XL, 3XL
PRODUCT CODE: ECO-TECH-PANT

- 250 gsm
- Constructed using lightweight, high-stretch, brushback material for exceptional comfort
- Tapered fit with low profile calf zip
- Fully-recycled, moisture wicking fabric
- Open side pockets

MATERIAL: 77% Recycled Polyester, 23% Elastane

- **BLACK** (ECO-TECH-PANT-BLK)
- **NAVY** (ECO-TECH-PANT-NVY)



WOMEN'S
**Eco Tech
Legging**

WOMEN'S SIZES: 6, 8, 10, 12, 14, 16, 18
PRODUCT CODE: ECO-TECH-LEGGING

- 240 gsm
- Lightweight, high-stretch material for the perfect fit
- Constructed with a deep self-fabric waistband for ultimate comfort
- Concealed phone pocket
- Premium quick-dry and breathable fabric

MATERIAL: 72% Recycled Nylon, 28% Elastane

- **BLACK** (ECO-TECH-LEGGING-BLK)
- **NAVY** (ECO-TECH-LEGGING-NVY)



MEN'S

Eco Tech Gilet

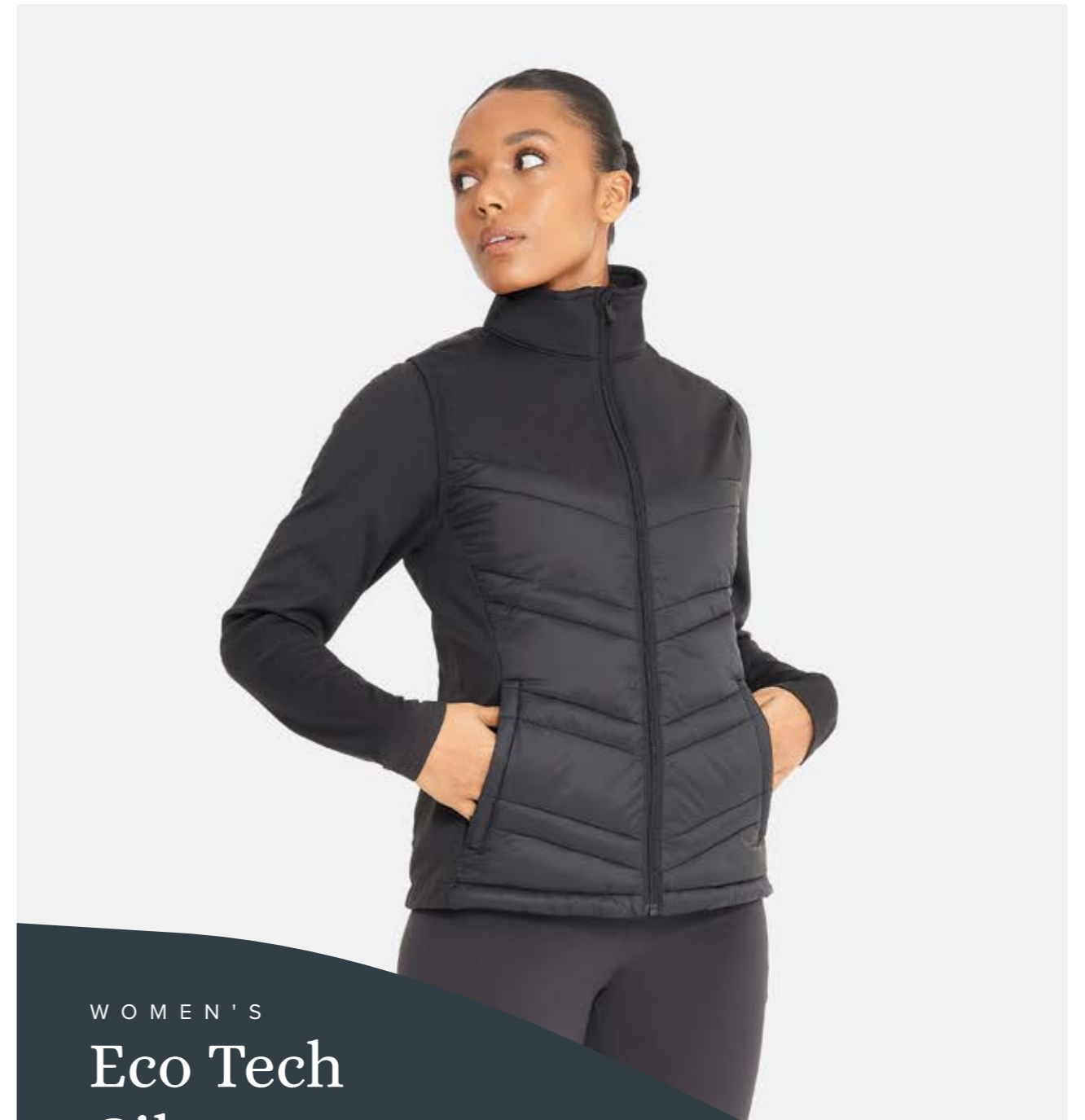
ADULT SIZES: S, M, L, XL, 2XL, 3XL
PRODUCT CODE: ECO-TECH-GILET

- Lightweight, versatile full zip gilet
- Ideal second layer for warmth and protection from the elements
- Concealed zip pockets
- Flat chest panels to allow for easy embellishment

MATERIAL:

Main fabric: 380T, 100% Recycled Nylon (36gsm)
 Panel fabric: 250gsm, 77% Recycled Polyester, 23% Elastane

- **BLACK** (ECO-TECH-GILET-BLK)
- **NAVY** (ECO-TECH-GILET-NVY)



WOMEN'S

Eco Tech Gilet

WOMEN'S SIZES: 8, 10, 12, 14, 16, 18
PRODUCT CODE: ECO-TECH-GILET-F

- Lightweight, versatile full zip gilet
- Ideal second layer for warmth and protection from the elements
- Concealed phone pocket
- Easy embroidery access
- Flat chest panels to allow for easy embellishment

MATERIAL: Main fabric: 380T, 100% Recycled Nylon (36gsm)
 Panel fabric: 250gsm, 77% Recycled Polyester, 23% Elastane

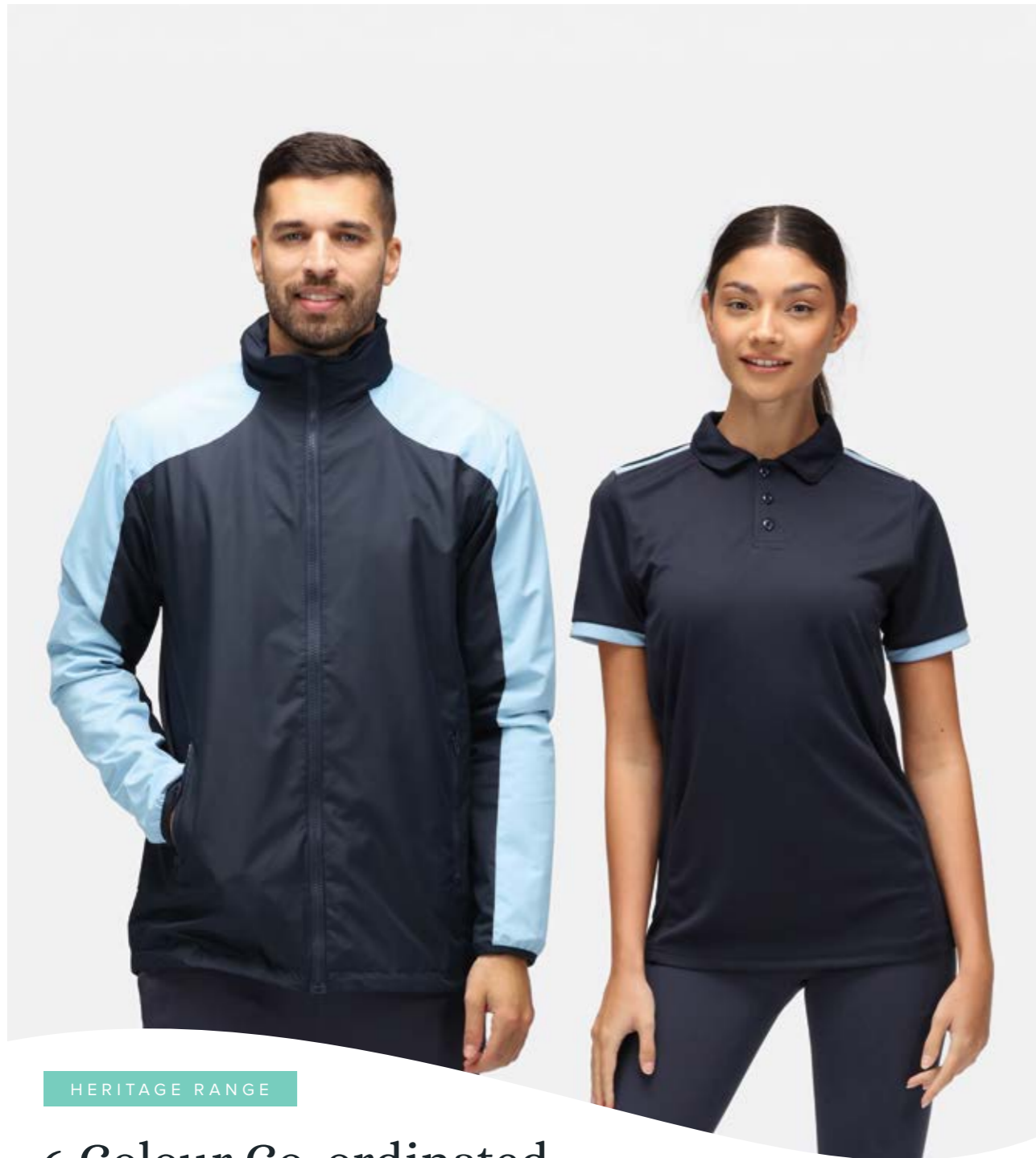
- **BLACK** (ECO-TECH-GILET-F-BLK)
- **NAVY** (ECO-TECH-GILET-F-NVY)

Sports & Leisurewear Range

Behrens Sportswear has been designing a wide range of stock-supported teamwear since 2005. They're now known as the go-to for white label, colour-coordinated sports & leisurewear apparel that moves with the wearer to maximise performance.



83	HERITAGE TEE / PLAIN HERITAGE TEE
84-85	HERITAGE POLO / HERITAGE TECH TOP / HERITAGE HOODIE
86-87	PRO TRACK TOP / PRO WINDBREAKER
88-89	HERITAGE SHORT / HERITAGE SKORT
90-91	LEISURE SHORT / TRAINING SHORT / PRO RUGBY SHORT / RUGBY SHORT
92-93	SKINNY PANT / TRACK PANT / LEISURE PANT / TECH TOP
94-95	SUB COAT / STADIUM JACKET / MATCHDAY JACKET
96-97	THERMAL ROBE
98-99	ECO TECH SHORT SLEEVE CRICKET SHIRT / ECO TECH LONG SLEEVE CRICKET SHIRT / ECO TECH CRICKET TROUSERS
100-101	HYBRID DUFFLE BAG / HYBRID BACKPACK
102-103	PLAYER BACKPACK / RUCKSACK / PLAYER HOLDALL / WHEELIE TEAM KITBAG / XL TEAM KITBAG



HERITAGE RANGE

6 Colour Co-ordinated Teamwear Styles

AVAILABLE IN UP TO 11 DIFFERENT COLOURWAYS



Heritage Tee

YOUTH SIZES: XSB, SB, MB, LB, XLB
ADULT SIZES: S, M, L, XL, 2XL, 3XL
PRODUCT CODE: HER-TEE

- 150 gsm
- Technical breathable eyelet fabric
- Quick dry moisture management technology
- Antimicrobial fibres to prevent odours developing
- Sports crew neck with set in sleeves
- Ideal for embroidery or print

MATERIAL: 100% Polyester

- **BLACK/AMBER** (HER-TEE-BLKAMBR)
- **BLACK/EMERALD** (HER-TEE-BLKEMLD)
- **BLACK/RED** (HER-TEE-BLKRED)
- **BLACK/SILVER** (HER-TEE-BLKSLVR)
- **BLACK/MAROON** (HER-TEE-BLKMAR)
- **BLACK/ROYAL** (HER-TEE-BLKRYL)
- **NAVY/MAROON** (HER-TEE-NVYMAR)
- **NAVY/SILVER** (HER-TEE-NVYSLVR)
- **NAVY/SKY** (HER-TEE-NVYSKY)
- **NAVY/RED** (HER-TEE-NVYRED)
- **ROYAL/YELLOW** (HER-TEE-RYLYEL)



Plain Heritage Tee

YOUTH SIZES: MB, LB, XLB
ADULT SIZES: XS, S, M, L, XL, 2XL, 3XL
PRODUCT CODE: HER-TEE

- 150 gsm
- Technical breathable eyelet fabric
- Quick dry moisture management technology
- Antimicrobial fibres to prevent odours developing
- Sports crew neck with set in sleeves
- Ideal for embroidery or print

MATERIAL: 100% Polyester



BLACK
(HER-TEE-BLK)

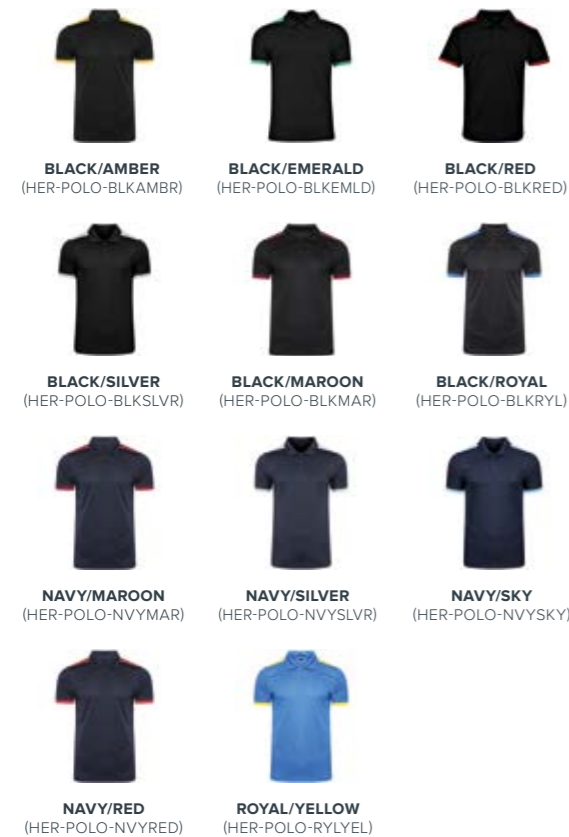
NAVY
(HER-TEE-NVY)

Heritage Polo

YOUTH SIZES: XSB, SB, MB, LB, XLB
ADULT SIZES: S, M, L, XL, 2XL, 3XL
PRODUCT CODE: HER-POLO

- 150 gsm
- Technical breathable eyelet fabric
- Quick dry moisture management technology
- Antimicrobial fibers to prevent odours developing
- Self-fabric collar with 3 button placket
- Ideal for embroidery or print

MATERIAL: 100% Polyester



Heritage Tech Top

YOUTH SIZES: MB, LB, XLB
ADULT SIZES: S, M, L, XL, 2XL, 3XL
PRODUCT CODE: HER-TECHTOP

- 240 gsm
- Tech bonded fabric with water repellent outer
- Quick dry antibacterial coating
- Brushed inner fleece
- ¼ zip neck, dropped tail and bound cuffs

MATERIAL: 100% Polyester

- **BLACK/EMERALD** (HER-TECHTOP-BLKEMLD)
- **BLACK/RED** (HER-TECHTOP-BLKRED)
- **NAVY/SKY** (HER-TECHTOP-NVYSKY)
- **NAVY/RED** (HER-TECHTOP-NVYRED)



Heritage Hoodie

YOUTH SIZES: XSB, SB, MB, LB, XLB
ADULT SIZES: S, M, L, XL, 2XL, 3XL
PRODUCT CODE: HER-HOOD

- 240 gsm
- Tech bonded fabric
- Brushed internal fleece
- Contrast shoulder panels with silver reflective piping
- 2 piece hood with contrast hood lining
- 2 zipped side pockets and ¼ zip placket
- Bonded cuff and draw cord hem

MATERIAL: 100% Polyester

- **BLACK/AMBER** (HER-HOOD-BLKAMBR)
- **BLACK/EMERALD** (HER-HOOD-BLKEMLD)
- **BLACK/RED** (HER-HOOD-BLKRED)
- **BLACK/SILVER** (HER-HOOD-BLKSLVR)
- **BLACK/MAROON** (HER-HOOD-BLKMAR)
- **BLACK/ROYAL** (HER-HOOD-BLKRYL)
- **NAVY/MAROON** (HER-HOOD-NVYMAR)
- **NAVY/SILVER** (HER-HOOD-NVYSLVR)
- **NAVY/SKY** (HER-HOOD-NVYSKY)
- **NAVY/RED** (HER-HOOD-NVYRED)
- **ROYAL/YELLOW** (HER-HOOD-RYLYEL)

Pro Track Top

YOUTH SIZES: MB, LB, XLB
ADULT SIZES: S, M, L, XL, 2XL, 3XL
PRODUCT CODE: PRO-TKT

- 110 gsm
- PU (Polyurethane) clear coating
- Shower resistant and wind resistant
- Mesh inner lining
- Concealed hood
- Concealed embroidery access for easy branding

MATERIAL: 100% Polyester Ripstop

- **BLACK/AMBER** (PRO-TKT-BLKAMBR)
- **BLACK/ EMERALD** (PRO-TKT-BLKEMLD)
- **BLACK/RED** (PRO-TKT-BLKRED)
- **BLACK/SILVER** (PRO-TKT-BLKSLVR)
- **BLACK/MAROON** (PRO-TKT-BLKMAR)
- **BLACK/ROYAL** (PRO-TKT-BLKRYL)
- **NAVY/MAROON** (PRO-TKT-NVYMAR)
- **NAVY/SILVER** (PRO-TKT-NVYSLVR)
- **NAVY/SKY** (PRO-TKT-NVYSKY)
- **NAVY/RED** (PRO-TKT-NVYRED)



SIMILAR TRACK JACKET
AVAILABLE IN ROYAL/YELLOW



YOUTH SIZES: XSB, SB, MB, LB, XLB
ADULT SIZES: S, M, L, XL, 2XL, 3XL
PRODUCT CODE: CT-TKTOP-RYLYEL

Pro Windbreaker

YOUTH SIZES: MB, LB, XLB
ADULT SIZES: S, M, L, XL, 2XL, 3XL
PRODUCT CODE: PRO-TRN

- 110 gsm
- PU (Polyurethane) clear coating
- Shower resistant and wind resistant
- Mesh inner lining
- Reinforced seams and draw cord adjusters at hem
- Concealed embroidery access for easy branding

MATERIAL: 100% Polyester Ripstop

- **BLACK/ EMERALD** (PRO-TRN-BLKEMLD)
- **BLACK/AMBER** (PRO-TRN-BLKAMBR)
- **BLACK/RED** (PRO-TRN-BLKRED)
- **BLACK/SILVER** (PRO-TRN-BLKSLVR)
- **BLACK/MAROON** (PRO-TRN-BLKMAR)
- **BLACK/ROYAL** (PRO-TRN-BLKRYL)
- **NAVY/MAROON** (PRO-TRN-NVYMAR)
- **NAVY/SILVER** (PRO-TRN-NVYSLVR)
- **NAVY/SKY** (PRO-TRN-NVYSKY)
- **NAVY/RED** (PRO-TRN-NVYRED)



SIMILAR WINDBREAKER
AVAILABLE IN ROYAL/YELLOW



YOUTH SIZES: XSB, SB, MB, LB, XLB
ADULT SIZES: S, M, L, XL, 2XL, 3XL
PRODUCT CODE: CT-TRNTOP-RYLYEL

Heritage Short

YOUTH SIZES: MB, LB, XLB
ADULT SIZES: S, M, L, XL, 2XL, 3XL
PRODUCT CODE: HER-SHORT

- 150 gsm
- Elasticated waistband
- Technical breathable eyelet fabric
- Quick dry moisture management technology
- Antimicrobial fibres to prevent odours developing

MATERIAL: 100% Polyester



BLACK
(HER-SHORT-BLK)



NAVY
(HER-SHORT-NVY)



Heritage Skort

YOUTH SIZES: MY, LY, XLY
ADULT SIZES: XS, S, M, L, XL, 2XL
PRODUCT CODE: HER-SKORT

- Outer skirt 150gsm, inner 200gsm
- Elasticated waistband
- Technical birdeye mesh knit fabric
- Quick dry moisture management technology
- Antimicrobial fibres to prevent odours developing

MATERIAL:
 Outer - 100% Polyester
 Inner - 88% Polyester, 12% Spandex

- **BLACK** (HER-SKORT-BLK)
- **NAVY** (HER-SKORT-NVY)



Leisure Short

YOUTH SIZES: MB, LB
ADULT SIZES: XS, S, M, L, XL, 2XL, 3XL
PRODUCT CODE: LEIS-SHORT

- 120 gsm
- Mesh lining inner
- 4 Way stretch
- 3 Zipped pockets
- Elasticated drawstring waist
- Unisex fit

MATERIAL: 92% Polyester, 8% Elastane



BLACK
(LEIS-SHORT-BLK)



NAVY
(LEIS-SHORT-NVY)

Pro Rugby Short

YOUTH SIZES: XSB, SB, MB, LB, XLB
ADULT SIZES: S, M, L, XL, 2XL, 3XL, 4XL
PRODUCT CODE: PRO-RUGBYSHT

- 250 gsm
- Elastane side panels and gusset
- Gripper elastic to the inner waistband
- Internal gum shield pocket

MATERIAL: 92% Polyester, 8% Elastane ripstop fabric



BLACK
(PRO-RUGBYSHT-BLK)



WHITE
(PRO-RUGBYSHT-WHT)



NAVY
(PRO-RUGBYSHT-NVY)



Training Short

YOUTH SIZES: XSB, SB, MB, LB, XLB
ADULT SIZES: S, M, L, XL, 2XL, 3XL
PRODUCT CODE: CT-SHORT

- 110 gsm
- Mesh lining inner
- Elasticated waistband
- Integrated draw cord adjuster
- Two side pockets with concealed zips on all adult shorts

MATERIAL: 100% Polyester ripstop



BLACK
(CT-SHORT-BLK)



NAVY
(CT-SHORT-NVY)



Rugby Short

YOUTH SIZES: XSB, SB, MB, LB, XLB
ADULT SIZES: S, M, L, XL, 2XL, 3XL
PRODUCT CODE: CT-RUGBYNEW

- 250 gsm
- Elastane side panels and gusset
- Gripper elastic to inner waistband
- Internal gum shield pocket

MATERIAL: 100% Polyester Twill



RED
(CT-RUGBYNEW-RED)



BLACK
(CT-RUGBYNEW-BLK)



NAVY
(CT-RUGBYNEW-NVY)



ROYAL
(CT-RUGBYNEW-RYL)



WHITE
(CT-RUGBYNEW-WHT)



Skinny Pant

YOUTH SIZES: XSB, SB, MB, LB, XLB
ADULT SIZES: S, M, L, XL, 2XL
PRODUCT CODE: CT-SKINYPANT

- 240 gsm
- Tech bonded fabric with water repellent outer
- Quick dry antibacterial coating
- Brushed inner fleece
- 2 zipped side pockets & leg zip

MATERIAL: 100% Polyester

- **BLACK** (CT-SKINYPANT-BLK)
- **NAVY** (CT-SKINYPANT-NVY)



Leisure Pant

ADULT SIZES: XS, S, M, L, XL, 2XL, 3XL
PRODUCT CODE: LEIS-PANT

- 120 gsm
- 4 way stretch
- Three zipped pockets
- Integrated draw cord
- Side ankle zipped

MATERIAL: 92% Polyester, 8% Elastane



Track Pant

YOUTH SIZES: XSB, SB, MB, LB, XLB
ADULT SIZES: S, M, L, XL, 2XL, 3XL
PRODUCT CODE: CT-PANT

- 110 gsm
- PU (Polyurethane) clear coating
- Mesh inner lining
- Shower resistant and wind resistant
- Two zipped side pockets
- ¾ length side leg zips

MATERIAL: 100% Polyester Ripstop



Tech Top

YOUTH SIZES: MB, LB, XLB
ADULT SIZES: S, M, L, XL, 2XL
PRODUCT CODE: CT-TECHTOP

- 240 gsm
- Tech bonded fabric with water repellent outer
- Quick dry antibacterial coating
- Brushed inner fleece
- ¼ zip neck, dropped tail and bound cuffs

MATERIAL: 100% Polyester



Sub Coat

YOUTH SIZES: SMALL BOYS, BOYS, YOUTH

ADULT SIZES: S/M, L/XL, 2XL/3XL

PRODUCT CODE: CT-SUBCOAT

- 110 gsm
- Full length
- Wind resistant with quilted lining
- 2 side zipped pockets
- Ideal for embroidery

MATERIAL: 100% Polyester Ripstop



BLACK/SILVER
(CT-SUBCOAT-BLK)



NAVY/SILVER
(CT-SUBCOAT-NVY)



Stadium Jacket

ADULT SIZES: XS, S, M, L, XL, 2XL, 3XL

PRODUCT CODE: CT-STADJKT

- 110 gsm
- ¾ length
- Water resistant with quilted lining
- 2 side zipped pockets
- Ideal for embroidery

MATERIAL: 100% Polyester Ripstop



BLACK/SILVER
(CT-STADJKT-BLKS LV)



NAVY/SILVER
(CT-STADJKT-NVYSLV)

Matchday Jacket

YOUTH SIZES: MB, LB, XLB

ADULT SIZES: XS, S, M, L, XL, 2XL, 3XL, 4XL

PRODUCT CODE: CT-MATCHJKT

- 110 gsm
- Water repellent finish
- Padded jacket with decoration access
- Behrens Active tear out labels

MATERIAL: 100% Polyester

- **BLACK** (CT-MATCHJKT-BLK)
- **NAVY** (CT-MATCHJKT-NVY)





Thermal Robe

YOUTH SIZES: YOUTH
ADULT SIZES: S/M, L/XL
PRODUCT CODE: THERMAL-ROBE

- YKK QuickFree zip fastening at front
- 2 x Zip side pockets
- 1 x Inner zip pocket with headphone access
- 1 x Inner large patch pocket
- Built in hood

MATERIAL: 100% Polyester water-resistant outer
 100% Polyester sherpa fleece inner



BLACK
 (THERMAL-ROBE-BLK)



CAMO
 (THERMAL-ROBE-CAM)



NAVY
 (THERMAL-ROBE-NVY)





ECO TECH CRICKET RANGE

Eco Tech Short Sleeve Cricket Shirt

YOUTH SIZES: XSY, SY, MY, LY, XLY
ADULT SIZES: S, M, L, XL, 2XL, 3XL
PRODUCT CODE: ECO-TECH-SSCRICK

- Lightweight moisture wicking fabric
- Panelling at side seams
- Raglan short sleeves
- Concealed placket with 3 x popper fastening

MATERIAL: 100% Recycled Polyester

IVORY (ECO-TECH-SSCRICK)

Eco Tech Long Sleeve Cricket Shirt

ADULT SIZES: S, M, L, XL, 2XL, 3XL
PRODUCT CODE: ECO-TECH-LSCRICK

- Lightweight moisture wicking fabric
- Panelling at side seams
- Raglan long sleeves
- Concealed placket with 3 x popper fastening

MATERIAL: 100% Recycled Polyester

IVORY (ECO-TECH-LSCRICK)



Eco Tech Cricket Trousers

YOUTH SIZES: XSY, SY, MY, LY, XLY
ADULT SIZES: S, M, L, XL, 2XL, 3XL
PRODUCT CODE: ECO-TECH-CRICKTRS

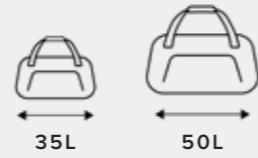
- 250 gsm
- Quick drying moisture management technology
- 2 side pockets
- Unfinished leg (webbing provided to tailor)

MATERIAL: 100% Recycled Polyester

IVORY (ECO-TECH-CRICKTRS)



AVAILABLE IN 2 SIZES



35L

50L

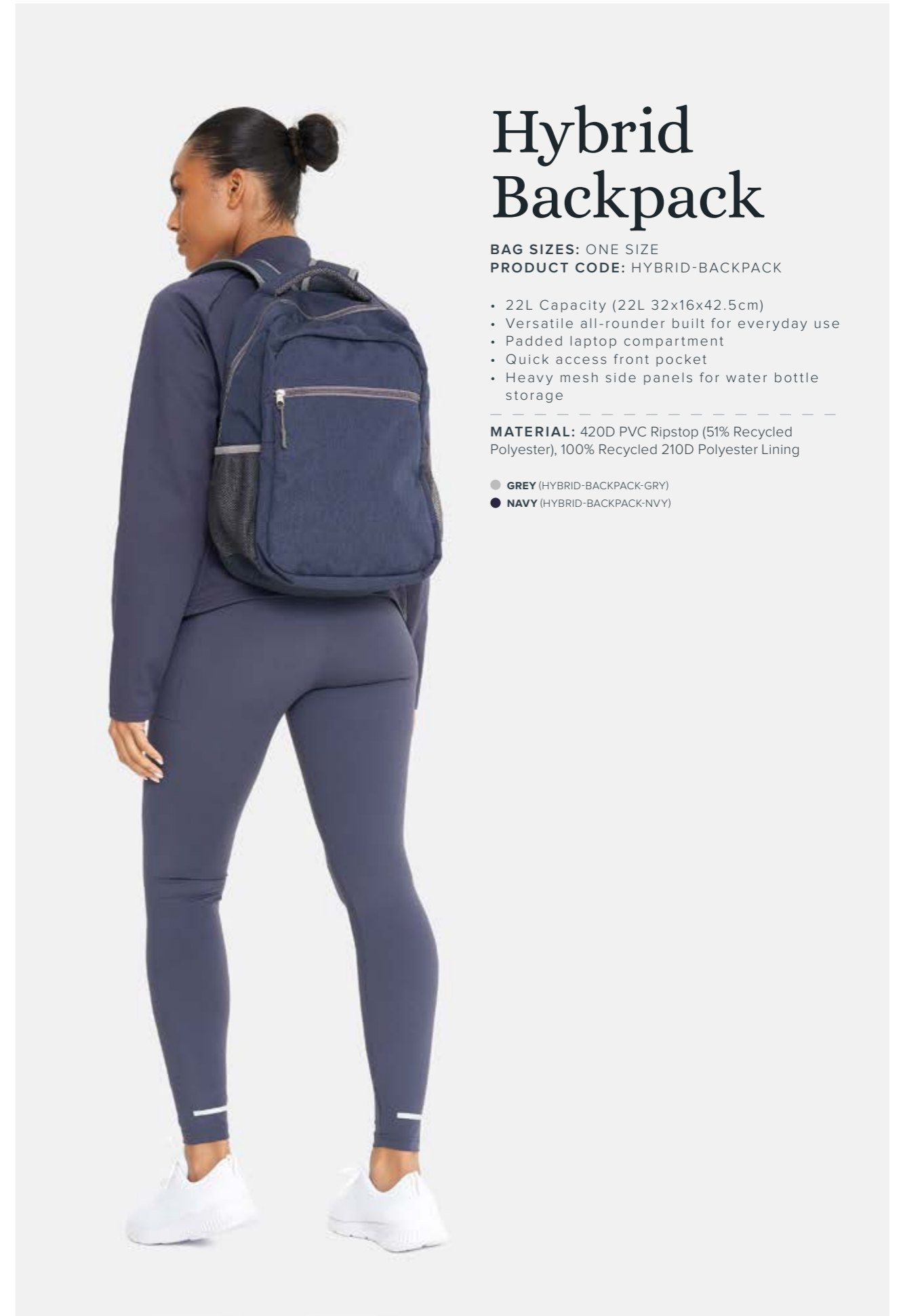
Hybrid Duffle Bag

BAG SIZES: REG, L
PRODUCT CODE: HYBRID-DUFFLE

- Versatile holdall with ergonomic shoulder straps to wear as a backpack when you are on the move
- Gusseted laundry/shoe pocket with zip access
- Two large side compartments for additional storage
- Regular 35L (54x28x23cm) vented compartment
- Large 50L (60x32x26cm) vented compartment

MATERIAL: 420D PVC Ripstop (51% Recycled Polyester), 100% Recycled 210D Polyester Lining

- GREY (HYBRID-DUFFLE-GRY)
- NAVY (HYBRID-DUFFLE-NVY)



Hybrid Backpack

BAG SIZES: ONE SIZE
PRODUCT CODE: HYBRID-BACKPACK

- 22L Capacity (22L 32x16x42.5cm)
- Versatile all-rounder built for everyday use
- Padded laptop compartment
- Quick access front pocket
- Heavy mesh side panels for water bottle storage

MATERIAL: 420D PVC Ripstop (51% Recycled Polyester), 100% Recycled 210D Polyester Lining

- GREY (HYBRID-BACKPACK-GRY)
- NAVY (HYBRID-BACKPACK-NVY)



Player Backpack

BAG SIZES: ONE SIZE
PRODUCT CODE: PLAYER-BACKPACK

- 600D premier weather proof outer fabric
- Padded adjustable straps and top grab handle
- Large 20L (33cm x 20cm x 46cm) zipped main compartment
- Separate zipped boot base
- 2 mesh water bottle side pouches
- Zipped front valuables pocket
- Built for embroidery access

MATERIAL: 100% Polyester



BLACK/SILVER
(PLAYER-BACKPACK-BLK)



NAVY/SILVER
(PLAYER-BACKPACK-NVY)

Rucksack

BAG SIZES: ONE SIZE
PRODUCT CODE: RUCKSACK

- 600D premier weather proof outer fabric
- Padded lower back and straps
- Large 25L (48cm x 38cm x 18cm) zipped main compartment
- Circular zipped front pocket
- 2 zipped side pockets
- Small zipped valuables pocket to the front
- Adjustable strap with mobile phone pocket

MATERIAL: 100% Polyester



BLACK/SILVER
(RUCKSACK-BLK-SLVR)



NAVY/SILVER
(RUCKSACK-NVY-SLVR)



Player Holdall

BAG SIZES: M, L
PRODUCT CODE: HOLDALL

- 600D Premier weather proof outer fabric
- Padded adjustable shoulder strap and 2 top grab handles
- Hard-wearing rubber base grips
- Built for embroidery access
- Medium (54cm x 26cm) - 50L main & separate zipped boot base
- Large (62cm x 31cm) - 80L main & separate zipped boot base

MATERIAL: 100% Polyester

● **BLACK/SILVER** (HOLDALL-BLK)

● **NAVY/SILVER** (HOLDALL-NVY)



Wheelie Team Kitbag

BAG SIZES: ONE SIZE
PRODUCT CODE: CT-WHEELIE

- 600D Premier weather proof outer fabric
- Heavy Duty Base panel with extendable luggage handle
- 140L (76cm x 46cm) main zipped compartment with zipped side pocket
- Shatter proof nylon wheels with rubber base grips
- Heavyweight grab handles to the top with shoulder strap
- Built for embroidery access

MATERIAL: 100% Polyester

● **BLACK** (CT-WHEELIE-BLK)



XL Team Kitbag

BAG SIZES: XL
PRODUCT CODE: KITBAG

- 600D premier weatherproof outer
- Padded adjustable shoulder strap and grab handle
- Large 150L (82cm x 40cm) zipped main compartment
- Hard-wearing rubber base grips
- Built for embroidery access

MATERIAL: 100% Polyester

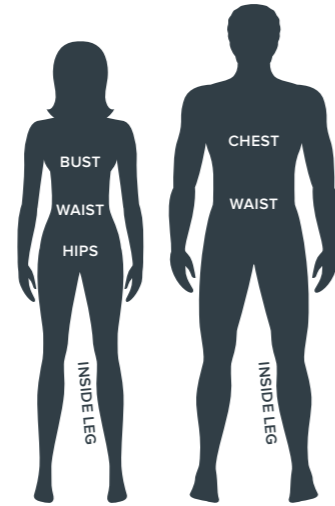
● **BLACK/SILVER** (KITBAG-BLACK-SILVER)



Size Guides

A garment that fits correctly ensures freedom of movement and comfort for the wearer.

Please follow our easy guide for a correct fitting garment.



Chest - Measure over the fullest part, under the arms and straight across the back.

Waist - Measure around the natural waistline.

Hips - Measure around the fullest part of the lower body.

Healthcare Size Guide

Women's Size Chart - Dresses & Tunics

Dress Size	4	6	8	10	12	14	16	18	20	22	24	26	28	30
Bust ins	30	31	32	34	36	38	40	42	44	46	48	50	52	54
Bust cm	76	79	81.5	86.5	91.5	96.5	101.5	106.5	111.5	116.5	121.5	126.5	131.5	136.5
Hips ins	33	34	35	37	39	41	43	45	47	49	51	53	55	57
Hips cm	83.5	86.5	89	94	99	104	109	114	119	124	129	134	139	144

Women's Size Chart - Trousers

Trouser Size	4	6	8	10	12	14	16	18	20	22	24	26	28	30
Waist ins	24	26	27	29	30	32	33	34	35	37	39	40	42	44
Waist cm	61	65	69	73	77	81	84	85	90	94	98	102	106	111

Inside leg length - Short: 27" / Regular 29" / Tall: 31" / Unhemmed: 35"

Men's Size Chart - Tunics & Trousers

Chest Size	32	34	36	38	40	42	44	46	48	50	52	54		
Alpha Size	XS	S	M	L	XL	2XL	3XL							
Chest ins	32	34	36	38	40	42	44	46	48	50	52	54		
Chest cm	81	86	92	97	102	107	112	117	122	127	132	137		
Trouser Size	28	30	32	34	36	38	40	42	44	46	48	50	52	54
Waist ins	28	30	32	34	36	38	40	42	44	46	48	50	52	54
Waist cm	71	76	81	86	92	97	102	107	112	117	122	127	132	137

Inside leg length - Short: 29" / Regular 31" / Tall: 33" / Unhemmed: 35"

Unisex Smart Scrub Suit - Tunic & Trouser

Tunic Size	XXS	XS	S	M	L	XL	2XL	3XL
Chest ins	26	30	34	38	41	46	50	54
Chest cm	66	76	86	97	107	117	127	137
Trouser Size	XXS	XS	S	M	L	XL	2XL	3XL
Waist ins	26-28	28-30	30-32	34-36	36-38	38-40	42-44	46-48
Waist cm	66-71	71-76	76-81	86-92	92-97	97-102	107-112	117-122

Inside leg length - Short: 29" / Regular 31" / Tall: 33"

Unisex Reversible Scrub Suit - Tunic & Trouser

Tunic Size	XS	S	M	L	XL	2XL	3XL
Chest ins	30-32	34-36	38-40	42-44	46-48	50-52	54-56
Chest cm	76-82	86-91	96-102	107-112	117-122	127-132	137-142
Trouser Size	XS	S	M	L	XL	2XL	3XL
Waist ins	28-30	32-34	36-38	40-42	44-46	48-50	52-54
Waist cm	71-76	81-86	91-96	102-107	112-117	122-127	132-137

Simki Size Guide

Women's Size Chart - Scrub Tops

Simki Size	Numeric Size	To fit chest (cm)	Nova body length (Shoulder to hem)**	Ari body length (Shoulder to hem)**
2XS	6	80 - 84	64	71
XS	8	85 - 88	65	72
S	10	88 - 92	66	73
M	12	92 - 96	67	74
L	14	96 - 100	68.5	75.5
XL	16	100 - 104	70	77
2XL	18	104 - 109	71.5	78.5
3XL	20	109 - 120	73	80

Women's Size Chart - Scrub Trousers

Simki Size	Numeric Size	Inside leg length (cm)**	Waistband (cm)**
2XS	6	73	70
XS	8	73.5	75
S	10	74	80
M	12	74.5	86
L	14	75	92
XL	16	75.5	98
2XL	18	76	104
3XL	20	76.5	110

Men's Size Chart - Scrub Tops

Simki Size	To fit chest (cm)	Shoulder to hem (cm)**
XS	84-90	69
S	90-96	71
M	96-102	72.5
L	102-108	74
XL	108-113	75.5
2XL	113-119	77
3XL	119-125	78.5

Men's Size Chart - Scrub Trousers

Simki Size	Jogger inside leg length (cm)**	Straight leg length (cm)**	Waistband (cm)**
XS	78.5	77	72
S	79	77.5	77
M	79.5	78	82
L	80	78.5	88
XL	80.5	79	94
2XL	81	79.5	100
3XL	81.5	80	106

** Please note, these are garment measurements to be used as a guide

Beautywear Size Guide

Women's Size Chart - Dresses & Tunics

Size	4	6	8	10	12	14	16	18	20	22	24	26	28	30	32
Bust (cm)	86	91	96	101	106	111	116	122	128	134	140	146	152	158	164
Hem circumference (cm) (Hips)	90	95	100	105	110	115	120	126	132	138	144	150	156	162	168

Women's Size Chart - Trousers

Size	4	6	8	10	12	14	16	18	20	22	24	26	28	30	32
Waist (cm)	66.5	71.5	76.5	81.5	86.5	91.5	96.5	101.5	106.5	111.5	116.5	121.5	126.5	131.5	136.5
Hips (cm)	87	92	97	102	107	112	117	122	127	132	137	142	147	152	157

Men's Size Chart - Tunics

Size	XS	S	M	L	XL
Chest (cm)	94.5	104.5	114.5	124.5	134.5
Hem circumference (cm)	92.5	102.5	112.5	122.5	132.5

Men's Size Chart - Trousers

Size	XS	S	M	L	XL
Waist (ins)	24 - 26	28 - 30	32 - 34	36 - 38	40 - 42

Chef's Wear Size Guide

Unisex Size Chart - Tops

Size	2XS	XS	S	M	L	XL	2XL	3XL	4XL
Chest (ins)	26 - 28	30 - 32	34 - 36	38 - 40	42 - 44	46 - 48	50 - 52	54 - 56	58 - 60
Chest (cm)	66 - 71	76 - 82	86 - 91	96 - 102	107 - 112	117 - 122	127 - 132	137 - 142	147 - 152

Unisex Size Chart - Trousers

Size	2XS	XS	S	M	L	XL	2XL	3XL	4XL
Waist (ins)	24 - 26	28 - 30	32 - 34	36 - 38	40 - 42	44 - 46	48 - 50	52 - 54	56 - 58
Waist (cm)	61 - 66	71 - 76	81 - 86	91 - 96	102 - 107	112 - 117	122 - 127	132 - 137	142 - 147

Eco Tech Size Guide

Men's Size Chart

Size	XS	SY	MY	LY	XLY	S	M	L	XL	2XL	3XL
Chest (ins)	26	28	30	32	34	34-36	38-40	42-44	46-48	50-52	54-56
Waist (ins)	22	24	26	28	30	30-32	32-34	34-36	36-38	40-42	44-46

Shaded sizes are non VATable

Women's Size Chart

Size	6	8	10	12	14	16	18
Chest (ins)	30	32	34	36	38	40	42
Waist (ins)	24	26	28	30	32	34	36

Sportswear Size Chart

Adult Size Chart

Size	S	M	L	XL	2XL	3XL
Chest (ins)	34-36	38-40	42-44	46-48	50-52	54-56
Waist (ins)	30-32	32-34	34-36	36-38	40-42	44-46

Youth Size Chart

Age Guide	5/6yrs	7/8yrs	8/9yrs	9/10yrs	11/12yrs
(Non VATable)	XSB	SB	MB	LB	XLB
Chest (ins)	26	28	30	32	34
Waist (ins)	22	24	26	28	30

Thermal Robe

Size	YOUTH	S/M	L/XL
Chest (cm)	75	84	87
Centre Back length (cm)	103	118.5	123

The above size chart measurements are for the garment, not the wearer's body. This garment has an oversized fit; we suggest comparing its measurements to a similar garment for an accurate fit. Please note that there may be slight variations in measurements due to commercial tolerance.

Greenbergs **est 1903**

Greenbergs,
167A Allerton Road,
Allerton,
Liverpool,
L18 6HG

Telephone: 0151 724 2184
Email: sales@greenbergs.co.uk
www.greenbergs.co.uk