



The Guardian Range...

The Britcab 'Guardian' range has been designed with your security and comfort in mind. These low maintenance security buildings are value engineered to provide long life durability, defeat unauthorised entry and combat vandalism in the most remote areas. The Guardian units are a ready-made solution, ideal for the construction market.



GUARDIAN
 by Britcab www.ukcabins.com



External Walls

The external walls are multi-profiled 1.6mm thick pressed steel panels, welded to one another and the structural frame. The steel is fully compliant with BS1449 HR4. All roof seams, edges and lower wall perimeter are guarded with a heavy rust prohibitive paint. The exterior of the unit receives one high build coat of paint in a variety of optional colours.



Floor Construction

Tongue and grooved 18mm treated chipboard flooring supported by 100x50x3mm joists at 436mm centres and, in turn, the unit bottom rail. The steel is fully compliant BS1449 HR4. The floor covering is a heavy-duty flexible sheet vinyl, with continuously welded joints and is bonded to the floorboards. Floors are designed to provide for a uniform floor loading of 2.5kn/m2.



External Doors and Shutters

Galvanised steel kirncroft security door with 10 point horizontal and vertical bolts and euro profile multipoint locking system – with stainless steel lever handle. Maintenance free aluminium framed polyester powder coated windows. Kirncroft galvanised steel/security side opening shutters.



Interior Finish

Internal finishes are installed on 44mm x 34mm PSE framing on which is embossed vinyl wall covering, laminated to 12.5mm plasterboard and providing a class 'O' surface spread of flame with extruded plastic joint strips. Wall cavities are insulated with 25mm fibrous insulation which allows for air flow. Natural trickle ventilation is achieved by the incorporation of high level permavents.



Dual Pitch Roof

Roof panels of 1.6mm thick pressed steel, fully welded and supported by steel roof bows. An additional central support is also provided to give a positive camber to the roof to prevent ponding of water. (Steel is full compliant with BS1449 HR4). Internal finishes are installed on 'G' section ceiling joists, on which is embossed vinyl covering, laminated to 12.5mm plasterboard and providing a class 'O' surface spread of flame with extruded plastic joint strips. Roof cavities are insulated with 90mm non-combustible fibrous insulation and provides a 'U' Value of 0.49.



Standard Electrics

All cabins are fitted with consumer unit, inlet box, 1500mm fluorescent lighting and 2KW convector heaters which can be controlled by a thermostat with timer. Our new build range also include 13amp twin sockets with 2 outlet USB chargers built in – handy for charging mobile phones. All Electrics are hardwired within the fabric of the building.

Guardian Range: Full Specifications

Floor

Tongue and grooved 15mm exterior grade plywood supported by 98x50x3mm joists at 405mm centres and in turn, the unit bottom rail. Steel complies with BS1449 HR4. The floor covering is a heavy-duty flexible sheet vinyl, with continuously welded joints and is bonded to the floorboards. Floors are designed to provide for a uniform floor loading of 2.5kn/m².

External Walls

The external walls are multi-profiled 1.6mm thick pressed steel panels, welded to one another and the structural frame. Steel as noted above complies with BS1449 HR4. Internal finishes are installed on a 50mm stud frame on which is embossed vinyl wall covering laminated to 12.5mm plasterboard and providing a class 'O' surface spread of flame with extruded plastic joint strips.

Alternative linings are available on request. Wall cavities are insulated with 90mm non-combustible fibrous insulation and provides a 'U' value of 0.49w/m²c. Natural trickle ventilation is achieved by the incorporation of high level permavents.

External Painting

All roof seams, edges and lower wall perimeter and are guarded with a heavy rust prohibitive paint. The interior of the unit receives one mist coat of paint. The exterior receives one high build coat of paint in a variety of optional colours.

Roof

Roof panels of 1.6mm thick pressed steel, fully welded and supported by steel roof bows. An additional central support is also provided to give a positive camber to the roof to prevent ponding of water. Steel as noted above complies with BS1449 HR4.

Internal finishes are installed on 'G' section ceiling joists, on which is embossed vinyl covering laminated to 12.5mm plasterboard and providing a class 'O' surface spread of flame with extruded plastic joint strips. Alternative linings are available on request. Roof cavities are insulated with 90mm non-combustible fibrous insulation and provides a 'U' value of 0.49w/m²c

Windows

Maintenance free aluminium framed polyester powder coated windows with top opening casements and satin anodised aluminium casement stays glazed in 4mm float glass. Kirncroft galvanised steel/security, side opening shutters.

Comes complete with the following features:

- Heavy duty flush mounted alloy finger bolts with galvanised steel locking.
- Stainless steel 'anti-knockout' hinges.
- Hand grips.
- Anti-jemmy studs.
- Drainage caps.

External Doors

Galvanised steel Kirncroft security door with 10 point horizontal and vertical bolts and euro profile multipoint locking system, and stainless steel lever handle.

Jacklegs – Optional Extra

Manufactured from rectangular hollow-section steel with bolted base and hook on head plates telescopic legs and unique double pin dowel adjustable at 100mm centres that enables triple stacking of units.

Transport and Handling

Designed to make relocation and transportation as simple as possible and any reputable haulage contractor can readily undertake the process are avoided.

Stacking

When stacking Guardian buildings, it is important that the building foundations are capable of withstanding the full loads of all buildings, including all imposed snow loading and wind loads. This will generally involve the placement of concrete foundations, and competent professional advice should be sought to ensure that adequate provisions are made.

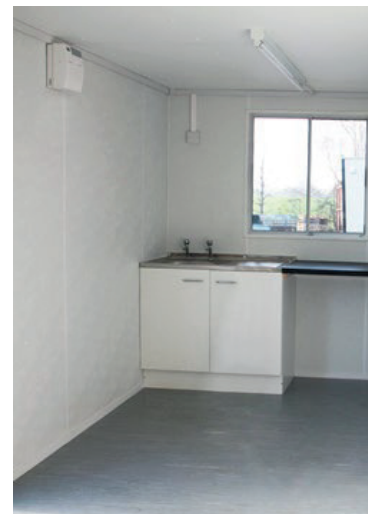
Optional Variations

Guardian buildings can be linked together on site to form various configurations or layouts to suit your particular needs. Linking of Guardian buildings is accomplished using a purpose made linkway or butt linking. This provides a simple and reliable method of linking buildings together, and requires no special installation skills.

The following linking arrangements can be achieved with the standard building:

- Side to Side.
- End to End.
- Vertically
- Combinations of the above.

Interlinking is also possible with different sized units throughout the range.



These anti-vandal cabins have the following key features...

- Secure multi-profiled steel exterior with 1.6mm steel panels.
- Steel compliant with BS1449 HR4.
- All roof seams, edges and lower wall perimeter are guarded with a heavy rust prohibitive paint – Variety of external colour options available.
- Roof cavities are fully insulated with 90mm non-combustible fibrous installation and provides a 'U' Value of 0.49.
- Kirnicroft galvanised steel/security, side opening window shutters. Windows complete with – Galvanised steel locking, hand grips, drainage caps and more!
- Heavy duty flexible sheet vinyl, with continuously welded joints bonded to the floorboards.
- Electrical installation is designed and installed in accordance with the requirements of the IEE Regulations 17th Edition 2008.
- Units can be easily adapted and modified to create various configurations.
- Can be linked and stacked on site.



GUARDIAN
by Britcab www.ukcabins.com

 **Not sure what you need? Let us help you, contact us on 01759 301725 to discuss your requirements.**