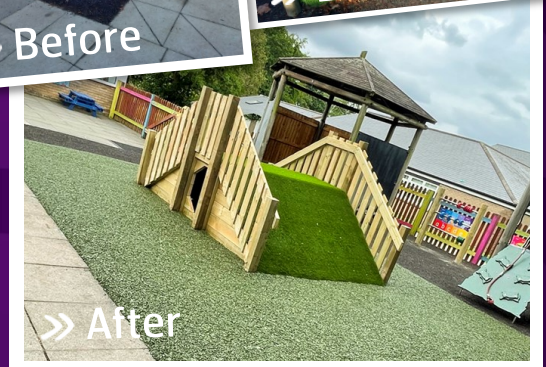


# CASE STUDY

## RIVER MEADOW PRESCHOOL – MK16 9DS



**SOVEREIGN**  
Bringing Imagination into Play



Justin was invited to revisit the River Meadow Pre School in February of this year to meet Sue and her colleague after Sovereign had previously carried out some surfacing works for them a couple of years ago.

Their new project was to replace an old piece of equipment that was in disrepair that was originally a low level boat. The area we had to work with was not very big as they have other play equipment, so we had to be mindful of the fall zones required for those and to ensure that everything suggested was fully compliant.

We ended up providing 2 options, one for a replacement boat and another for a more existing mini tunnel mound with new surfacing all around which they eventually chose. We are very pleased they chose that option and that the children are now enjoying their new equipment.

## » FEEDBACK

**Why did you choose Sovereign for the Project?**

"We wanted to enhance our outdoor area with some new equipment which would be versatile. Choosing the mini bridge and tunnel was a great option as the children could use it as anything."

**What made Sovereign's design better than any others you received?**

"We chose Sovereign as we had used them before and were pleased with the whole process."

**How did you find the design process?**

"The installation was smooth going and the guys who came to install were very professional, and their workmanship was exquisite. They also tidied up after themselves."

**How did you find the installation process?**

"The children thoroughly enjoyed using the mini bridge and tunnel and were all soon running up and over the equipment, we also had an abacus installed and this encouraged mathematical language outside. The equipment support gross motor skills, mathematics, understanding of the world as well as personal, emotional and social development."

**What was your overall experience of having Sovereign fulfil your project?**

"It passed all expectations as it all went so smoothly and the majority of the work was done out of term time which helped. The third day was in term time and the men were very accommodating as they have many little supervisors watching and they also had to listen to the pots and pans music the children were playing."



"The installation went really well, we are really pleased with the equipment installed. Special thank you to Steve, for doing the installation on his own on the Thursday and Friday he worked very hard. Thank you to the guys who came on Tuesday to finish the works, they had to put up with a lot of interested children watching them work and making a lot of music on the pots and pans. Thank you to the lovely guy who came to pick up the waste and was kind enough to check he had taken everything. The mini tunnel was extremely popular on Wednesday morning after the children had, had their photographs taken against the new equipment which made a lovely back drop. I would highly recommend using this company as Sovereign looked after us from start to finish. They were professional throughout the whole process, our new equipment looks amazing and the children are really enjoying using the mini bridge and tunnel, abacus and height chart in our garden area."

Sue Casebrook

Financial Administrator



Justin Mottaz - 07747 474323  
- justin@sovereignplay.com

