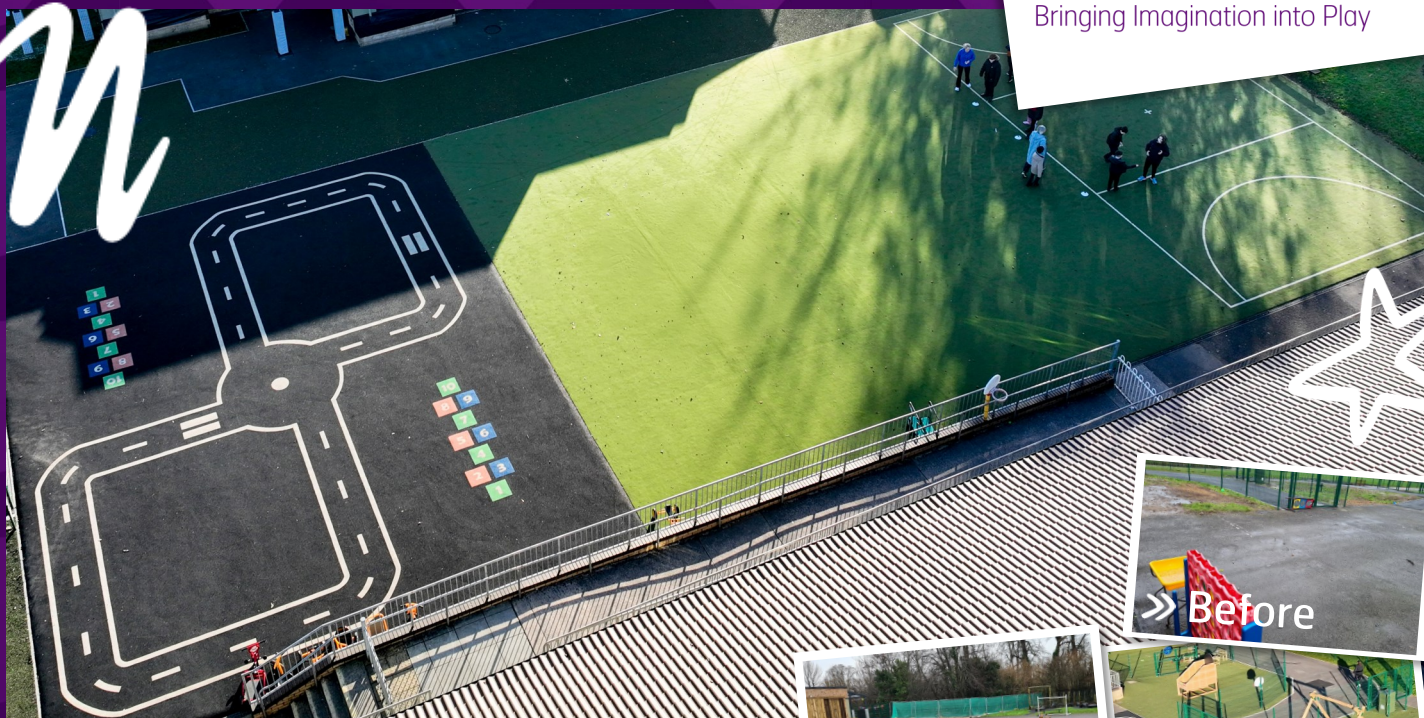


CASE STUDY

MEADOWBANK SCHOOL – CF14 2QQ



SOVEREIGN
Bringing Imagination into Play



Following the recent expansion of the school building, the school sought to redesign the back playground to reflect its evolving educational priorities, with a particular focus on accommodating the needs of pupils with complex learning requirements. This redevelopment was vital to meet the school's updated admission criteria, which prioritises providing specialised support. The project aimed to develop an inclusive, accessible, and engaging outdoor space that complements the new facilities and enriches the overall learning experience for all students. The school now boasts a variety of outdoor spaces, including a wetpour roadway, hopscotch area, needlepunch sports pitch, and a basket seat log swing, all designed to promote safer and more inclusive play opportunities.



>> Before



>> Before



>> After



>> After

>> FEEDBACK

What were the reasons for starting your project?

"Development of the back playground area of the school following a new extension to our current building and making our spaces fit for purpose following a change in admission criteria to support pupils with complex learning needs."

How did you discover Sovereign and why did you choose us?

"We had previously engaged in a quote with Sovereign for playground works a few years earlier."

What was your experience of our design and installation process?

"The design process seemed to proceed smoothly. We had a clear idea of what we wanted, and the end result reflected that."

How has our equipment impacted or benefitted your school/organisation?

"Amazing play spaces!"

What was your overall experience of having Sovereign fulfil your project?

"Good. Planning was straightforward. The end result - very pleasing and good follow up by the team to rectify any issues."

>> "Pupils were excited to explore the bespoke play areas created by Sovereign Play. It has made a huge difference to the way in which pupils interact with each other and explore the outdoor learning environment."

Claire Hardy
Headteacher



Julie Pearce - 07917 230134
- Julie.pearce@sovereignplay.com

