



SELECTED PROJECTS //



INDEX

Index & Introduction

| | |
|---------------------|---|
| Index..... | 1 |
| About Us..... | 2 |
| Quality Ranges..... | 3 |
| Bespoke Design..... | 4 |
| ReVive..... | 5 |

Retail & Commerce

| | |
|--------------------------------|----|
| The Pier..... | 28 |
| Thorntons..... | 30 |
| Westfield Shopping Centre..... | 32 |
| Saltash Jaguar..... | 34 |
| Herr Kutz..... | 36 |

Feature Lighting & Landmarks

| | |
|--------------------------|----|
| Glass Chandelier..... | 60 |
| Norfolk House..... | 62 |
| Adam & Eve..... | 64 |
| Worth School..... | 66 |
| Reception Light..... | 68 |
| Thanksgiving Beacon..... | 70 |
| Sails of the South..... | 72 |
| Poppies..... | 74 |
| Ageas Bowl..... | 76 |

Museums, Galleries & Heritage

| | |
|----------------------------|----|
| HMS Victory..... | 8 |
| National Motor Museum..... | 10 |
| Kew Orchid House..... | 12 |
| Tower Bridge..... | 14 |
| Syon Park..... | 16 |
| HMS Unicorn..... | 18 |
| Manchester Library..... | 20 |
| Tudor House..... | 22 |
| Discovery Centre..... | 24 |

Exterior Facade

| | |
|-----------------------------|----|
| Regent Street..... | 40 |
| Sofitel Hotel..... | 44 |
| Baker Street..... | 46 |
| Piece Hall..... | 48 |
| Leake Street Arches..... | 50 |
| Battersea Powerstation..... | 52 |
| Spanish City..... | 54 |
| Lincoln's Inn..... | 56 |

Faith Buildings

| | |
|---------------------------|----|
| Chichester Cathedral..... | 80 |
| St John's Church..... | 82 |
| All Saints Church..... | 84 |
| St Joseph's Church..... | 86 |
| Salisbury Cathedral..... | 88 |
| Lincoln Cathedral..... | 90 |
| All Hallows..... | 92 |

ABOUT US \

Commercial Lighting Systems Ltd was established in Hampshire in 1991. The company is dedicated to offering the best quality, energy-efficient lighting to the UK market. Our business is client-led, and made up of three divisions: reputable product ranges, bespoke design, and our flagship ReVive service for restoring and updating older lighting systems.

With almost 30 employees, many working here for over 20 years, our size lets us handle projects of any size. This allows us to maintain a personal approach to business, particularly advantageous for projects with unique specifications.

OUR VALUES \

How we do business is just as important as the end product. Our approach is built around quality, honesty, and sustainability.

We continually invest in technologies that help us minimise our environmental impact. From solar panels and full EV fleet to our minimal waste policy, we ensure every stage of our operations is considered for its impact on the environment.

QUALITY RANGES \

Commercial Lighting offers some of the best product ranges on the market.

From our own in-house brand Sovereign to well recognised international names such as Meyer, Commercial Lighting is able to provide lighting solutions for any project.



Floodlights



Pole Tops



Bollards



Free Standing



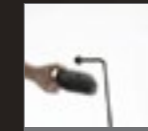
Ceiling Recessed



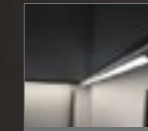
Linear Systems



Ground Recessed



Portable



Stairway



Track lighting



Surface Mounted

BESPOKE DESIGN \

Product Modification

Commercial Lighting often creates custom adaptations of existing products for our clients.

Need a specific housing colour, light source or bespoke colour rendering index? We can help.

Custom Product Design

If you are after a unique feature pendant, a specific housing design, or a solution not currently offered on the market, get in touch.

Many of our Sovereign products started as custom designs made in collaboration with clients.

Lighting Solutions

Our facilities include a metal workshop, in-house powder coating plant, and a team of experienced electrical assemblers.

This enables us to develop completely bespoke lighting solutions for any project.



Our ReVive service puts sustainability at the heart.

Utilising 20+ years experience in sensitive restoration and refurbishment, Commercial Lighting gives old products new life, bringing them in line with the very latest standards, efficiency and performance.



**Museums,
Galleries,
& Heritage**



HMS VICTORY \



We enjoy working on projects that support our local and national heritage. Commercial Lighting is fortunate to have a strong relationship with the Portsmouth Historic Dockyard, which is our local maritime museum.

Our lights can be found throughout the museum site, starting with the majestic HMS Victory.

Location // Portsmouth
Lighting Designer // Sutton Vane Associates





NATIONAL MOTOR MUSEUM \

From the Weald and Downland Museum to the National Football Museum in Manchester, Commercial Lighting has become a trusted partner for some of the nation's best loved heritage centres.

The National Motor Museum in Beaulieu is a world famous heritage centre telling the motoring history of Britain to the present day. Conveniently local to Commercial Lighting, we are proud to have a longstanding relationship with the museum.

Location // Beaulieu
Lighting Designer // Commercial Lighting



KEW ORCHID HOUSE

Location // London
Lighting Designer // Commercial Lighting



TOWER BRIDGE \\

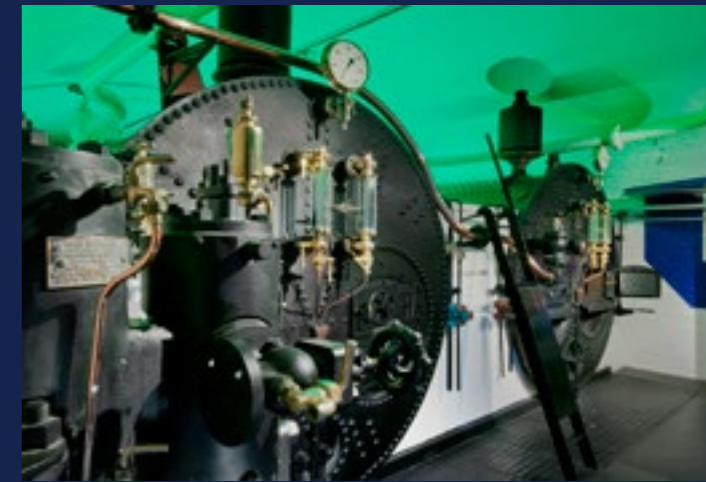
Commercial Lighting worked closely with Eleni Shiarlis Lighting Design on the scheme for Tower Bridge. We provided Exhibition and Event lighting for the Tower Bridge Engine Room, as well as the east and west walkways.

In the museum space, we used Sovereign track mounted projectors and spotlights for illumination. For events, we designed a bespoke Sovereign RGB system that allows for dramatic and changeable colored illumination.



Location // Central London

Lighting Designer // Eleni Shiarlis Lighting Design



SYON PARK \

It was a pleasure for us to be involved in illuminating The Great Conservatory at Syon Park, Middlesex working closely with our specialist distributor Nigel Weir of Contact Electrical Distributors Ltd.

Fifteen years after the original scheme, we returned to refurbish the luminaires through our ReVive service, as well as replacing the original halogen superlights with bluetooth controlled RGBW LED luminaires.

Location // Brentford, Middlesex
Lighting Designer // Commercial Lighting
Supplier // Contact Electrical Distributors Ltd





HMS UNICORN \

Our ReVive service was used to sensitively refurbish and convert HMS Unicorn's vintage candle lamps to LED, keeping the moody atmosphere of candlelight while providing safe and efficient illumination to the historic vessel's eating deck for public visiting.

Location // Dundee
Lighting Designer // Commercial Lighting





MANCHESTER LIBRARY \

Just a week after the launch of Meyer's innovative Arclux product, they were already specified by BDP as part of their new lighting scheme for Manchester Central Library.

Complimenting the Meyer superlights found elsewhere on the building, each Arclux fitting creates a 180° lighting effect in its own window reveal, creating a dramatic effect with the most minimal of imposition.

Location // Manchester
Lighting Designer // BDP





TUDOR HOUSE \

Southampton's most important historic building, Tudor House reveals over 800 years of history. This timber frame building was built in the late 15th century, and gives a unique and atmospheric insight into the lives and times of its residents and of Southampton itself.

Our work at Tudor House exemplifies what has become an important part of our work in recent years - replacing older technology lighting for better quality and much more sustainable LED products. Updating Tudor House's old Tungsten Halogen system for our more energy efficient Sovereign resulted in a staggering energy saving of almost 90%, and an improved overall light quality.

"I am grateful to Commercial Lighting for working hard to ensure they could offer us an affordable, workable alternative to the high energy halogen track spotlights. Not only are we saving on electricity bills, but our museum staffs are very pleased with the quality of the new lighting"

Jane Altonyan, Carbon Reduction Officer

Location // Southampton
Lighting Designer // Commercial Lighting



DUNDEE SCIENCE CENTRE \\\

For Dundee Science Centre, we provided an interactive lighting scheme for their current exhibition. The system is also flexible enough to adapt to future exhibitions.

Suspended globes in varying diameters, pulse white and red to mimic human blood flow, via a DMX system. Additionally, RGB Linear systems were installed to give additional constant background lighting along the walls and corridors, all offering a wide options of lighting colours for future exhibits.



Location // Dundee
Lighting Designer // Elders LLP



A photograph of a modern interior space, likely a retail or commercial building. The ceiling is white with several long, recessed linear light fixtures. Large windows with dark frames are visible on the right side, showing a clear blue sky. The overall aesthetic is clean and contemporary.

Retail & Commerce



JAGUAR SHOWROOMS \ \



Location // Saltash & Sidcup
 Lighting Designer // Commercial Lighting



Having been involved in the lighting of many car showrooms including Mercedes Benz, Land Rover, Vauxhall, Kia, Toyota, Nissan, VW and Porsche, one of our closest partnerships has been with the Jaguar brand.

Working with both Roger Young in Saltash and Beadles in Sidcup, we were responsible for both the supply and lighting design of these high end showrooms.

Location // Warsash, Hampshire
Lighting Designer // Commercial Lighting



HERR KUTZ //





THE PIER //

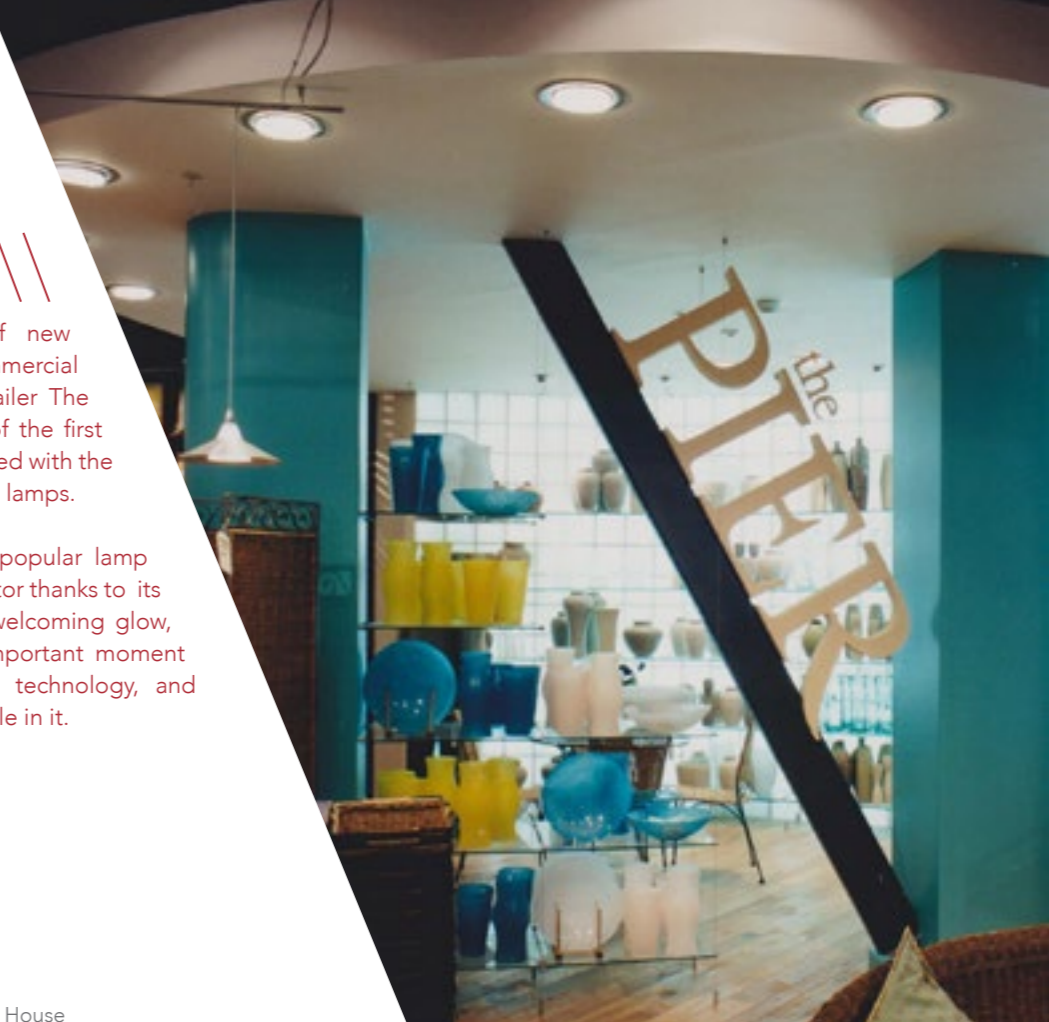
Always at forefront of new lighting technology, Commercial Lighting's work with retailer The Pier meant it was one of the first shops in the UK to be fitted with the iconic Philips White SON lamps.

Subsequently a hugely popular lamp throughout the retail sector thanks to its characterful warm and welcoming glow, the project marks an important moment in the history of lamp technology, and Commercial Lighting's role in it.



Location // UK-Wide

Lighting Designer // Lighting Design House



THORNTONS \

Commercial Lighting is incredibly proud to have provided some of the very first LED lighting to the retail sector. Following our work with numerous big name brands in individual stores, Thorntons represents the first implementation of our LED products nationwide.



Location // UK Wide
Lighting Designer // Commercial Lighting



WESTFIELD SHOPPING CENTRE //

Many of Commercial Lighting's projects require unique and individual lighting solutions, often resulting in completely bespoke products. Our work for the Valet Parking area in Westfield Shopping Centre is certainly a testament to this. These specially designed fittings were some of our largest yet, providing a dramatic lighting solution for clients at Westfield.



Location // London

Lighting Designer // INTO Lighting Design



A photograph of a grand, classical building's exterior facade at night. The building features a prominent portico with tall, fluted columns and a decorative entablature. The facade is illuminated from below, highlighting its architectural details. In the foreground, several national flags are flying on tall poles, including the flag of the United Kingdom (Union Jack) and the flag of the United States of America. The scene is set against a dark night sky.

Exterior Facade

REGENT STREET \\\

Over the past two decades, Commercial Lighting has supplied almost 3000 luminaires to Regent Street for their External Lighting masterplan, working closely with Lighting Designer Tony Rimmer of Studio 29. Written in a recent article published in the magazine "Lighting - Illumination with Architecture":

"Tony Rimmer applauds the efforts of Commercial Lighting Systems Ltd for being unbelievably proactive and offering total back up to the project and as a manufacture and a supplier they were totally faultless."

The project has also been featured in the recently published book "Super Lux - Smart Light Art, Design & Architecture for Cities", by Davina Jackson.



Location // London
Lighting Designer // Studio 29





Regent Street, London



SOFITEL HOTEL \\\

Working with Studio 29, we delivered a dramatic solution that saw the scheme commended for the Outdoor Project of the Year at the 2016 Lux Awards.

Location // London
Lighting Designer // Studio 29



BAKER STREET \

Following facade deep cleaning and refurbishment, Studio 29 were brought in to bring the architecture to life at night. Located on a prominent and busy corner of Baker Street, there is a clear hierarchy of vertical elements alongside corning features built in portland stone. Working with Commercial Lighting, Studio 29 chose Meyer floodlights to enhance the building's repetitive elements.

82 Baker Street was highly commended in the Outdoor Lighting Project of they Year category, Lux Awards 2015.

Location // London
Lighting Designer // Studio 29





PIECE HALL \

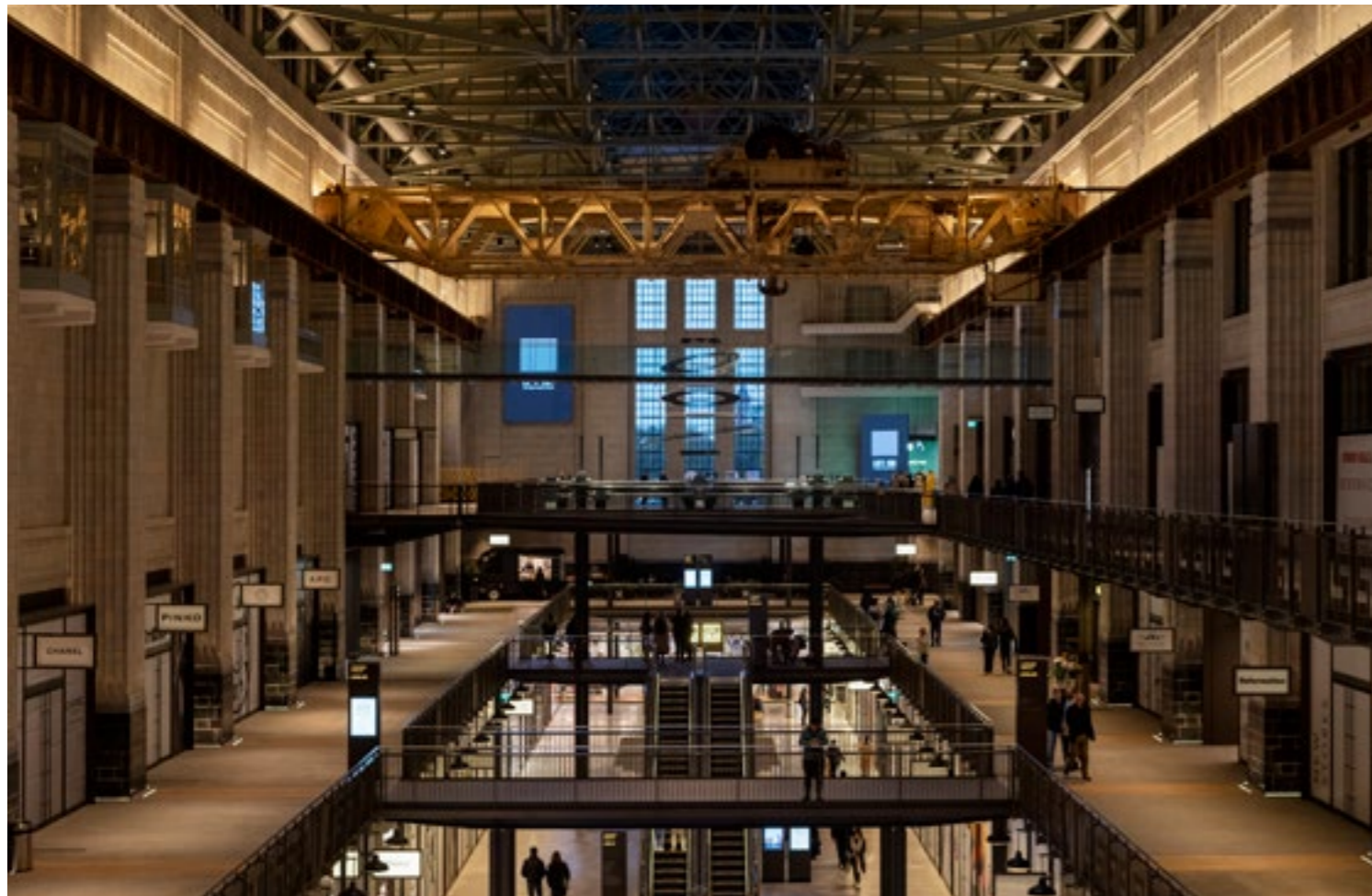


Location // Halifax
Lighting Designer // Buro Happold

LEAKE STREET ARCHES

Location // London
Lighting Designer // Nulty+





52 Exterior Facade



BATTERSEA POWERSTATION \\\



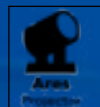
Location // London
Lighting Designer // Speirs Major

Exterior Facade 53

SPANISH CITY

Location // Whitley Bay

Lighting Designer // Park Electrical



LINCOLN'S INN



Location // London

Lighting Designer // CBG Light Perceptions





Feature Lighting & Landmarks

GLASS CHANDELIER //

While much of our work is about enhancing beautiful spaces and architecture with carefully concealed fittings, our numerous feature lighting projects have let our artistic flair really shine through.

This bespoke glass chandelier for a private residence combines the latest in LED technology with custom-made handblown glass (courtesy of John Moncrieff Ltd), giving a modern and elegant take on the chandelier tradition.

Location // Private Residence
Lighting Designer // Commercial Lighting





NORFOLK HOUSE

Location // Birmingham
Lighting Designer // Commercial Lighting



ADAM AND EVE \\

Location // London
Lighting Designer // Graham Festenstein





WORTH SCHOOL //



Location // West Sussex

Lighting Designer // Chalbrook Services LD

Westworks //



Location // London

Project Partner // Footprint Commercial Interiors





THANKSGIVING BEACON \



A symbol of Thanksgiving for the Peace in Northern Ireland, this stunning 19.5 metres high metal sculpture by artist Andy Scott is the tallest in Northern Ireland. Positioned in a prominent position on the banks of the river Lagan, the beacon has arguably become the symbol of the city.

Commissioned to bring the sculpture to life at night, Sutton Vane Associates worked with Commercial Lighting to create the final lighting solution incorporating an assortment of Meyer floodlights and spotlights.

Location // Belfast

Lighting Designer // Sutton Vane Associates



SAILS OF THE SOUTH \\

The Sails of the South is now one of Portsmouth's most well-known landmarks. It was designed by HGP Architects as part of the Gateway Project, a regeneration scheme by Portsmouth City Council. Our distinctive colored lighting scheme, which was created by HGP Architects, is one of the most distinguishing features of the sculpture. It goes beyond just providing nighttime illumination.

This is a great example of how thoughtful lighting design can become an essential part of the architecture itself.



Location // Portsmouth
Lighting Designer // Speirs Major,
Commercial Lighting, Sutton Vane Associates





POPPIES \\\

Reimagined from the 2018 artwork Poppies: Wave and Weeping Window, this is now a permanent exhibit in Manchester's Imperial War Museum North, illuminated with Meyer Monofloods.



Location // Manchester

Lighting Designer // Andy Grant Lighting Design



AGEAS BOWL PUBLIC ART \\\

We were delighted to be awarded the contract to design a high quality lighting scheme for the impressive Ageas Bowl Public Art sculpture at the Hampshire 'home of cricket'. The sculpture features six life-sized stainless steel figures, and captures the bowling action in slow motion with the release of the ball aimed towards sculptor Richard Farrington's Howzat cricket stumps, another sculpture with lighting designed by Commercial Lighting.

The "Night Bowlers" sculpture was designed by Joanne Calcutt from Eastleigh Borough Council.



Location // Ageas Bowl, Southampton
Lighting Designer // Commercial Lighting





Faith Buildings

CHICHESTER CATHEDRAL

Our most notable involvement at Chichester Cathedral was the sensitive illumination of the Tudor Paintings - a magnificent example of Renaissance art depicting the beginnings of the diocese of Chichester. Coinciding with an important restoration project by Chichester Cathedral Restoration and Development Trust, Commercial Lighting was asked to provide an appropriate lighting scheme for these priceless wooden panels.

Specially designed and produced fittings were buried within the building's floor tiles, sensitively illuminating the artwork whilst having minimal impact on the cathedral's architecture.



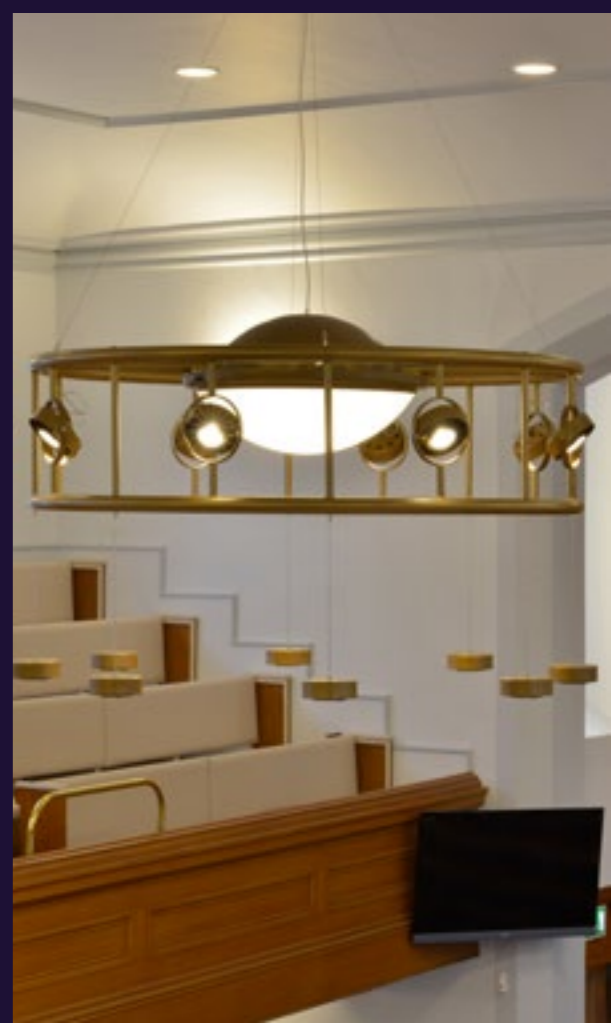
Location // Chichester
Lighting Designer // Commercial Lighting



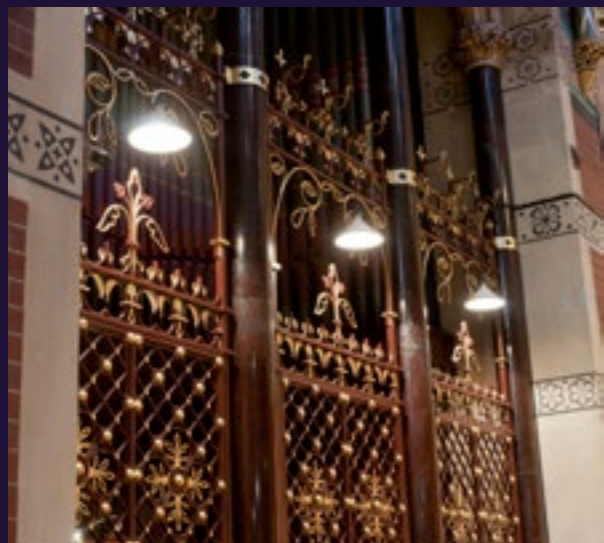
St JOHN'S CHURCH \

With over 20 years experience of providing energy efficient lighting for many places of worship, Commercial Lighting was pleased to have the opportunity to demonstrate their design & manufacturing skills to provide the lighting for both the interior and exterior facade at the prominent St John's Church in Hamilton. Using the very latest LED technology, Commercial Lighting worked closely with the architect to design and produce various standard & bespoke luminaires, which were installed to great effect.

Location // Hamilton, Scotland
Lighting Designer // Commercial Lighting



ALL SAINTS CHURCH \\\



Location // London
Lighting Designer // Graham Festenstein





St JOSEPH'S CHURCH \



Location // Portsmouth
Lighting Designer // Commercial Lighting



SALISBURY CATHEDRAL \\\



Location // Wiltshire

Lighting Designer // Light + Design Associates



LINCOLN CATHEDRAL \

Location // Lincoln

Lighting Designer // CBG Light Perceptions





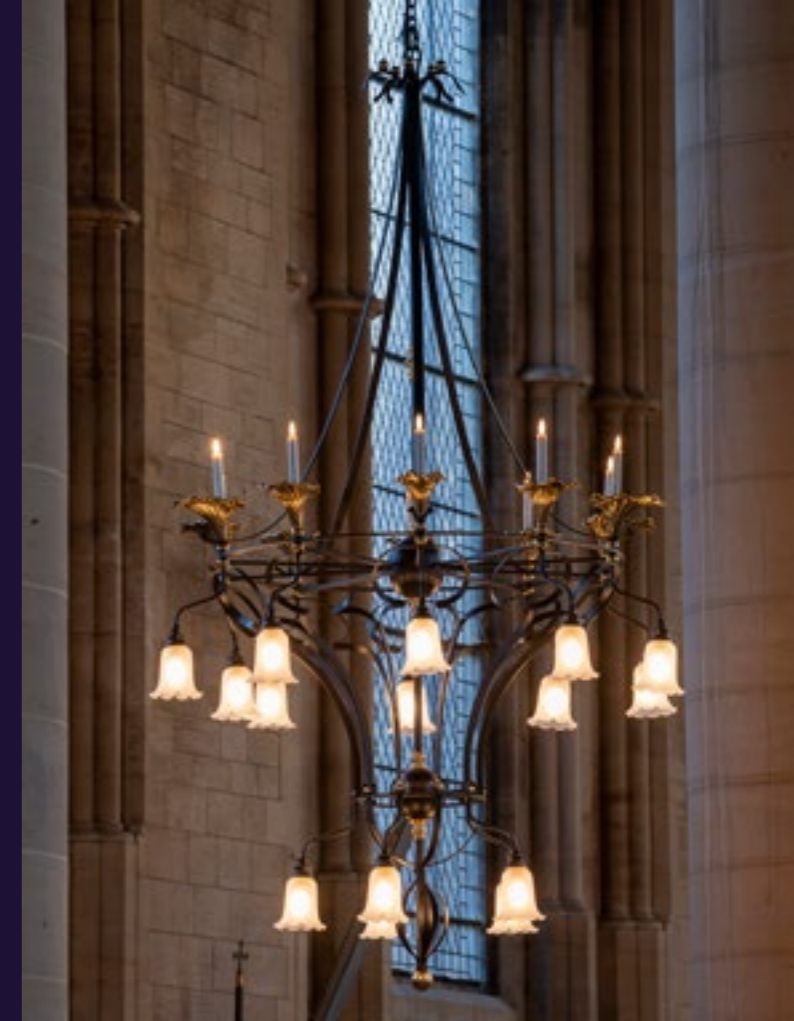
ALL HALLOWS \ \

Commercial Lighting was pleased to collaborate with Light Perceptions on developing a unique solution for the new lighting at All Hallows Church, Gospel Oak.

A compact aluminium pendant was designed to incorporate both Sovereign Zoom Projectors and custom chandeliers. With the Dali Control gear being mounted remotely, weight on the pendant was kept to a minimum.



Location // Gospel Oak
Lighting Designer // CBG Light Perceptions



Photography \\

James Newton - Battersea Powerstation, Lincoln's Inn, All Hallows

PhotoMa - St John's Church, Dollar Academy

Mike Cooper & Sothers - Piece Hall

James French - Leake Street Arches

All other photography by Chris Knox or Commercial Lighting

Website: www.commercial-lighting.co.uk

Email: sales@commercial-lighting.co.uk

\\

Address: 16-17 Chandlers Way, Swanwick, Southampton, SO31 1FQ

Tel: +44(0)1489 581002 // Fax: +44(0)1489 576262



www.commercial-lighting.co.uk