

CASE STUDY

COATES PRIMARY SCHOOL – PE7 2BP



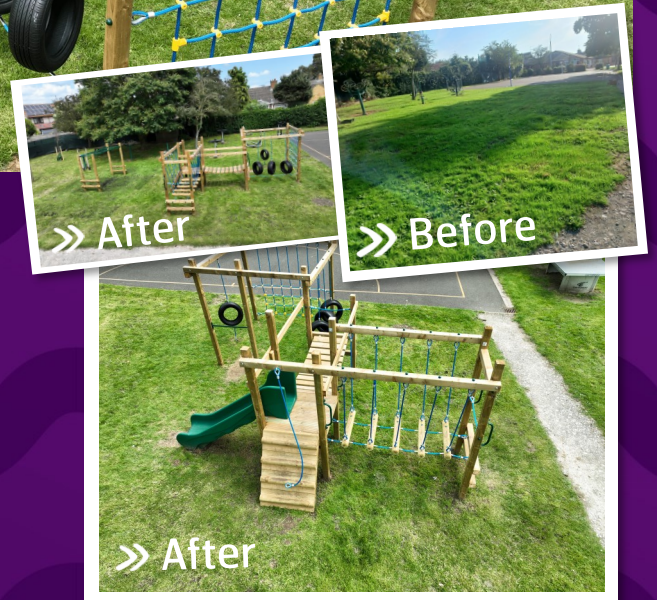
SOVEREIGN
Bringing Imagination into Play



When we visited Coates Primary School the client was interested in having a new trim trail and at first we discussed how this might work in the area if the items were in a U shape or in a zig zag. While the area was of a decent size because it was essentially a square, we suggested that maybe a multi verse frame might be a better option as it is essentially a trim trail all joined up with some low level decks and we'd therefore be able to squeeze more into the area.

They liked this idea therefore we agreed to quote on that and they also wanted a higher level item, which we explained would need to be slightly separate from the lower level equipment and would require some safety surfacing, with grass guard matting being the most cost effective option for their budget.

All has been installed successfully and looks great.



» FEEDBACK

Why did you choose Sovereign for the Project?

"A project that the school's PTA could raise money for to improve and further our outdoor equipment"

What made Sovereign's design better than any others you received?

"I shopped around online and the children at the school chose which structures they preferred by voting in classes"

How did you find the design process?

"Really smooth and easy process"

How did you find the installation process?

"Children have a rota to use it and it has enhanced break and lunch times"

What was your overall experience of having Sovereign fulfil your project?

"Really great"

» "We are really pleased with the play equipment, the children are enjoying using it to enhance their play during break and lunch times."

Stephanie Brown

School Business Manager



Justin Mottaz - 07747 474323
- justin@sovereignplay.com