

# CASE STUDY

## LITTLE DRAGONS DAY NURSERY— RG30 2BA



**SOVEREIGN**  
Bringing Imagination into Play

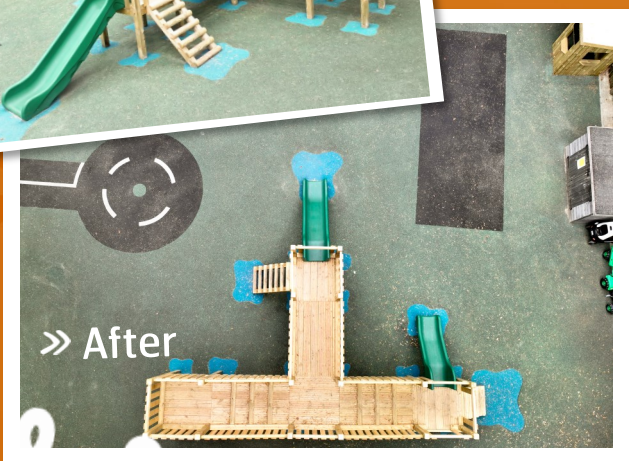


The nursery didn't have any fixed equipment and their non fixed equipment was no longer suitable so the need for a tower for the children to explore, expand their imaginative play and develop their fine and gross motor skills was great. Consulting with the nursery team they wanted to create a tower that had multiple height platforms and the Connect Tower range was a perfect fit.

During the initial meeting the nursery selected elements the best fit for them including steps up and two slides. The end of the tower was designated as a lookout tower where the children could see out over the whole garden.

Considerations that had to be made included the accessibility of the tower. Suitable for children at the nursery ranging from 2 years to 5-year-old their varying abilities at different stages of the development.

The finished Tower looks fantastic in the space and as well as being a vital physical and imaginative play piece it adds a WOW factor to the garden.



»» "From the beginning with the design Chris listened to what we wanted and needed, then helped to design the playground. The delivery was on time and smooth, the man was very helpful, the builders were very quick and really helpful, they went over and a above expectations even help to move some bits around for us. Then afterwards the collection was quick and easy."

Rebecca Croft  
Nursery Manager



Chris Gaskell - 07584 211076 -  
Chris.Gaskell@sovereignplay.com